

**Vickers®**  
**Vane Pumps**

---



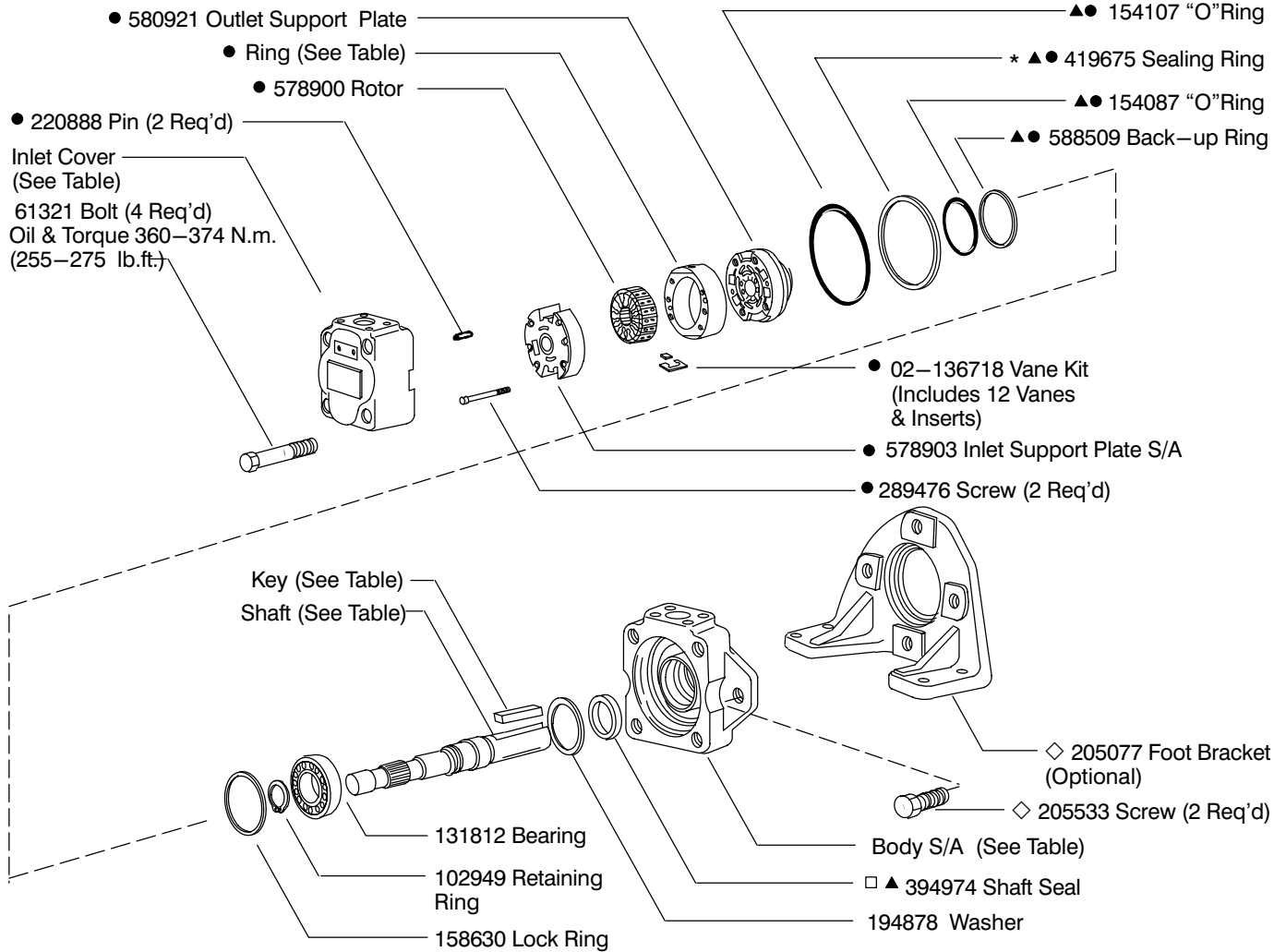
## Vane Type Single Pump

45V(M)-\*\*-A(M)(F)-\*\*-22-\*

**Service Data**

**Vane Type Single Pump**

45V(M)—\*\*A(M)(F)—\*\*—22—\*



□ Assemble seal with spring loaded sealing member towards bearing. Seals to be completely wetted with oil prior to assembly.

SHAFT	TYPE	KEY
233369	(1) keyed	217596
242885	(11) splined	—
361760	(86) keyed	239751
850612	(192N) keyed	472303

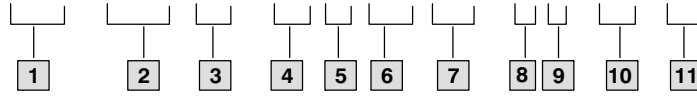
MODEL	INLET COVER	BODY S/A
45V**A	229633	942356
45VM**AM	478504	02-136926
45VM**A	229633	02-136925

MODEL	RING	● CART KIT	F3 CART KIT
45V42	581679	02–102572	02–102576
45V45	582570	02–102573	02–102593
45V50	581680	02–102574	02–102577
45V60	578904	02–102575	02–102578

- Included in cartridge kit
- ▲ Included in seal kit 919850  
F3 equivalent seal kit 919632
- ◇ Included in foot bracket kit FB–C–10
- \* Install 419675 sealing ring into body, then install cartridge kit.

# Model Code

(F3) - 45V (M) - \*\* A (M) (F) - \* \* - 22 - \*



## 1 Special seals

## 2 Series designation

45V – 138 to 193 cm<sup>3</sup>/r  
(8.41 to 11.75 in<sup>3</sup>/r)

## 3 Pilot designation

M – Metric per ISO 3019/2 100A2HW  
Omit – Standard pilot

## 4 Geometric displacement

(Rated capacity (USgpm) at  
1200 rpm, 6.9 bar (100 psi))

Code	cm <sup>3</sup> /r	in <sup>3</sup> /r
42	138	8.41
45	147	9.00
50	162	9.85
60	193	11.75

## 5 Port connections

A – SAE 4 bolt flange

## 6 Port connection modifier

M – Metric port connection  
(4 bolt flange)  
Omit – Inch thread port connection  
(4 bolt flange)

## 7 Mounting

F – Foot mounting  
Omit – Flange mounting

## 8 Shaft

1 – Straight keyed  
11 – Splined  
86 – Heavy duty straight keyed  
192N – Straight keyed (M pilot only)

## 9 Outlet positions

(Viewed from cover end of pump)

A – Opposite inlet port  
B – 90° CCW from inlet  
C – Inline with inlet  
D – 90° CW from inlet

## 10 Design

## 11 Rotation

(Viewed from shaft end of pump)

L – Left hand for counterclockwise  
R – Right hand for clockwise

### NOTE

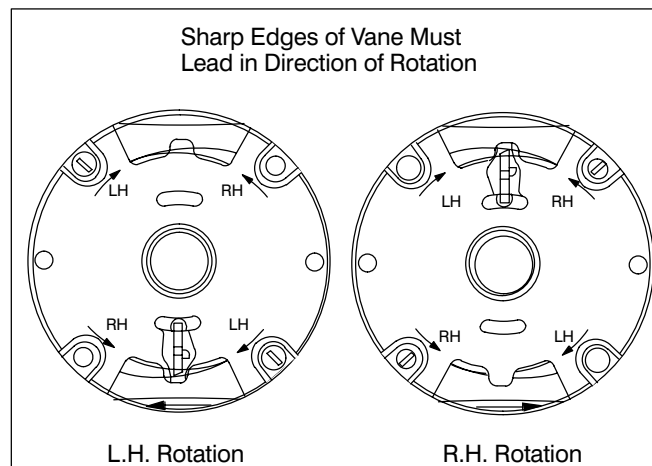
To reverse cartridge kit rotation, remove the two screws and reverse the location of the inlet support plate and outlet support plate. Re-install the two screws hand tight. Use pump cover to align all sections of the cartridge. Carefully remove the cover and tighten the screws.

### NOTE

For satisfactory service life of these components in industrial applications, use full flow filtration to provide fluid which meets ISO cleanliness code 16/13 or cleaner. OFP, OFR, and OFRS series filters are recommended.

### NOTE

When ordering spare cartridge parts, it is recommended they be obtained in cartridge kits. Kits are assembled and tested by Vickers for either right or left hand rotation. If left hand rotation is required, it should be specified on parts order by adding suffix "L" to cartridge kit number.



**Eaton Hydraulics**

15151 Highway 5  
Eden Prairie, MN 55344  
Telephone: 612 937-7254  
Fax: 612 937-7130  
[www.eatonhydraulics.com](http://www.eatonhydraulics.com)

46 New Lane, Havant  
Hampshire PO9 2NB  
England  
Telephone: (44) 170-548-6451  
Fax: (44) 170-548-7110

