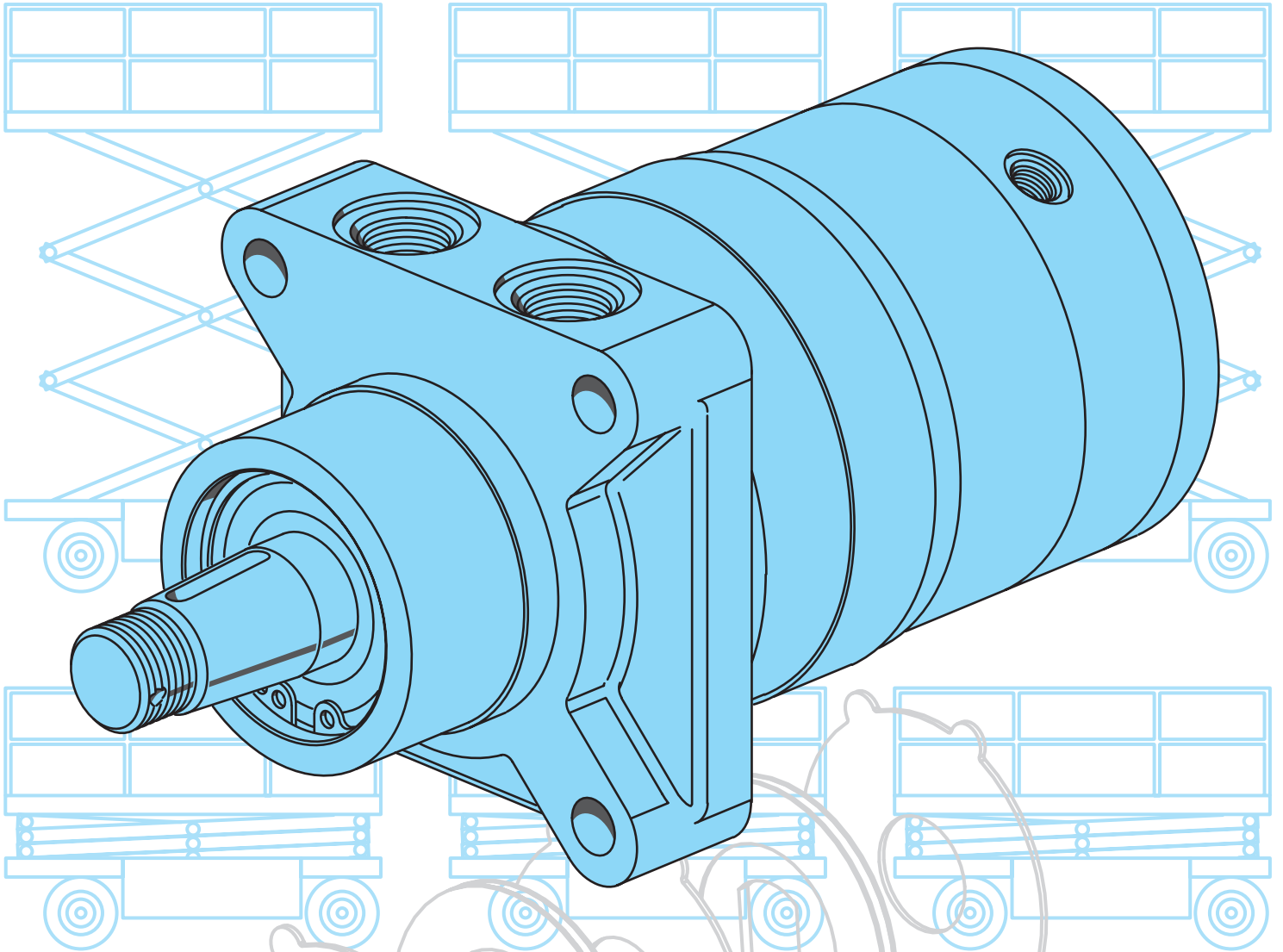


Char-Lynn®

Spool Valve Motors

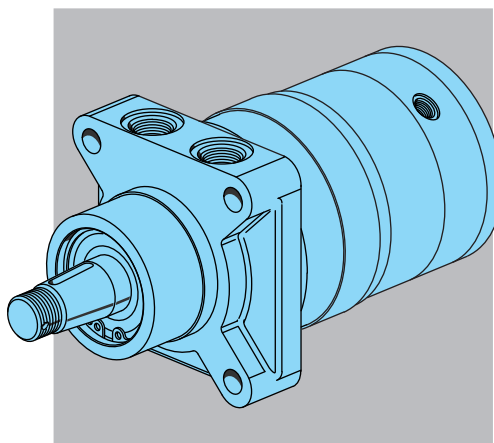
EAT•N



W Series with Parking Brake

Product Information

W Series with Parking Brake



W

W Series Displacement Size = cubic centimeter per shaft revolution (cm³/r)
= cubic inch per shaft revolution ([in³/r])

- 80 [4.9]
- 126 [7.7]
- 154 [9.4]
- 195 [11.9]
- 251 [15.3]
- 303 [18.5]
- 374 [22.8]

Mounting Flange

- 4 Bolt (Wheel) 82.6 [3.25] Pilot Dia. and 13.59 [.535] Dia. Mounting Holes 147.6 [5.81] Dia. B.C., 127.0 [5.00] Dia. Rear Mount Pilot

Output Shaft

- 1-1/4 inch Dia. 14 Tooth Involute Spline 3/8-16 Threaded End
- 1-1/4 inch Dia. Tapered with Woodruff Key and Nut
- 32mm Dia. Straight with Key
- 1-1/4 inch Dia. Straight with Key

Port Type

- 7/8-14 O-ring
- G1/2 (BSP)
- Manifold Mount

Case Flow Options

- Internal Check Valves
- 7/16-20 O-ring Case Drain Port
- 7/16-20 O-ring Case Drain Port with Hot Oil Shuttle
- G1/4 (BSP) Case Drain Port
- G1/4 (BSP) Case Drain Port with Hot Oil Shuttle

Special Features Available

- Viton Seals
- Reverse Rotation

Paint

- No Paint (Standard)
- Painted Low Gloss Black

W Series

Geroler Element	7 Displacements
Flow l/min [GPM]	68 [18] Continuous**
		76 [20] Intermittent*
Speed	200 RPM
Pressure bar [PSI]	165 [2400] Cont.
		179 [2600] Inter.
Torque Nm [lb-in]	410 [3624] Cont.
		562 [4970] Inter.

** Continuous— (Cont.) Continuous rating, motor may be run continuously at these ratings.

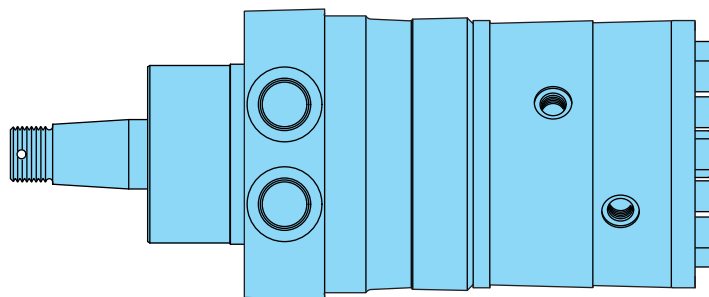
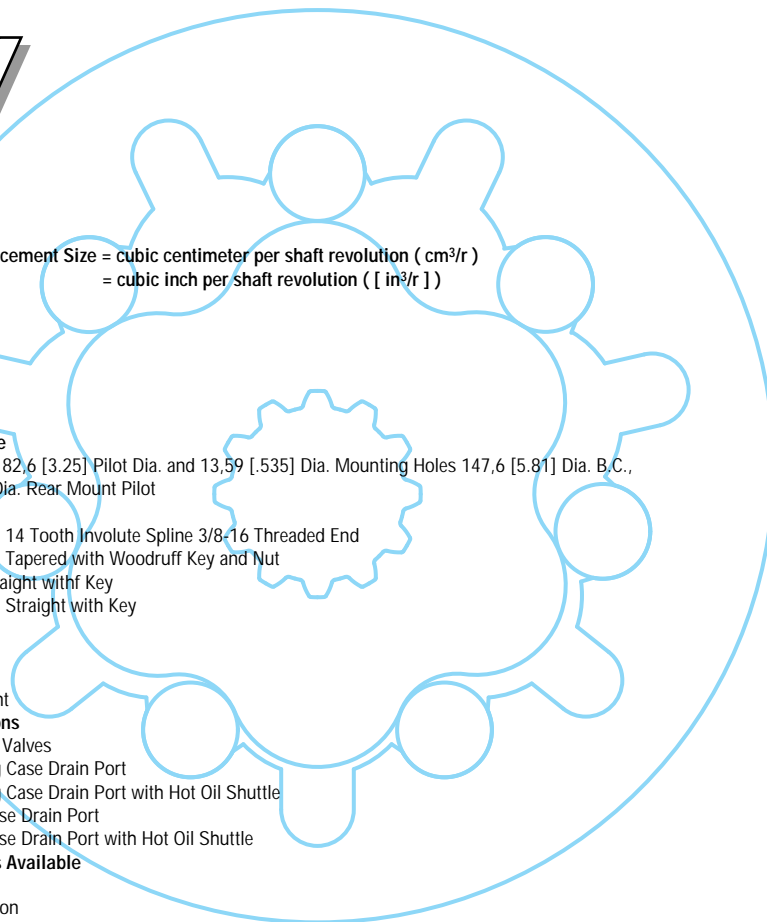
* Intermittent— (Inter.) Intermittent operation, 10% of every minute.

Spring-applied Hydraulic-release Integral Parking Brake

Features:

- Fully integrated friction disk brake
- Very compact
- Brake torque is transferred through the orbit motion inherent in the motor for a 6:1 brake torque magnification.
- Motor envelope OD unchanged – (83 mm [3-1/4 inch] front pilot and 127 mm [5 inch] rear pilot unaffected by addition of brake).
- Independent (hydraulic) brake release port — 15 bar [250 psi] minimum to release brake — capable to full system pressure.
- Isolated brake release cavity for positive actuation control.
- Short brake actuation stroke, requires very little actuation flow
- No measurable brake drag
- Brake holding torque — 791 Nm [7000 in-lb]
- ANSI/SIA A92.6-1990 standard compatible for scissors lift applications

Brake Applications: This brake is to be used only as a passive parking brake. It is not to be used for dynamic braking.



Specifications — Brake Release Pressure

- 205 bar [3000 PSI] Max.
- 15 bar [250 PSI] Min.

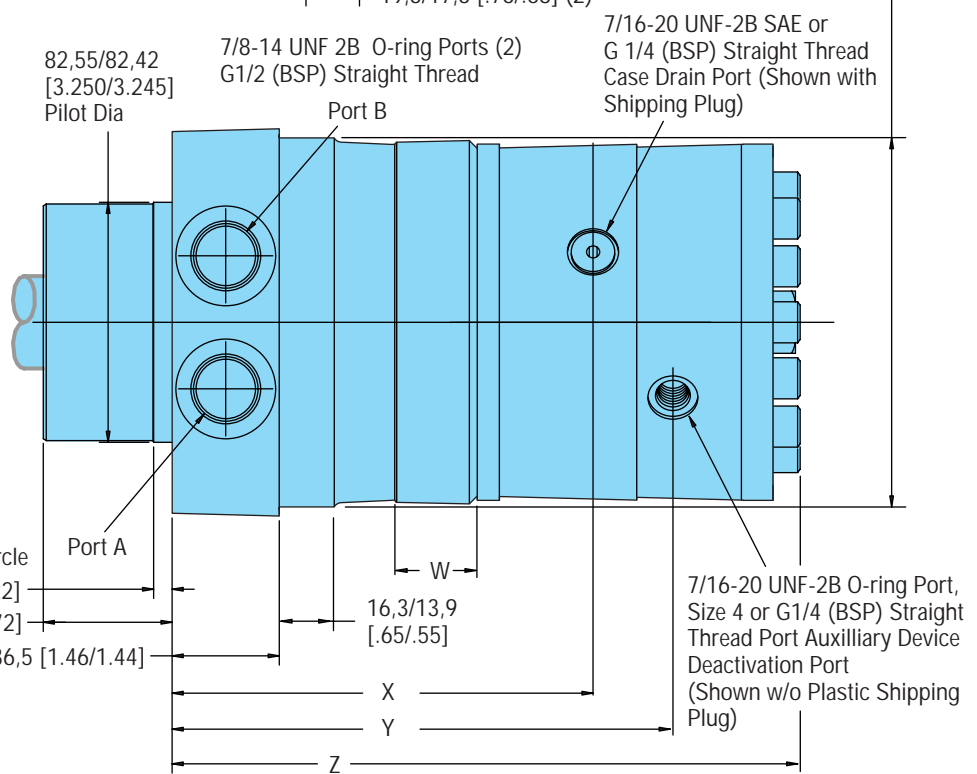
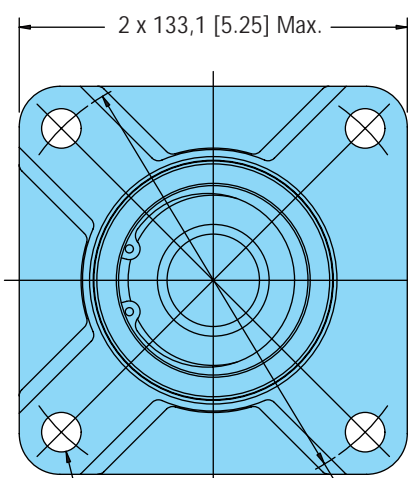
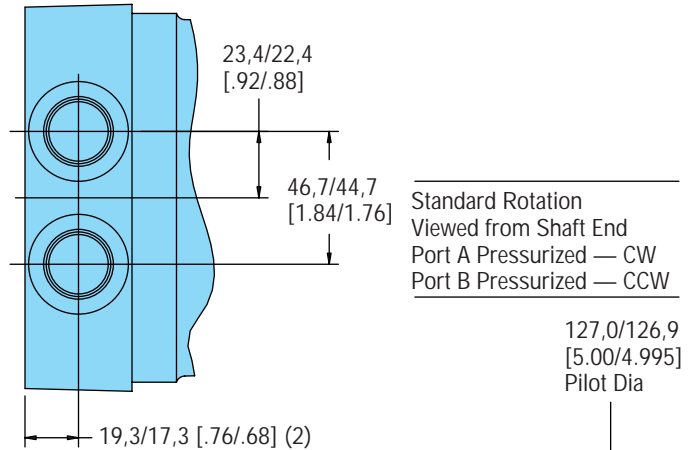
Comprehensive W Series Motor Description

(see Char-Lynn® W Series Motor Catalog 11-111)

Product Information

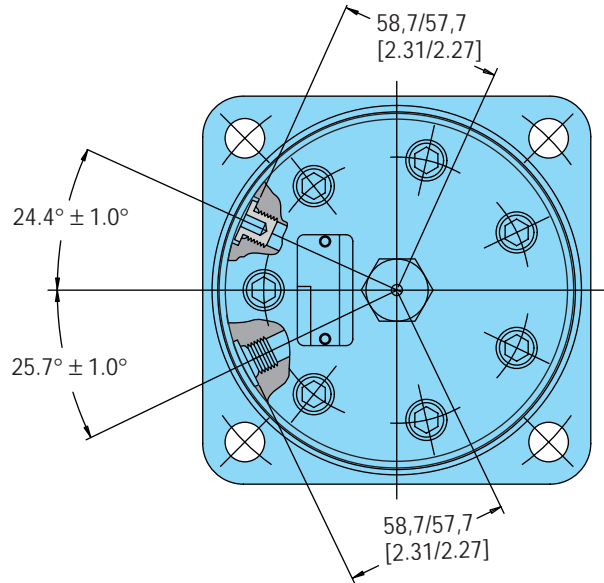
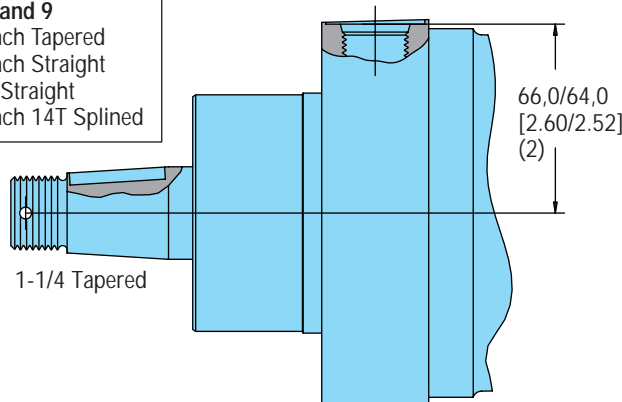
W Series with Parking Brake

Displ. cm ³ /r [in ³ /r]	W Dim. Max.	X Dim. ±1,0 [.04]	Y Dim. ±0,8 [.03]	Z Dim. Max.
80 [4.9]	9,1 [.36]	123,7 [4.87]	153,2 [6.03]	198,4 [7.81]
126 [7.7]	11,9 [.47]	126,7 [4.99]	156,0 [6.14]	201,2 [7.92]
154 [9.4]	14,7 [.58]	129,3 [5.09]	158,8 [6.25]	204,0 [8.03]
195 [11.9]	18,5 [.73]	133,4 [5.25]	162,6 [6.40]	207,8 [8.18]
251 [15.3]	23,9 [.94]	138,7 [5.46]	168,1 [6.62]	213,4 [8.40]
303 [18.5]	29,0 [1.14]	143,5 [5.65]	173,0 [6.81]	218,2 [8.59]
374 [22.8]	35,6 [1.40]	150,4 [5.92]	179,6 [7.07]	224,8 [8.85]



147,62 [5.812] Bolt Circle
7,2/5,6 [.28/.22]
44,7/43,7 [1.76/1.72]
13,59 [.535] Dia.I Thru (4)
37,1/36,5 [1.46/1.44]

Shaft Dimensions —
see W Series
Catalog 11-111
page 8 and 9
1-1/4 Inch Tapered
1-1/4 Inch Straight
32 mm Straight
1-1/4 Inch 14T Splined



Spool Valve Motors

Product Information

W Series with Parking Brake

Product Numbers—W Series with Parking Brake

Add three digit prefix —**162**—to four digit number from chart for complete product number — Example 162-1155.
Orders will not be accepted without three digit prefix.

Displ. cm ³ /r [in ³ /r]	80 [4.9]	126 [7.7]	154 [9.4]	195 [11.9]	251 [15.3]	303 [18.5]	374 [22.8]
(with internal check valves)	162-1143	-1144	-1145	-1146	-1183	-1148	-1149
(with 9/16-18 case drain)	162-1150	-1151	-1152	-1153	-1155	-1156	-1157

Note: All above motors have 1-1/4 inch tapered output shaft, 7/8 -14 o-ring ports, and black paint

162-1155

For W Series motors with a configuration not shown in the charts above: Use the model code number system to specify the product in detail (see page 15, Catalog 11-111 and use the model code supplement shown below for spring-applied hydraulic-release parking brake).

Model Code — W Series Spool Valve Motors

1	2	3	4	5	6	7	8	9	10	11	12	13	14	15	16
M	0	W								0	6			0	C

Position 11, 12 **Special Features (Hardware)**
06 Spring-applied hydraulic-release brake

This catalog information was current at date of printing, but may be subject to change.

Eaton
Fluid Power Group
Hydraulics Business USA
14615 Lone Oak Road
Eden Prairie, MN 55344
USA
Tel: 952-937-9800
Fax: 952-294-7722
www.eaton.com/hydraulics

Eaton
Fluid Power Group
Hydraulics Business Europe
Route de la Longeraie 7
1110 Morges
Switzerland
Tel: +41 (0) 21 811 4600
Fax: +41 (0) 21 811 4601

Eaton
Fluid Power Group
Hydraulics Business Asia Pacific
11th Floor Hong Kong New World Tower
300 Huaihai Zhong Road
Shanghai 200021
China
Tel: 86-21-6387-9988
Fax: 86-21-6335-3912