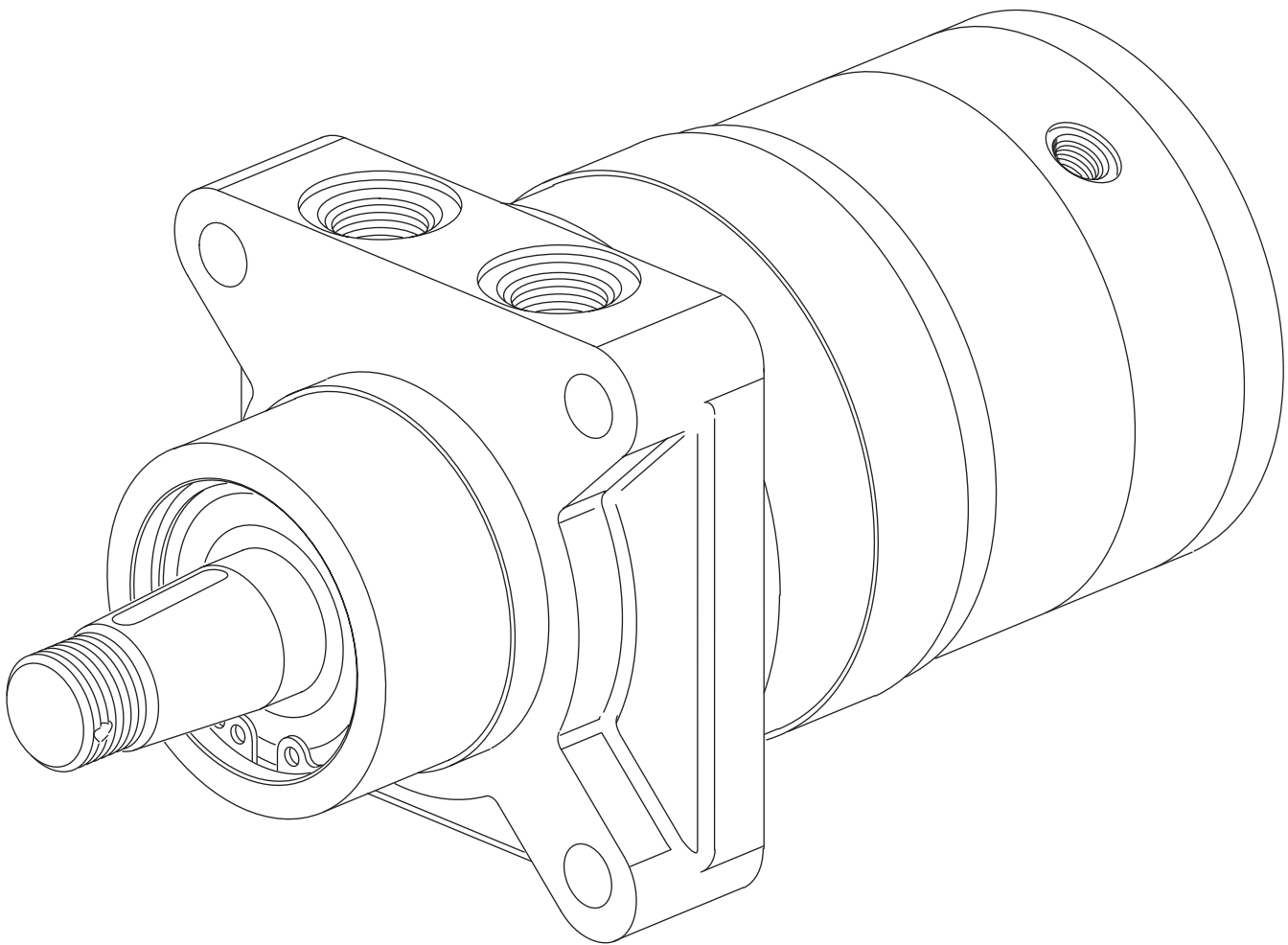


# Char-Lynn®

Spool Valve Hydraulic Motors



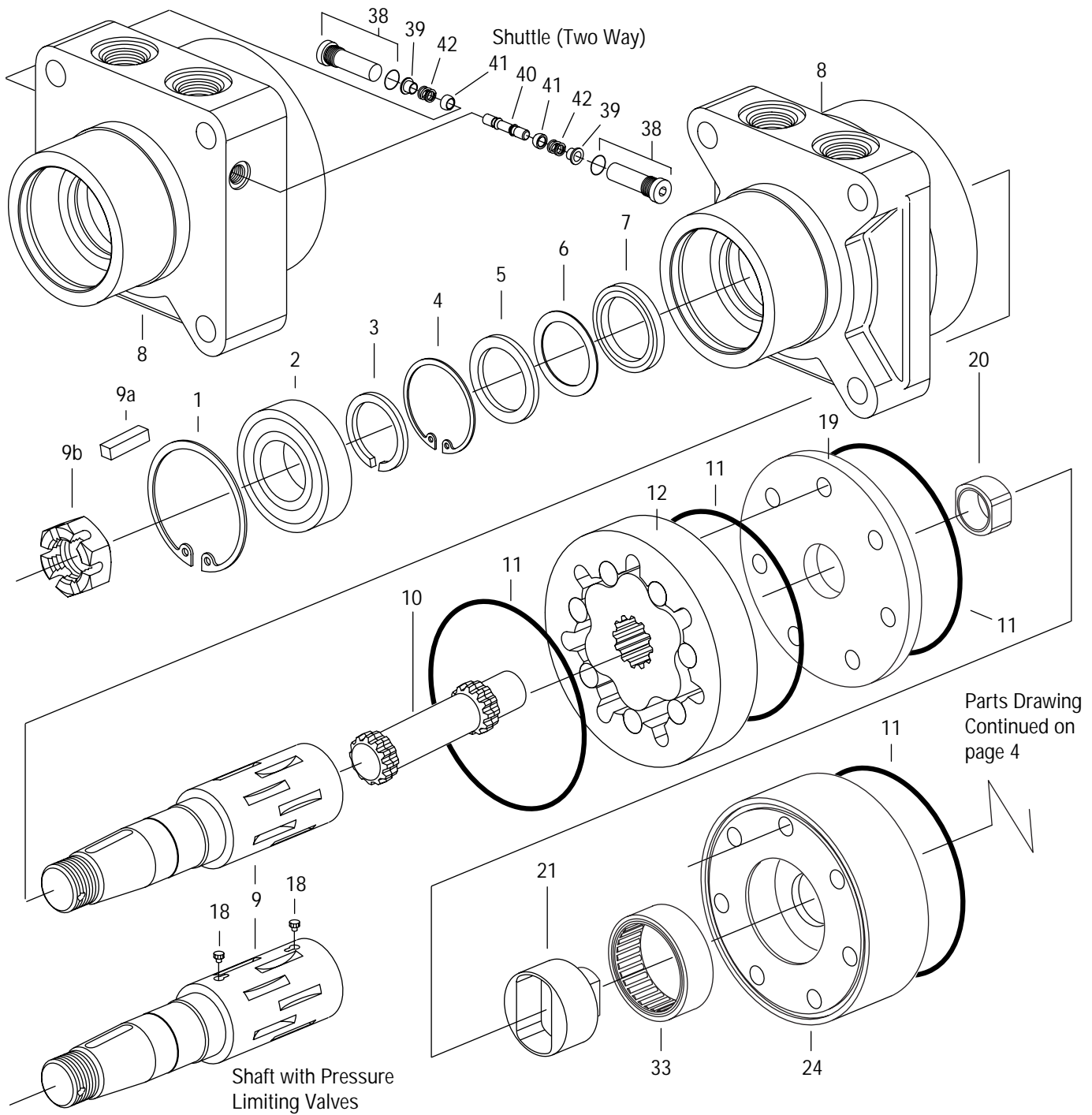
## Parts Information



**W Series Geroler® Motors  
with Parking Brake**

**004**

# W Series with Parking Brake



Output Shaft (Code No.)	Ref. No. 9 Shaft	No Check Valves (Low Speed Shaft)	Internal Check Valves (Low Speed Shaft)	No Check Valves (High Speed Shaft)	Internal Check Valves (High Speed Shaft)
(02)	1-1/4 inch Dia 14 Tooth Splined	203514-002	202525-002	202615-002	202584-002
(03)	1-1/4 inch Dia Tapered Hex Nut — 14163-000 Key — 14392-005	203514-053	202525-053	202615-053	202584-053
(04)	32mm Dia. Straight Key — 14460-005	203514-004	202525-004	202615-004	202584-004
(06)	1-1/4 inch Dia Straight Key — 14393-009	203514-006	202525-006	202615-006	202584-006

## W Series with Parking Brake

Ref. No.	Part Number	Part Number	Description	Quantity
	<b>without Shuttle Valve</b>	<b>With Shuttle Valve</b>		
1	14731-001	14731-001	Ring, Retaining	1
2	14730-001	14730-001	Bearing, Ball	1
3	14734-001	14734-001	Ring, Retaining	1
4	14733-001	14733-001	Ring, Retaining	1
5	202409-001	202409-001	Washer	1
X 6	7382-000	7382-000	Washer, Backup	1
X 7	9057-009	9057-009	Seal, Pressure	1
8	203390-001	113032-001	Housing with <b>7/8-14 UNF O-ring Ports</b>	1
	203390-002	113032-002	Housing with <b>G1/2 (BSP) Straight Thread Ports</b>	1
9	**	**	Shaft, Output	1
10	*	*	Drive	1
X 11	250002-046	250002-046	Seal	5
12	*	*	Geroler®	1
13	203092-001	203092-001	End Cap	1
14	*	*	Cap Screw, Internal Hex Head	7
18	201971-001	201971-001	Poppet (for Shaft, Output — with Internal Check Valve seats)	2
19	203089-001	203089-001	Spacer Plate	1
20	114882-001	114882-001	Drive Collar S/A	1
21	203002-001	203002-001	Shaft, Brake	1
22	203087-001	203087-001	Stationary Plate	4
23	203012-001	203012-001	Friction Pad Assembly	3
24	114979-005	114979-005	Brake Shaft Housing	1
25	203091-001	203091-001	Push Plate	1
26	203097-001	203097-001	Piston Housing <b>without</b> Case Drain	1
	203097-XXX	203097-XXX	Piston Housing with <b>7/16-20 UNF-2B O-ring Case Drain Port</b>	1
	203097-XXX	203097-XXX	Piston Housing with <b>G1/4 (BSP) Case Drain Port</b>	1
27	114980-XXX	114980-XXX	Piston	1
28	14841-001	14841-001	Spring, Belleville	1
29	14842-001	14842-001	Washer	1
X 30	14853-001	14853-001	Piston Seal	1
X 31	14502-109	14502-109	O-ring	1
X 32	250001-040	250001-040	O-ring	1
33	16341-001	16341-001	Bearing	1
36	250001-111	250001-111	O-ring	1
37	204014-001	204014-001	Bolt	1

Parts List Continued on Page 6

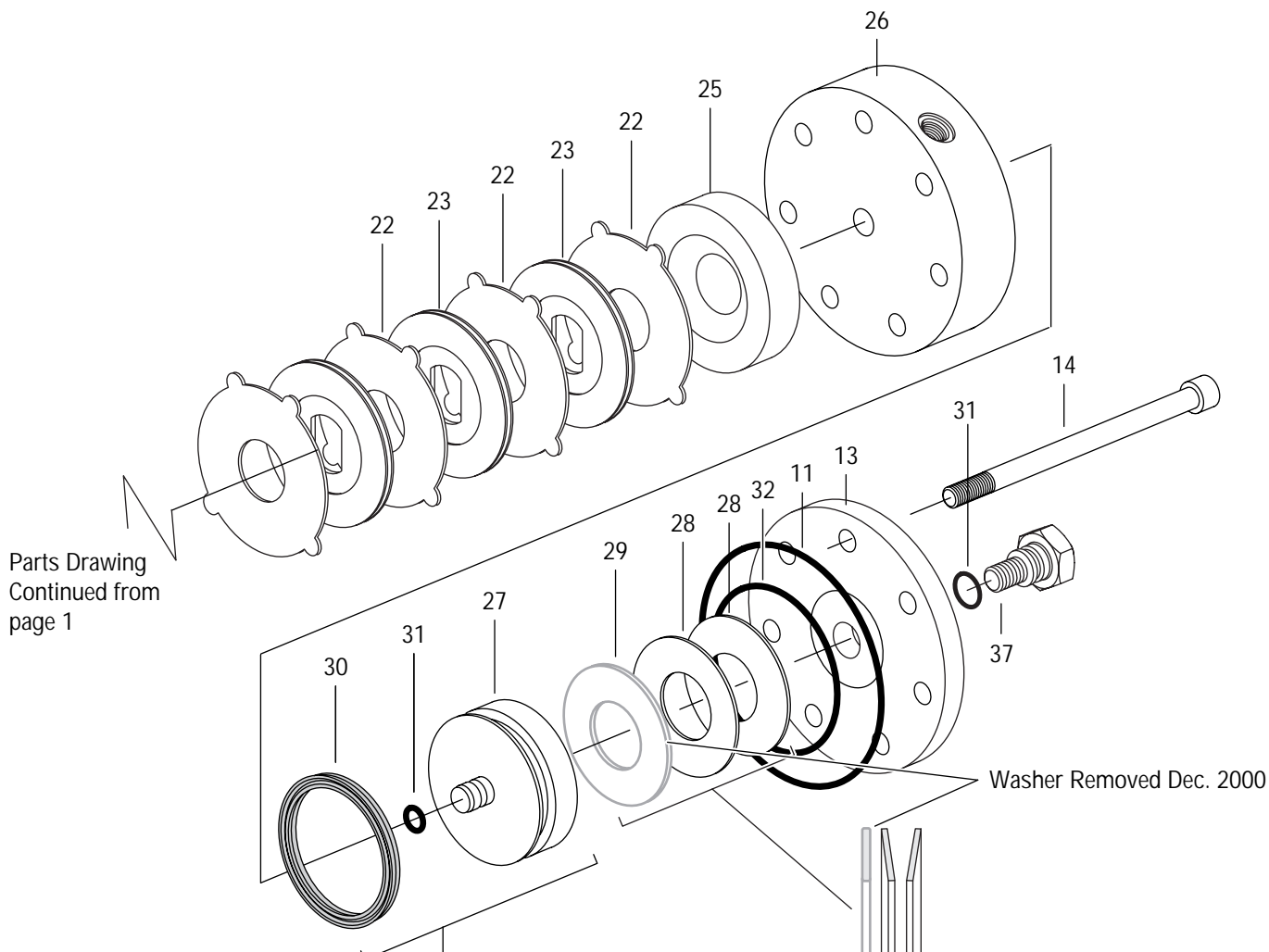
\*See Chart Ref. 14, 12, 10 Below

\*\*See Chart Ref. 9 Page 2

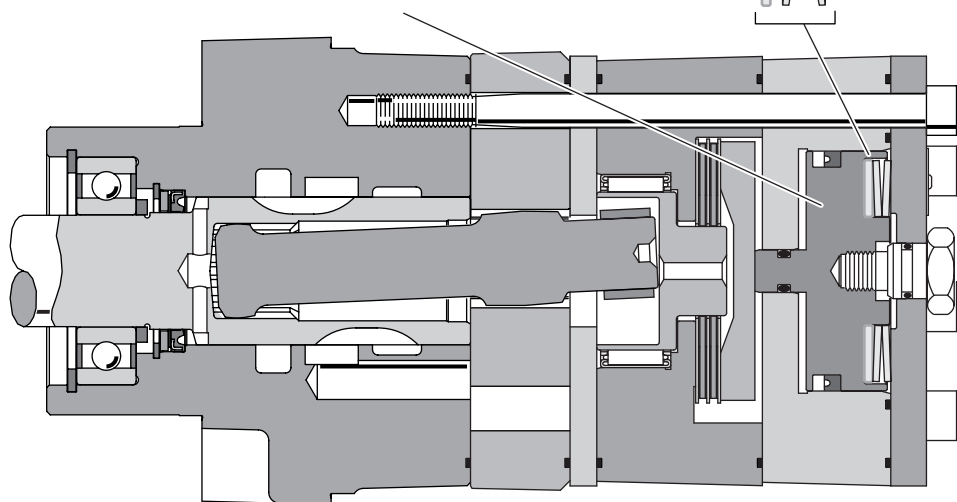
NSS Not Sold Separately

Displacement cm <sup>3</sup> /r [in <sup>3</sup> /r]	Ref. No. 14 Screw, Cap (Internal Hex)	Length mm [inch]	Ref. No. 12 Geroler®	Width mm [inch]	Ref. No. 10 Drive	Length mm [inch]
80 [ 4.9]	16319-654	139,7 [5.50]	201974-001	9,1 [ .36]	203099-002	106,2 [4.18]
126 [ 7.7]	16319-654	139,7 [5.50]	201974-002	11,9 [ .47]	203099-003	109,0 [4.29]
154 [ 9.4]	16319-656	146,0 [5.75]	201974-003	14,7 [ .58]	203099-004	111,7 [4.40]
195 [11.9]	16319-656	146,0 [5.75]	201974-004	18,5 [ .73]	203099-005	115,2 [4.54]
251 [15.3]	16319-660	152,4 [6.00]	201974-005	23,9 [ .94]	203099-001	121,0 [4.76]
303 [18.5]	16319-660	152,4 [6.00]	201974-006	29,0 [1.14]	203099-007	126,0 [4.96]
374 [22.8]	16319-664	165,1 [6.50]	201974-007	35,6 [1.40]	203099-008	132,2 [5.20]

# W Series with Parking Brake



**Note:** Special Tool is required for Piston/Housing Installation — Tool. No. 600705)



# W Series with Parking Brake

Duplicate part list — same as page 3

Ref. No.	Part Number	Part Number	Description	Quantity
	<b>without Shuttle Valve</b>	<b>With Shuttle Valve</b>		
1	14731-001	14731-001	Ring, Retaining	1
2	14730-001	14730-001	Bearing, Ball	1
3	14734-001	14734-001	Ring, Retaining	1
4	14733-001	14733-001	Ring, Retaining	1
5	202409-001	202409-001	Washer	1
X 6	7382-000	7382-000	Washer, Backup	1
X 7	9057-009	9057-009	Seal, Pressure	1
8	203390-001	113032-001	Housing with <b>7/8-14 UNF O-ring Ports</b>	1
	203390-002	113032-002	Housing with <b>G1/2 (BSP) Straight Thread Ports</b>	1
9	**	**	Shaft, Output	1
10	*	*	Drive	1
X 11	250002-046	250002-046	Seal	5
12	*	*	Geroler®	1
13	203092-001	203092-001	End Cap	1
14	*	*	Cap Screw, Internal Hex Head	7
18	201971-001	201971-001	Poppet (for Shaft, Output — with Internal Check Valve seats)	2
19	203089-001	203089-001	Spacer Plate	1
20	114882-001	114882-001	Drive Collar S/A	1
21	203002-001	203002-001	Shaft, Brake	1
22	203087-001	203087-001	Stationary Plate	4
23	203012-001	203012-001	Friction Pad Assembly	3
24	114979-005	114979-005	Brake Shaft Housing	1
25	203091-001	203091-001	Push Plate	1
26	203097-001	203097-001	Piston Housing <b>without</b> Case Drain	1
	203097-XXX	203097-XXX	Piston Housing with <b>7/16-20 UNF-2B O-ring Case Drain Port</b>	1
	203097-XXX	203097-XXX	Piston Housing with <b>G1/4 (BSP) Case Drain Port</b>	1
27	114980-XXX	114980-XXX	Piston	1
28	14841-001	14841-001	Spring, Belleville	1
29	14842-001	14842-001	Washer	1
X 30	14853-001	14853-001	Piston Seal	1
X 31	14502-109	14502-109	O-ring	1
X 32	250001-040	250001-040	O-ring	1
33	16341-001	16341-001	Bearing	1
36	250001-111	250001-111	O-ring	1
37	204014-001	204014-001	Bolt	1

Parts List Continued on Page 6

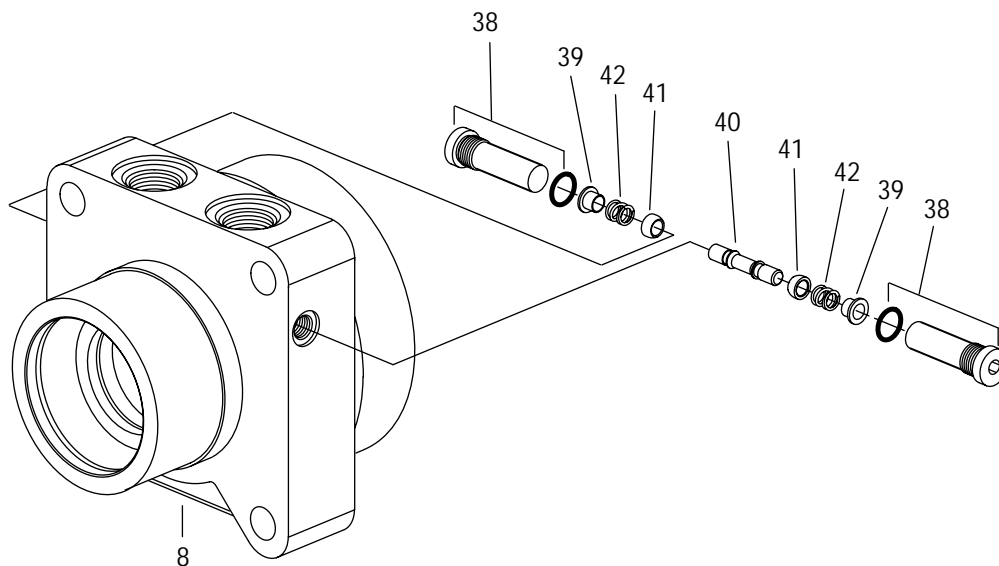
\*See Chart Ref. 14, 12, 10 Below

\*\*See Chart Ref. 9 Page 2

NSS Not Sold Separately

Displacement cm <sup>3</sup> /r [in <sup>3</sup> /r]	Ref. No. 14 Screw, Cap (Internal Hex)	Length mm [inch]	Ref. No. 12 Geroler®	Width mm [inch]	Ref. No. 10 Drive	Length mm [inch]
80 [ 4.9]	16319-654	139,7 [5.50]	201974-001	9,1 [ .36]	203099-002	106,2 [4.18]
126 [ 7.7]	16319-654	139,7 [5.50]	201974-002	11,9 [ .47]	203099-003	109,0 [4.29]
154 [ 9.4]	16319-656	146,0 [5.75]	201974-003	14,7 [ .58]	203099-004	111,7 [4.40]
195 [11.9]	16319-656	146,0 [5.75]	201974-004	18,5 [ .73]	203099-005	115,2 [4.54]
251 [15.3]	16319-660	152,4 [6.00]	201974-005	23,9 [ .94]	203099-001	121,0 [4.76]
303 [18.5]	16319-660	152,4 [6.00]	201974-006	29,0 [1.14]	203099-007	126,0 [4.96]
374 [22.8]	16319-664	165,1 [6.50]	201974-007	35,6 [1.40]	203099-008	132,2 [5.20]

# W Series with Parking Brake



Ref. No.	Part Number	Part Number	Description	Quantity
	<b>without Shuttle Valve</b>	<b>With Shuttle Valve</b>		
38	—	9293-001	Plug/O-ring S/A	2
		250003-906	O-ring	2
39	—	8755-000	Sleeve, Dash Pot	2
40	—	8566-000	Piston Shuttle	1
41	—	8567-000	Poppet	2
42	—	230079-000	Spring	2
	60577-000	Seal Kit — Contains Parts Indicated by X		



## Spool Valve Hydraulic Motors

# W Series with Parking Brake

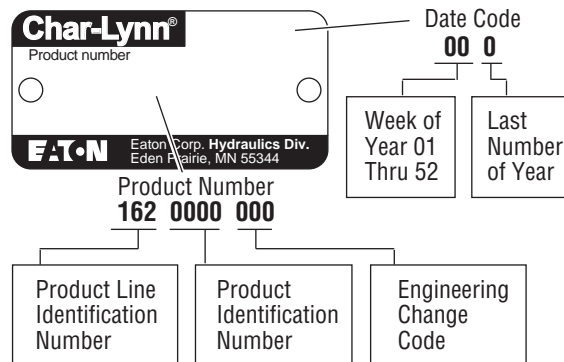
### How to Order Replacement Parts

#### Each Order Must Include the Following:

1. Product Number
2. Date Code
3. Part Name
4. Part Number
5. Quantity of Parts

For More Detailed Information Contact Eaton Hydraulics  
14615 Lone Oak Road Eden Prairie, MN 55344.

- Specifications and performance data, Catalog 10-01-109
- When servicing W Series with parking brake refer to Repair Information 07-01-158. This repair manual lists tools required, and step by step disassembly and reassembly procedures.





**Eaton**  
Fluid Power Group  
Hydraulics Business USA  
14615 Lone Oak Road  
Eden Prairie, MN 55344  
USA  
Tel: 952-937-9800  
Fax: 952-294-7722  
[www.eaton.com/hydraulics](http://www.eaton.com/hydraulics)

**Eaton**  
Fluid Power Group  
Hydraulics Business Europe  
Route de la Longeraie 7  
1110 Morges  
Switzerland  
Tel: +41 (0) 21 811 4600  
Fax: +41 (0) 21 811 4601

**Eaton**  
Fluid Power Group  
Hydraulics Business Asia Pacific  
11th Floor Hong Kong New World Tower  
300 Huaihai Zhong Road  
Shanghai 200021  
China  
Tel: 86-21-6387-9988  
Fax: 86-21-6335-3912