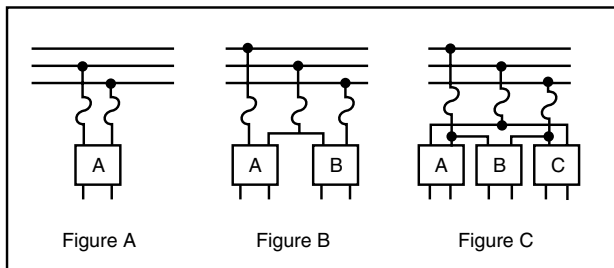
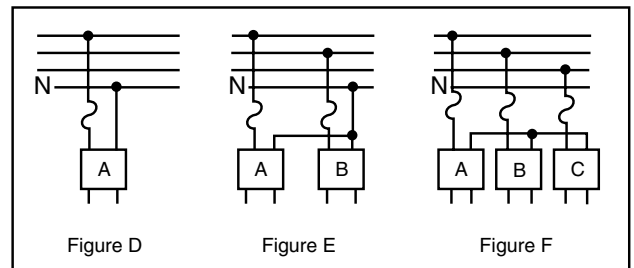


# Recommended types X and KS link primary fusing for distribution transformers

Delta-connected primary



Wye-connected primary



Transformer size (kVA)	2400 Δ				2400/4160Y		4800 Δ		4800/8320Y			
	Figures A and B		Figure C		Figures D, E and F		Figures A and B		Figure C		Figures D, E and F	
	Rated amps	Link rating	Rated amps	Link rating	Rated amps	Link rating	Rated amps	Link rating	Rated amps	Link rating	Rated amps	Link rating
5	2.08	2.75	3.61	4	2.08	2.75	1.04	1.5	1.8	2.5	1.04	1.5
10	4.17	5.5	7.22	10	4.17	5.5	2.08	2.75	3.61	4	2.08	2.75
15	6.25	10	10.80	15	6.25	10	3.12	4	5.42	7	3.12	4
25	10.42	15	18.05	25	10.42	15	5.21	7	9.01	15	5.21	7
37.5	15.63	25	27.05	40	15.63	25	7.81	10	13.5	20	7.81	10
50	20.80	30	36.10	50	20.80	30	10.42	15	18.05	25	10.42	15
75	31.25	50	54.20	80	31.25	50	15.63	25	27.05	40	15.63	25
100	41.67	65	72.20	100	41.67	65	20.82	30	36.08	50	20.82	30
167	69.58	100	120.30	150	69.58	100	31.23	50	60.14	80	31.23	50
250	104.16	150	180.42	200	104.16	150	41.64	80	90.21	125	41.64	80
333	138.75	200	240.60	—	138.75	200	69.39	100	120.28	150	69.39	100
500	208.33	200	360.80	—	208.33	200	104.09	150	180.42	200	104.09	150

Transformer size (kVA)	7200 Δ				7200/12470Y		7620/13200Y		12000 Δ			
	Figures A and B		Figure C		Figures D, E and F		Figures D, E and F		Figures A and B		Figure C	
	Rated amps	Link rating	Rated amps	Link rating	Rated amps	Link rating	Rated amps	Link rating	Rated amps	Link rating	Rated amps	Link rating
5	0.69	1	1.20	1.5	0.69	1	0.66	1	0.42	0.5	0.72	1
10	1.39	2	2.40	3.5	1.39	2	1.31	2	0.83	1	1.44	2
15	2.08	2.75	3.61	4	2.08	2.75	1.97	2.75	1.25	1.5	2.16	2.75
25	2.47	4	5.94	7	2.47	4	3.28	4	2.08	2.5	3.61	4
37.5	5.21	7	9.01	15	5.21	7	4.92	7	3.12	3.5	5.42	7
50	6.94	10	12.01	15	6.94	10	6.56	10	4.17	5.5	7.22	10
75	10.42	15	18.05	25	10.42	15	9.84	15	6.25	7	10.80	15
100	13.89	20	24.04	30	13.89	20	13.12	20	8.33	10	14.44	20
167	23.19	30	40.10	65	23.19	30	21.87	30	13.92	20	24.06	30
250	34.72	50	60.09	80	34.72	50	32.81	50	20.83	25	36.09	50
333	46.25	65	80.05	125	46.25	65	43.74	65	27.75	40	47.50	65
500	69.44	100	120.19	150	69.44	100	65.61	100	41.66	50	72.20	100

**Note:** Table shows recommended fuse ratings based on the use of Eaton Cooper Power series time current characteristics defined for Type X Link in K-41000AB, February, 1981, and Type KS Link in K-21000AB, February, 1981.

Recommendations provide overload protection (fusing ratio) between 200% and 300% rated load.

$$\text{Fusing Ratio} = \frac{\text{Fuse Min. Melt Current @ 300 sec}}{\text{Transformer Full Load Current}} \times 100$$

\* Since this is the smallest link available and does not protect for 300% load, secondary protection is desirable.

Transformer size (kVA)	13200 Δ				14400 Δ				14400/24940Y		19920/34500Y	
	Figures A and B		Figure C		Figures A and B		Figure C		Figures D, E and F		Figures D, E and F	
	Rated amps	Link rating	Rated amps	Link rating	Rated amps	Link rating	Rated amps	Link rating	Rated amps	Link rating	Rated amps	Link rating
5	0.38	0.5	0.66	1	0.35	0.5	0.59	1	0.35	0.5	0.25	0.33
10	0.76	1	1.31	2	0.69	1	1.20	2	0.69	1	0.50	0.75
15	1.14	1.5	1.97	2.75	1.04	1.5	1.80	3	1.04	1.5	0.75	1
25	1.89	2.5	3.28	4	1.74	2.5	3.01	4	1.74	2.5	1.26	1.5
37.5	2.84	3.5	4.92	7	2.61	3.5	4.52	6	2.61	3.5	1.89	2.5
50	3.79	5.5	6.56	10	3.47	4	5.94	7	3.47	4	2.52	3.5
75	5.68	7	9.84	15	5.21	7	9.01	15	5.21	7	3.78	4
100	7.57	10	13.12	20	6.94	10	12.01	15	6.94	10	5.04	7
167	12.62	20	21.87	30	11.60	15	20.10	30	11.60	15	8.39	10
250	18.94	25	32.81	50	17.36	25	30.08	40	17.36	25	12.59	15
333	25.23	40	43.74	65	23.12	30	40.10	65	23.12	30	16.65	20
500	37.88	50	65.61	100	34.72	50	60.10	80	34.72	50	25.00	30

**Note:** Table shows recommended fuse ratings based on the use of Eaton Cooper Power series time current characteristics defined for Type X Link in K-41000AB, February, 1981, and Type KS Link in K-21000AB, February, 1981.

Recommendations provide overload protection (fusing ratio) between 200% and 300% rated load.

$$\text{Fusing Ratio} = \frac{\text{Fuse Min. Melt Current @ 300 sec}}{\text{Transformer Full Load Current}} \times 100$$

\* Since this is the smallest link available and does not protect for 300% load, secondary protection is desirable.

Amp rating	X-Link 23" lead	KS-Link 23" lead	Amp rating	X-Link 23" lead	KS-Link 23" lead
0.33	41033	–	10	41010	21010
0.5	41050	–	15	41015	21015
0.75	41075	–	20	–	21020
1	41100	–	25	–	21025
1.25	41125	–	30	–	21030
1.5	41150	–	40	–	21040
2	41200	–	50	–	21050
2.5	41250	–	65	–	21065
2.75	41275	–	80	–	21080
3.5	41350	–	100	–	21100
4	41400	–	125	–	21125
5.5	41550	–	150	–	21150
7	41007	21007	200	–	21200

**Eaton**  
1000 Eaton Boulevard  
Cleveland, OH 44122  
United States  
Eaton.com

**Eaton's Power Systems Division**  
2300 Badger Drive  
Waukesha, WI 53188  
United States  
Eaton.com/cooperpowerseries

© 2017 Eaton  
All Rights Reserved  
Printed in USA  
Publication No. TD325004EN  
October 2017

Eaton is a registered trademark.

All trademarks are property  
of their respective owners.

For Eaton's Cooper Power series product  
information  
call 1-877-277-4636 or visit:  
[www.eaton.com/cooperpowerseries](http://www.eaton.com/cooperpowerseries).