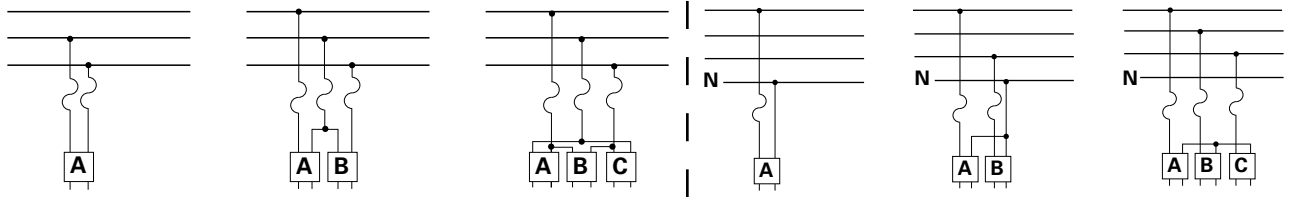
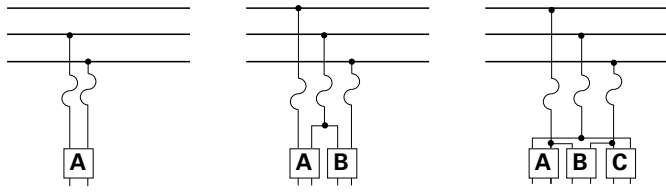


# Expulsion fuse links transformer protection

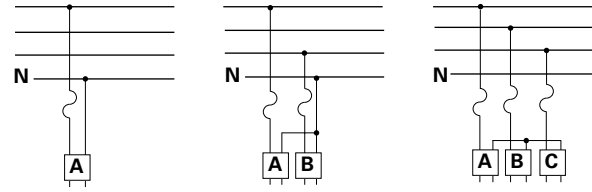


Suggested Primary Fusing for Distribution Transformers  
 Fuse Ratings Based on Use of Type "N" Fuse Links and High-Surge Type "H" Links  
 (Protection Between 200% and 300% Rated Load)

Delta-connected primary



Wye-connected primary



Transformer Size (kVA)	2400 Δ		2400/4160Y		4800 Δ		4800/8320Y	
	Rated amps	Link rating	Rated amps	Link rating	Rated amps	Link rating	Rated amps	Link rating
3	1.25	2H	2.16	3H	1.25	2H	.625	1H*
5	2.08	3H	3.61	5H	2.08	3H	1.042	1H
10	4.17	8	7.22	15	4.17	8	2.083	3H
15	6.25	10	10.8	20	6.25	10	3.125	5H
25	10.42	20	18.05	30	10.42	20	5.21	8
37.5	15.63	25	27.05	40	15.63	25	7.81	15
50	20.8	30	36.1	60	20.8	30	10.42	20
75	31.25	50	54.2	85	31.25	50	15.63	25
100	41.67	60	72.2	100	41.67	60	20.83	30
167	69.4	100	119.0	150	69.4	100	34.7	50
250	104.2	150	180.5	200	104.2	150	52.1	85
333	138.8	200	238.0	200	138.8	200	69.4	100
500	208.3		361.0		208.3		104.2	150

Transformer Size (kVA)	7200 Δ		7200/12470Y		7620/13200Y		12000 Δ	
	Rated amps	Link rating	Rated amps	Link rating	Rated amps	Link rating	Rated amps	Link rating
3	.416	1H*	.722	1H*	.416	1H*	.394	1H*
5	.694	1H*	1.201	1H*	.694	1H*	.656	1H*
10	1.389	2H	2.4	5H	1.389	2H	1.312	2H
15	2.083	3H	3.61	5H	2.083	3H	1.97	3H
25	3.47	5H	5.94	10	3.47	5H	3.28	5H
37.5	5.21	8	9.01	20	5.21	8	4.92	8
50	6.94	10	12.01	20	6.94	10	6.56	10
75	10.42	20	18.05	30	10.42	20	9.84	20
100	13.89	20	24.0	40	13.89	20	13.12	20
167	23.2	40	40.1	60	23.2	40	21.8	30
250	34.73	50	59.4	100	34.73	50	32.8	50
333	46.3	60	80.2	150	46.3	60	43.7	60
500	69.4	100	120.1	150	69.4	100	65.6	100

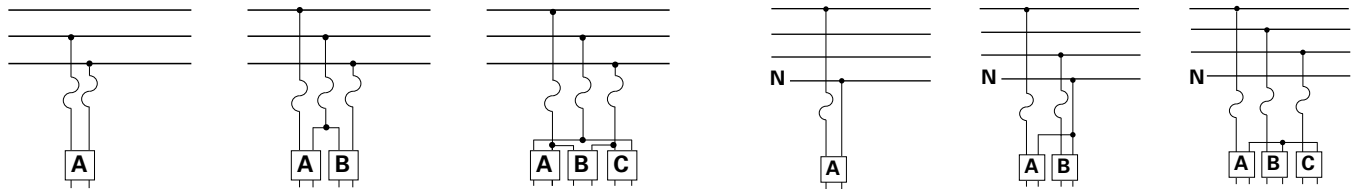
Transformer Size (kVA)	13200 Δ		14400 Δ		14400/24900Y	
	Rated amps	Link rating	Rated amps	Link rating	Rated amps	Link rating
3	.227	1H*	.394	1H*	.208	1H*
5	.379	1H*	.656	1H*	.347	1H*
10	.757	1H*	1.312	2H	.694	1H*
15	1.14	1H	1.97	3H	1.04	1H
25	1.89	3H	3.28	5H	1.74	2H
37.5	2.84	5H	4.92	8	2.61	3H
50	3.79	8	6.56	10	3.47	5H
75	5.68	8	9.84	20	5.21	8
100	7.57	15	13.12	20	6.94	10
167	12.62	20	21.8	30	11.6	20
250	18.94	30	32.8	50	17.4	30
333	25.23	40	43.7	60	23.1	40
500	37.88	60	65.6	100	34.7	50

\* Since this is the smallest link available and does not protect for 300% load, secondary protection is desirable.

Suggested Primary Fusing for Distribution Transformers  
 Fuse Ratings Based on Use of EEI-NEMA Type "K" or "T" Fuse Links and High-Surge Type "H" Links  
 (Protection Between 200% and 300% Rated Load)

Delta-connected primary

Wye-connected primary



Transformer Size (kVA)	2400 Δ				2400/4160Y				4800 Δ				4800/8320Y			
	Figures A and B		Figure C		Figures D, E, and F		Figures A and B		Figure C		Figures D, E, and F		Figures D, E, and F			
	Rated amps	Link rating	Rated amps	Link rating	Rated amps	Link rating	Rated amps	Link rating	Rated amps	Link rating	Rated amps	Link rating	Rated amps	Link rating		
3	1.25	2H	2.16	3H	1.25	2H	.625	1H*	1.08	1H	.625	1H*				
5	2.08	3H	3.61	5H	2.08	3H	1.042	1H	1.805	3H	1.042	1H				
10	4.17	6	7.22	10	4.17	6	2.083	3H	3.61	5H	2.083	3H				
15	6.25	8	10.8	12	6.25	8	3.125	5H	5.42	6	3.125	5H				
25	10.42	12	18.05	25	10.42	12	5.21	6	9.01	12	5.21	6				
37.5	15.63	20	27.05	30	15.63	20	7.81	10	13.5	15	7.81	10				
50	20.8	25	36.1	50	20.8	25	10.42	12	18.05	25	10.42	12				
75	31.25	40	54.2	65	31.25	40	15.63	20	27.05	30	15.63	20				
100	41.67	50	72.2	80	41.67	50	20.83	25	36.1	50	20.83	25				
167	69.4	80	119.0	140	69.4	80	34.7	40	60.1	80	34.7	40				
250	104.2	140	180.5	200	104.2	140	52.1	65	90.1	100	52.1	65				
333	138.8	140	238.0		138.8	140	69.4	80	120.1	140	69.4	80				
500	208.3	200	361.0		208.3	200	104.2	140	180.5	200	104.2	140				

Transformer Size (kVA)	7200 Δ				7200/12470Y				7620/13200Y				12000 Δ			
	Figures A and B		Figure C		Figures D, E, and F		Figures D, E, and F		Figures A and B		Figure C		Figures D, E, and F		Figure C	
	Rated amps	Link rating	Rated amps	Link rating	Rated amps	Link rating	Rated amps	Link rating	Rated amps	Link rating	Rated amps	Link rating	Rated amps	Link rating	Rated amps	Link rating
3	.416	1H*	.722	1H*	.416	1H*	.394	1H*	.250	1H*	.432	1H*				
5	.694	1H*	1.201	1H*	.694	1H*	.656	1H*	.417	1H*	.722	1H*				
10	1.389	2H	2.4	5H	1.389	2H	1.312	2H	.833	1H*	1.44	2H				
15	2.083	3H	3.61	5H	2.083	3H	1.97	3H	1.25	1H	2.16	3H				
25	3.47	5H	5.94	8	3.47	5H	3.28	5H	2.083	3H	3.61	5H				
37.5	5.21	6	9.01	12	5.21	6	4.92	6	3.125	5H	5.42	6				
50	6.94	8	12.01	15	6.94	8	6.56	8	4.17	6	7.22	10				
75	10.42	12	18.05	25	10.42	12	9.84	12	6.25	8	10.8	12				
100	13.89	15	24.0	30	13.89	15	13.12	15	8.33	10	14.44	15				
167	23.2	30	40.1	50	23.2	30	21.8	25	13.87	15	23.8	30				
250	34.73	40	59.4	80	34.73	40	32.8	40	20.83	25	36.1	50				
333	46.3	50	80.2	100	46.3	50	43.7	50	27.75	30	47.5	65				
500	69.4	80	120.1	140	69.4	80	65.6	80	41.67	50	72.2	80				

Transformer Size (kVA)	13200 Δ				14400 Δ				14400/24900Y				20000/34000Y			
	Figures A and B		Figure C		Figures A and B		Figure C		Figures D, E, and F		Figures D, E, and F		Figures D, E, and F		Figures D, E, and F	
	Rated amps	Link rating	Rated amps	Link rating	Rated amps	Link rating	Rated amps	Link rating	Rated amps	Link rating	Rated amps	Link rating	Rated amps	Link rating	Rated amps	Link rating
3	.227	1H*	.394	1H*	.208	1H*	.361	1H*	.208	1H*						
5	.379	1H*	.656	1H*	.347	1H*	.594	1H*	.374	1H*						
10	.757	1H*	1.312	2H	.694	1H*	1.20	2H	.694	1H*	.50	1H*				
15	1.14	1H	1.97	3H	1.04	1H	1.80	3H	1.04	1H	.75	1H*				
25	1.89	3H	3.28	5H	1.74	2H	3.01	5H	1.74	2H	1.25	2H				
37.5	2.84	5H	4.92	6	2.61	3H	4.52	6	2.61	3H	1.875	2H				
50	3.79	6	6.56	8	3.47	5H	5.94	8	3.47	5	2.50	3H				
75	5.68	6	9.84	12	5.21	6	9.01	12	5.21	6	3.75	5H				
100	7.57	8	13.12	15	6.94	8	12.01	15	6.94	8	5.00	6				
167	12.62	15	21.8	25	11.6	12	20.1	25	11.6	12	8.35	10				
250	18.94	25	32.8	40	17.4	20	30.1	40	17.4	20	12.5	15				
333	25.23	30	43.7	50	23.1	30	40.0	50	23.1	30	16.65	20				
500	37.88	50	65.6	80	34.7	40	60.0	80	34.7	40	25.00	30				

\* Since this is the smallest link available and does not protect for 300% load, secondary protection is desirable.

**Eaton**  
1000 Eaton Boulevard  
Cleveland, OH 44122  
United States  
Eaton.com

**Eaton's Power Systems Division**  
2300 Badger Drive  
Waukesha, WI 53188  
United States  
Eaton.com/cooperpowerseries

© 2017 Eaton  
All Rights Reserved  
Printed in USA  
Publication No. TD132008EN  
September 2017

Eaton is a registered trademark.

All trademarks are property  
of their respective owners.

For Eaton's Cooper Power series product  
information  
call 1-877-277-4636 or visit:  
[www.eaton.com/cooperpowerseries](http://www.eaton.com/cooperpowerseries).