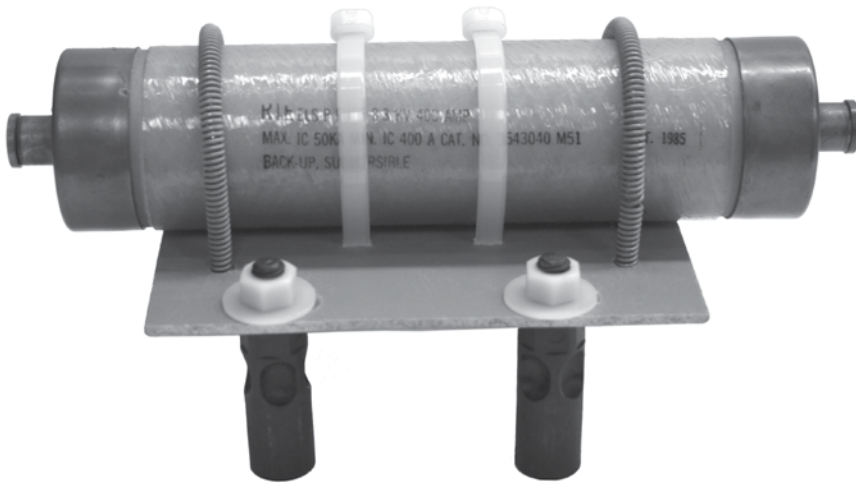


# ELSP fuse holder



## General

Eaton's Cooper Power™ series ELSP fuse holder is used to support the ELSP oil immersible current-limiting fuses, where the fuses are rated 23 kV and below.

The support assembly consists of a polyglass board and four nylon spacers attached with nylon nuts. The fuse is fastened to the board by means of two stainless steel tie-downs and two nylon ty-raps. Experience has shown that this combination of fuse ties provides the best insurance that the fuse will remain stationary and secure during shipment of the apparatus.

The ELSP fuse and holder are easily mounted inside the transformer. The fuse holder may be mounted anywhere there is space and in any position. Good design practice dictates that the fuse be located as near as practical to the incoming primary bushing.

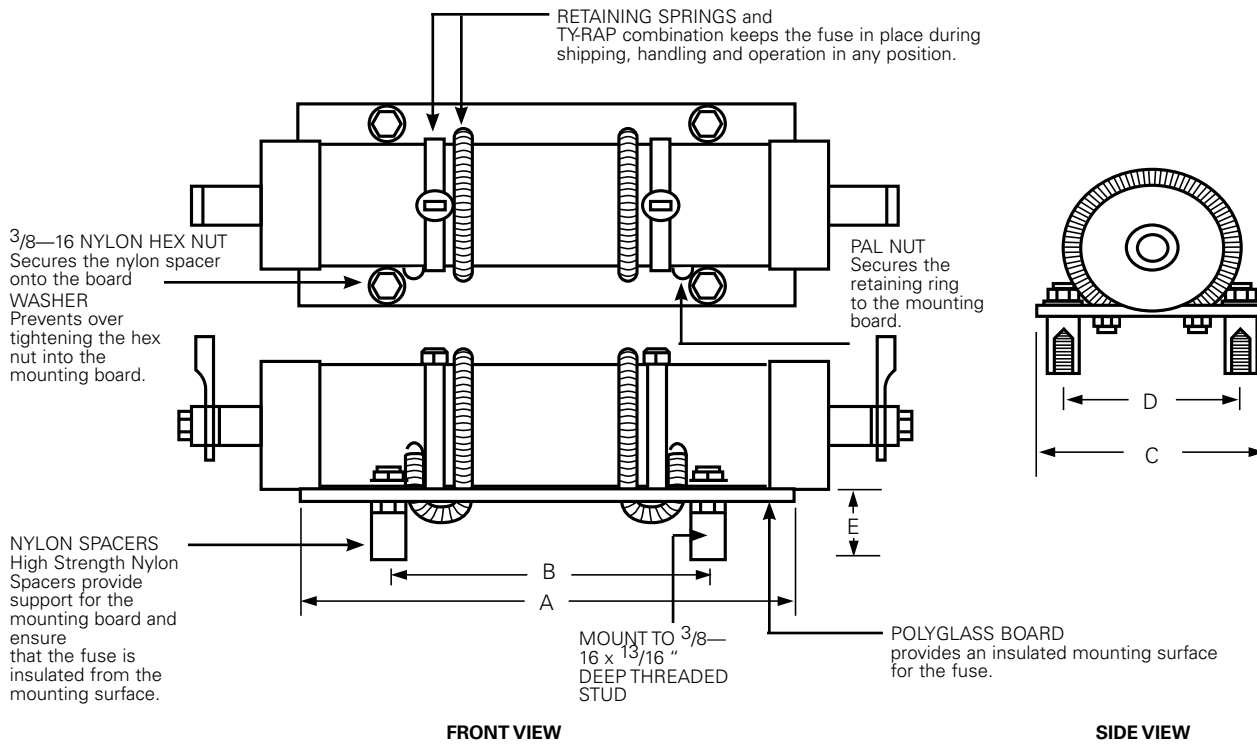
## Installation

The fuse is mounted on the board using springs and ties. The nylon spacers are then mounted on welded-in studs or with bolts on a bracket or crossbar. The board assembly with fuse is positioned over the four spacers and tightened with the nylon nuts. The leads are connected to each end of the fuse using a ¼ inch crimped terminal lug. Refer to *Service Information MN132001EN ELSP Current-Limiting Backup Fuse Installation Instructions* for details.

**EATON**

Powering Business Worldwide

**Features and detailed description**



**Figure 1. Front and side views of fuse holder showing dimension.**

**Note:** Dimensions given are for reference only.

**Table 1. ELSP Fuse Holder Dimensional Information**

Holder Type	Dimensions				
	A	B	C	D	E
2" dia Single	6.0 (152)	3.00 (76)	5.0 (127)	4.13 (105)	2.1 (53)
2" dia. Parallel and 3" dia. Single	9.0 (229)	5.98 (152)	7.0 (178)	5.92 (150)	2.1 (53)

**Ordering information**

To order the ELSP fuse holder, specify the fuse holder required from Table 2.

**Table 2. ELSP Fuse Holder**

Description	Catalog Number
Single Fuse Holder (2" dia. fuse)	3409661C05M
Parallel Fuse Holder (2" dia. fuse)	3409661C07M
Single Fuse Holder (3" dia. fuse)	3409661C08M*

\* Cannot be used with 38 kV fuses.

**Eaton**  
1000 Eaton Boulevard  
Cleveland, OH 44122  
United States  
Eaton.com

**Eaton's Cooper Power Systems Division**  
2300 Badger Drive  
Waukesha, WI 53188  
United States  
Eaton.com/cooperpowerseries

© 2015 Eaton  
All Rights Reserved  
Printed in USA  
Publication No. CA132029EN

Eaton is a registered trademark.  
All other trademarks are property  
of their respective owners.

For Eaton's Cooper Power series product information call 1-877-277-4636 or visit:  
www.eaton.com/cooperpowerseries.