

600 A 15 and 25 kV class PUSH-OP™ insulated standoff bushing



General

Eaton meets the full requirements of IEEE Std 386™-2006 standard, Separable Insulated Connector Systems with its Cooper Power™ series 600 A, 15 and 25 kV insulated PUSH-OP™ standoff bushing.

The bushing provides a single deadbreak interface made of high quality insulating epoxy material. It is used in switchgear, transformers, and other apparatus to isolate and sectionalize an energized cable. Temporary or permanent parking of energized 600 A 15 and 25 kV PUSH-OP deadbreak connectors is simplified with the use of an insulated standoff bushing.

The PUSH-OP insulated standoff bushing is designed to be installed in the parking stand mounted on a switchgear, transformer, or other apparatus. A drain wire lug is provided on the standoff bracket for attachment of a drain wire lead to ensure deadfront construction. The bushing provides a fully-shielded, submersible connection for deadbreak operation.

All standoff bushing brackets have a stainless steel eyebolt with a brass pressure foot. The bushing body is bolted to a stainless steel base bracket using a stainless steel bolt. The bracket and latch mechanism provides easy installation of a PUSH-OP connector without any threading operations.

Installation

A clampstick tool is used to place the standoff bushing in the parking stand on the front plate of the apparatus. The PUSH-OP connector is then installed onto the standoff bushing tap. Refer to *Service Information S600-65-1 600 A 15/25 and 35 kV Class PUSH-OP Insulated Standoff Bushing Installation Instructions* for complete installation details.

Production tests

Tests are conducted in accordance with IEEE Std 386™-2006 standard.

- ac 60 Hz 1 Minute Withstand
 - 40 kV
- Minimum Corona Voltage Level
 - 19 kV

Tests are conducted in accordance with Eaton requirements.

- Physical Inspection
- Periodic Dissection
- Periodic Fluoroscopic Analysis

EATON

Powering Business Worldwide

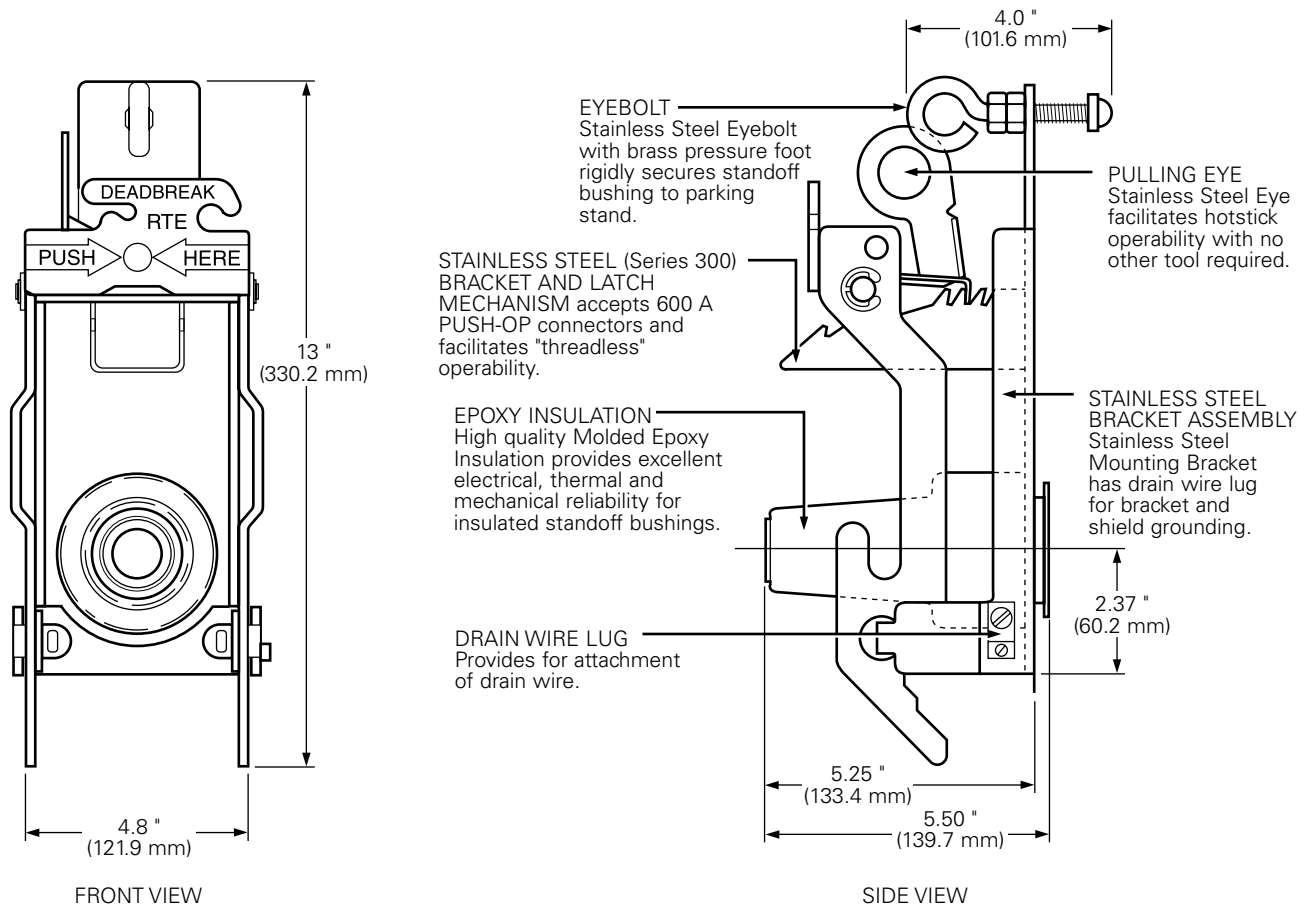


Figure 1. Front view shows standoff bushing and latch mechanism. Side view shows standoff bushing and latch mechanism with bracket assembly.

Note: Dimensions given are for reference only.

Table 1. Voltage Ratings and Characteristics —Insulated Standoff Bushing

Description	kV
Standard Voltage Class	25
Maximum Rating Phase-to-Ground	15.2
ac 60 Hz 1 Minute Withstand	40
dc 15 Minute Withstand	78
BIL and Full Wave Crest	125
Minimum Corona Voltage Level	19

Voltage ratings and characteristics are in accordance with IEEE Std 386™-2006 standard.

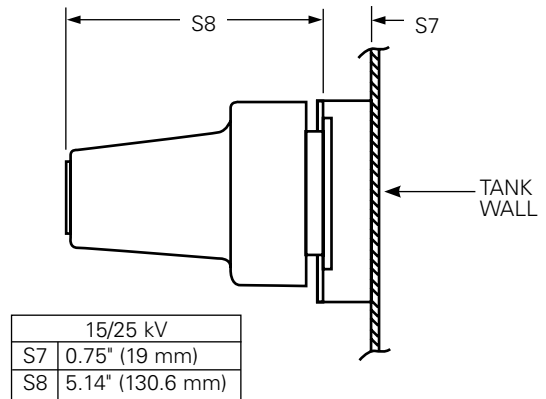


Figure 2. PUSH-OP stacking dimensions.

Ordering information

To order a 15 and 25 kV Class PUSH-OP Standoff Bushing Kit, refer to Table 2.

Table 2. Standoff Bushing Kit

Description	Catalog Number
Insulated Bushing	PISB625
Insulated Standoff Bushing with Hitch Pin	PISB625HP

Each kit contains:

- Standoff Bushing with Bracket
- Shipping Cap (not for energized operation)
- Silicone Lubricant
- Installation Instruction Sheet

Eaton
1000 Eaton Boulevard
Cleveland, OH 44122
United States
Eaton.com

Eaton's Cooper Power Systems Division
2300 Badger Drive
Waukesha, WI 53188
United States
Eaton.com/cooperpowerseries

© 2015 Eaton
All Rights Reserved
Printed in USA
Publication No. CA650043EN

Eaton, Cooper Power, and PUSH-OP are trademarks of Eaton in the U.S. and other countries. You are not permitted to use these trademarks without the prior written consent of Eaton.

IEEE Std 386™-2006 and IEEE Std 592™-2007 standards are trademarks of the Institute of Electrical and Electronics Engineers, Inc., (IEEE). This publication/product is not endorsed or approved by the IEEE.

For Eaton's Cooper Power series PUSH-OP bushing product information call 1-877-277-4636 or visit: www.eaton.com/cooperpowerseries.