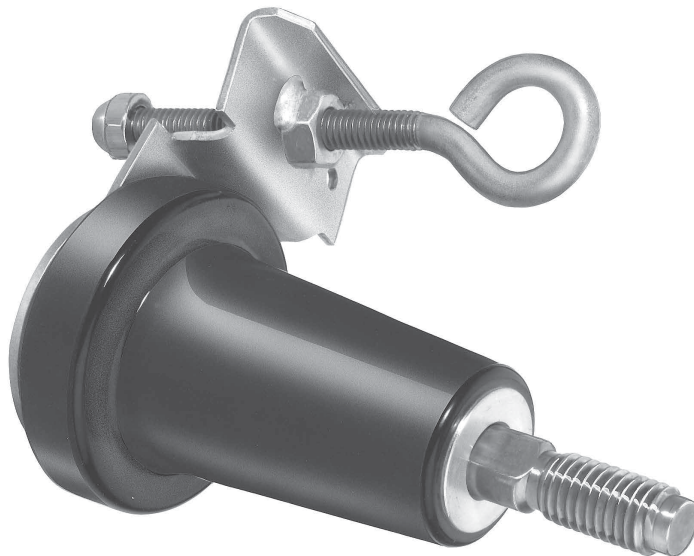


600 A 15/25 kV class standoff bushings



General

Eaton's Cooper Power series 600 A, 15/25 kV insulated standoff bushing meets the full requirements of IEEE Std 386™-2016 standard — "Separable Insulated Connector Systems", and provides a single deadbreak interface made of high quality insulating epoxy material. It is used in pad-mount cabinets, underground vaults and other apparatus to isolate and sectionalize an energized cable.

Temporary or permanent parking of energized 600 A 15/25 kV deadbreak connectors that conform to IEEE Std 386™-2016 standard is simplified with the use of insulated standoff bushings.

The insulated standoff bushing is designed to be installed in the parking stand mounted on a transformer or other apparatus. A drain wire lug is provided on the standoff bracket for attachment of a drain wire to ensure deadfront construction. The bushing provides a fully-shielded, submersible connection for deadbreak operation.

Insulated standoff bushings for T-OP™ II connectors meet all the requirements and features of the standard insulated standoff bushing. They incorporate the appropriate studs which allow for parking of a 600 A T-OP II connector.

Eaton's Cooper Power series 600 A, 15/25 kV grounded standoff bushing is designed to be installed in the parking stand bracket mounted on the transformer or other apparatus. A 2/0 AWG copper, 5-foot jacketed cable is connected to the bushing for attachment to system ground. The bushing provides a fully visible ground and submersible connection for temporary or permanent parking of 600 A deadbreak connectors that conform to IEEE Std 386™-2016 standard.

All standoff bushing brackets have a stainless steel eyebolt with a brass pressure foot. The bushing body is bolted to a stainless steel base bracket using a stainless steel bolt. Special pins ensure firm location of the bushing on the bracket.

EAT•N

Powering Business Worldwide

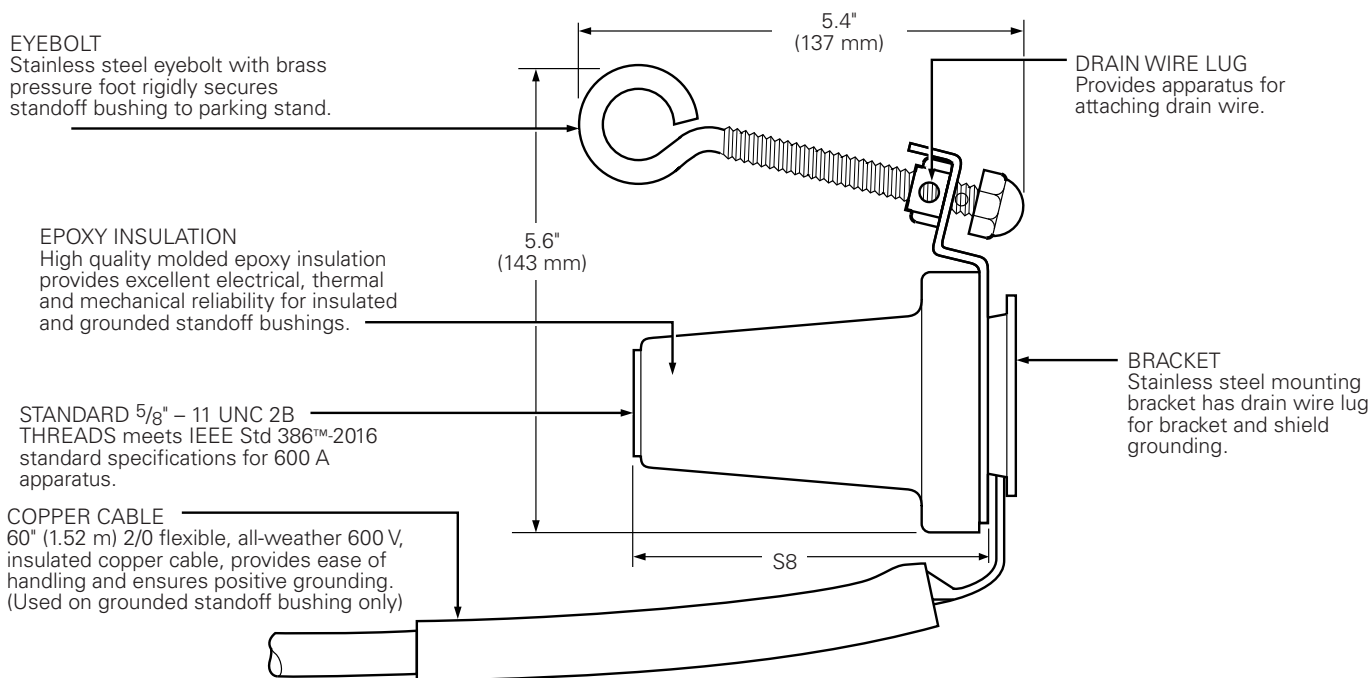
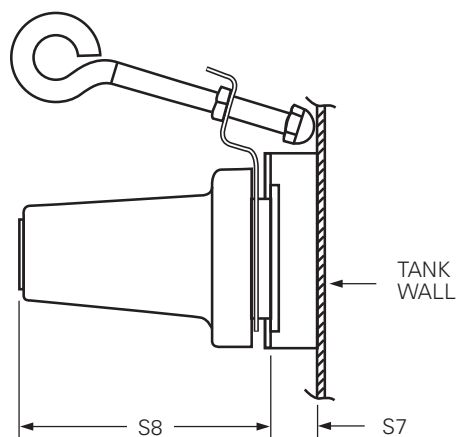


Figure 1. Diagram shows grounded standoff bushing made with molded epoxy insulation with five feet of insulated copper.

Note: Dimensions given are for reference only.



15/25 kV		
	Grounded	Insulated
S7	0.75" (19 mm)	0.75" (19 mm)
S8	4.2" (106 mm)	4.2" (106 mm)

Figure 2. Standoff bushing stacking dimensions.

Installation

A hotstick tool is used to place the standoff bushing in the parking stand on the frontplate of the apparatus. Special tools are required to thread de-energized 600 A connectors onto the standoff bushing. Refer to the appropriate connector catalog section for further clarification. Refer to *Service Information MN650036EN 600 A 15, 25, and 35 kV Class Insulated Standoff Bushing Installation Instructions* for details on the insulated standoff bushing. For installation of the grounded standoff bushing, refer to *Service Information MN650045EN 15, 25, and 35 kV Class Deadbreak Grounding Standoff Bushing Installation Instructions* for details.

Production tests (insulated standoff bushing)

Tests conducted in accordance with IEEE Std 386™-2016 standard:

- ac 60 Hz 1 Minute Withstand
 - 40 kV
- Minimum Corona Voltage Level
 - 19 kV

Tests conducted in accordance with Eaton requirements:

- Physical Inspection
- Periodic Dissection
- Periodic X-ray Analysis

Table 1. Voltage Ratings and Characteristics – Insulated Standoff Bushing

Description	kV
Standard Voltage Class	25
Maximum Rating Phase-to-Ground	16.2
ac 60 Hz 1 Minute Withstand	40
dc 15 Minute Withstand	78
BIL and Full Wave Crest	125
Minimum Corona Voltage Level	19

Voltage ratings and characteristics are in accordance with IEEE Std 386™-2016 standard.

Table 2. Current Ratings and Characteristics – Grounded Standoff Bushing

Description	Amperes
Short Time	25,000 A rms symmetrical for 0.17 s

Current ratings and characteristics are in accordance with IEEE Std 386™-2016 standard.

Ordering information

To order a 15/25 kV Class Standoff Bushing Kit, refer to Table 3.

Each kit contains:

- Standoff Bushing with Bracket
- Shipping Cap (not for energized operation)
- Silicone Lubricant
- Installation Instruction Sheet

Table 3. Ordering Selection Guide

Example: To order an Insulated Bushing with Copper Stud Loose (Shown Below)
 Catalog Number would be **I SB 625 C SC**

← Standard Options →

Digits: 1 2 3 4 5 6

I SB625 C S C

Digit 1	Description
G	For Grounded Bushing**
I	For Insulated Bushing

Digit 2	Given	Digit 3	Description
		A	For Aluminum Bushing
		C	For Copper Bushing*

Digit 4 & 5	Description
S A	Aluminum Stud
S T	TOP II Stud
S C	Copper Stud
Leave Blank	No Stud Required

Digit 6	Description
P	Stud Installed at Factory
Leave Blank	Bagged Stud Loose in Box
Leave Blank	No Stud Required

* Eaton recommends when a copper Standoff is designated – use only copper stud.

** Grounded bushing available in copper only. Digit 3 will be "C".

Eaton
1000 Eaton Boulevard
Cleveland, OH 44122
United States
Eaton.com

Eaton's Power Systems Division
2300 Badger Drive
Waukesha, WI 53188
United States
Eaton.com/cooperpowerseries

© 2019 Eaton
All Rights Reserved
Printed in USA
Publication No. CA650066EN
August 2019

Eaton is a registered trademark.
All other trademarks are property
of their respective owners.

For Eaton's Cooper Power series standoff
bushing product information
call 1-877-277-4636 or visit:
www.eaton.com/cooperpowerseries.