

28 kV class fused loadbreak elbow connector



General

Eaton's Cooper Power™ series 28 kV Class fused loadbreak elbow connector combines a fully-shielded and insulated plug-in termination with full-range current-limiting fuse protection. The fused loadbreak elbow connector provides a convenient and cost effective means to adding fused protection to underground distribution systems, for connecting underground cables to transformers, switching cabinets and junctions equipped with IEEE Std 386™-2006 standard 200 A, 28 kV Class loadbreak bushings. Designed as a switching device, it is tested at the maximum fuse rating in accordance to the procedures of IEEE Std 386™ standard - latest revision.

Fused loadbreak elbow connectors are molded using high quality peroxide-cured insulating and semi-conducting EPDM rubber. Standard features include a copper probe adapter, coppertop connector, copper loadbreak probe with an ablative arc-follower tip and stainless steel reinforced pulling-eye. The capacitive test points are made of corrosion resistant plastic and are used for voltage detection.

Cable ranges are designed to accept a wide range of cable conductor and insulation sizes and accommodate cable manufactured to either AEIC or ICEA standards.

The coppertop compression connector consists of an aluminum crimp barrel inertia-welded to a copper lug and provides a connection to transition from the cable to the current-limiting fuse. The aluminum barrel makes the connector easy to crimp and the copper lug ensures a reliable, tight, cool operating connection with the current-limiting fuse.

Design tests

To assure a superior level of performance the fused loadbreak elbow connector has been tested according to applicable sections of the following ANSI® and IEEE® standards:

- IEEE Std C37.40™ standard Service Conditions and Definitions for High-Voltage Fuses
- IEEE Std C37.41™ standard Design Tests for High-Voltage Fuses
- IEEE Std 386™ standard for Separable Insulated Connector Systems
- ANSI® C37.47 Standard Specifications for Distribution Fuse Disconnecting Switches and Current-Limiting Fuses

EATON

Powering Business Worldwide

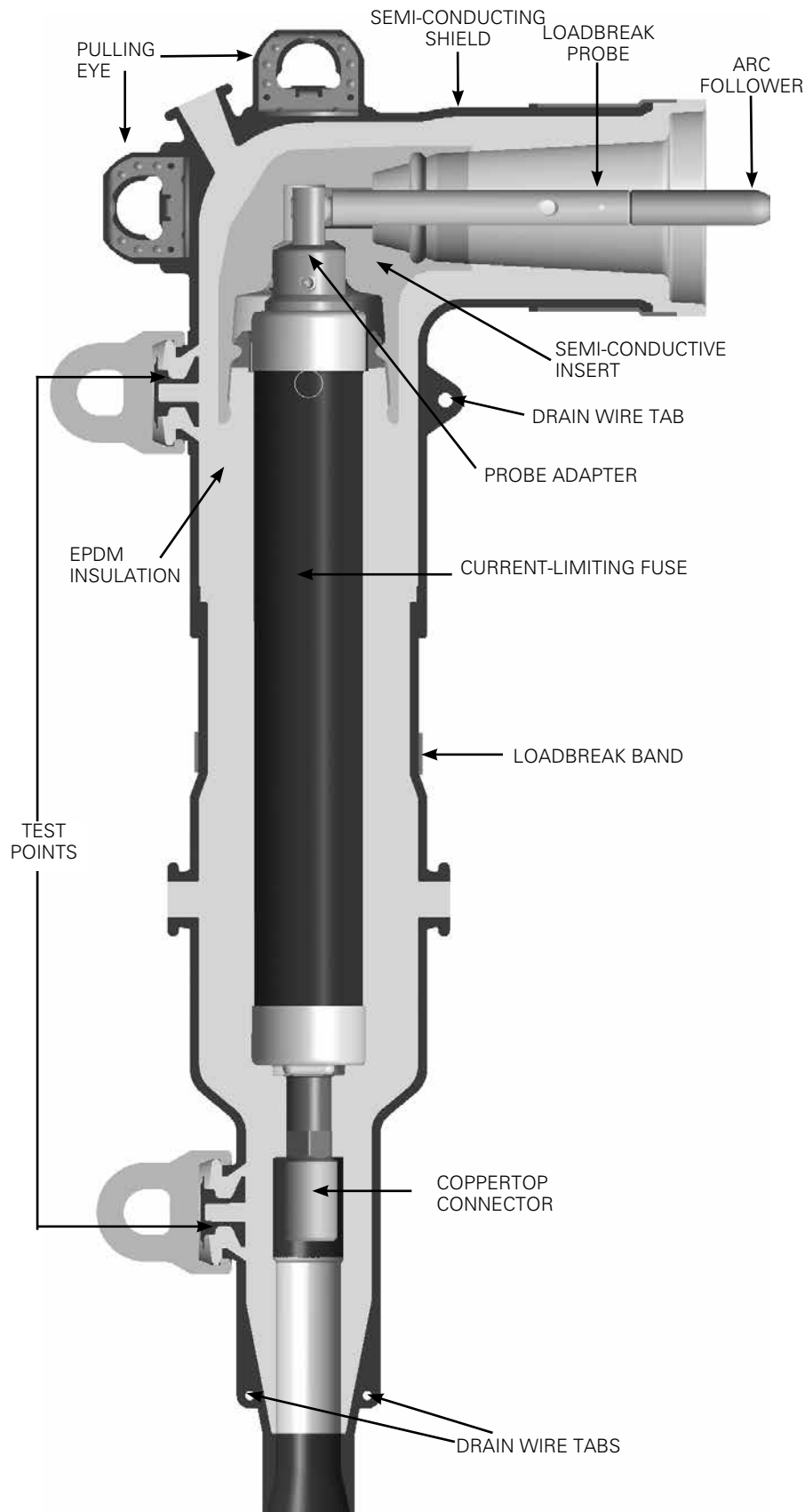
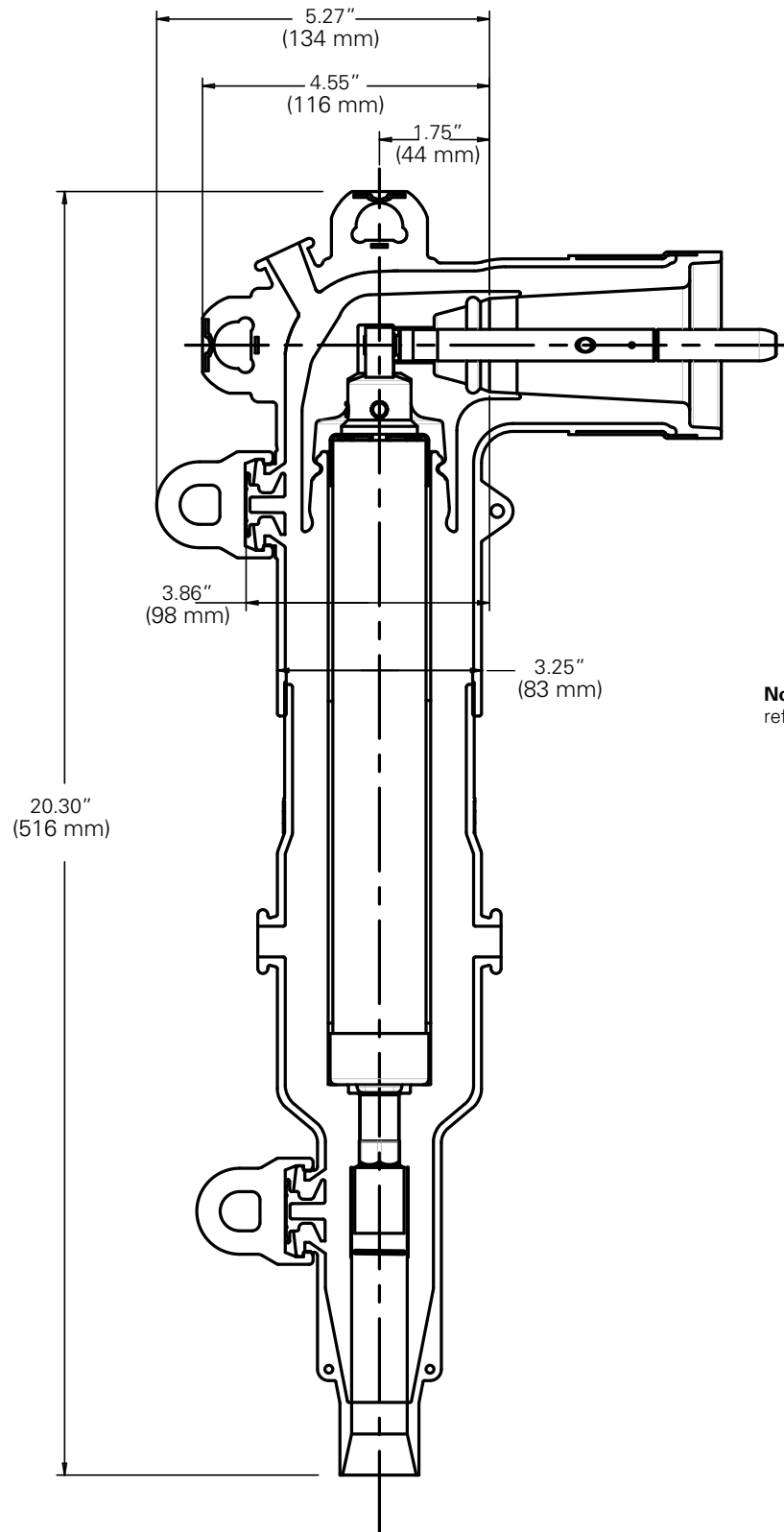


Figure 1. 28 kV Class fused Loadbreak elbow connector cutaway illustrates design features.



Note: Dimensions given are for reference only.

Figure 2. 28 kV Class fused loadbreak elbow connector profile and stacking dimensions shown.

Installation

Cable stripping and scoring tools available from various tool manufacturers are recommended for use when installing fused loadbreak elbows. After preparing the cable, the cable housing is pushed onto the cable. The current-limiting fuse is threaded into the coppertop connector using the supplied hex wrench. The probe adapter and elbow housing are installed and loadbreak probe threaded into the probe adapter. Use a clampstick to perform loadmake and loadbreak operations. Refer to *Service Information MN650014EN Fused Loadbreak Elbow Connector Fuse Installation Instructions*.

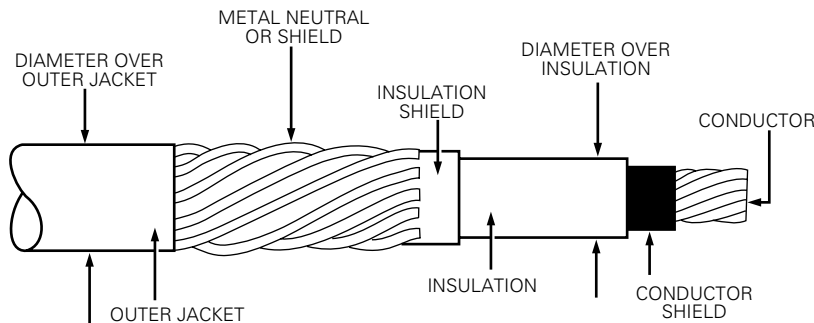


Figure 3. Illustration showing typical construction of medium voltage underground cable.

Production tests

Tests conducted in accordance with IEEE Std 386™-2006 standard:

- AC 60 Hz 1 Minute Withstand
 - 45 kV
- Minimum Corona Voltage Level
 - 21.5 kV
- Test Point Voltage Test

Tests conducted in accordance with Eaton requirements:

- Physical Inspection
- Periodic Dissection
- Periodic Fluoroscopic Analysis

Table 1. Voltage Ratings and Characteristics

Description	kV
Standard Voltage Class	28
Maximum Rating Phase-to-Phase	16.2
Maximum Rating Phase-to-Ground	16.2
AC 60 Hz 1 Minute Withstand	45
DC 15 Minute Withstand	100
BIL and Full Wave Crest	125
Minimum Corona Voltage Level	21.5

Voltage ratings and characteristics are in accordance with IEEE Standard 386™-2006 standard.

Table 2. Current Ratings and Characteristics

Description	Amperes
Continuous	Fuse rating
Switching	10 operations at fuse current rating at 17.2 kV
Fault Closure	10,000 A rms symmetrical at 15.5 kV after 10 switching operations

Ordering information

The fused loadbreak elbow connector, elbow/cable housing kits are packaged in individual corrugated cardboard cartons. Each kit contains:

- Fused Elbow, Cable Housing
- Fused Elbow, Elbow Housing
- Coppertop Compression Connector
- Loadbreak Probe
- Probe Adapter and Set Screws
- Probe Installation Tool
- 1/8" Hex Wrench
- Silicone Lubricant
- Installation Instruction Sheet

Note: Current-Limiting fuses sold separately. See Tables 6 and 7 for fuse recommendations and Table 4 for electrical ratings and catalog number information.

To order a 28 kV Class Fused Loadbreak Elbow Connector Kit follow the easy steps below.

STEP 1: Determine the cable’s diameter over the electrical insulation as shown in Figure 3 (including tolerances) from cable manufacturer. Then identify a cable range from Table 3 that brackets the minimum and maximum insulation diameters. Select the CABLE RANGE CODE from the far right column.

STEP 2: Identify the conductor size and type in Table 4 and select the CONDUCTOR CODE from the far right column.

For an elbow kit without a compression connector, use “00” for the conductor code.

STEP 3: For a Fused Loadbreak Elbow and Cable Housing kit order:

LFEP228TFEC CABLE RANGE CODE CONDUCTOR CODE AT

Table 3. Cable Range for Loadbreak Elbow

Inches	Millimeters	Cable Range Code
0.610" - 0.820"	15.5 - 20.8	A
0.740" - 0.980"	18.8 - 24.9	B
0.910" - 1.180"	23.1 - 29.9	C

EXAMPLE: Select a fused elbow probe and conductor housing kit for 1/0 compressed stranded with a minimum insulation diameter of 0.830" (21.0 mm) and a maximum diameter of 0.890" (22.6 mm).

STEP 1: From Table 3, identify the cable range 0.740"—0.980" (18.8 mm - 24.9 mm) and select the "B" CABLE RANGE CODE.

STEP 2: The conductor size is a 1/0 and the type is compressed.

From Table 4, under the column "Class B Stranded or Compressed" identify 1/0 and select the "06" conductor code.

STEP 3: Order catalog number.

LFEP228TFECB06AT

Table 4. Conductor Size and Type

Class B Stranded or Compressed		Compact or Solid		CONDUCTOR CODE
AWG	mm ²	AWG	mm ²	
No Connector				00
		#2	35	03
#2	35	#1	—	04
#1	—	1/0	50	05
1/0	50	2/0	70	06
2/0	70	3/0	—	07
3/0	—	4/0	95	08
4/0	95	250	120	09
250*	120	—	—	10

* Compressed stranding only.

Note: Coppertop compression connector may be used on both aluminum and copper cable conductors.

Table 5. Fused Loadbreak Elbow Connector Fuse Electrical Ratings and Catalog Numbers

Nominal System Voltage Class - kV	Nominal Fuse Voltage Rating kV	Nominal Fuse Current rating in Amperes	Fuse Catalog Number	Maximum Continuous Current			Minimum Melt I ² t (A ² s)	Maximum Total I ² t (A ² s)
				25°C	40°C	65°C		
28	17.2	6	FEF172A006	8.5	8.3	8.0	710	3,800
		8	FEF172A008	11.7	11.3	10.9	1,000	5,435
		10	FEF172A010	14.4	13.9	13.5	1,200	5,500
		12	FEF172A012	16.0	15.5	15.0	1,200	5,500
		18	FEF172A018	21.1	20.4	19.7	1,500	7,800
		20	FEF172A020	24.6	23.7	23.0	2,425	12,000

200 A shorting bar (solid link)

The 200 A fused loadbreak elbow connector shorting bar is used for temporary restoration of service when a standard fuse is not available and can also be used during fault locating and grounding.

Catalog FESBA kit contains:

- (1) Shorting Bar (solid Link)
- (1) 3/16" re-usable hex wrench
- (1) 1/8" re-usable hex wrench
- (25) Adapter set screws
- (5) Wire probe wrenches
- (1) Bleeder strap
- (1) Re-usable caution tag with clasp
- (1) Hard plastic carrying case
- (1) Installation Instruction Sheet



Figure 4. Shorting bar kit, catalog FESBA

Table 6. Recommended Fuse Ratings for Single- and Three-Phase Applications

Nominal Fuse Rated Voltage - 8.3 kV											Nominal Fused Rated Voltage - 15.5 and 17.2 kV							
Transformer Single-Phase Voltage Rating (kV) - Phase-to-Ground																		
1ø kVA	2.4 kV		4.16 kV		4.8 kV		6.93 - 7.2 kV		7.62 & 7.97 kV		12 & 12.47 kV		13.2 kV		13.8 kV		14.4 kV	
	A	B	A	B	A	B	A	B	A	B	A	B	A	B	A	B	A	B
10	-	6	-	6*	-	-	-	6*	-	6*	-	6*	-	6*	-	6*	-	6*
15	8	10	-	6	-	6	-	6*	-	6*	-	6*	-	6*	-	6*	-	6*
25	12	20	8	10	-	8	-	6	-	6	-	6*	-	6*	-	6*	-	6*
37.5	20	25	10	18	10	12	-	8	-	8	-	6	-	6*	-	6	-	6*
50	25	40	18	20	12	20	10	12	8	10	-	6	-	6	-	6	-	6
75	40	-	20	30	20	30	12	20	12	18	8	10	8	8	8	10	-	8
100	-	-	30	-	30	40	25	30	18	25	10	18	10	12	10	18	12	10
167	-	-	-	-	-	-	40	-	25	40	18	-	18	-	18	-	20	20
250	-	-	-	-	-	-	-	-	-	-	-	-	-	-	-	-	-	-
333	-	-	-	-	-	-	-	-	-	-	-	-	-	-	-	-	-	-
500	-	-	-	-	-	-	-	-	-	-	-	-	-	-	-	-	-	-

Nominal Fuse Rated Voltage - 8.3 kV											Nominal Fused Rated Voltage - 15.5 and 17.2 kV					
Transformer Three-Phase Voltage Rating (kV) - Phase-to-Phase																
3ø kVA	2.4 kV		4.16 kV		4.8 kV		8.32 kV		12.47 kV		13.2 to 14.4 kV		20.8 kV		22.9 - 24.9 kV	
	A	B	A	B	A	B	A	B	A	B	A	B	A	B	A	B
30	10	12	-	6	-	6	-	6*	-	6*	-	6*	-	6*	-	6*
45	12	20	8	10	-	8	-	6	-	6*	-	6*	-	6*	-	6*
75	20	30	12	20	10	18	-	8	-	6	-	6*	-	6	-	6*
112.5	40	-	20	28	18	25	10	12	-	8	-	8	-	8	6	6
150	-	-	25	40	20	30	12	20	-	12	8	12	8	10	8	8
225	-	-	40	-	40	-	20	25	12	20	12	18	12	12	10	10
300	-	-	-	-	-	-	25	40	18	25	18	25	12	18	18	12
500	-	-	-	-	-	-	40	-	30	40	30	40	18	-	-	-
750	-	-	-	-	-	-	-	-	-	40	-	-	-	-	-	-
1000	-	-	-	-	-	-	-	-	-	-	-	-	-	-	-	-
1500	-	-	-	-	-	-	-	-	-	-	-	-	-	-	-	-

* Fuse allows more than 300% of the transformer rating.

Notes:

- Fuse selection is based on the continuous current rating of the fuses at 40°C
- Fuses in listed Column A allow between 1.4 and 2 times the rated current of the transformer; those listed in Column B, allow 2-3 times the rated current of the transformer.
- Recommended fuses meet inrush criteria of 12 times transformer full load current for 0.1 second and 25 times full load current for 0.01 second. Fuses also meet cold load pickup criteria of 6 times transformer full load current for 1 second and 3 times full load current of 10 seconds.
- For three-phase applications, recommendations are limited to GRDY-GRDY transformers with no more than 50% delta connected secondary load, along with certain other assumptions. It is common practice to use line-to-ground rated fuses.

Table 7. Recommended Fuse Ratings for Three-Phase Delta Applications

Nominal Fuse Rated Voltage - 8.3 kV									Nominal Fused Rated Voltage - 15.5 and 17.2 kV			
Transformer Three-Phase Voltage Rating (kV) - Phase-to-Phase												
3ø kVA	2.4 kV		4.16 kV		4.8 kV		8.32 kV		12.47 kV		13.2 to 14.4 kV	
	A	B	A	B	A	B	A	B	A	B	A	B
30	10	12	-	6	-	6	-	6*	-	6*	-	6*
45	12	20	8	10	-	8	-	6	-	6*	-	6*
75	20	30	12	20	10	18	-	8	-	6	-	6*
112.5	40	-	20	28	18	25	10	12	-	8	-	8
150	-	-	25	40	20	30	12	20	-	12	8	12
225	-	-	40	-	40	-	20	25	12	20	12	18
300	-	-	-	-	-	-	25	40	18	20	18	20 ¹
500	-	-	-	-	-	-	40	-	-	-	-	-
750	-	-	-	-	-	-	-	-	-	-	-	-
1000	-	-	-	-	-	-	-	-	-	-	-	-
1500	-	-	-	-	-	-	-	-	-	-	-	-

* Fuse allows more than 300% of the transformer rating.

¹ 20 A @ 14.4 kV only.

Notes:

- Fuse selection is based on the continuous current rating of the fuses at 40°C
- Fuses in listed Column A allow between 1.4 and 2 times the rated current of the transformer; those listed in Column B, allow 2-3 times the rated current of the transformer.
- Recommended fuses meet inrush criteria of 12 times transformer full load current for 0.1 second and 25 times full load current for 0.01 second. Fuses also meet cold load pickup criteria of 6 times transformer full load current for 1 second and 3 times full load current of 10 seconds.

Table 8. Replacement Fused Loadbreak Elbow Connector

Conductor Size				
Concentric or Compressed		Compact or Solid		Catalog Number
AWG	mm ²	AWG	mm ²	
		#2	35	FECC2C03T
#2	35	#1	–	FECC2C04T
#1	–	1/0	50	FECC2C05T
1/0	50	2/0	70	FECC2C06T
2/0	70	3/0	–	FECC2C07T
3/0	–	4/0	95	FECC2C08T
4/0	95	–	–	FECC2C09T
250*	120	–	–	FECC2C10T

* Compressed stranding only.

Note: Coppertop compression connector may be used on both aluminum and copper cable conductors.

Table 9. Replacement Parts

Description	Catalog Number
Loadbreak Probe Installation Tool	2602733A01
Probe Kit (includes Probe, Installation Tool, Silicone Lubricant, Installation Instruction Sheet)	PK225
Probe Adapter Kit (Includes Adapter, (2) Set Screws and 1/8" Hex Wrench)	FEADPT
Fuse Replacement Wrench Kit (includes Probe Adapter, (2) Set Screws, 1/8" Hex Wrench, (2) 3/16" Hex Wrenches, (2) Probe Installation Tools)	FEWKIT
Silicone Grease 0.175 oz tube (5 grams)	2603393A03
5.3 oz tube (150 grams)	2605670A02M
Test Point Cap	2639992A01

Eaton
1000 Eaton Boulevard
Cleveland, OH 44122
United States
Eaton.com

Eaton's Cooper Power Systems Division
2300 Badger Drive
Waukesha, WI 53188
United States
Eaton.com/cooperpowerseries

© 2016 Eaton
All Rights Reserved
Printed in USA
Publication No. CA650071EN

Eaton is a registered trademark.
All other trademarks are property
of their respective owners.

For Eaton's Cooper Power series product
information call 1-877-277-4636 or visit:
www.eaton.com/cooperpowerseries.