



APPENDIX I

Figure 37a and 37b Schematic Diagram of Form 2 ..14, 15
Figure 38a and 38b Schematic Diagram of Form 3
and RE/WE Recloser16, 17
Figure 39a and 39b Schematic Diagram of form 3
and Motor Operated Recloser.....18, 19
Figure 40a and 40b Schematic Diagram of Form 3A
and RE/WE Recloser20, 21
Figure 41a and 41b Schematic Diagram of Form 3A
and Motor Operated Recloser.....22, 23

This manual S280-75-46 has three parts:

S280-75-46Apages 1 - 12

S280-75-46Bpages 13 - 19

S280-75-46Cpages 20 - 24

For the complete manual (pages 1 - 12) refer to S280-75-46A, (pages 13 - 19) refer to S280-75-46B.

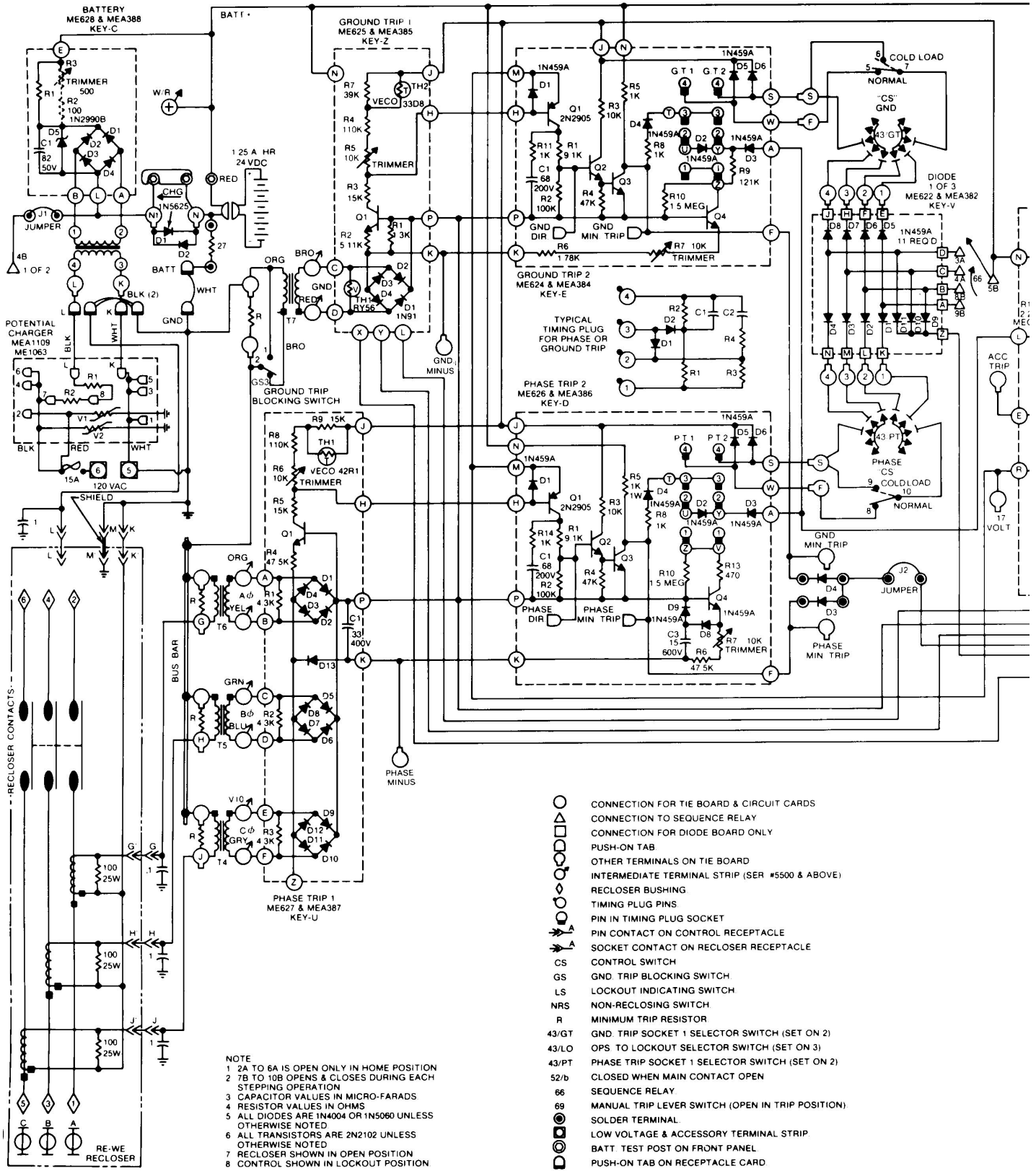
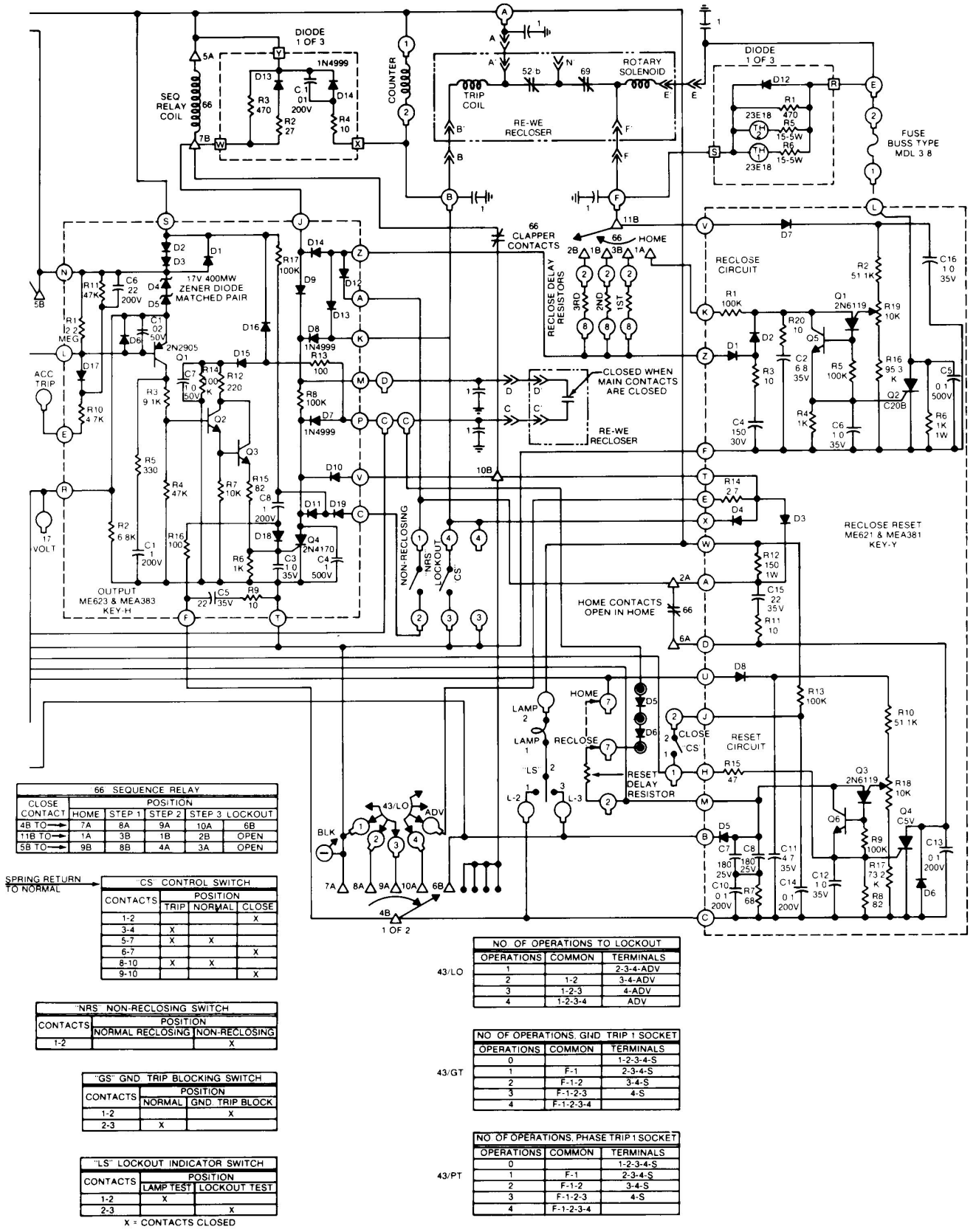


Figure 40a. Schematic diagram of Form 3A and RE/WE recloser (page 1 of 2).



CLOSE CONTACT	HOME	STEP 1	STEP 2	STEP 3	LOCKOUT
4B TO →	7A	8A	9A	10A	6B
11B TO →	1A	3B	1B	2B	OPEN
5B TO →	9B	8B	4A	3A	OPEN

CONTACTS	POSITION		
	TRIP	NORMAL	CLOSE
1-2			X
3-4	X		
5-7	X	X	
8-10	X	X	X
9-10			X

CONTACTS	POSITION	
	NORMAL RECLOSING	NON-RECLOSING
1-2		X

CONTACTS	POSITION	
	NORMAL GND TRIP BLOCK	
1-2		X
2-3	X	

CONTACTS	POSITION	
	LAMP TEST	LOCKOUT TEST
1-2	X	
2-3		X

X = CONTACTS CLOSED

OPERATIONS	COMMON	TERMINALS
1		2-3-4-ADV
2	1-2	3-4-ADV
3	1-2-3	4-ADV
4	1-2-3-4	ADV

OPERATIONS	COMMON	TERMINALS
0		1-2-3-4-S
1	F-1	2-3-4-S
2	F-1-2	3-4-S
3	F-1-2-3	4-S
4	F-1-2-3-4	

OPERATIONS	COMMON	TERMINALS
0		1-2-3-4-S
1	F-1	2-3-4-S
2	F-1-2	3-4-S
3	F-1-2-3	4-S
4	F-1-2-3-4	

Figure 40b. Schematic diagram of Form 3A and RE/WE recloser (page 2 of 2).

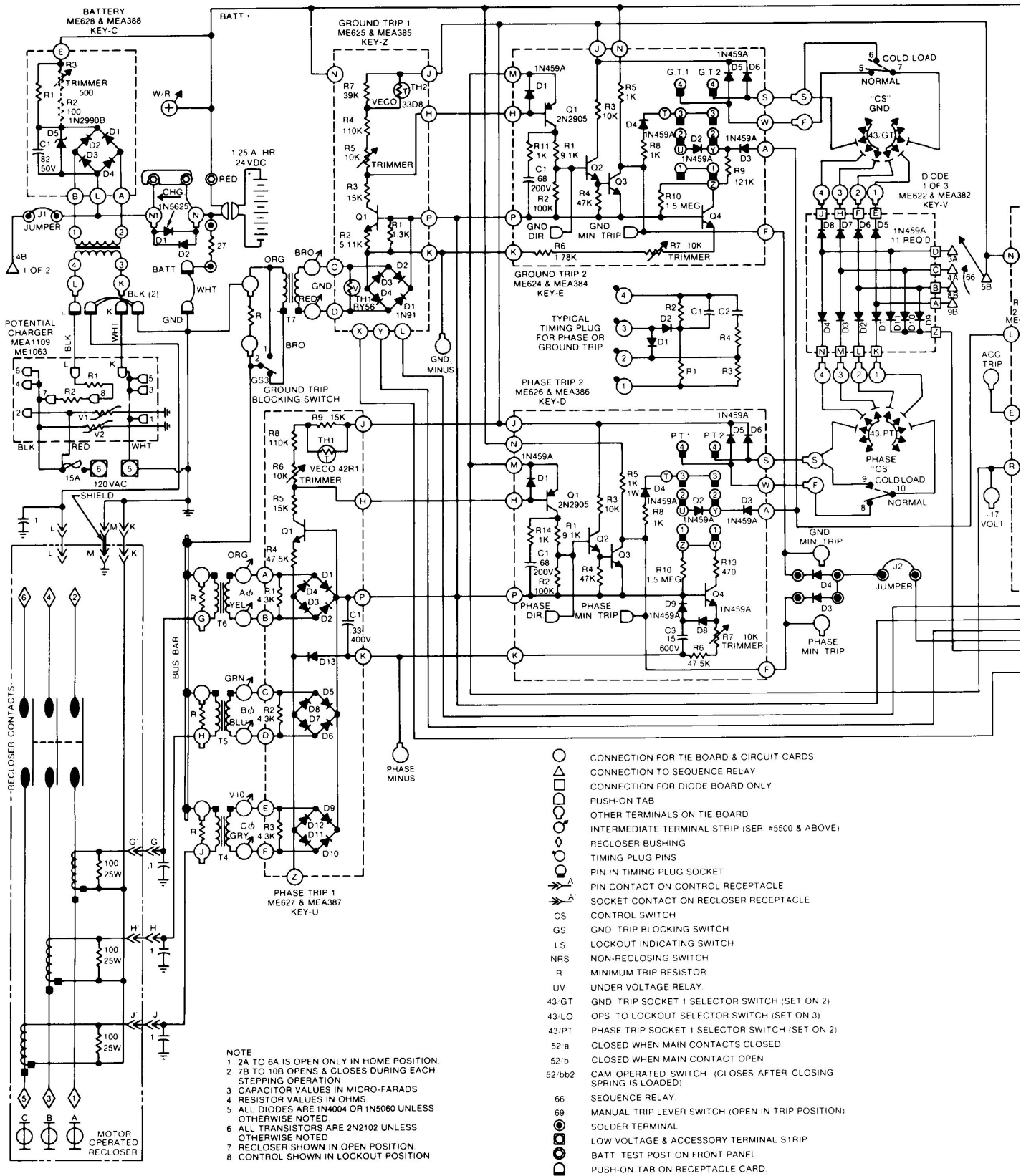


Figure 41a. Schematic diagram of Form 3A and motor operated recloser (page 1 of 2).

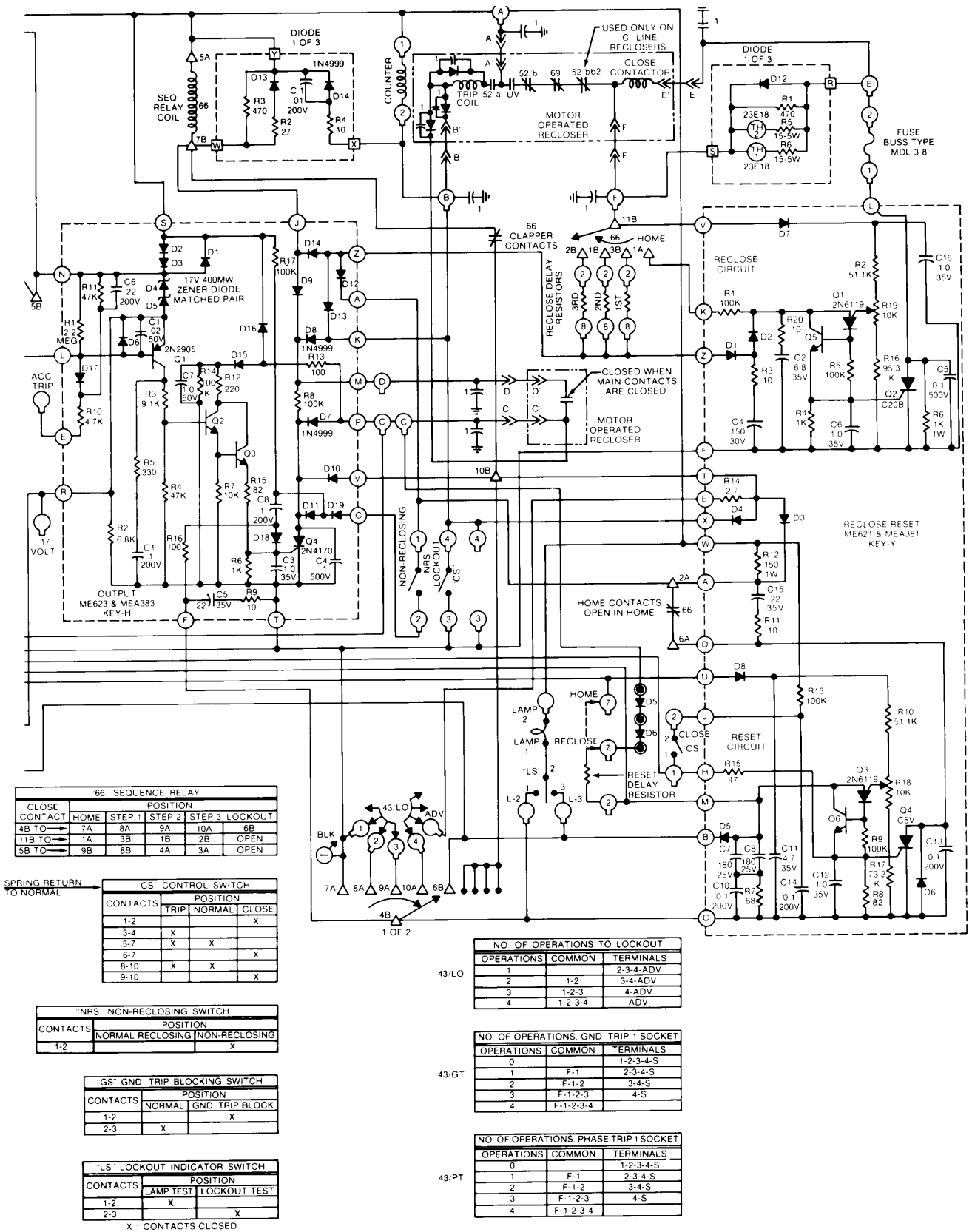


Figure 41b. Schematic diagram of Form 3A and motor operated recloser (page 2 of 2).

APPENDIX II
Accessory Manuals

Table 1
Form 2, 3 and 3A Type Electronic Control accessory manuals containing schematic diagrams.

Service Information Number	Form 2, 3, 3A	Accessory Catalog No.	Accessory Description
S280-75-4	3, 3A	KA316ME4	Remote-Close
S280-75-5	2, 3	KA304ME	Reset-After-Reclose
S280-75-14	2, 3, 3A	KA333ME	Reclose-Blocking
S280-75-15	2, 3	KA1009ME, KA1010ME, KA1011ME KA1012ME KA418ME	Low Ground Fault Tripping
S280-75-17	2	KA418ME	Sequence Coordination
S280-75-19	2, 3, 3A	KA287ME	Surge Protection
S280-75-20	2, 3	KA542ME	Thermostatically Controlled Heater
S280-75-21	3, 3A	KA1002ME	Minimum-Trip Doubler
S280-75-22	2, 3	KA531ME	Fuse-Elimination
S280-75-23	2, 3	KA472ME	Lockout Indicating
S280-75-25	3, 3A	KA1037ME	Instantaneous Trip
S280-75-26	2, 3	KA458ME	Battery-Charging
S280-75-31	3, 3A	KA1004ME	Remote Trip
S280-75-32	2, 3	KA880ME	DC Voltage Supply
S280-75-33	3, 3A	KA1036ME	Instantaneous Lockout
S280-75-34	3	KA418ME	Sequence Coordination
S280-75-36	3 3A	KA333ME	Reclose-Blocking
S280-75-37	3A	KA418ME5	Sequence Coordination
S280-75-38	3, 3A	KA639ME3	Remote Lockout
S280-75-39	3A	KA542ME	Thermostatically Controlled Heater
S280-75-40	3A	KA880ME	DC Voltage Supply
S280-75-41	3, 3A	KA1137ME	Target Annunciator
S280-75-42	3, 3A	KA1163ME	Minimum Response Time
S280-75-43	3 3A	KA109ME, KA1010ME, KA1011 ME KA1012ME	Low Ground Fault Tripping
S280-75-44	3, 3A	KA531ME	Fuse Elimination
S280-75-45	3A	KA1174ME	Temperature Regulated Battery Charger
S280-75-47	3A	KA418ME6, KA418ME7	Sequence Coordination
S280-75-48	3A	KA1119ME, KA 1122M E	Capacitor Backup Trip
S280-75-49	3, 3A	KA2003ME	Remote Close With Cold Load Pickup
S280-75-50	3, 3A	KA545ME3	Load Current Indicator

