

Fusing Equipment

Service Information

Type S1 Expulsion Fuse Cutout Assembly Instructions

S240-20-11

GENERAL

The Cooper Power Systems Type S1 cutout mounted on a station post insulator shall be assembled according to the reference drawing Figure 1 and component identification in Table 1.



CAUTION: The S1 cutout should be assembled only by personnel familiar with good safety practices and the handling of high voltage electrical equipment.

TABLE 1
Component Description of S1 Cutout Mounted on a Station Post Insulator

Item No.	Quantity	Description
1	1	Cutout and Fuseholder Assembly
2	1	Insulator
3	1	1/2"-13 x 1.5" Lg. (12.7 mm-d x 38 mm) HxHd Mach. Bolt
4	1	1/2"-13 (12.7 mm-d) HxHd Nut
5	1	1/2" (12.7 mm) Int-Ext Tooth L. Wshr
6	7	1/2" (12.7 mm) Split Lock Washer
6a	1	See Item 6
6b	2	See Item 6
6c	4	See Item 6
7	3	1/2"-13 x 1" Lg. (12.7 mm-d x 25.4 mm) HxHd Mach. Bolt
7a	2	See Item 7
7b	1	See Item 7
8	3	1/2"-13 x 1.25" Lg. (12.7 mm-d x 31.8 mm) HxHd Mach. Bolt
8a	1	See Item 8
8b	2	See Item 8

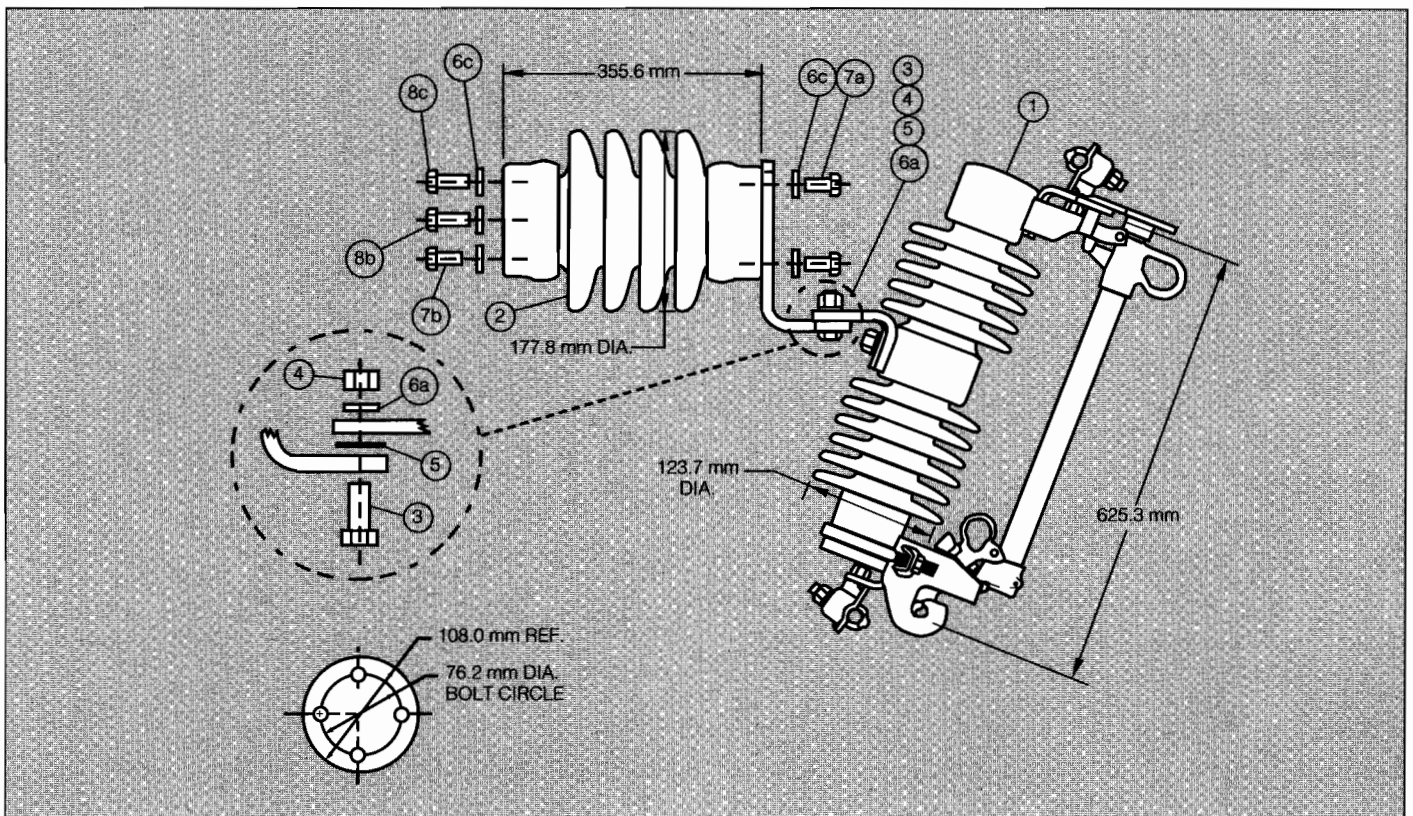


Figure 1.
Assembly of Type S1 cutout mounted on a station post insulator.

These instructions do not claim to cover all details or variations in the equipment, procedure, or process described, nor to provide directions for meeting every contingency during installation, operation, or maintenance. When additional information is desired to satisfy a problem not covered sufficiently for the user's purpose, please contact your Cooper Power Systems sales engineer.

