

Energy transition switches



Description

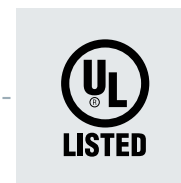
Eaton's Energy Transition switches are rated for bidirectional flow of power as well as for increased AC voltages required with higher-rated inverters. Additionally, their heavy-duty safety switch design protects people, property and investment, and their proven reliability can meet your current and future energy transition needs.

Standard features

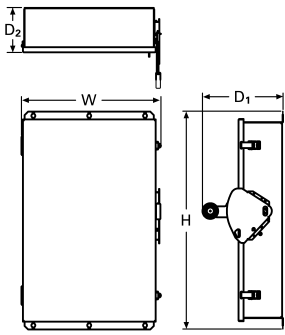
- UL listed for reverse power flow
- Enhanced visible blade (viewing window optional)
- Load break rated
- Visible ON/OFF indication
- Padlockable in the OFF position
- 800 VAC and 1000 VAC

Options/accessories

- Viewing window with visible blade compliant with EUSERC requirements
- Lock-on provision
- Additional grounding
- Custom painted enclosures
- Voltage indicators
- Auxiliary contacts
- Neutral



Product dimensions in inches (mm)



Ampere rating	Width	Height	Depth (D1)	Depth (D2)	Weight Lbs (kg)
NEMA 12/3R					
200	16.95 (430.5)	35.38 (898.7)	11.63 (295.4)	6.44 (163.6)	46 (20.884)
400	24.12 (612.6)	57.47 (1459.7)	12.43 (320.8)	7.19 (182.6)	110 (49.94)
NEMA 4X Stainless Steel					
200	16.95 (430.5)	35.38 (898.7)	11.63 (295.4)	6.44 (163.6)	55 (24.97)
400	24.12 (612.6)	57.47 (1459.7)	12.43 (320.8)	7.19 (182.6)	125 (56.75)

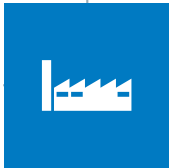
Product specifications

Catalog Number	Ampere rating	Protection	NEMA rating	SCCR Rating	Lug capacity (1)	Wire Type
800VAC, 3-Pole, Enhanced Visible Blade						
DH384UDKV	200 A	Non-Fusible	12/3R	10 kA	#6 - 300 kcmil	CU/AL
DH384UWKV	200 A	Non-Fusible	4X (2)	10 kA		
DH385UDKV	400 A	Non-Fusible	12/3R	10 kA	(3) 1/0 - (3) 300 kcmil or (2) 1/0 - (2) 750 kcmil	
DH385UWKV	400 A	Non-Fusible	4X (2)	10 kA		
800VAC, 3-Pole, Enhanced Visible Blade						
DH384UDKV-00NH (3)	200 A	Non-Fusible	12/3R	65 kA	#6 - 300 kcmil	CU/AL
DH384UWKV-00NH (3)	200 A	Non-Fusible	4X (2)	65 kA		
DH385UDKV-00NH (3)	400 A	Non-Fusible	12/3R	65 kA	(3) 1/0 - (3) 300 kcmil or (2) 1/0 - (2) 750 kcmil	
DH385UWKV-00NH (3)	400 A	Non-Fusible	4X (2)	65 kA		
1000 VAC, 3-Pole, Enhanced Visible Blade						
DH314UDKV	200 A	Non-Fusible	12/3R	10 kA	#6 - 300 kcmil	CU/AL
DH314UWKV	200 A	Non-Fusible	4X (2)	10 kA		
DH315UDKV	400 A	Non-Fusible	12/3R	10 kA	(3) 1/0 - (3) 300 kcmil or (2) 1/0 - (2) 750 kcmil	
DH315UWKV	400 A	Non-Fusible	4X (2)	10 kA		

(1) For applications that require multiple lugs contact the Flex Center (FlexSwitches@eaton.com, or call 888-329-9272)

(2) Stainless steel, 304 (316 available via the Flex Center)

(3) UL Recognized when applied with upstream Eaton Bussmann NH fuse



Eaton
1000 Eaton Boulevard
Cleveland, OH 44122
United States
Eaton.com

EATON
Powering Business Worldwide

© 2022 Eaton
All Rights Reserved
BR016003EN/wB
July 2022

Eaton is a registered trademark.
All other trademarks are property
of their respective owners.

Follow us on social media to get the
latest product and support information.

