

Power Xpert Multi-Point metering

Power Xpert  
Multi-Point  
metering helps  
commercial, industrial,  
institutional customers  
accurately capture and  
allocate energy costs

**EATON**

*Powering Business Worldwide*

**BUILDINGS**  
MONEY-SAVING  
PRODUCTS  
WINNER

CONSULTING - SPECIFYING  
**engineer**  
2014  
**PRODUCT**  
OF THE YEAR  
FINALIST

2013  
Plant Engineering  
**PRODUCT**  
of the YEAR  
Silver Award

The new Eaton Power Xpert® Multi-Point Meter allows facility managers to track and accurately allocate energy usage among tenants or departments within commercial, industrial and institutional facilities. Designed to support accurate and reliable energy monitoring, Eaton Power Xpert Multi-Point Meters capture, quantify and help to benchmark energy usage in a wide range of applications.



### Real-time energy information

With robust commissioning tools to support accurate installation and reliable operation, the Power Xpert Multi-Point Meter is engineered for new and retrofit applications. Power Xpert Multi-Point Meter provides real-time energy information so that facility managers and building owners can provide dependable energy data to tenants and departments and accurately allocate associated costs.

The Power Xpert Multi-Point Meter can monitor energy consumption as well as gas, water and steam to manage facilities' entire utility footprint. With accurate energy information, facility managers can have the data needed to make intelligent energy savings decisions.

The Eaton Power Xpert Multi-Point Meters provide a cost-effective, scalable approach to meter energy in assemblies or power distribution equipment with a high density of metering points. The meter includes patent-pending technology for efficient commissioning and accurate wiring. A single device can handle up to 20 three-phase or 60 single-phase circuits and is compatible with most three-phase industrial, commercial and single-phase residential low voltage electrical power systems.

### Integrated metering

Integrated with panelboards, switchboards or enclosures, the Power Xpert Multi-Point Meter proves that integrated metering saves space and reduces installation and commissioning time. With visual indicators on the metering hardware and software, the Power Xpert Multi-Point Meter simplifies installation, troubleshooting and maintenance operations for improved uptime.

With built-in communications capabilities, Power Xpert Multi-Point Meters enable remote meter reading and monitoring, which can be integrated into new and retrofit applications. Power Xpert Multi-Point Meters can be used with Ethernet networks and modems and are equipped with serial-based Modbus® and have optional Ethernet-based industrial, HVAC and data center communications.

### Features

- Scalable submetering
- Designed to facilitate commissioning and troubleshooting with visual indicators that simplify installation, wiring and maintenance
- Integrated energy allocation application
- Cost-effective way to meter energy in assemblies or distribution equipment with a high density of metering points
- A single device can handle up to 20 three-phase circuits
- Web-enabled access to energy information
- Integrated monitoring that enables facility managers to track tenants' energy usage
- Monitor gas, water, steam and utilities to manage your entire energy footprint
- Remote monitoring means that frequent equipment checks are a thing of the past

### Options and accessories

- Pulse input module
- Digital output module
- Energy portal module
- Wide range of current sensors
- Touch screen display

Eaton understands how important effective energy management is. At Eaton, our expertise, impactful solutions and customer-focused approach enable us to develop innovative solutions for what matters most to you. Eaton advanced power and energy meters provide accurate real-time information to support reliable and efficient operations.



Color touch screen display for viewing system and tenant metering values.



Current sensors are connected to the meter. This will eliminate timely installation cost.



The current sensors are mounted on brackets in-line with the tenant breaker. Cable installation is made easy!

**Eaton's Power Xpert Multi-Point Meters capture, quantify and help to benchmark energy usage in office buildings, shopping malls, industrial sites, universities and campuses, and apartment and condominium complexes.**

**Applications**

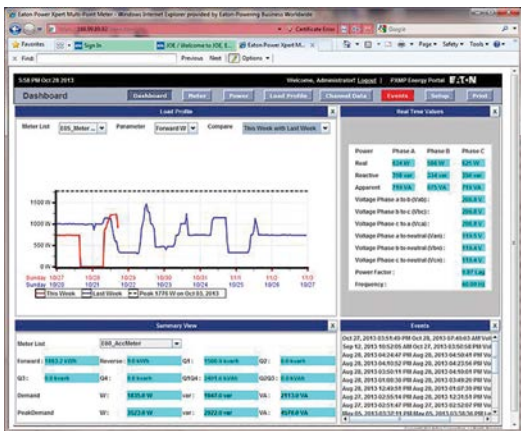
Applications	Value Props
Data centers	<ul style="list-style-type: none"> <li>• Monitor computer equipment and supporting systems to allocate energy usage</li> <li>• Monitor capacity to maintain uptime</li> <li>• Monitor increases in energy usage on equipment to alert to maintenance needs and prevent downtime</li> </ul>
High-rise residential/condominiums	<ul style="list-style-type: none"> <li>• Recover utility charges</li> <li>• Increase tenant retention through fair utility allocation</li> <li>• Increase rental attractiveness</li> <li>• Promote resource conservation</li> <li>• Monitor common areas for accurate allocation</li> </ul>
Property management/office buildings/shopping malls	<ul style="list-style-type: none"> <li>• Fair allocation of energy costs</li> <li>• Increased tenant satisfaction</li> <li>• Recover all tenant energy costs</li> <li>• Monitor common area usage for allocation</li> <li>• Monitor after-hours usage for proper allocation</li> </ul>
Universities	<ul style="list-style-type: none"> <li>• Recover utility charges for apartments on campus</li> <li>• Track dorm usage</li> <li>• Promote energy conservation</li> <li>• Departmental allocation</li> <li>• Identify potential maintenance items</li> <li>• Recover energy costs from event sponsors</li> <li>• Recover energy costs from leased spaces</li> </ul>

**Built-in communications capabilities**

Power Xpert Multi-Point Meters enable remote meter reading and monitoring. Power Xpert Multi-Point Meters can be used with Ethernet networks and modems and are equipped with serial-based Modbus, and have optional Ethernet-based industrial, HVAC and data center communications. The optional Energy Portal Module also incorporates a built-in Web server for remote access via Internet Explorer to view live data and graphical trending displays without the need to purchase additional software.

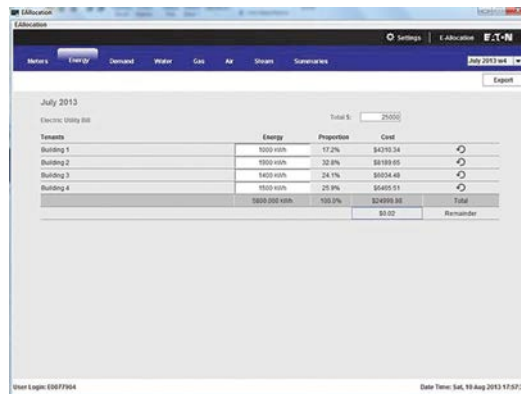
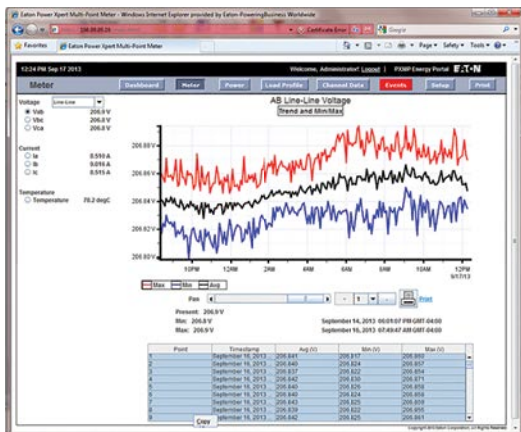
**Optional Energy Portal Module with built-in Web server**

Shown in the following image is an example of a tenant meter "Dashboard" view, which displays the load trend of "This week versus last week." Also included is a "Summary" table of energy values and live energy and voltage values per phase. Programmed "Events" are listed in the lower right section.



E-Allocation Software is a free software suite used with the PXMP Energy Portal Module. This software resides on a PC and provides remote access to the PXMP. E-Allocation allows the customer to accurately see which meters (tenants/departments) are using what percentage of the energy consumed. A total assigned cost is then entered, and based on the usage proportion, individual tenants' costs are assigned.

Trended/graphed phase "Voltages," phase "Currents" and "Power Factor" are also available for individual and system meters. Graphed data points can also be cut/pasted by highlighting the data values.



Individual allocation costs for energy, water, gas and steam can be generated, and the E-Allocation software creates individual meter (tenant) reports.



*Powering Business Worldwide*

**Eaton**

1000 Eaton Boulevard  
Cleveland, OH 44122  
United States  
Eaton.com

© 2014 Eaton  
All Rights Reserved  
Printed in USA  
Publication No. PA150001EN / Z15176  
July 2014

Eaton is a registered trademark.

All other trademarks are property  
of their respective owners.

For additional  
information on  
Eaton power and  
energy meters, visit  
**[www.eaton.com/  
meters](http://www.eaton.com/meters)** or call  
**1-877-ETN-CARE  
(877-386-2273)**  
with questions.