

Power Xpert Multi-Point meter

Real-time metering improves  
**power reliability**  
and **sustainability**

Our Power Xpert Multi-Point meter delivers efficient metering in high-density industrial or multi-tenant applications



**EATON**

*Powering Business Worldwide*

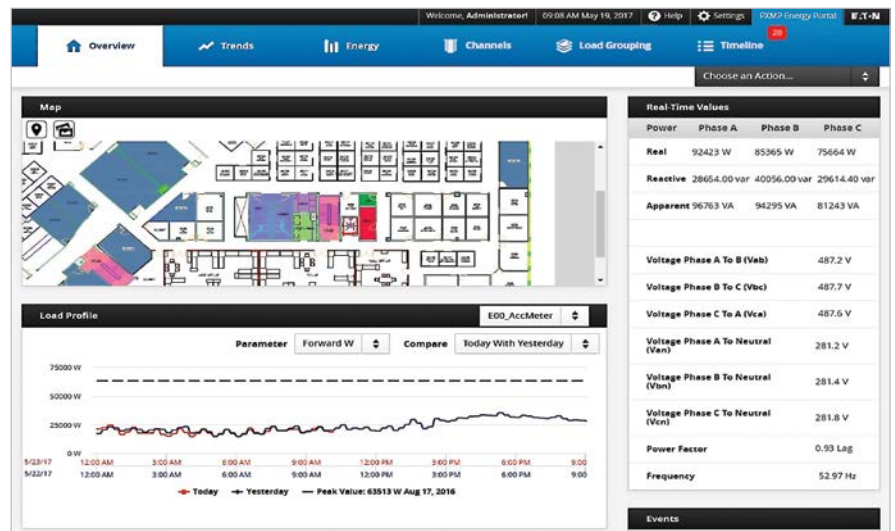
Eaton understands how important effective energy management is. At Eaton, our expertise, impactful solutions and customer-focused approach enable us to develop innovative solutions for what matters most. Eaton's high-density, multi-circuit meters provide accurate real-time information to support reliable and efficient operations.



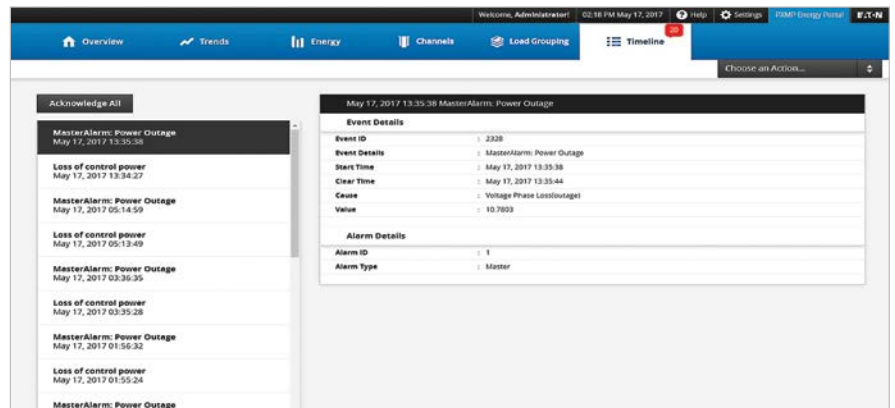
Eaton's Power Xpert® Multi-Point meter (PXMP) helps facility managers track and accurately allocate costs to tenants, and benchmark energy usage in buildings and residential applications. The PXMP is a space-saving solution with its accurate wiring patented technology, helping to reduce installation and commissioning time when integrated into panelboards, switchboards or stand-alone enclosures. Visual indicators on the hardware and software help simplify installation, troubleshooting and maintenance operations.

**PXMP is approved as a sub-billing meter by the state of California, for the California Type Evaluation Program (CTEP). In addition, the PXMP helps meet Local Law 88 when installing tenant sub-meters is required.**

# Increase your sustainability and accurately allocate costs for residential, commercial and institutional applications



View key parameters at a glance: real-time data, energy comparisons and summaries of virtual meters (customized groups of circuits).



Alerts notify building managers of events affecting their electrical distribution system.

## Being compliance-ready supports standard energy codes and reduces carbon footprint

The PXMP meter provides energy information and alerts so that building owners can perform maintenance and manage usage to help make intelligent, energy-saving decisions.

The integration of the energy portal module (EPM) helps meet energy code compliance standards in building applications, such as ASHRAE 90.1, California Title 24, and Local Law 97 with built-in load aggregation. Facility managers can designate virtual meter groups by load and associate a specific load type, making it easy to integrate into reporting and data aggregation systems.

With up to 4 GB of nonvolatile memory, the PXMP meter stores up to 10 years of energy profile data at 15-minute intervals, exceeding the requirements for most energy codes.

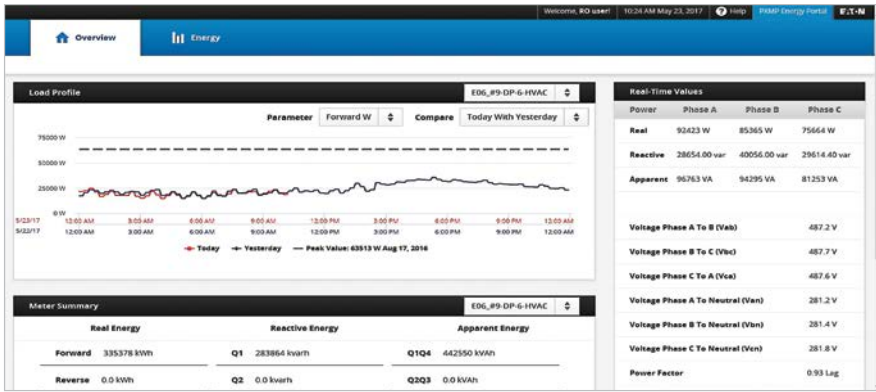
The screenshot displays the PXMP Energy Portal interface showing ASHRAE 90.1 Load Grouping and Meter Configuration tables.

ASHRAE 90.1 Load Grouping	Forward Energy (kWh)	Reverse Energy (kWh)	Modbus Register (Forward Energy)	Modbus Register (Reverse Energy)
Total	2620642	0	36221	36261
HVAC Systems	956532.2	0.1	36223	36263
Interior Lighting	229138.5	0	36225	36265
Exterior Lighting	159422.4	0	36227	36267
Receptacles	1279379	0	36229	36269

Meter Configuration	Load Type	Tenant Name	Extra Name	Forward Energy (kWh)	Reverse Energy (kWh)
E01_Meter 1	Exterior Lighting	Common	Common	159422.4	0
E02_Meter 2	HVAC Systems	Suite #100	Fir 1	579205.5	0.0
E03_Meter 3	Interior Lighting	Suite #100	Fir 1	143480.1	0
E04_Meter 4	Receptacles	Suite #100	Fir 1	760227.3	0
E05_Meter 5	HVAC Systems	Suite #102	Fir 1	382613.7	0.0
E04_Meter 6	Interior Lighting	Suite #102	Fir 1	95653.4	0
E05_Meter 7	Receptacles	Suite #102	Fir 1	510151.6	0

Aggregation by an upstream building management system or software solution is made simple when loads are summarized into designated categories.

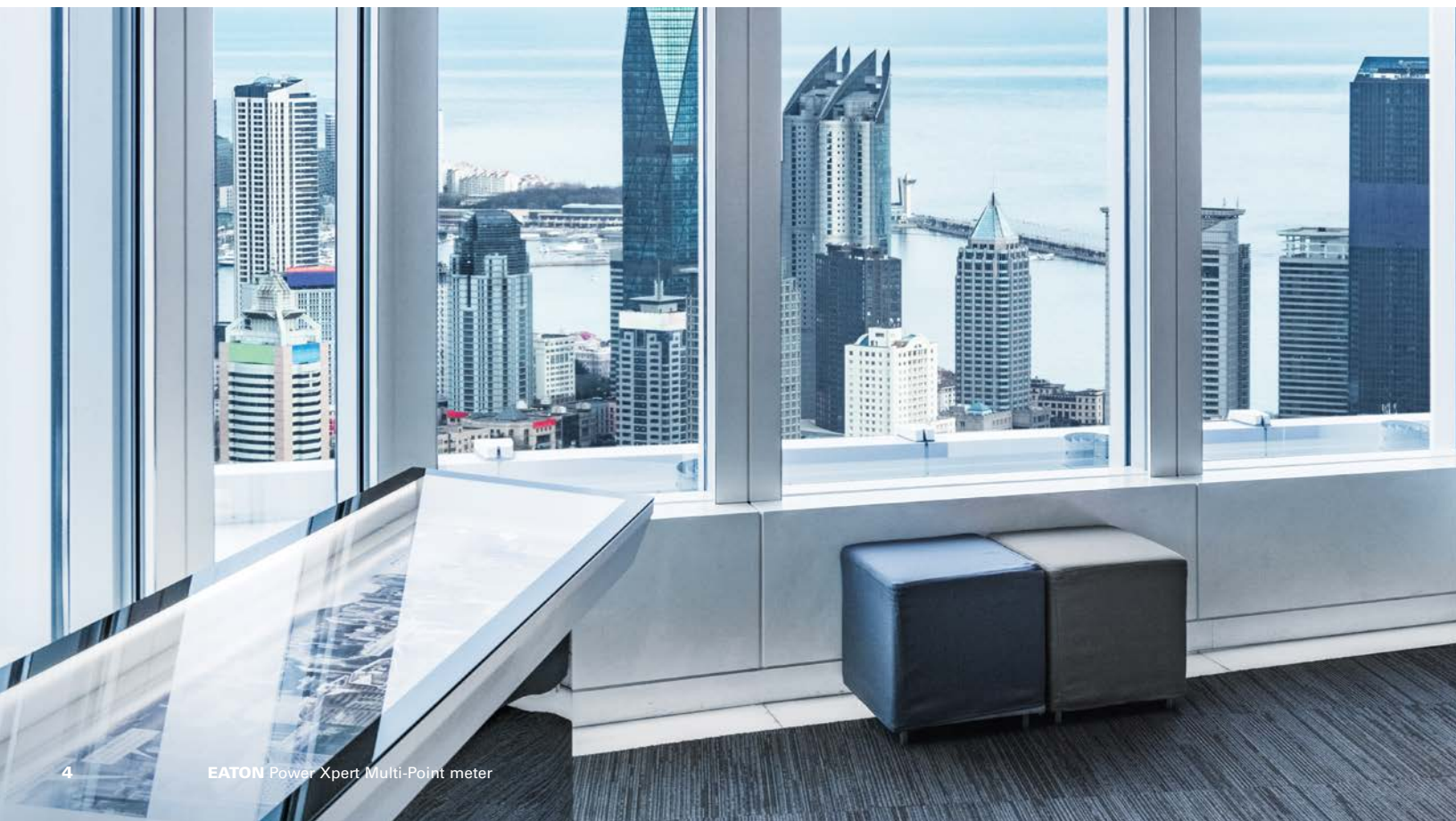


Password-protected login allows tenants to stay conscious of their own usage by comparing energy usage for two different days, weeks or months, enabling them to manage their own energy footprint.

### Tailored for tenant metering applications with the ability to support a facility's entire utility footprint

The PXMP is the ideal metering solution for residential sub-billing or commercial multi-tenant applications. In addition to measured currents, the PXMP meter can also support WAGES applications by monitoring water, air, gas, energy and steam usage via pulse metering.

The PXMP meter allows building owners and facility managers to allocate and recover energy costs to tenants or departments based on proportion of usage. Individual cost allocation reports can be generated for WAGES utilities as well as measured energy usage in common areas in addition to a tenant's specific usage. This provides the perfect accompaniment to a billing service. Password-protected access can be provided to tenants, allowing them to monitor their individual usage, in compliance with regulated applications.



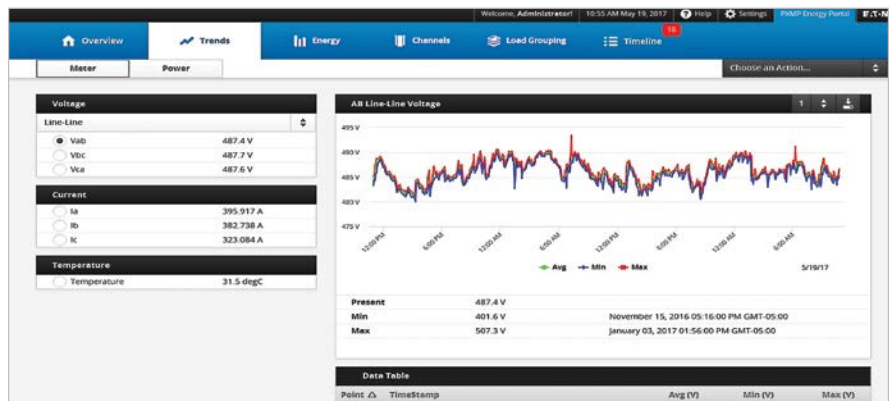
# Connectivity and visualization capabilities are vital for industrial, warehousing and data center applications



## PXMP can help benchmark multiple facilities to better optimize energy usage and circuit loading to efficiently manage and reduce costs

The ability to aggregate loads by process or department enables remote, browser-based access to view live data and interactive trends without the need to purchase additional software. PXMP meters are equipped with Modbus RTU serial communications and support a variety of remote meter reading and monitoring options. Ethernet-based industrial, HVAC and data center communications such as Modbus TCP and BACnet/IP can be added with the EPM, which enables integration into BMS and other monitoring systems.

The PXMP with EPM is ideal for industrial users as it makes user management easy. Choose between secured local access for a small team or connect to your organization's Active Directory server via LDAP to easily manage access to multiple PXMPs. Users can authenticate using their existing credentials to ensure compliance with organizational password and security policies.



Interactive plots of trended parameters, such as voltages, currents and power values, provide a historical view of the electrical distribution system.

# Simplified and reduced installation methods for OEMs



## Reduced installation costs and simplified installation

The PXMP helps OEMs reduce installation costs with pre-terminated connector cables and plug-in CTs with visual indicators that simplify installation, wiring and maintenance. A wide variety of current-sensing options make Eaton's PXMP a cost-effective, scalable approach when your customer needs to monitor energy in their power distribution equipment with a high density of metering points.



**Color touch screen display for viewing system and tenant metering values.**



**Current sensors are connected to the meter. This will eliminate timely installation cost.**



**The current sensors are mounted on brackets in-line with the tenant breaker. Cable installation made easy!**

### PXMP features and benefits

- Streamlined, space-efficient, scalable design provides metering customized to various industrial, commercial or residential applications
- The PXMP can measure up to the following number of circuits:
  - 60 circuits, configured as single-phase, two-wire (single-pole)
  - 30 circuits, configured as single-phase, three-wire (two-pole)
  - 20 circuits, configured as three-phase, four-wire (three-pole)
  - A combination of single-pole, two-pole and three-pole loads
- Energy portal module provides web interface for interactive display of relevant energy usage data and trends for facility managers and/or tenants
- Supports ASHRAE 90.1 compliance requirements
  - 4 GB of non-volatile memory, stores up to 10 years of energy profile data in 15-minute intervals
  - Virtual meters (customized groups of circuits) can be designated with ASHRAE specified load types for aggregation
- Meets rigid ANSI C12.20 accuracy specifications for revenue meters
- Designed to IEC 62443 4-1 secure development life-cycle (SDL) requirements
- IT ready for Active Directory connection with LDAP (Lightweight Directory Access Protocol)
- Can be directly mounted in a UL® Listed panelboard, switchboard or enclosure

# We make what matters work.\*

\* At Eaton, we believe that power is a fundamental part of just about everything people do. Technology, transportation, energy and infrastructure—these are things the world relies on every day. That's why Eaton is dedicated to helping our customers find new ways to manage electrical, hydraulic and mechanical power more efficiently, safely and sustainably. To improve people's lives, the communities where we live and work, and the planet our future generations depend upon. Because that's what really matters. And we're here to make sure it works.

See more at [Eaton.com/whatmatters](https://www.eaton.com/whatmatters)



Eaton **software solutions** such as Foreseer, Power Xpert Dashboard and Power Xpert Energy Visualization and Analytics are supported for additional on-premise or cloud-based monitoring capabilities across your residential, commercial or industrial applications. These solutions can help you meet your monitoring goals by providing additional reporting and benchmarking, whether your needs are multi-site, campus-wide or simply to aggregate multiple PXMPs in your system.

Visit [Eaton.com/pxmp](https://www.eaton.com/pxmp) for more information on our **energy-saving metering solution**.

**Eaton**  
1000 Eaton Boulevard  
Cleveland, OH 44122  
United States  
[Eaton.com](https://www.eaton.com)

© 2022 Eaton  
All Rights Reserved  
Printed in USA  
Publication No. BR150010EN / Z25737  
January 2022

Eaton is a registered trademark.

All other trademarks are property of their respective owners.

Follow us on social media to get the latest product and support information.

