

## Power Xpert Dashboard



# Power Xpert Dashboard release notes

The Power Xpert® Dashboard (PXD) portfolio is releasing new software versions with many new features and fixes

The Power Xpert Dashboard (PXDB) portfolio includes the PXDB, the Power Xpert Dashboard Lite (PXDBL) and the Power Xpert Dashboard Campus (PXDBC).

The Power Xpert Dashboard Processor (PXDBP) has been designed to be installed in low- and medium-voltage switchgear and low-voltage motor control centers, which is the engine that produces the Power Xpert Dashboard user interface. The user interface allows visualization and interaction with Eaton trip units, meters, relays, starters, drives, I/O and diagnostic devices.

The Power Xpert Dashboard Lite (PXDBL) has been designed to be installed in low-voltage panelboards and switchboards, which is the engine that produces the Power Xpert Dashboard Lite user interface. The user interface allows visualization and interaction with Eaton trip units and meters.

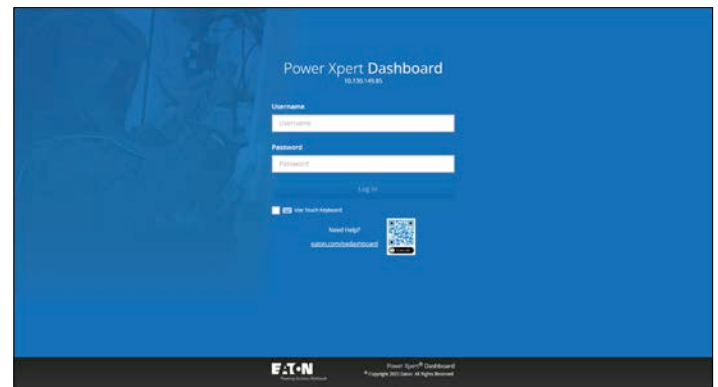
The Power Xpert Dashboard Campus (PXDBC) is designed to be self-contained in a centralized location to aggregate important operations information about downstream power distribution assemblies. Its design allows for it to be located outside of the electrical room with a few dashboards and up to a large facility or campus with many dashboards.

## PXDB portfolio notable updates

### Power Xpert Dashboard (Dashboard\_2021.12.1)

New feature additions:

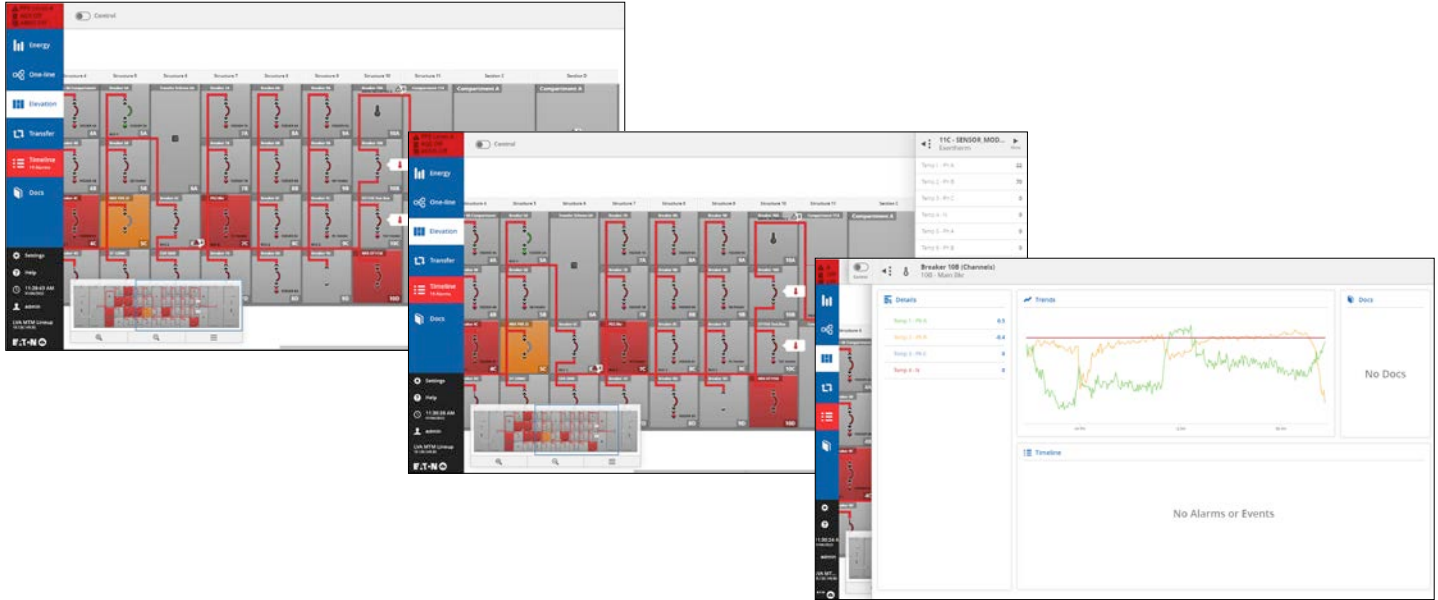
- Added QR code feature on login page that directs user to [Eaton.com/PXDashboard](https://Eaton.com/PXDashboard) webpage for more information, documents and support.



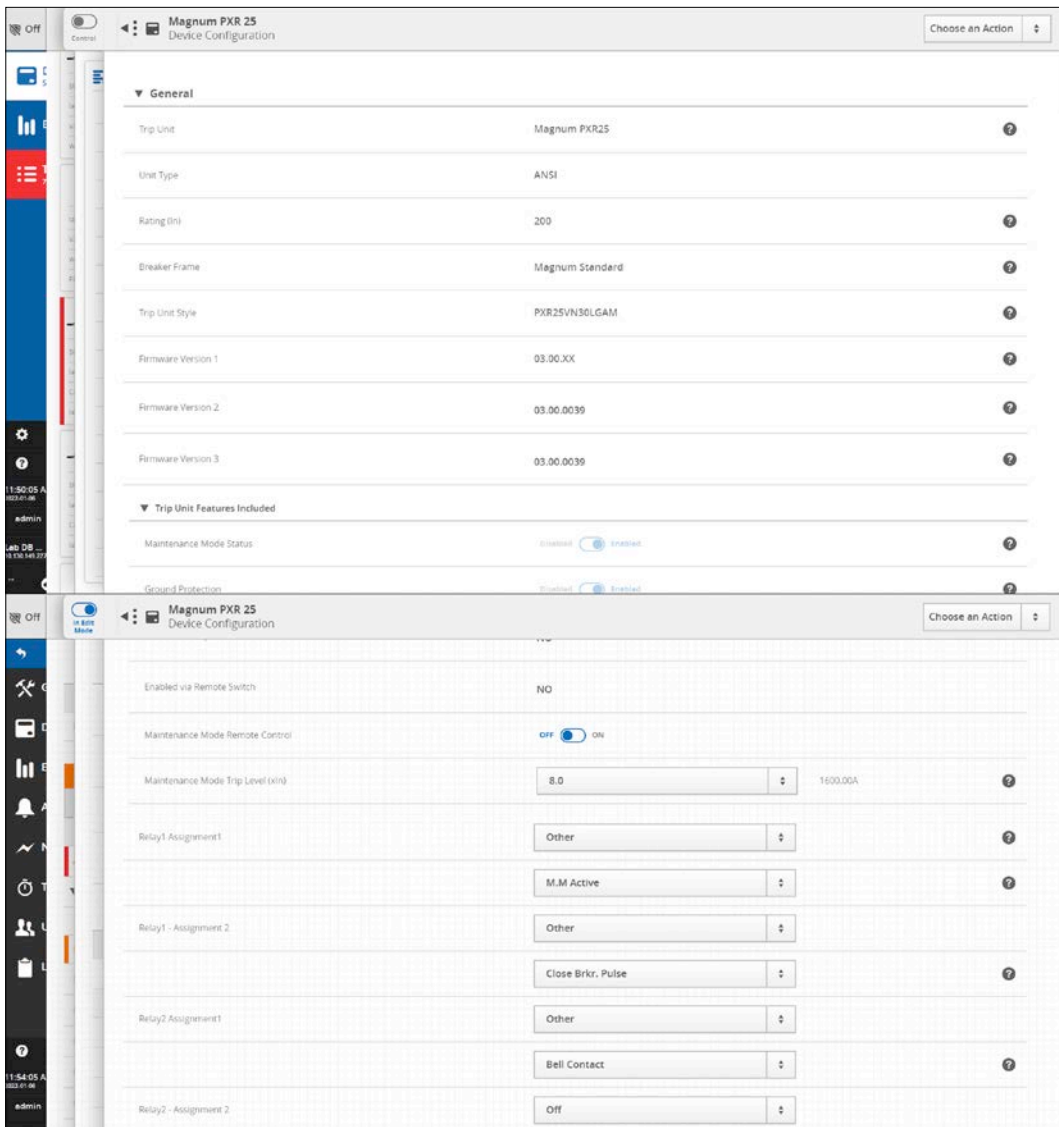
Powering Business Worldwide

**Power Xpert Dashboard (Dashboard\_2021.12.1) continued**

- To expand on Eaton's thermal monitoring capabilities, support to Exertherm Modbus® Datacard was added to the PXDB, allowing for more safety and knowledge of the equipment.

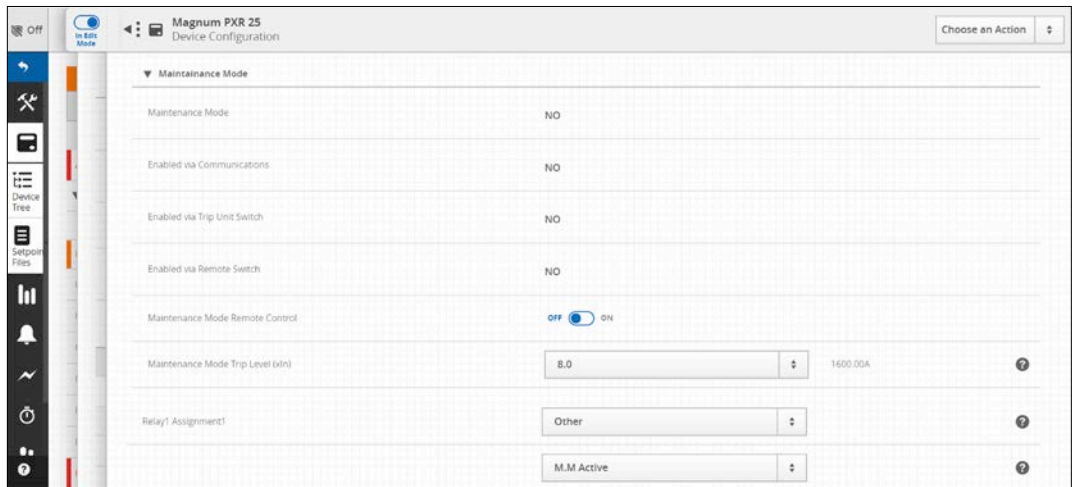


- Added support for PXR ACB Magnum 3.0, including setpoints, control commands and trip log support.



**Power Xpert Dashboard (Dashboard\_2021.12.1) continued**

- Added Maintenance mode setpoint requirement changes to allow customer to change Magnum devices with PXR trip units to view and change setpoint parameters using the PXDB. This will bring all devices' views and parameters to one location, saving the customer time when changes need to be made.



- Included remote racking capability for PXR 3.0 Magnum breakers.

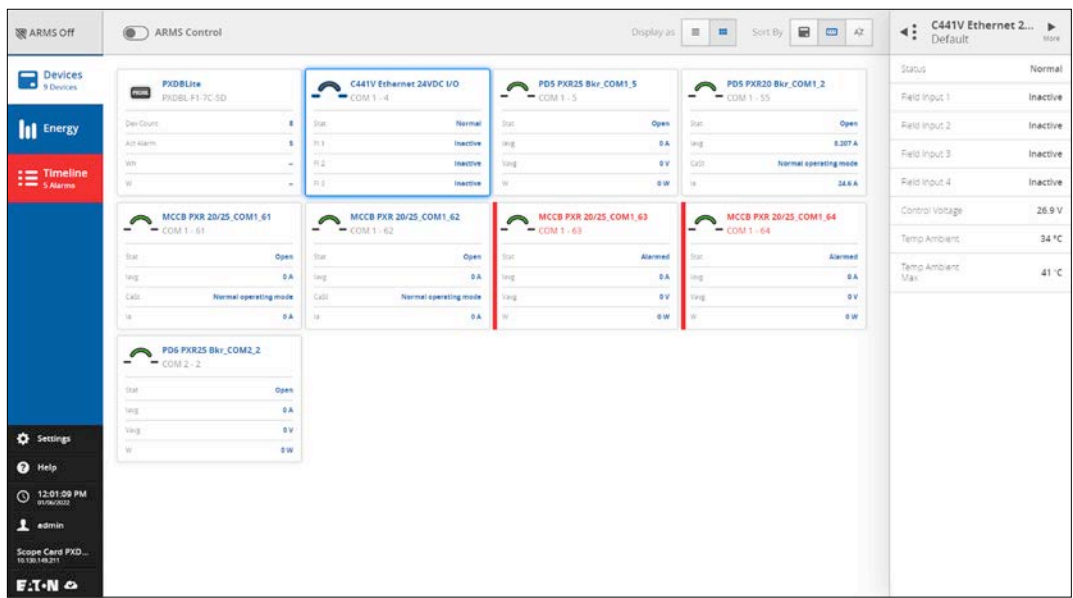
### Improvements and bug fixes

- Fixed default width issue for double-wide section
- Fixed wire name display issue on customer configuration
- Fixed issue related to orphan device addition

**Dashboard Lite (DBLITE\_2021.12.3)**

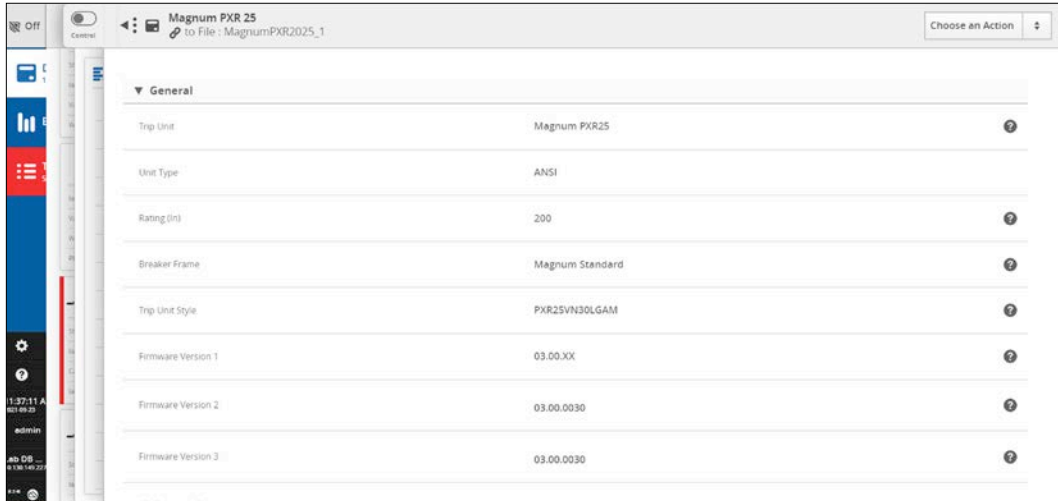
New feature additions:

- To expand input and output capabilities on the PXDBL, the C441U and C441V I/O module devices were added to the supported devices.

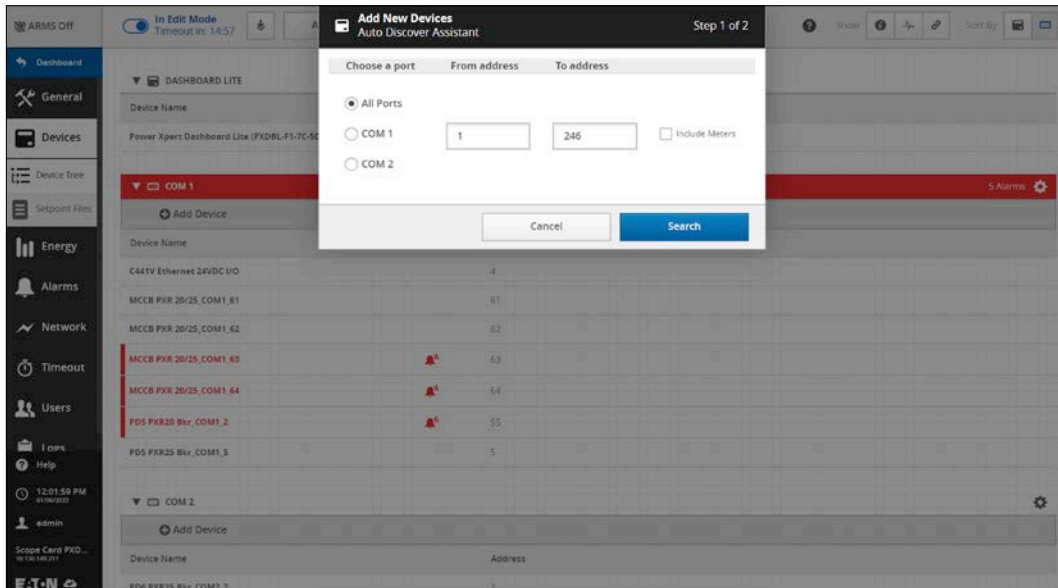


## Dashboard Lite (DBLITE\_2021.12.3) continued

- Added support to easily change setpoints for Magnum PXR 3.0 through the PXDBL web UI.



- Expanded support to auto discover Magnum PXR 3.0 trip unit on PXDL to enhance the commissioning experience and reduce time spend programming devices.



### Improvements and bug fixes

- Fixed issue with DBLite Arcflash Reduction Maintenance System™ status not reflecting on DBCampus
- Improved text on Access Point Unpair message