

## Power Xpert Dashboard



# Power Xpert Dashboard release notes

The Power Xpert® Dashboard (PXD) portfolio software version 2021.9.1 includes many new features and improvements

The Power Xpert Dashboard (PXDB) portfolio includes the Power Xpert Dashboard (PXDB), the Power Xpert Dashboard Lite (PXDBL) and the Power Xpert Dashboard Campus (PXDBC).

The Power Xpert Dashboard Processor (PXDBP) has been designed to be installed in low- and medium-voltage switchgear and low-voltage motor control centers, which produces the Power Xpert Dashboard user interface. The user interface allows visualization and interaction with Eaton trip units, meters, relays, starters, drives, I/O and diagnostic devices.

The PXDBL has been designed to be installed in low-voltage panelboards and switchboards, which produces the Power Xpert Dashboard Lite user interface. The user interface allows visualization and interaction with Eaton trip units and meters.

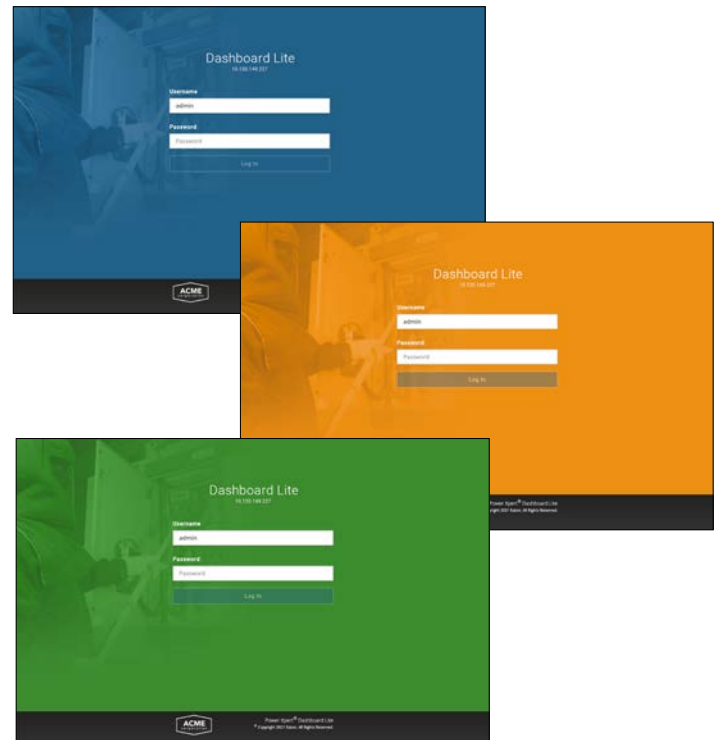
The PXDBC is designed to be self-contained in a centralized location to aggregate important operations information about downstream power distribution assemblies. Its design allows for it to be located outside of the electrical room with a few dashboards up to a large facility or campus with many dashboards.

## PXDBL software notable updates

### Dashboard Lite (DBLITE\_2021.9.1)

New feature additions:

- Added brand label licensing to customize PXDBLite UI color and logo. Specifically geared for EOEMs and MOEMs. This feature will allow EOEMs and MOEMs to cater to their end customers by providing software that will include the OEM's brand color and logo allowing for an integrated solution from the OEM.

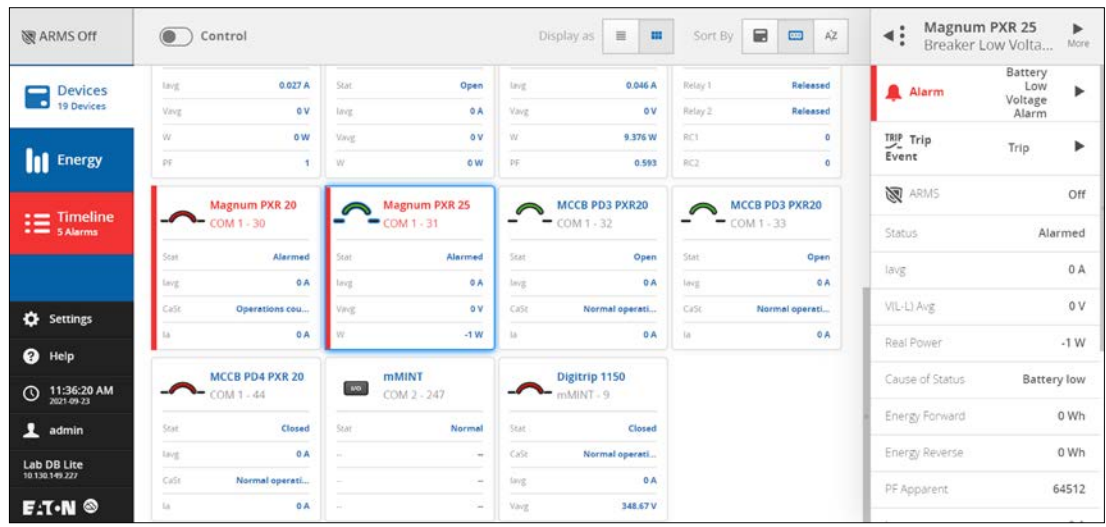


# EATON

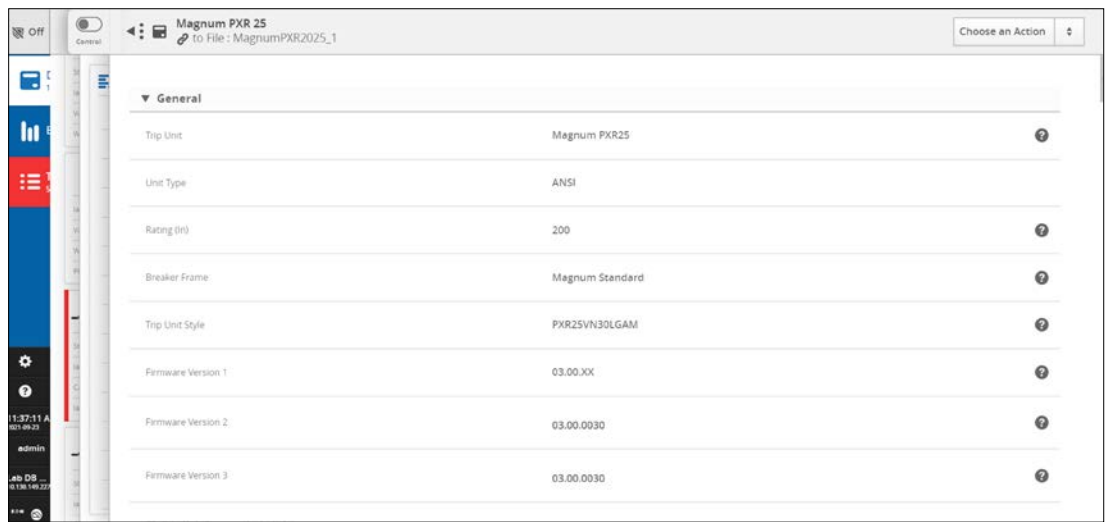
Powering Business Worldwide

**Dashboard Lite (DBLITE\_2021.9.1) continued**

- Added support for PXR ACB Magnum 3.0, including setpoints, control commands and trip log support.



- Added Maintenance mode setpoint requirement changes to allow customer to change Magnum devices with PXR trip units to view and change setpoint parameters using the Dashboard Lite. This will bring all devices' views and parameters to one location, saving the customer time when changes need to be made.



**Dashboard Lite (DBLITE\_2021.9.1) continued**

- Included unique “Arcflash Reduction Maintenance System Control” slider when only Arcflash Reduction Maintenance System license is installed to differentiate from control slider when control license is installed.

The screenshot shows the dashboard with 'ARMS On' and 'ARMS Control' (disabled) at the top. The left sidebar includes 'Devices' (9 Devices), 'Energy', 'Timeline' (3 Alarms), 'Settings', 'Help', and user information for 'admin'. The main area displays several device cards:

- PXDBLite** (FXDBL-F1-7C-5D): Dev Count: 8, Act Alarms: 3, Vrms: --, W: --.
- C441V Ethernet 24VDC I/O** (COM 1 - 4): Stat: Normal, R1: Inactive, R2: Inactive, R3: Inactive.
- PD5 PXR25 Bkr\_COM1\_5** (COM 1 - 5): Stat: Closed, Avg: 0 A, Vavg: 0 V, W: 0 W.
- PD5 PXR20 Bkr\_COM1\_2** (COM 1 - 55): Stat: Open, Avg: 8.207 A, Vavg: 0 V, W: 24.6 A.
- MCCB PXR 20/25\_COM1\_61** (COM 1 - 61): Stat: Open, Avg: 0 A, Vavg: 0 V, W: 0 W.
- MCCB PXR 20/25\_COM1\_62** (COM 1 - 62): Stat: Open, Avg: 0 A, Vavg: 0 V, W: 0 W.
- MCCB PXR 20/25\_COM1\_63** (COM 1 - 63): Stat: Alarmed, Avg: 0 A, Vavg: 0 V, W: 0 W.
- MCCB PXR 20/25\_COM1\_64** (COM 1 - 64): Stat: Open, Avg: 0 A, Vavg: 0 V, W: 0 W.
- PD6 PXR25 Bkr\_COM2\_2** (COM 2 - 2): Stat: Open, Avg: 0 A, Vavg: 0 V, W: 0 W.

The screenshot shows the dashboard with 'ARMS Off' and 'In ARMS Control Mode' (Timeout in: 14:54) at the top. The left sidebar is identical to the previous screenshot. The main area displays the same device cards, but the 'MCCB PXR 20/25\_COM1\_63' card is highlighted with a red border. On the right, a detailed alarm view is shown for 'MCCB PXR 20/25 COM1\_63 Breaker Low Voltage':

- Alarm**: Breaker Health remaining is lower than 25%
- Alarm**: Operations Count
- ARMS: Off
- Status: Alarmed
- Avg: 0 A
- V(L-L) Avg: 0 V
- Real Power: 0 W
- Cause of Status: Operations count
- Energy Forward: 0 Wh
- Energy Reverse: 0 Wh
- PF Apparent: 0

Buttons at the bottom right include 'View Alarm Details' and 'Enable ARMS'.

- Increased the number of devices available on the auto discovery function by including PXM 3000.

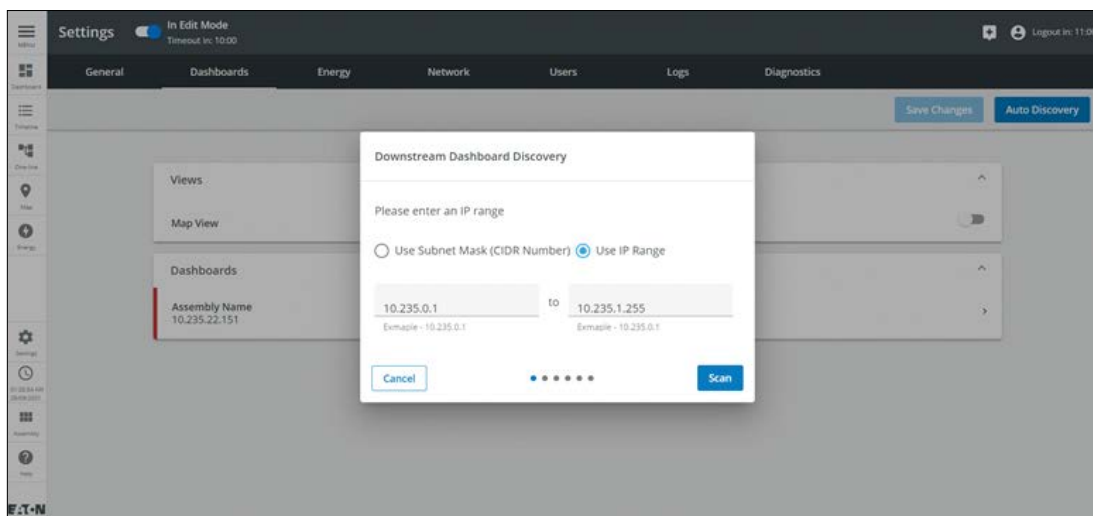
### Improvements and bug fixes

- DBLite Arcflash Reduction Maintenance System status indication now available on DBCampus
- Improved text on Access Point Unpair message

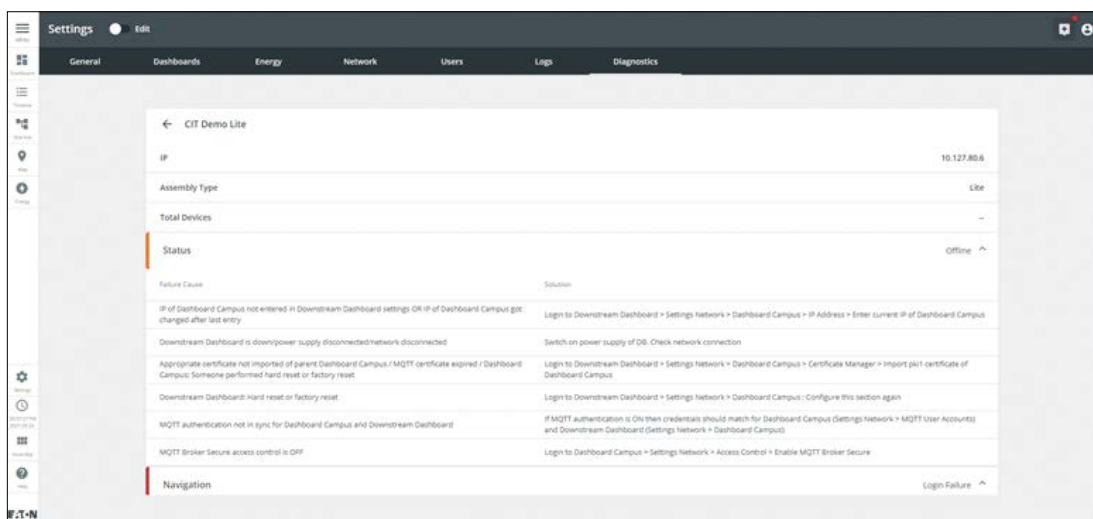
## Dashboard Campus (DBCampus\_2021.9.1)

New feature additions:

- To expand ease of use on Dashboard Campus, Auto-discovery support was added to enable the discovery of downstream dashboards within the same network.



- When a device stops communicating or has a communication issue, it is difficult to pinpoint the problem. Dashboard Campus now has a diagnostic capability for troubleshooting in case of communication or navigation failure to downstream dashboards.



### Improvements and bug fixes

- Improved Dashboard Assistance to generate report for HMI Support
- Improved Dashboard Assistance to provide user with three historical reports of Field Commissioning & HMI Support

**Eaton**  
1000 Eaton Boulevard  
Cleveland, OH 44122  
United States  
Eaton.com

© 2021 Eaton  
All Rights Reserved  
Printed in USA  
Publication No. SA013002EN / Z25564  
October 2021

Eaton is a registered trademark.

All other trademarks are property of their respective owners.

Follow us on social media to get the latest product and support information.

