

PXM4/6/8K meter color touchscreen display quick start guide

For detailed information concerning the operation and features available in the PXM4/6/8K meter display - 6" color touchscreen (PXM468K-DISP-6-XV), please refer to PXM4/6/8K meter color touchscreen display features (IB150021EN) available on the Eaton website (www.eaton.com/meters).



Figure 1. Color touchscreen display for PXM4/6/8K series meter.

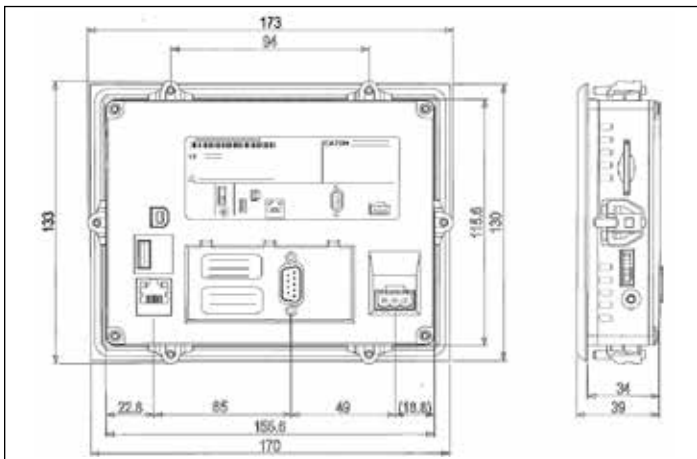


Figure 2. Dimensions of the PXM4/6/8K meter display - 6" color touchscreen (PXM468K-DISP-6-XV).

Installation

1. Disconnect and lockout all power to the enclosure.
2. Inspect the enclosure door to determine the best mounting location for the PXM4/6/8K meter color touchscreen display.

Note: A minimum clearance of 1.18 in. (30.0 mm) must be maintained between the ventilation holes in the back of the display and any other component within the enclosure.
3. Use the mounting template to mark the cutout area on the enclosure door. Cut out the marked area.

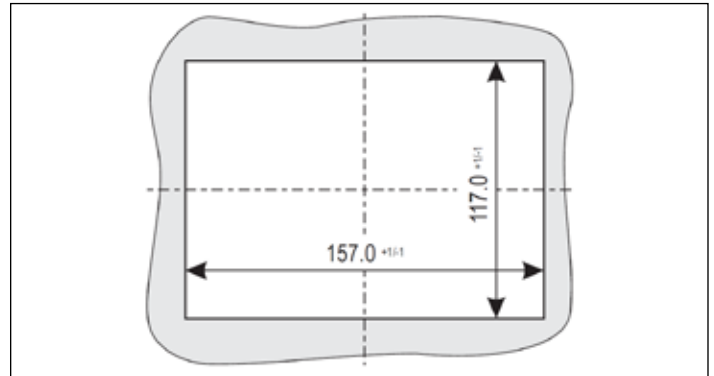


Figure 3. Cut out dimensions.

4. Ensure proper gasket placement on the PXM4/6/8K meter color touchscreen display.
5. Insert the PXM4/6/8K meter color touchscreen display through the cutout.
6. Fit the supplied threaded pins in the retaining brackets. The tips of the threaded pins must point towards the wider ends of the retaining brackets. Clip on the retaining brackets in the recesses provided for them on the device.

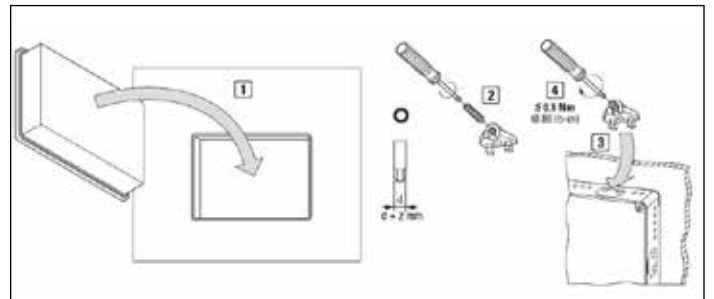


Figure 4. Mounting the PXM4/6/8K meter display.

7. Check for proper alignment of the PXM4/6/8K meter color touchscreen display. Then fix the device by torquing the threaded pins to 0.1 Nm (0.86 lb-in) with a 2 mm hexagonal screwdriver. The front of the display should be flush with the surface of the control cabinet at the fixing points.

Connections

To use the PXM4/6/8K meter color touchscreen display, provide 24 Vdc and connect the power cable between the color touchscreen display and the PXM4/6/8K meter.

The display's plug-in terminals provide connections for +24, GND and common (0).



Powering Business Worldwide

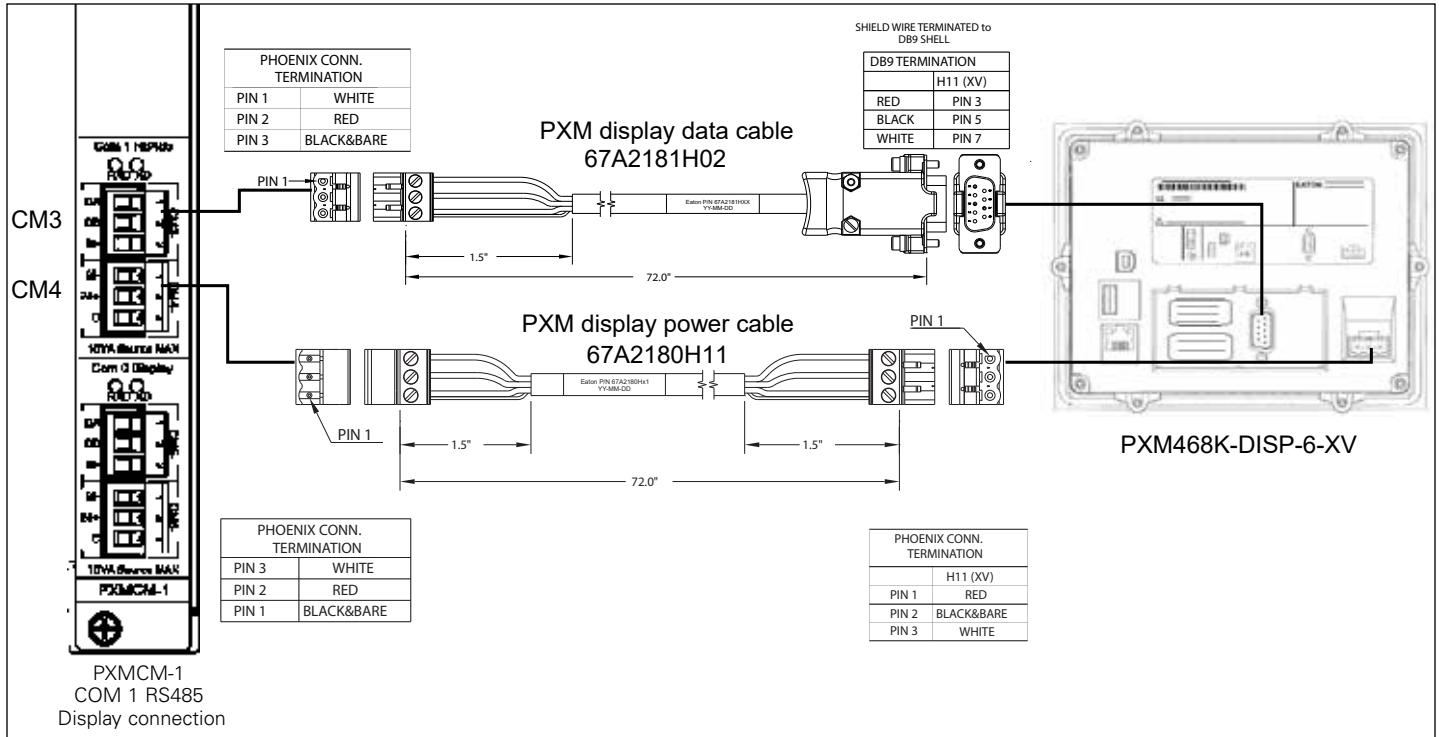


Figure 5. Power and COM port connections for the PXM4/6/8K meter display touch screen display.

Included with the PXM4/6/8K meter color touchscreen display is a data cable to connect the DB9 of the color touchscreen display to 3-terminal COM 1 (RS485) of the PXM4/6/8K meter.

In order to communicate with the display, the meter must be configured as "Slave (RTU)." This can be set using the meter's web server configuration page for COM 1 & 2.

The supplied cables are designed to connect the meter to the PXM4/6/8K meter color touchscreen display as follows:

- Data cable: CM3
- Power cable: CM4

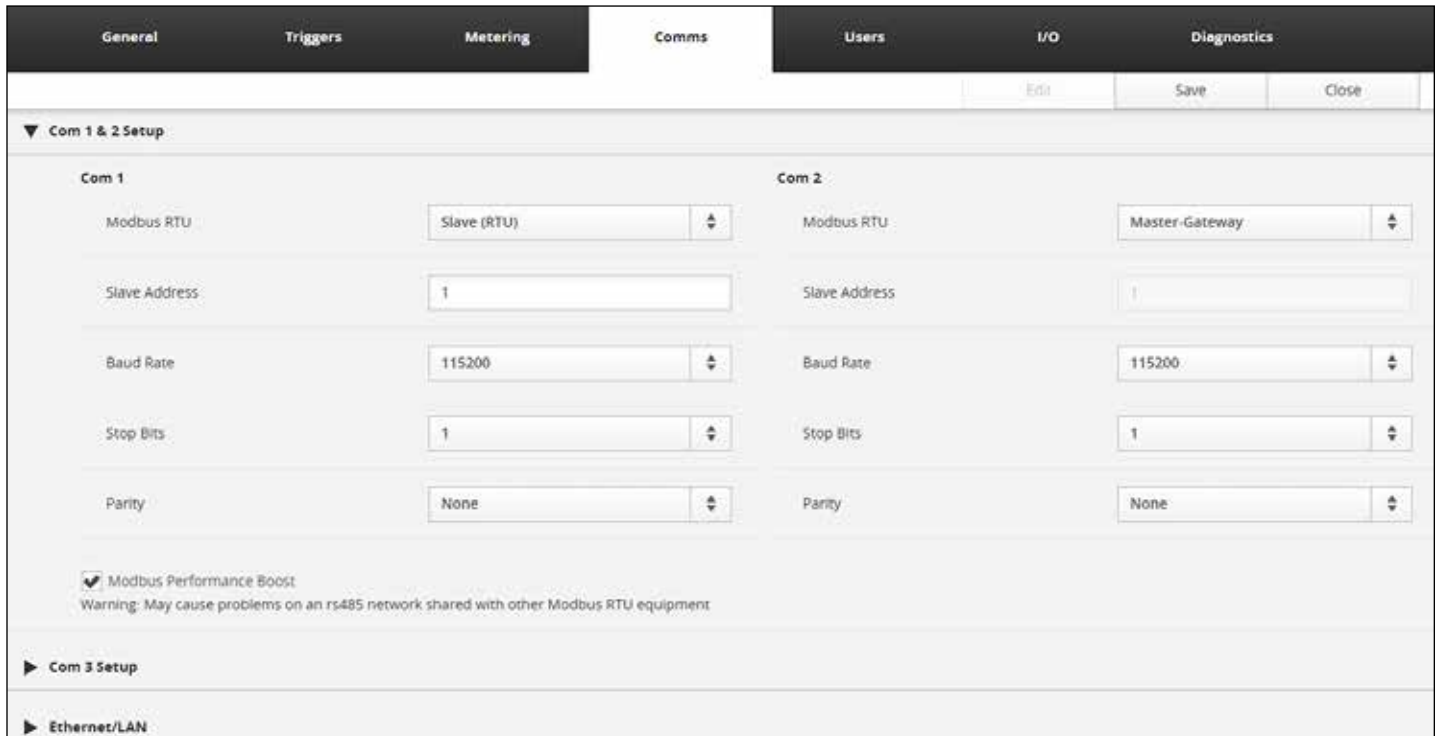


Figure 6. Meter web server configuration screen COM 1 & 2 setup.

For best results, use the default communication settings for the PXM4/6/8K meter and PXM4/6/8K meter color touchscreen display (115.2 kbps, 1 start bit, 1 stop bit, no parity).

Note: By default, the PXM4/6/8K meter color touchscreen display is pre-set for a PXM4/6/8K meter slave address of "01". To accommodate a different slave address, the user **MUST** change the PXM4/6/8K meter color touchscreen display's "Modbus ID". This number **MUST** match the rotary switch located on the side of the meter. This setting can be found under Settings > Meter ID.



Figure 7. Changing the Modbus ID.

Meter firmware requirements

- The minimum meter firmware version required for compatibility is 13.3.6.1.

Technical information

- 640 x 480 pixel backlit VGA touch screen display.
- Power: 24 Vdc input.
 - Recommended: PXM display power cable (67A2180H11) between the display and PXM4/6/8K's CM3 source
 - Optional: PSG60E (85-264Vac), PSG60F (320-576Vac)

Display measurements

- Height: 5.24 in. (133 mm);
- Width: 6.81 in. (173 mm);
- Depth: 1.54 in. (39 mm);
- Weight: 1.32 lb (600 g);
- Cutout dimensions: 4.61 in. x 6.18 in. (117.0 x 157.0 mm).

Ratings

- Front bezel IP rating: IP65;
- Operating temperature: 0 ~ 50°C (32 ~ 122°F);
- Storage temperature: -20 ~ 60°C (-4 ~ 140°F);
- Ambient humidity: 10% ~ 90% RH (0 ~ 40°C [32 ~ 104°F]), 10% ~ 55% RH (41 ~ 50°C [105.8 ~ 122°F]).

DISCLAIMER OF WARRANTIES AND LIMITATION OF LIABILITY

The information, recommendations, descriptions and safety notations in this document are based on Eaton's ("Eaton") experience and judgment and may not cover all contingencies. If further information is required, an Eaton sales office should be consulted. Sale of the product shown in this literature is subject to the terms and conditions outlined in appropriate Eaton selling policies or other contractual agreement between Eaton and the purchaser.

THERE ARE NO UNDERSTANDINGS, AGREEMENTS, WARRANTIES, EXPRESSED OR IMPLIED, INCLUDING WARRANTIES OF FITNESS FOR A PARTICULAR PURPOSE OR MERCHANTABILITY, OTHER THAN THOSE SPECIFICALLY SET OUT IN ANY EXISTING CONTRACT BETWEEN THE PARTIES. ANY SUCH CONTRACT STATES THE ENTIRE OBLIGATION OF EATON. THE CONTENTS OF THIS DOCUMENT SHALL NOT BECOME PART OF OR MODIFY ANY CONTRACT BETWEEN THE PARTIES.

In no event will Eaton be responsible to the purchaser or user in contract, in tort (including negligence), strict liability or otherwise for any special, indirect, incidental or consequential damage or loss whatsoever, including but not limited to damage or loss of use of equipment, plant or power system, cost of capital, loss of power, additional expenses in the use of existing power facilities, or claims against the purchaser or user by its customers resulting from the use of the information, recommendations and descriptions contained herein. The information contained in this manual is subject to change without notice.

Eaton
Electrical Sector
1000 Eaton Boulevard
Cleveland, OH 44122
United States
877-ETN-CARE (877-386-2273)
Eaton.com

© 2019 Eaton
All Rights Reserved
Printed in USA
Publication No. TD150029EN / TBG001461
June 2019