

Connections

To use the PXM4/6/8K Meter Advanced Color Touchscreen Display, provide power through the included connector. This display accepts an input from 9-36 VDC with a maximum power consumption of 60 W.

The display's plug-in terminals provide connections for +V, -V, and floating ground.

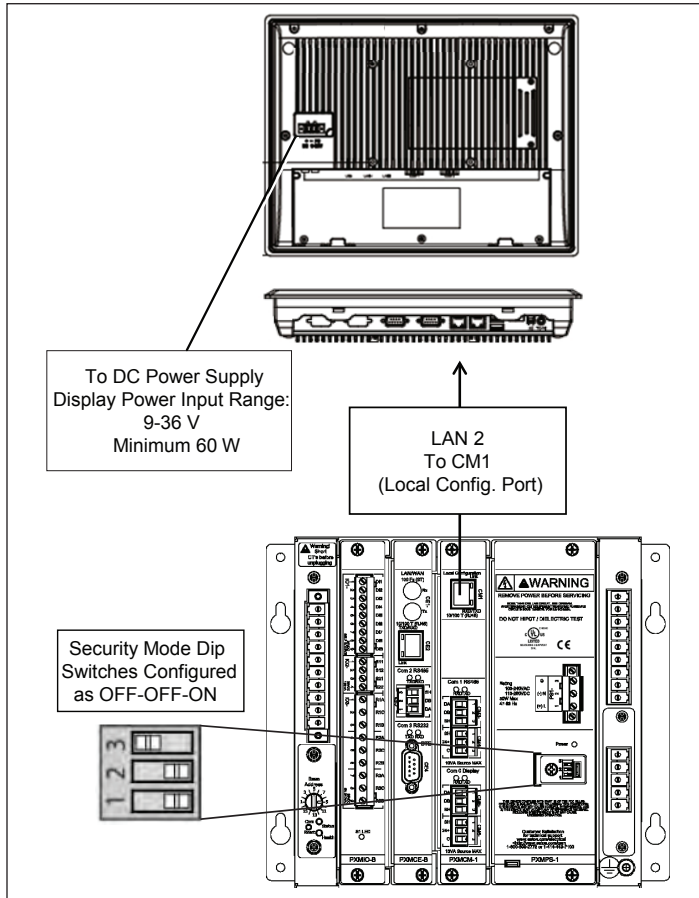


Figure 3. Power and COM Port Connections for the PXM4/6/8K Meter Advanced Color Touchscreen Display.

The PXM 4/6/8K Meter Advanced Color Touchscreen Display requires a RJ45 Ethernet cable. This connects directly to the Local Configuration CM1 on PXMCM-1.

When the unit is powered and properly connected to the meter, the main screen of the meter interface should appear

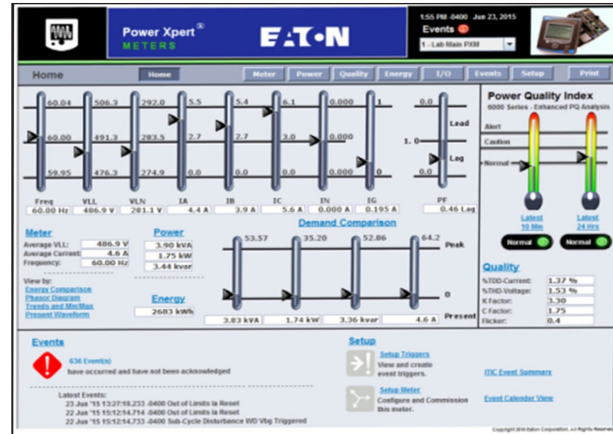


Figure 4. Main Screen of Meter Interface.



Figure 5. Meter Web Server Configuration Screen Com 1 & 2 Setup.

In order to communicate with multiple meters, the primary meter must be configured as Master Gateway. Any additional meters must be configured as Slave Gateway. This can be set using the meter's web server configuration page for Com 1 & 2.

Additional (slave) meters can be connected to the display by daisy-chaining the RS 485 ports between meters. This configuration also requires that each meter in the chain have a unique base address. This can be set with the rotary switch located on the bottom left side of the meter. Please reference the PXM4000/6000/8000 User and Installation Manual for full details.

Remote access to Ethernet enabled features for 4/6/8K requires LAN connection to PXMCE-B.

Eaton
 Electrical Sector
 1000 Eaton Boulevard
 Cleveland, OH 44122
 United States
 877-ETN-CARE (877-386-2273)
 Eaton.com

© 2015 Eaton
 All Rights Reserved
 Printed in USA
 Publication No. TD150019EN / TBG001242
 October 2015