

Enhanced Type 3R enclosures



Enhanced Type 3R panelboard enclosure

Eaton is committed to providing the highest quality panelboards and switchboards in the market. That is why we are proud to introduce a revised Type 3R design that is more resistant to corrosion. This material and design better prevents against rust, and delivers an appearance suitable for Eaton's world-class quality products.

Key benefits

- Improved safety
- Increased longevity of product
- Improved product appearance over time
- Reduced risk of tampering or damage

Key features

- Galvanized G40 steel
- Zinc coated external hardware
- Hardware on sides, not on front or top
- No external door hinge
- Folded outside edge

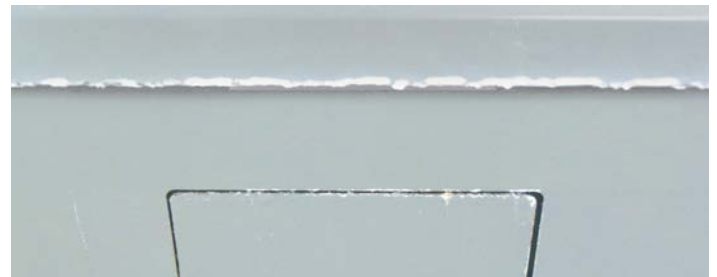
Standards

Testing and evaluation was performed to the following standards:

- ASTM B117-19 Standard Practice for Operating Salt Spray (Fog) Apparatus
- ASTM D1654-08 Standard Test Method for Evaluation of Painted or Coated Specimens Subjected to Corrosive Environments
- ASTM D714-02 Standard Test Method for Evaluating Degree of Blistering of Paints



Generic steel enclosure after 1200-hour salt spray



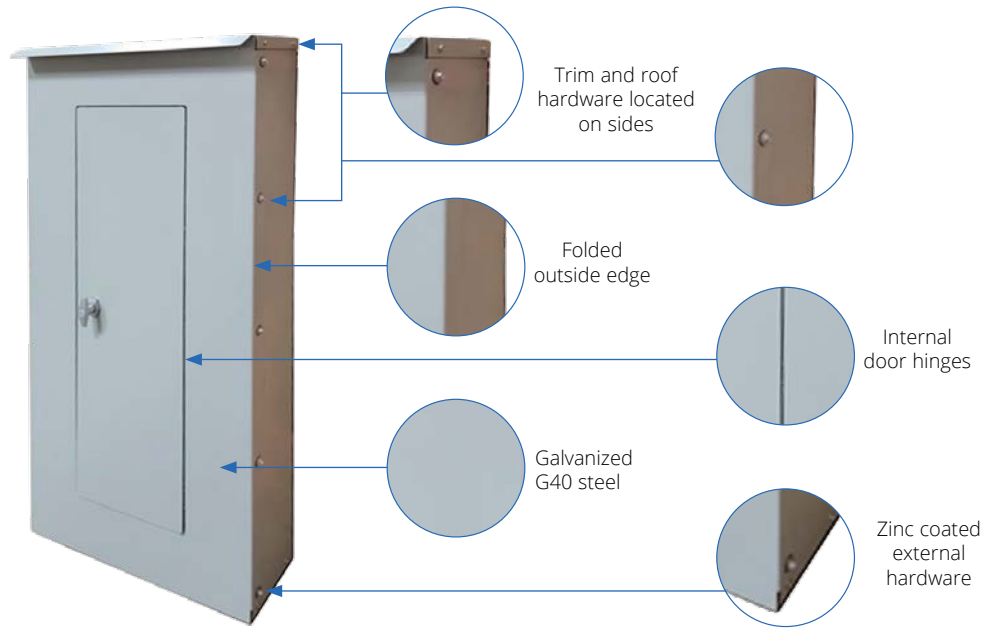
New Eaton galvanized steel after 2000-hour salt spray



Powering Business Worldwide

A deeper dive into the panelboard enclosure redesign

- The majority of rust build-up occurs at sheet metal edges, on hardware, and around welded hinges
- Each modification of the new panelboard enclosures specifically addresses a source of rust, resulting in improved product longevity and customer satisfaction
- Folded edges better prevent water ingress and reduce exposure to sharp edges, improving safety
- Internal, concealed door hinges reduce the risk of tampering or damage



Panelboard enclosure catalog numbers

Panelboard type	Catalog number		Box dimensions in inches (mm)		
	Enhanced	Classic	Height	Width	Depth
PRL1X	LWPQ2024G	LWPQ2024	24.00 (609.6)	20.00 (508.0)	6.75 (171.5)
PRL2X	LWPQ2036G	LWPQ2036	36.00 (914.4)	20.00 (508.0)	6.75 (171.5)
PRL3E	LWPQ2042G	LWPQ2042	42.00 (1066.8)	20.00 (508.0)	6.75 (171.5)
PRL3X	LWPQ2048G	LWPQ2048	48.00 (1219.2)	20.00 (508.0)	6.75 (171.5)
Pow-R-Command™	LWPQ2060G	LWPQ2060	60.00 (1524.0)	20.00 (508.0)	6.75 (171.5)
	LWPQ2072G	LWPQ2072	72.00 (1828.8)	20.00 (508.0)	6.75 (171.5)
	LWPQ2090G	LWPQ2090	90.00 (2286.0)	20.00 (508.0)	6.75 (171.5)
	BWPQ2024G	BWPQ2024	24.00 (609.6)	20.00 (508.0)	6.75 (171.5)
	BWPQ2036G	BWPQ2036	36.00 (914.4)	20.00 (508.0)	6.75 (171.5)
	BWPQ2048G	BWPQ2048	48.00 (1219.2)	20.00 (508.0)	6.75 (171.5)
	BWPQ2060G	BWPQ2060	60.00 (1524.0)	20.00 (508.0)	6.75 (171.5)
	BWPQ2072G	BWPQ2072	72.00 (1828.8)	20.00 (508.0)	6.75 (171.5)
	LWPQ2060TCG	LWPQ2060TC	60.00 (1524.0)	20.00 (508.0)	6.75 (171.5)
	LWPQ2072TCG	LWPQ2072TC	72.00 (1828.8)	20.00 (508.0)	6.75 (171.5)
	LWPQ2836G	LWPQ2836	36.00 (914.4)	28.00 (711.2)	6.75 (171.5)
	LWPQ2848G	LWPQ2848	48.00 (1219.2)	28.00 (711.2)	6.75 (171.5)
	LWPQ2860G	LWPQ2860	60.00 (1524.0)	28.00 (711.2)	6.75 (171.5)
	LWPQ2872G	LWPQ2872	72.00 (1828.8)	28.00 (711.2)	6.75 (171.5)
LWPQ2890G	LWPQ2890	90.00 (2286.0)	28.00 (711.2)	6.75 (171.5)	
PRL4X	RPCB2457G	RPCB2457	57.00 (1447.8)	24.00 (609.6)	14.75 (374.7)
	RPCB2473G	RPCB2473	73.00 (1866.9)	24.00 (609.6)	14.75 (374.7)
	RPCB2490G	RPCB2490	90.00 (2286.0)	24.00 (609.6)	14.75 (374.7)
	RPCB3673G	RPCB3673	73.00 (1866.9)	36.00 (914.4)	14.75 (374.7)
	RPCB3690G	RPCB3690	90.00 (2286.0)	36.00 (914.4)	14.75 (374.7)

Eaton
 1000 Eaton Boulevard
 Cleveland, OH 44122
 United States
 Eaton.com

©2024 Eaton
 All Rights Reserved
 Printed in USA
 Publication No. PA014032EN / Z28380
 January 2024

For more information on Eaton panelboards,
 please visit [Eaton.com/panelboards](https://www.eaton.com/panelboards)

Eaton is a registered trademark.
 All other trademarks are property
 of their respective owners.

Follow us on social media to get the
 latest product and support information.

