

Quick selector reference guide

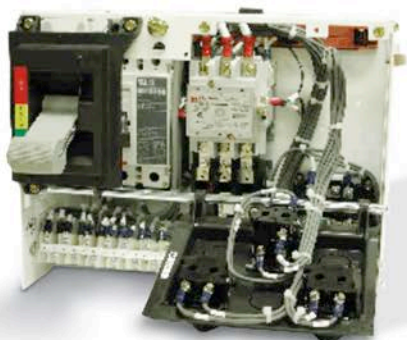
Motor Control Center
Aftermarket Buckets



EATON

Powering Business Worldwide

Table of contents



Series 2100 MCC bucket

Motor Control Center (MCC) Aftermarket Buckets

Overview

Product contact information	4
Questions to ask	5
MCC selection & sizes	6-7
Catalog numbering (Aftermarket MCC Starter Buckets)	8
Aftermarket MCC Starter types	9
Catalog numbering (Aftermarket MCC Feeder Buckets/Units)	10
Common modifications	11

Eaton® MCC designs

FlashGard®	12
<i>IT</i> . MCC.....	13
Freedom 2100 (F2100).....	14

Cutler-Hammer® MCC designs

Freedom Unitrol®.....	15
F10 Unitrol.....	16
9800 Unitrol.....	17

Westinghouse® MCC designs

Advantage	18
Series 2100/5 Star	19
Type W	20
11-300.....	21

Other manufacturer MCC designs

ITE/Gould® (5600 Series)	22
General Electric® (7700/8000)	23
Allen-Bradley® (Centerline Series K and later)	24
Siemens®/Furnas® (Series 89)	25
Square D® (Model 4/ Model 5/ Model 6)	26
Moeller® (Series 90, 100, 170, 200, 3000 and Modan 3000)	27
FPE® (5325/5320)	28

Support services

MCC Aftermarket selling tips.....	29
Product & service locations.....	30
MCC terminology	31

Questions to ask

Step 1

Q What type of MCC do you need?

A — Please reference photos on [page 7](#) to select correct vintage

Q What type of bucket do you require?

A — Starter unit (go to step 2)
— Feeder unit (go to step 3)

Step 2

Q What type of disconnect do you need?

A — HMCP/Breaker
— Fusible

Q What type of starter do you require?

A — FVNR (Full-voltage non-reversing)
— FVR (Full-voltage reversing)

Q What is your starter size?

A — See chart on [page 9](#) for selection

Q What modifications do you need?

A — See chart on [page 11](#) for common modifications

Step 3

Q What type of disconnect do you require?

A — Circuit breaker
— Fusible switch

Q What amperage do you need?

A — See catalog numbering on [page 10](#) for available sizes

MCC selection & sizes

Eaton Motor Control Centers Aftermarket products and services

Table for identifying Motor Control Center types

MCC Type	Type of Handle Mechanism	Starter Type	Bucket Width (Inches)	Door Width (Inches)	Page Number
11-300	Rotary	11-200 Life Line Type N	15-3/4	20	21
9800 Unitrol	Rotary and Lever	3 Star	16-1/8	19-3/8	17
Type W	Slider	A200 or 11-200	11-3/4	13-3/8	20
F10 Unitrol	Slider and Lever	Citation	14	14-3/4 with Wireway 19-1/2 without Wireway	16
Freedom Unitrol	Slider	Freedom Series	13-7/8	15-1/2	15
Series 2100/5 Star	Lever	A200	13-3/4	15-5/8	19
Advantage	Lever	Advantage	13-3/4	15-5/8	18
Freedom 2100	Lever	Freedom Series	13-3/4	15-5/8	14
IT . MCC	Rotary	IT -EM	13-3/4	15-5/8	13
FlashGard	Rotary	Freedom Series	13-3/4	15-5/8	12

Note: See photos on [page 7](#) to identify the vintage.

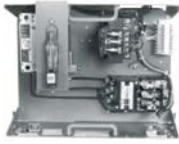
In the event that the nameplate is missing, it is possible to identify the MCC design by the type of handle mechanism, starter type, bucket width and door width.

Contact [1-800-OLD-UNIT \(1-800-653-8648\)](tel:1-800-OLD-UNIT).

MCC type



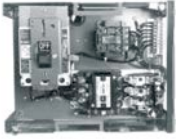
11-300



9800 Unitrol



Type W



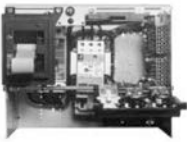
F10 Unitrol



Freedom Unitrol



Series 2100/5 Star



Advantage



Freedom 2100



FlashGard MCC

Identification by original handle mechanism



Freedom 2100,
Advantage,
Series 2100/5 Star



Freedom Unitrol



F10 Unitrol Slider



F10 Unitrol Lever



Type W



9800 Unitrol



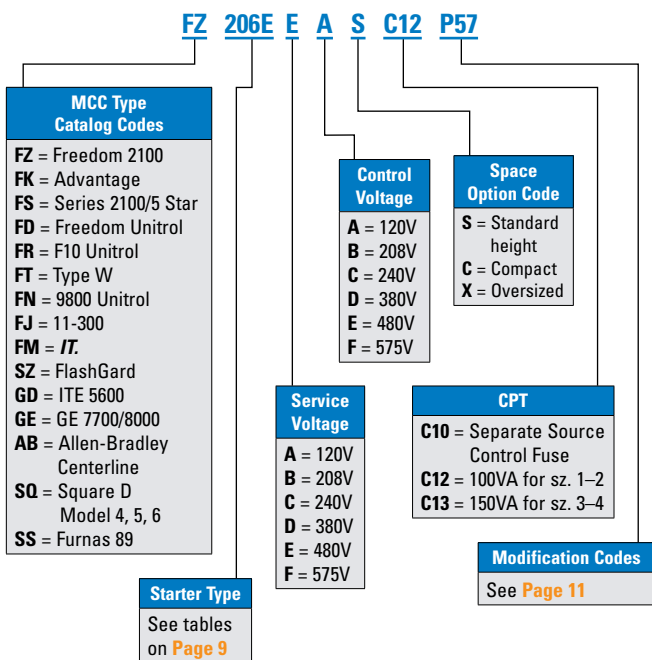
11-300



IT Handles

Catalog numbering system

Aftermarket MCC Starter Buckets



Aftermarket MCC Starter types

Full-Voltage Non-reversing Combination Starter—HMCP Disconnect

NEMA Size	Maximum Horsepower					HMCP Size	Starter Class Code
	208V	240V	380V	480V	600V		
1	.50	.33	1	1	1.50	3 Amp	206A
1	1	1	2	3	3	7 Amp	206B
1	3	3	5	7.50	7.50	15 Amp	206C
1	7.50	7.50	10	10	15	30 Amp	206D
2	10	15	25	25	30	50 Amp	206E
3	25	30	50	50	50	100 Amp	206H
4	40	50	75	100	100	150 Amp	206L

Full-Voltage Reversing Combination Starter—HMCP Disconnect

NEMA Size	Maximum Horsepower					HMCP Size	Starter Class Code
	208V	240V	380V	480V	600V		
1	.50	.33	1	1	1.50	3 Amp	216A
1	1	1	2	3	3	7 Amp	216B
1	3	3	5	7.50	7.50	15 Amp	216C
1	7.50	7.50	10	10	15	30 Amp	216D
2	10	15	25	25	30	50 Amp	216E
3	25	30	50	50	50	100 Amp	216H
4	40	50	75	100	100	150 Amp	216L

Full-Voltage Non-reversing Combination Starter—Fusible Disconnect

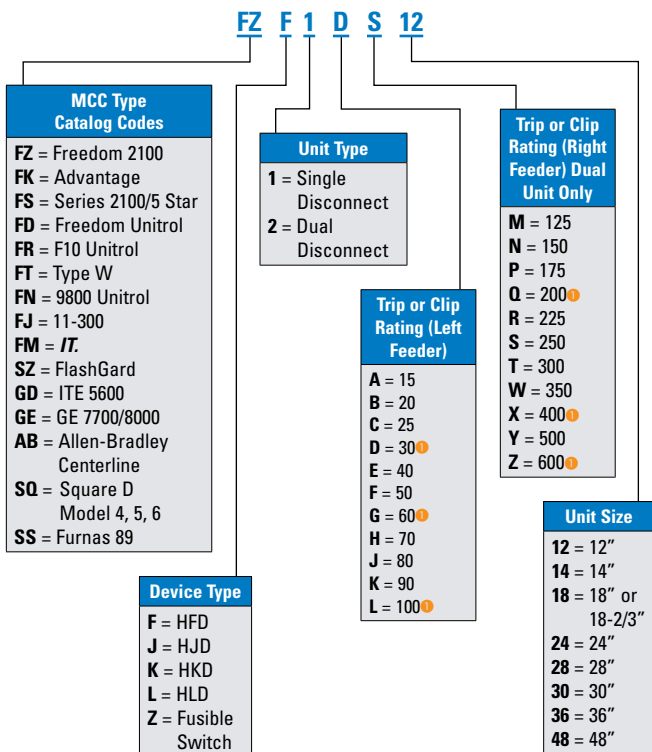
NEMA Size	Maximum Horsepower					Fuse Size	Starter Class Code
	208V	240V	380V	480V	600V		
1	7.50	7.50	10	10	15	30 Amp	204D
2	10	15	25	25	30	50 Amp	204E
3	25	30	50	50	50	100 Amp	204H
4	40	50	75	100	100	150 Amp	204L

Full-Voltage Reversing Combination Starter—Fusible Disconnect

NEMA Size	Maximum Horsepower					Fuse Size	Starter Class Code
	208V	240V	380V	480V	600V		
1	7.50	7.50	10	10	15	30 Amp	214D
2	10	15	25	25	30	50 Amp	214E
3	25	30	50	50	50	100 Amp	214H
4	40	50	75	100	100	150 Amp	214L

Catalog numbering system

Aftermarket MCC Feeder Buckets/Units



① Fusible Disconnect Sizes

Common modifications

Abbreviated list of common modification codes

Note: Please contact your local Service Center for all available modifications and to learn which modifications will work for your aftermarket needs.

Modification Codes	Option Description
B10	Breaker Shunt Trip—120V
B11	Breaker Auxiliary Switch—1NO/1NC
B19	Breaker Auxiliary Switch—2NO/2NC
C10	Control fuse wired for separate source in lieu of CPT
C11	Control fuse/disconnect for separate source in lieu of CPT
C12	CPT 100VA for size 1 and 2 starters, fused
C13	CPT 150VA for size 3 and 4 starters, fused
C18	Full capacity CPT for size 5 starters, fused
M12	Mini Elapsed Time Meter
M16	IQ-200 Meter with 3 CTs
O19	Overload Relay Heater/Heater Pack
O20	C440 Solid-State Overload Relay
P10	Red 'RUN' Light
P11	Green 'STOPPED' Light
P15	Red 'RUN' Push-to-Test Light
P16	Green 'STOPPED' Push-to-Test Light
P20	Special Function Light
P32	'START/STOP' Pushbutton
P35	'ON/OFF' Pushbutton
P36	'FORWARD/REVERSE/STOP' Pushbutton
P38	'FAST/OFF/SLOW' Pushbutton
P41	Special Function Pushbutton
P50	'ON-OFF' Selector Switch
P53	'START-STOP' Selector Switch
P55	'FORWARD-REVERSE' Selector Switch
P56	Special Function 2-Position Selector Switch
P57	'HAND-OFF-AUTO' Selector Switch
P58	'LOCAL-OFF-REMOTE' Selector Switch
P59	'FAST-OFF-SLOW' Selector Switch
P60	'HIGH-OFF-LOW' Selector Switch
P61	Special Function 3-Position Selector Switch
R24	D15 4-Pole Control Relay
S11	1NO-1NC Starter Auxiliary Contacts
S22	2NO-2NC Starter Auxiliary Contacts
T10	Pull-Apart Type Terminal Blocks (Standard on all Vintages except Type W and 11-300)
U10	Surge Suppressor on Coil
U11	Type SIS Control Wire
U14	Wiremarkers—Sleeve Type on all Control Wire
U17	Wiring Diagram Inside Starter Unit Door

Eaton MCC designs



Eaton
FlashGard
2008–Present

Compatible with 1981–Present
Vintages of Freedom 2100, Series
2100/5 Star and Advantage only.

Replacement Starter Units

Specifications

Units	Breaker		Fusible	
	NEMA	Spacing (in.)	NEMA	Spacing (in.)
FVNR	1–5	Call ❶	1–5	Call ❶
FVR	1–5	Call ❶	1–5	Call ❶
IT Soft Starters	10–200 hp	Call ❶	10–200 hp	Call ❶
2-Speed 1 Winding	1–4	Call ❶	1–4	Call ❶
2-Speed 2 Winding	1–4	Call ❶	1–4	Call ❶
RVAT	2–4	Call ❶	2–4	Call ❶
Part Winding	1–4	Call ❶	1–4	Call ❶
Wye Delta	2–4	Call ❶	2–4	Call ❶

Feeder Units

- Breaker: 15–400 Amps
- Fusible: 30–400 Amps

Units supplied with

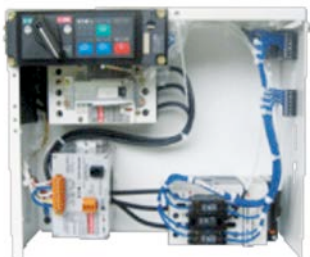
- UL label
- New stabs
- New steel wrapper
- New door
- Mounting hardware
- Complete upgrade kit

Options

- Pushbuttons
- Pilot lights
- Selector switches
- And more...

Note: NEMA size and spacing can vary depending on starter unit. Refer to the parts catalogs for each manufacturer or call ❶ and request a quote for more information.

❶ 1-800-OLD-UNIT (1-800-653-8648)



Eaton
IT. MCC
 2002–Present

Replacement Starter Units

Specifications

Units	Breaker		Fusible	
	NEMA	Spacing (in.)	NEMA	Spacing (in.)
FVNR	1–5	Call ①	1–5	Call ①
FVR	1–5	Call ①	1–5	Call ①
2-Speed 1 Winding	1–4	Call ①	1–4	Call ①
2-Speed 2 Winding	1–4	Call ①	1–4	Call ①
IT . Soft Starters	10–200 hp	Call ①	10–200 hp	Call ①

Feeder Units

- Breaker: 15–600 Amps
- Fusible: 30–400 Amps

Note: 600 Amp units are fixed mounted.

Units supplied with

- UL label
- New stabs
- New steel wrapper
- New door
- Mounting hardware

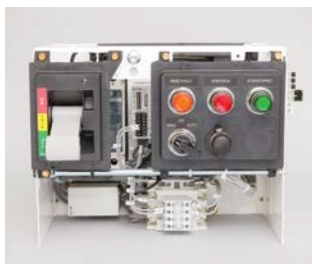
Options

- Pushbuttons
- Pilot lights
- Selector switches
- And more...

Note: **IT**. components have reached end-of-life status. Please contact Eaton MCC Aftermarket for replacement options.

Note: NEMA size and spacing can vary depending on starter unit. Refer to the parts catalogs for each manufacturer or call ① and request a quote for more information.

① 1-800-OLD-UNIT (1-800-653-8648)



Eaton

Freedom 2100 (F2100)

1994–Present

Replacement Starter Units

Specifications

Units	Breaker		Fusible	
	NEMA	Spacing (in.)	NEMA	Spacing (in.)
FVNR	1–5	6–36	1–5	6–60
FVR	1–5	18–60	1–4	24–54
2-Speed 1 Winding	1–4	24–36	1–4	24–60
2-Speed 2 Winding	1–4	24–30	1–4	24–54
Autotransformer	2–4	36–48	2–4	36–72
Part Winding	1–4	24–36	1–4	24–54
Wye Delta Open	2–4	42–60	2–4	30–72
Wye Delta Closed	2–4	42–60	2–4	30–72
Non-reversing Vacuum	—	—	4–5	36–48
IT Soft Starters	10–200 hp	12–36	—	—

Feeder Units

- Breaker: 15–600 Amps
- Fusible: 30–600 Amps

Note: 600 Amp units are fixed mounted.

Units supplied with

- UL label
- New stabs
- New steel wrapper
- New door
- Mounting hardware

Options

- Pushbuttons
- Pilot lights
- Selector switches
- And more...

Note: NEMA size and spacing can vary depending on starter unit. Refer to the parts catalogs for each manufacturer or call [1-800-OLD-UNIT](tel:1-800-OLD-UNIT) and request a quote for more information.

[1-800-OLD-UNIT \(1-800-653-8648\)](tel:1-800-OLD-UNIT)

Cutler-Hammer MCC designs



Cutler-Hammer Freedom Unitrol 1988–1994

Replacement Starter Units

Specifications

Units	Breaker		Fusible	
	NEMA	Spacing (in.)	NEMA	Spacing (in.)
FVNR	1–5	6–48	1–5	6–72
FVR	1–5	18–72	1–4	18–48
2-Speed 1 Winding	1–5	24–72	1–4	24–60
2-Speed 2 Winding	1–5	24–72	1–4	24–60
Autotransformer	2–5	48–72	2–4	48–72
Part Winding	1–5	24–72	1–4	24–60
Wye Delta Open	2–5	30–72	2–5	30–72
Wye Delta Closed	2–5	36–72	2–4	30–72
IT Soft Starters	10–200 hp	18–36	—	—

Feeder Units

- Breaker: 15–600 Amps
- Fusible: 30–600 Amps

Note: 400 Amp units and above are cable in/out. No stabs are provided.

Units supplied with

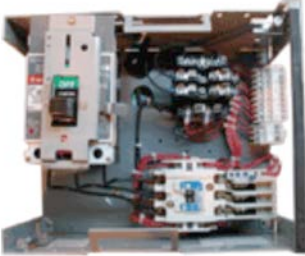
- UL label
- New stabs
- New steel wrapper
- New door
- Mounting hardware

Options

- Pushbuttons
- Pilot lights
- Selector switches
- And more...

Note: NEMA size and spacing can vary depending on starter unit. Refer to the parts catalogs for each manufacturer or call [1-800-OLD-UNIT](tel:1-800-OLD-UNIT) and request a quote for more information.

[1-800-OLD-UNIT \(1-800-653-8648\)](tel:1-800-OLD-UNIT)



Cutler-Hammer F10 Unitrol 1972–1989

Replacement Starter Units

Specifications

Units	Breaker		Fusible	
	NEMA	Spacing (in.)	NEMA	Spacing (in.)
FVNR	1–5	12–48	1–4	12–36
FVR	1–4	18–36	1–4	18–42
2-Speed 1 Winding	1–4	24–42	1–4	24–48
2-Speed 2 Winding	1–4	18–36	1–4	18–42
Part Winding	1–3	18–30	1–3	18–42
Wye Delta Open	2–4	24–48	2–4	30–60
Wye Delta Closed	2–5	30–72	2–3	36–48
IT Soft Starters	10–200 hp	18–48	—	—

Feeder Units

- Breaker: 15–400 Amps
- Fusible: 30–400 Amps

Note: 400 Amp units and above are cable in/out. No stabs are provided.

Units supplied with

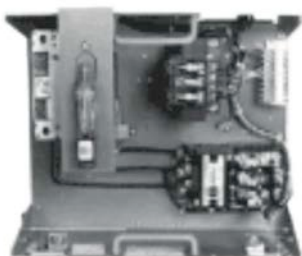
- UL label
- New stabs
- New steel wrapper
- New door
- Mounting hardware

Options

- Pushbuttons
- Pilot lights
- Selector switches
- And more...

Note: NEMA size and spacing can vary depending on starter unit. Refer to the parts catalogs for each manufacturer or call **1** and request a quote for more information.

1 1-800-OLD-UNIT (1-800-653-8648)



Cutler-Hammer 9800 Unitrol 1956–1974

Replacement Starter Units

Specifications

Units	Breaker		Fusible	
	NEMA	Spacing (in.)	NEMA	Spacing (in.)
FVNR	1–5	9–42	1–4	14–42
FVR	1–4	18-2/3–42	1–4	28–56
2-Speed 1 Winding	1–4	28–56	1–3	28–42
2-Speed 2 Winding	1–4	28–42	1–4	28–56
Part Winding	1–3	28–42	1–3	28–56
<i>IT</i> . Soft Starters	10–200 hp	18–42	—	—

Feeder Units

- Breaker: 15–400 Amps
- Fusible: 30–400 Amps


Note: 400 Amp units and above are cable in/out. No stabs are provided.

Units supplied with

- UL label
- New stabs
- New steel wrapper
- New door
- Mounting hardware

Options

- Pushbuttons
- Pilot lights
- Selector switches
- And more...

Note: NEMA size and spacing can vary depending on starter unit. Refer to the parts catalogs for each manufacturer or call  and request a quote for more information.

 1-800-OLD-UNIT (1-800-653-8648)

Westinghouse MCC designs



Westinghouse
Advantage
1991–Present

Replacement Starter Units

Specifications

Units	Breaker		Fusible	
	NEMA	Spacing (in.)	NEMA	Spacing (in.)
FVNR	1–5	6–36	1–5	6–54
FVR	1–5	18–60	1–4	24–48
2-Speed 1 Winding	1–4	24–36	1–4	24–54
2-Speed 2 Winding	1–5	24–72	1–4	24–48
Autotransformer	2–4	36–48	2–4	36–72
Part Winding	1–4	24–36	1–4	24–48
Wye Delta Open	2–4	30–42	2–4	36–60
Wye Delta Closed	2–4	48–60	2–4	54–72
IT Soft Starters	10–200 hp	12–36	—	—

Feeder Units

- Breaker: 15–600 Amps
- Fusible: 30–600 Amps

Units supplied with

- UL label
- New stabs
- New steel wrapper
- New door
- Mounting hardware

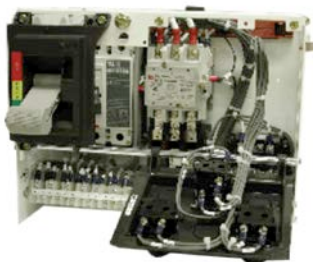
Options

- Pushbuttons
- Pilot lights
- Selector switches
- And more...

Note: NEMA size and spacing can vary depending on starter unit. Refer to the parts catalogs for each manufacturer or call [1-800-653-8648](tel:1-800-653-8648) and request a quote for more information.

Note: In addition to size and spacing, many Advantage components have reached end-of-life status. Please contact Eaton MCC Aftermarket for replacement options.

[1-800-OLD-UNIT \(1-800-653-8648\)](tel:1-800-OLD-UNIT)



Westinghouse

Series 2100/5 Star

1975–1994

Replacement Starter Units

Specifications

Units	Breaker		Fusible	
	NEMA	Spacing (in.)	NEMA	Spacing (in.)
FVNR	1–5	12–36	1–5	12–60
FVR	1–5	18–54	1–5	18–72
2-Speed 1 Winding	1–5	18–42	1–4	18–54
2-Speed 2 Winding	1–5	18–54	1–4	18–54
Autotransformer	2–5	36–72	2–4	36–72
Part Winding	1–5	18–72	2–4	24–54
Wye Delta Open	2–5	30–72	2–4	30–72
Wye Delta Closed	2–5	30–72	2–4	30–72
Non-Reversing Vacuum	—	—	4–5	36–72
IT Soft Starters	10–200 hp	12–36	—	—

Feeder Units


- Breaker: 15–600 Amps
- Fusible: 30–600 Amps

Units supplied with

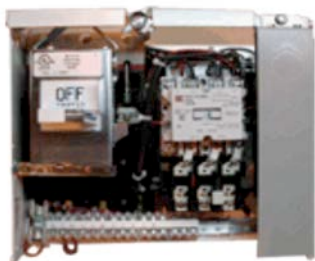
- UL label
- New stabs
- New steel wrapper
- New door
- Mounting hardware

Options

- Pushbuttons
- Pilot lights
- Selector switches
- And more...

Note: NEMA size and spacing can vary depending on starter unit. Refer to the parts catalogs for each manufacturer or call  and request a quote for more information.

 1-800-OLD-UNIT (1-800-653-8648)



Westinghouse Type W 1965–1975

Replacement Starter Units

Specifications

Units	Breaker		Fusible	
	NEMA	Spacing (in.)	NEMA	Spacing (in.)
FVNR	1–5	12–36	1–5	12–54
FVR	1–5	18–60	1–4	18–42
2-Speed 1 Winding	1–4	18–36	—	—
2-Speed 2 Winding	1–4	18–36	—	—
IT Soft Starters	10–200 hp	18–36	—	—

Feeder Units

- Breaker: 15–400 Amps
- Fusible: 30–400 Amps

Units supplied with

- UL label
- New stabs
- New steel wrapper
- New door
- Mounting hardware

Options

- Pushbuttons
- Pilot lights
- Selector switches
- And more...

Note: NEMA size and spacing can vary depending on starter unit. Refer to the parts catalogs for each manufacturer or call [1-800-OLD-UNIT](tel:1-800-OLD-UNIT) and request a quote for more information.

[1-800-OLD-UNIT \(1-800-653-8648\)](tel:1-800-OLD-UNIT)



Westinghouse

11-300

1950–1965

Replacement Starter Units

Specifications

Units	Breaker		Fusible	
	NEMA	Spacing (in.)	NEMA	Spacing (in.)
FVNR	1–5	9–37-1/3	1–5	14–56
FVR	1–5	18-2/3–56	—	—
2-Speed 1 Winding	1–4	28–37-1/3	—	—
2-Speed 2 Winding	1–5	18-2/3–56	—	—
IT Soft Starters	10–200 hp	18-2/3–37	—	—

Feeder Units

- Breaker: 15–400 Amps
- Fusible: 30–400 Amps

Units supplied with

- UL label
- New stabs
- New steel wrapper
- New door
- Mounting hardware

Options

- Pushbuttons
- Pilot lights
- Selector switches
- And more...

Note: NEMA size and spacing can vary depending on starter unit. Refer to the parts catalogs for each manufacturer or call ① and request a quote for more information.

① 1-800-OLD-UNIT (1-800-653-8648)

Other manufacturer MCC designs



ITE/Gould
5600 Series
1957–1976

Replacement Starter Units

Specifications

Units	Breaker		Fusible	
	NEMA	Spacing (in.)	NEMA	Spacing (in.)
FVNR	1–5	12–48	—	—
FVR	1–4	Call ①	—	—
<i>IT</i> . Soft Starters	10–75 hp	18–24	—	—

Feeder Units

- Breaker: 15–400 Amps

Note: 400 Amp units and above are cable in/out. No stabs are provided.

Units supplied with

- UL label
- New stabs
- New steel wrapper
- New door
- Mounting hardware

Note: Midshelves are not supplied.

Options

- Pushbuttons
- Pilot lights
- Selector switches
- And more...

Note: NEMA size and spacing can vary depending on starter unit. Refer to the parts catalogs for each manufacturer or call ① and request a quote for more information.

① 1-800-OLD-UNIT (1-800-653-8648)



General Electric

7700/8000

1975–Present

Replacement Starter Units

Specifications

Units	Breaker		Fusible	
	NEMA	Spacing (in.)	NEMA	Spacing (in.)
FVNR	1–4	12–24	—	—
FVR	1–4	18–36	—	—

Feeder Units

- Breaker: 15–225 Amps

Units supplied with

- UL label
- New stabs
- New steel wrapper
- New door
- Mounting hardware

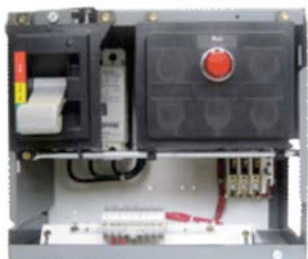
Note: Midshelves are not supplied.

Options

- Pushbuttons
- Pilot lights
- Selector switches
- And more...

Note: NEMA size and spacing can vary depending on starter unit. Refer to the parts catalogs for each manufacturer or call [1-800-653-8648](tel:1-800-653-8648) and request a quote for more information.

[1-800-653-8648](tel:1-800-653-8648)



Allen-Bradley Centerline Series K and later 1971–Present

Replacement Starter Units

Specifications

Units	Breaker		Fusible	
	NEMA	Spacing (in.)	NEMA	Spacing (in.)
FVNR	1–4	12–30	1–4	12–42
FVR	1–4	18–48	1–4	24–48
IT Soft Starters	10–75 hp	12–18	—	—

Feeder Units

- Breaker: 15–225 Amps
- Fusible: 30–200 Amps

Units supplied with

- UL label
- New stabs
- New steel wrapper
- New door
- Mounting hardware

Note: Midshelves are not supplied.

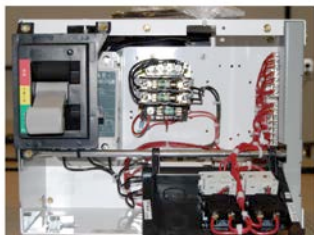
Units are compatible with Series K and later.

Options

- Pushbuttons
- Pilot lights
- Selector switches
- And more...

Note: NEMA size and spacing can vary depending on starter unit. Refer to the parts catalogs for each manufacturer or call [1-800-OLD-UNIT](tel:1-800-OLD-UNIT) and request a quote for more information.

[1-800-OLD-UNIT \(1-800-653-8648\)](tel:1-800-OLD-UNIT)



Siemens/ Furnas

Series 89

1979–2001

Replacement Starter Units

Specifications

Units	Breaker		Fusible	
	NEMA	Spacing (in.)	NEMA	Spacing (in.)
FVNR	1–4	12–24	—	—
FVR	1–4	18–36	—	—
IT Soft Starters	10–75 hp	12–18	—	—

Feeder Units

- Breaker: 15–225 Amps

Units supplied with

- UL label
- New stabs
- New steel wrapper
- New door
- Mounting hardware

Note: Midshelves are not supplied.

Options

- Pushbuttons
- Pilot lights
- Selector switches
- And more...

Note: NEMA size and spacing can vary depending on starter unit. Refer to the parts catalogs for each manufacturer or call [1-800-OLD-UNIT](tel:1-800-OLD-UNIT) and request a quote for more information.

[1-800-OLD-UNIT \(1-800-653-8648\)](tel:1-800-OLD-UNIT)



Square D

Model 4, Model 5 and Model 6

1970–Present

Replacement Starter Units

Specifications

Units	Breaker		Fusible	
	NEMA	Spacing (in.)	NEMA	Spacing (in.)
FVNR	1–4	12–30	—	—
FVR	1–4	18–36	—	—
IT Soft Starters	10–75 hp	12–18	—	—

Feeder Units

- Breaker: 15–225 Amps

Units supplied with

- UL label
- New stabs
- New steel wrapper
- New door
- Mounting hardware

Note: Midshelves are not supplied.

Options

- Pushbuttons
- Pilot lights
- Selector switches
- And more...

Note: NEMA size and spacing can vary depending on starter unit. Refer to the parts catalogs for each manufacturer or call [1](tel:1-800-OLD-UNIT) and request a quote for more information.

[1](tel:1-800-OLD-UNIT) 1-800-OLD-UNIT (1-800-653-8648)



Moeller

Series 90, 100, 170,
200, 3000 and
Modan 3000
1967–Present

Replacement Starter Units

Specifications

Units	Breaker		Fusible	
	HP	Spacing (in.)	HP	Spacing (in.)
FVNR	1–100 @ 480V	9–24	1–100 @ 480V	9–24
FVR	1–100 @ 480V	12–36	1–100 @ 480V	12–36

Feeder Units

- Breaker: 15–250 Amps
- Fusible: 30–200 Amps

Units supplied with

- New stabs
- New steel wrapper
- New door
- Mounting hardware

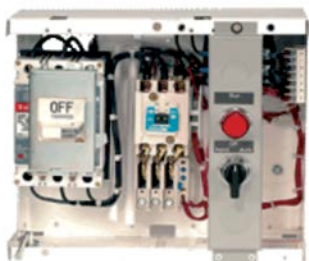
Note: Midshelves are not supplied.

Options

- Pushbuttons
- Pilot lights
- Selector switches
- And more...

Note: Size and spacing can vary depending on starter unit. Refer to the parts catalogs for each manufacturer or call [1-800-OLD-UNIT](tel:1-800-OLD-UNIT) and request a quote for more information.

[1-800-OLD-UNIT \(1-800-653-8648\)](tel:1-800-OLD-UNIT)



FPE

5325/5320

1966–1978

Replacement Starter Units

Specifications

Units	Breaker		Fusible	
	NEMA	Spacing (in.)	NEMA	Spacing (in.)
FVNR	1–5	12–42	—	—
FVR	1–4	18–24	—	—
IT Soft Starters	—	Call ❶	—	—

Feeder Units

- Breaker: 15–400 Amps

Note: 400 Amp units and above are cable in/out. No stabs are provided.

Units supplied with

- UL label
- New stabs
- New steel wrapper
- New door
- Mounting hardware

Note: Midshelves are not supplied.

Options

- Pushbuttons
- Pilot lights
- Selector switches
- And more...

Note: NEMA size and spacing can vary depending on starter unit. Refer to the parts catalogs for each manufacturer or call ❶ and request a quote for more information.

❶ 1-800-OLD-UNIT (1-800-653-8648)

Support services

MCC Aftermarket selling tips

- Call your Service Center! You have a local plant that is ready to help you quote all MCC Aftermarket.
- Use Bid Manager. MCC Aftermarket is under Take Offs— Motor Control Centers.
- Know what Eaton can do to help you! We can get you nearly any aftermarket unit in one day!
- Eaton's Web site will help you too! Just go to www.eaton.com/MCCAftermarket.
- Be sure when quoting MCC Aftermarket Starters that you ask your customer if they need standard wiring in the unit or if there is a custom wiring diagram.
- Be sure to find out how much space is available in the MCC structure where the customer wants to install a new bucket. Your customer may need to purchase a blank cover to fill in empty space.

Product & service locations

MCC Aftermarket

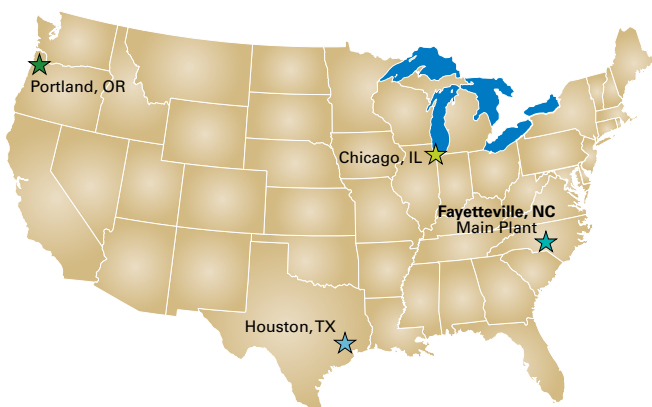
Four regional manufacturing locations:

★ Chicago, IL
(630) 260-6304

★ Houston, TX
(713) 939-9696

★ Fayetteville, NC
1-800-OLD-UNIT
(1-800-653-8648)

★ Portland, OR
(503) 582-2745



Visit our Internet Web page at:
<http://www.Eaton.com/Electrical>

MCC terminology

MCC

A Motor Control Center (MCC) is a series of structures fed from a main device that is filled with motor starters, soft starters, and breaker and fusible disconnect switches. They may also have metering, TVSS and communications.

Bucket

A bucket is the assembly containing the motor starter or feeder breaker/fusible switch that gets plugged into the MCC vertical bus. The vertical power bus is then fed through the stab assembly to the breaker or fusible switch. That breaker/fusible switch is able to disconnect power to all components it feeds. The bucket generally contains the disconnect, a CPT (Control Power Transformer), motor starter, relays, and any cover controls used to control the motor starter.

Unit

A unit is another term for bucket (see above).

Cover Controls

Cover controls are the devices seen and operated on the cover and the outside of the bucket. The most common cover controls are selector switches, pushbuttons and pilot lights. When quoting a new bucket, it is very important to find out what cover controls the customer needs so the bucket is wired properly from the factory.

X Space

MCC structures are measured in X space. Each X equals 6" of height. An example of how this is used is a Size 1 motor starter is generally built in a 2X bucket, or 12". Where this becomes key is in determining how much space the customer has available to add new loads.

Stab Assembly

The stab assembly is on the rear of the bucket and is what plugs the bucket onto the vertical bus. This must mate cleanly with the vertical bus to provide complete power to the bucket and to not arc.

Cover

The cover is literally the cover over the bucket or a blank cover over empty space. Many times when customers are buying new buckets, they will need additional covers to fill blank space.



At Eaton, we believe that power is a fundamental part of just about everything people do. Technology, transportation, energy and infrastructure—these are things the world relies on every day. That's why Eaton is dedicated to helping our customers find new ways to manage electrical, hydraulic and mechanical power more efficiently, safely and sustainably. To improve people's lives, the communities where we live and work, and the planet our future generations depend upon. Because that's what really matters. And we're here to make sure it works.

[See more at Eaton.com/whatmatters](https://www.eaton.com/whatmatters)

Eaton

Electrical Sector
1111 Superior Ave.
Cleveland, OH 44114
United States
877-ETN-CARE (877-386-2273)
Eaton.com

© 2018 Eaton Corporation
All Rights Reserved
Printed in USA
Publication No. CA04304001E / Z22074
December 2018

Eaton is a registered trademark of Eaton.

All other trademarks are property of their respective owners.



Powering Business Worldwide