

# Group Meter Main - With MCC Bypass

## 100 Amp Horizontal

Multiple Metering



**152 MCCM  
(closed)**



**152 MCCM  
(open)**

### Application

- For horizontal multi-meter/mains installations - 4 position maximum
- Manual circuit closing (link type) bypasses under separate sealable covers
- 225A main buss
- Factory installed breakers
- Receive ANSI C12.10 watt-hour meters
- Overhead or underground feed (see chart)
- Surface mount

### Construction

- Ring type
- NEMA Type 3R
- ANSI 61 gray E-coat finish
- Aluminum snap ring included

### Standards

- UL 67 Listed
- ANSI C12.7



Part/UPC Number	Catalog Number	Number of Positions	Buss Amps	Amp Rating	Jaws	Service Type	Access	Main Breaker			
								Voltage	AIC	Main	Bypass
78205107770	<b>152 MCCM</b>	2	225	100	4	1Ø/3W	OH/UG	120/240	10K	(2) 100A, 2P	MCC
78205107771	<b>153 MCCM</b>	3	225	100	4	1Ø/3W	OH/UG	120/240	10K	(3) 100A, 2P	MCC
78205107774	<b>154 MCCM</b>	4	225	100	4	1Ø/3W	OH/UG	120/240	10K	(4) 100A, 2P	MCC

Part/UPC Number	Catalog Number	Connections			Overall Dimensions			Top Provision	Knockout Layout
		Line	Load	Neutral	Height	Width	Depth		
78205107770	<b>152 MCCM</b>	#6 - 250 MCM	MCB	#6 - 250 MCM	28 <sup>1</sup> / <sub>2</sub> "	26 <sup>1</sup> / <sub>2</sub> "	4 <sup>5</sup> / <sub>8</sub> "	AW Hub	Fig. 1
78205107771	<b>153 MCCM</b>	#6 - 250 MCM	MCB	#6 - 250 MCM	28 <sup>1</sup> / <sub>2</sub> "	34 <sup>3</sup> / <sub>4</sub> "	4 <sup>5</sup> / <sub>8</sub> "	AW Hub	Fig. 2
78205107774	<b>154 MCCM</b>	#6 - 250 MCM	MCB	#6 - 250 MCM	28 <sup>1</sup> / <sub>2</sub> "	43"	4 <sup>5</sup> / <sub>8</sub> "	AW Hub	Fig. 3

MCB - Main Circuit Breaker

# Group Meter Main - With MCC Bypass

100 Amp Horizontal

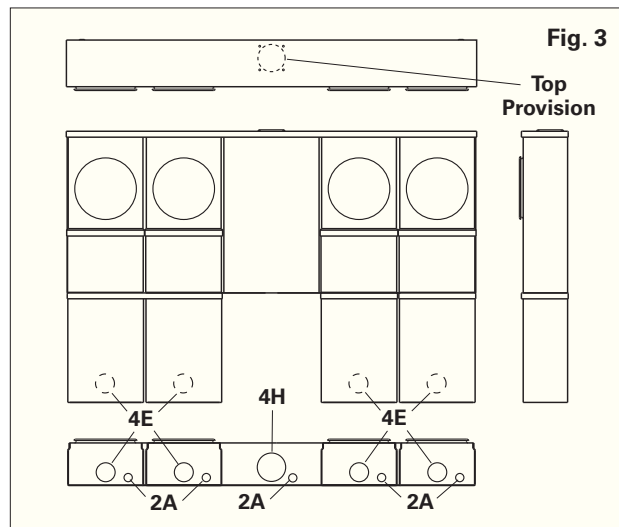
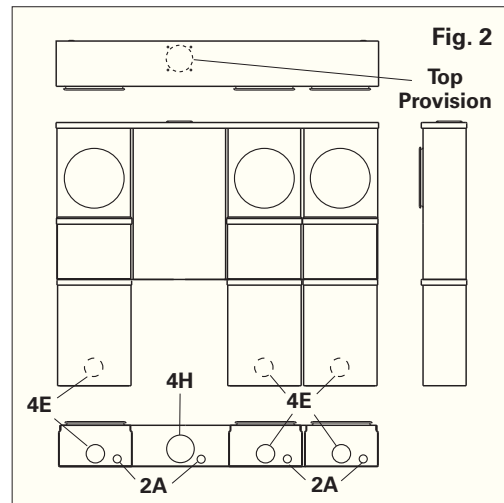
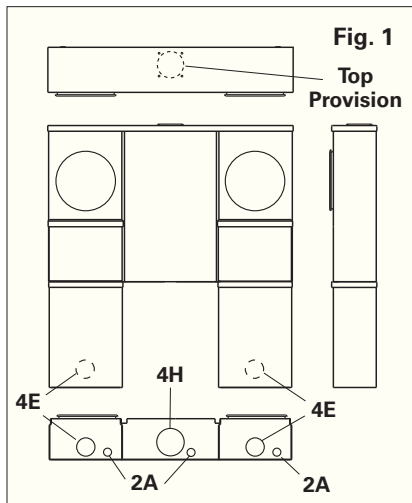
Style #	Suffixes
152 MCCM	SS - Stainless Steel
153 MCCM	
154 MCCM	

### Knockouts - Conduit Sizes

2A = 1/2" - 1/4"  
 4E = 1 1/2" - 1 1/4" - 1" - 3/4"  
 4H = 3" - 2 1/2" - 2" - 1 1/2"  
 Top Provision = See Chart

Multiple Metering

### Knockout Layouts



Data subject to change without notice. Consult local utility for area acceptance. All dimensions are in inches.