

RV Park Equipment
Product Focus

Power Pedestals
Distribution Equipment



Powering Business Worldwide

Eaton offers a complete portfolio of electrical products for your RV project including pedestals, distribution equipment and wire

Power Pedestals

Newport Camp Mate.....2
 Utility Direct Connect.....3
 Powerhouse.....4
 Powerhouse SS.....5
 Park Light.....6
 Firehouse.....7



Newport Camp Mate



Utility Direct Connect



Powerhouse



Powerhouse SS



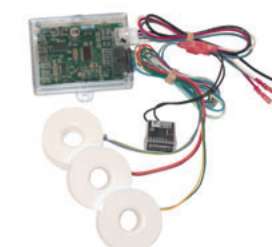
Park Light



Firehouse

Distribution Equipment

LED Lighting8
 Digital Electronic Metering...8
 Surge Protection Device9
 Wire.....9
 Substations.....10
 Panels.....11
 Transformers.....12



Digital Electronic Metering



Substations and Enclosed Transformers



Panels

Note:
 The photos shown here are not to scale.
 Dimensions for these products are available on the pages indicated.

Newport Camp Mate

Power Pedestal



The Newport Camp Mate is our most compact power pedestal with the ability to host a variety of electrical services.



Features

- Heavy Resin Housing with a Two-Part Polyurethane Coating for a UV Resistant, Long-Lasting Finish
- Photocell-Controlled 9 or 14 Watt Compact Fluorescent Twistbulb Light with Amber Lens
- 20A/125V GFI Receptacle
- Designed to Mount on a Post, Wall, or Eaton provided Pedestal
- Mechanical Lug Loop Feed Bus Bars for up to 350 MCM
- NEMA 3R Rating
- Circuit Breaker Protection for All Receptacles

Available Options

- Available with Single, Dual, or Combination of 30A or 50A Receptacles
- Single or Dual Phone, Cable TV, High-Speed Internet Connections
- Digital Electronic Metering
- Wireless Remote Metering for Electric and Water
- Free Standing Stainless Steel Pedestal
- LED Lighting
- Clear, Blue, and Red Lenses
- Direct Burial
- Copper Bus Bar Stud Lugs
- Hose and Cable Brackets
- Single or Dual Steel 1/4 Turn Ball Valves with 3/4" Hose Bibs and Stainless Steel Handles

Dimensions

NEWPORT CAMP MATE		
	IN.	MM
Height:	14.5	368.3
Width:	10.5	266.7
Depth:	10.4	264.16

NEWPORT CAMP MATE ON STAND		
	IN.	MM
Height:	42.2	1071.88
Width:	10.5	266.7
Depth:	10.4	264.16



Faceplate

Utility Direct Connect

Power Pedestal

The Utility Direct Connect provides a 200A meter socket for the utility to land their service entrance conductors through an isolated raceway inside the pedestal. It offers all of the same receptacle options as our other pedestals, in addition to offering the capability to feed an additional building or shed with a 100A main breaker inside the pedestal.



Features

- Photocell-Controlled 14 Watt Compact Fluorescent Twistbulb Light with Amber Lens
- Lockable Weatherproof Doors Which Protect Breakers and Receptacles While In Use
- 20A/125V GFI Receptacle
- Hose and Cable Brackets
- Mechanical Lug Loop Feed Bus Bars for up to 350 MCM
- Backlit Breaker Plate for Easy Receptacle Plug-In at Night
- NEMA 3R Rating
- Circuit Breaker Protection for All Receptacles
- Built-In Meter Socket'
- Heavy Stainless Steel Housing that is Powder-Coated with a Polyester Resin

Available Options

- Wireless Remote Metering for Electric and Water
- Single or Dual Steel 1/4 Turn Ball Valves with 3/4" Hose Bibs and Stainless Steel Handles
- Single or Dual Phone, Cable TV, High-Speed Internet Connections
- LED Lighting
- Clear, Blue, and Red Lenses
- Direct Burial
- Surge Protection Device (SPD) to Protect from Voltage Surges, Spikes or Lightning on the AC Power Line
- Copper Bus Bar Stud Lugs

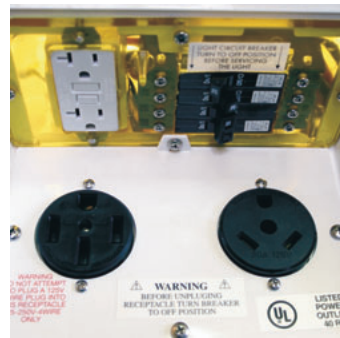
Dimensions

UTILITY DIRECT CONNECT		
	IN.	MM
Height:	50.04	1271
Width:	10.3	261.62
Depth:	10.3	261.62

Powerhouse Power Pedestal



Optional Meter Socket



Backlit Faceplate



Cable and Internet Connections

One of our most popular units, the all-purpose Powerhouse pedestal has a wide range of features. With units in service around the world, this stylish power pedestal is recognized for its practicality and exceptional durability.



Features

- Photocell-Controlled 14 Watt Compact Fluorescent Twistbulb Light with Amber Lens That Provides 360 Degrees of Lighting
- Lockable Weatherproof Doors Which Protect Breakers and Receptacles While In Use
- 20A/125V GFI Receptacle
- Hose and Cable Brackets
- Heavy Resin Housing with a Two-Part Polyurethane Coating for a UV Resistant, Long Lasting Finish
- Mechanical Lug Loop Feed Bus Bars for up to 350 MCM
- "Hingeless" Base Providing Easy Access for Both Installation and Maintenance
- Backlit Breaker Plate for Easy Receptacle Plug-In at Night
- NEMA 3R Rating
- Circuit Breaker Protection for All Receptacles

Available Options

- Digital Electronic Metering
- Wireless Remote Metering for Electric and Water
- Surge Protection Device (SPD) to Protect from Voltage Surges, Spikes or Lightning on the AC Power Line
- Single or Dual Steel 1/4 Turn Ball Valves with 3/4" Hose Bibs and Stainless Steel Handles
- Single or Dual Phone, Cable TV, High-Speed Internet Connections
- Base Cap
- Base Extension
- LED Lighting
- Clear, Blue, and Red Lenses
- Direct Burial
- Copper Bus Bar Stud Lugs
- Built-In Meter Socket

Dimensions

POWERHOUSE		
	IN.	MM
Height:	44	1117.6
Width:	13.75	349.25
Depth:	13.75	349.25



Powerhouse SS Power Pedestal

For long lasting durability, the stainless steel Powerhouse SS pedestal is the most resilient power center offered. This pedestal will meet and exceed all applicable codes and withstand harsh inland and coastal environments.



Features

- Photocell-Controlled 14 Watt Compact Fluorescent Twistbulb Light with Amber Lens That Provides 360 Degrees of Lighting
- Available with Lockable Weatherproof Doors
- 20A/125V GFI Receptacle
- Hose and Cable Brackets
- Heavy Stainless Steel Housing that is Powder-Coated with a Polyester Resin
- Mechanical Lug Loop Feed Bus Bars for up to 350 MCM
- Large Removable Access Panel for Easy Maintenance and Installation
- Backlit Breaker Plate for Easy Receptacle Plug-In at Night
- NEMA 3R Rating
- Circuit Breaker Protection for All Receptacles

Available Options

- Digital Electronic Metering
- Wireless Remote Metering Available for Water and Electricity
- Surge Protection Device (SPD) to Protect from Voltage Surges, Spikes or Lightning on the AC Power Line
- Single or Dual Phone, Cable TV, High-Speed Internet Connections
- Single or Dual 3/4" Hose Bibs with Stainless Steel Handles
- LED Lighting
- Clear, Blue, and Red Lenses
- Direct Burial

Dimensions

POWERHOUSE SS		
	IN.	MM
Height:	44	1117.6
Width:	9.565	242.951
Depth:	9.875	250.825



The Park Light is an elegant and low cost solution to your RV Park. It utilizes the same 360 degree light assembly as the Powerhouse, yet is only 31 inches tall. Thousands of these attractive pedestals are found not only in RV Parks, but also around pools, deck areas, boardwalks and landscape areas.

Features

- Photocell-Controlled 14 Watt Compact Fluorescent Twistbulb Light with Amber Lens That Provides 360 Degrees of Lighting
- Heavy Resin Housing with a Two-Part Polyurethane Coating for a UV Resistant, Long Lasting Finish
- 20A/125V GFI Receptacle
- Mechanical Lug Loop Feed Bus Bars for up to 2/0 Wire
- NEMA 3R Rating
- Circuit Breaker Protection for All Receptacles

Available Options

- Digital Electronic Metering
- Single or Dual Phone, Cable TV, High-Speed Internet Connections
- Single or Dual 1/2" or 3/4" Silcock with Stainless Steel Handles
- LED Lighting
- Clear, Blue, and Red Lenses
- Direct Burial
- Copper Bus Bar Stud Lugs

Dimensions

PARK LIGHT		
	IN.	MM
Height:	31	787.4
Width:	7.5	190.5
Depth:	7.5	190.5



The Firehouse is designed to provide added fire safety to RV parks and campgrounds. The Firehouse provides a convenient location and easy access to fire extinguishers and to an optional life ring when installed around pools and waterfront amenities. In addition, the Firehouse provides area lighting for easy identification during an emergency and for security lighting around the unit. The Firehouse can be equipped with an alarm strobe light and siren which are automatically activated when the fire extinguisher cabinet door is opened or the optional life ring is removed.

Features

- Photocell-Controlled 14 Watt Compact Fluorescent Twistbulb Light with Red Lens That Provides 360 Degrees of Lighting
- 10 lb. ABC Type Fire Extinguisher
- Heavy Stainless Steel Housing that is Powder-Coated with a Polyester Resin
- NEMA 3R Rating

Dimensions

FIREHOUSE		
	IN.	MM
Height:	44	1117.6
Width:	9.875	250.6
Depth:	9.875	250.6

Available Options

- 24" Life Ring
- 20 lb. ABC Type Fire Extinguisher Available
- Alarm Strobe Light & Siren: Automatically Activated When Door Is Open or Optional Life Ring Is Removed
- LED Lighting
- Clear, Blue, and Amber Lenses



LED Lighting



LED Lighting saves electricity over conventional lighting, lasts much longer, and has a positive influence on our environment versus more inefficient mercury-filled fluorescent lighting. Go green and save money with Eaton's LED lighting option.

LED lighting option is UL certified.

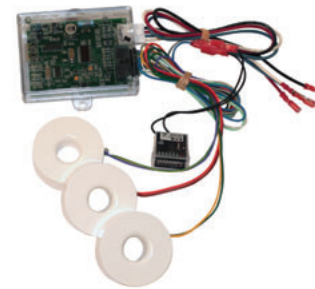
Benefits:

- LED uses significantly less current (amperage) and lasts longer than a fluorescent bulb reducing operating and maintenance costs
- LED does not contain mercury which can create disposal issues

Available Options:

- LED upgrade kit available for pedestals already installed

Digital Electronic Kilowatt Hour Meters



Using the latest technology, Eaton manufactures a line of robust digital electronic sub-meters providing economical energy management solutions. Our product meets the +/- 2% accuracy requirements by ANSI (American National Standards Institute) and is approved by the state of California. (+/- 1% over full range 0-100 amp with .5 to 1 power factor)

The meter drives an electro-mechanical counter with a 12 volt pulse providing readings to the tenth of kilowatt hour. Optional output allows for integration of our wireless

metering system providing remote kilowatt hour readings.

User Friendly Design

Eaton's meter is compact and user friendly. The unit will automatically calibrate to current transformers eliminating the need to ensure proper polarity direction during installation. Simple LEDs, both red and green, indicate the line and load condition making trouble shooting a breeze.

Wireless System

All of our meters are "wireless capable" to allow for wireless meter reading. This technol-

ogy enables the park to get meter readings from one central location rather than visiting every site to read the counters.

Surge Protection Device (SPD)



Surge Protection Devices (SPDs) from Eaton are designed to protect solid state equipment from voltage surges caused by poor power or lightning strikes. As campers have increasingly sophisticated electronics on board their vehicles, the need arises to protect them in the event of a surge. The application of SPDs can mitigate problems with sensitive electronic equipment, keeping the equipment and related processes up and running reliably without disruption or damage due to surge-related events.

Features

- Common voltages and configurations as well as a variety of surge current capacity ratings from 50 through 400 kA provide application flexibility
- Utilizes thermally protected metal oxide varistor (MOV) technology, which provides both high energy capacity and failsafe operation
- 200 kA short circuit current rating (SCCR)

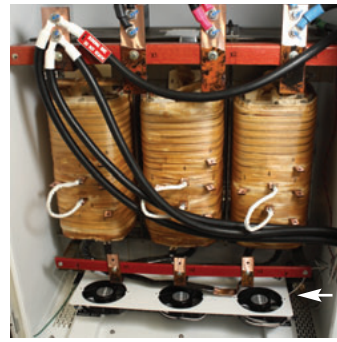


Wire

We can provide all of the wiring necessary to complete any project.

Wire

- THHN/THWN Wire
- XHHW Wire



Fans

The introduction of substations into the recreational vehicle market allows Eaton to be your complete RV park electrical products supplier. Our substations are designed for any coastal or inland environment and are constructed of powder coated stainless steel NEMA 3R housing cabinets. All of our substations use Eaton panels and circuit breakers providing our customers the utmost in circuit protection and quality.

Available Options

- Heavy Stainless Steel Housing that is Powder-Coated with a Polyester Resin
- Single-Phase and Three-Phase Models
- Copper-Wound, Low-Noise Transformer that is Double Insulated and Epoxy Over-Coated
- Up to 1200 Amp Main Circuit Breaker
- Ground Fault Monitoring System
- Surge Protection Device (SPD) to Protect from Voltage Surges, Spikes or Lightning on the AC Power Line
- Up to 1200A Single Phase
- Up to 800A Three Phase

Ventilation

The substation ventilation is designed to optimize air circulation over and around the transformers and through the panel compartment so that the substation operates at lower temperatures.

Substations come equipped with temperature controlled cooling fans for exhausting hot air from the cabinet and solar shield.



One of the many electrical distribution products we offer are Eaton panelboards. All of our panels feature copper buss and bolt-on breakers. Panels can be configured as Main Lugs Only or Main Breaker with branch circuit breakers based on customers' requirements. Our lockable stainless steel enclosures are powder-coated with a polyester resin and NEMA 3R rated.

Standard Features

- Copper Bus Bars
- All Exterior Hardware Is Stainless Steel
- Heavy Stainless Steel Housing that is Powder-Coated with a Polyester Resin
- Main Breaker or Main Lugs up to 1200A
- Branch Breaker 20 to 1200 Amps

Available Options

- Surge Protection Device (SPD) to Protect from Voltage Surges, Spikes or Lightning on the AC Power Line
- Ground Fault Monitoring
- 316L Stainless Steel Enclosure

Single-Phase or Three-Phase

- Up to 1200 Amp Main Circuit Breakers
- Up to 42 Branch Circuit Breakers



Transformers

Distribution Equipment

In order to keep wiring costs down, many RV park design engineers specify higher voltages on long wire runs, requiring transformers to transform that power down to a usable voltage. Eaton offers enclosed transformers designed to withstand harsh inland and coastal environments. Through proper utilization of electrical distribution equipment, the RV park designer is able to reduce the overall electrical infrastructure costs while increasing efficiency.



Single-Phase Transformer

Standard Features

- Copper Terminations
- Copper-Wound, Low-Noise Transformer that is Double Insulated and Epoxy Over-Coated
- All Copper to Copper Connections
- Heavy Stainless Steel Housing that is Powder-Coated with a Polyester Resin

Available Options

- Single-Phase: 50 to 500 KVA
- Three-Phase: 45 to 500 KVA
- 316L Stainless Steel Enclosure

Primary Voltages

- 480WYE 3 ϕ
- 480V 3 ϕ Delta 3-Wire + G
- 480V 1 ϕ 2-Wire + G

Secondary Voltages

- 127/220V 3 ϕ Y 4-Wire
- 120/208V 3 ϕ Y 4-Wire
- 120/240V 1 ϕ 3-Wire

Marina Power Distribution Transformer KVA Availabilities

- Single-Phase: 50, 75, 100, 150, 167.5, 200, 250, 330, 500 KVA
- Three-Phase: 45, 75, 112.5, 150, 225, 300, 500 KVA



Eaton Corporation is a diversified power management company with more than 100 years of experience providing energy-efficient solutions that help our customers effectively manage electrical, hydraulic and mechanical power. With 2011 sales of \$16.0 billion, Eaton is a global technology leader in electrical components, systems and services for power quality, distribution and control; hydraulics components, systems and services for industrial and mobile equipment; aerospace fuel, hydraulics and pneumatic systems for commercial and military use; and truck and automotive drivetrain and powertrain systems for performance, fuel economy and safety. Eaton has approximately 73,000 employees and sells products to customers in more than 150 countries. For more information, visit www.eaton.com.

RV Sales

rvsales@eaton.com

tel: 1-800-723-8009

fax: 757-258-8805

www.rvparkhookups.com