

# Installation instructions

## Newport Camp Mate CS



### **⚠ DANGER**

HAZARDOUS VOLTAGE. MAY CAUSE SEVERE INJURY OR DEATH. TURN OFF MAIN POWER BEFORE OPENING ELECTRICAL ACCESS PANEL

### **⚠ WARNING**

EATON STRONGLY RECOMMENDS THAT THESE PRODUCTS BE INSTALLED BY A QUALIFIED ELECTRICIAN.

### **⚠ WARNING**

TURN OFF OR DISCONNECT THE POWER SUPPLYING THIS EQUIPMENT BEFORE BEGINNING WORK. THIS MAY REQUIRE THAT YOU CONTACT YOUR ELECTRIC UTILITY TO DISCONNECT POWER TO AN EXISTING LOADCENTER. EATON WILL NOT ASSUME RESPONSIBILITY FOR PROPERTY DAMAGE OR PERSONAL INJURY RESULTING FROM MISUSE OF THE INFORMATION IN THIS PUBLICATION.

### **IMPORTANT—INSTALL EQUIPMENT IN CONFORMANCE WITH APPLICABLE CODES**

This product must be installed in accordance with the National Electric Code® (NEC®) or the Canadian Electrical Code (CEC) and any applicable local codes. Before installing equipment, check with the authority having jurisdiction for requirements and information. If you have questions or need assistance contact a qualified electrician.

## Installation

### Step 1: Mounting the unit

**Pad-mount:** Eaton recommends a 22" x 17" concrete pad. Depth will be determined by local codes, 18" is recommended as a minimum. The unit may be secured by expansion bolts or threaded studs using the five 5/8" holes in the base of the pedestal. Slide the power pedestal over the top of the pad mount or pad mount into the base of the pedestal and align the 9 holes (3 per side and 3 on the back). Using a 5/16" wrench install the 10-32x0.25" screws (p/n 11-3113). Tighten until firm, do not exceed 30 inch-lbs. Note: ensure the speed clips are square to prevent contact between the clip and the mount.

**Direct burial:** Excavate an area 10" x 5" around the conduit or cable 24" deep, insert the direct burial mount, ensure the GRADE LEVEL label is aligned with the final grade of the site, ensure the mount is square, backfill with sand or other suitable material. Slide the power pedestal over the top of the direct burial mount and align the 9 holes (3 per side and 3 on the back). Using a 5/16" wrench install the 10-32x0.25" screws (p/n 11-3113). Tighten until firm, do not exceed 30 inch-lbs. Note: ensure the speed clips are square to prevent contact between the clip and the mount.

### Step 2: Connecting power supply to the terminals

To access the terminals, remove the 6 10-32x0.5" screws (p/n 11-9118) on the electrical access cover using a Philips head screwdriver and remove the cover. Insert line wires into Line 1, Line 2 (if applicable), Neutral, and Ground. Using an Allen-wrench (hex key) tighten the screw to 150 inch-lbs. Reinstall the electrical access cover and reinstall the 6 10-32x0.5" screws (p/n 11-9118), tighten until firm do not exceed 30 inch-lbs.

### Step 3: Phone / cable TV access

To access the backside of the phone / cable TV jacks, remove the three screws at the top of the lens and the two screws in the two top corners of the breaker / phone / TV faceplate. Lift the receptacle plate up and forward to access the back of the phone / cable TV jacks. Connect the jacks, place the faceplate back into position, and secure it with the five screws.

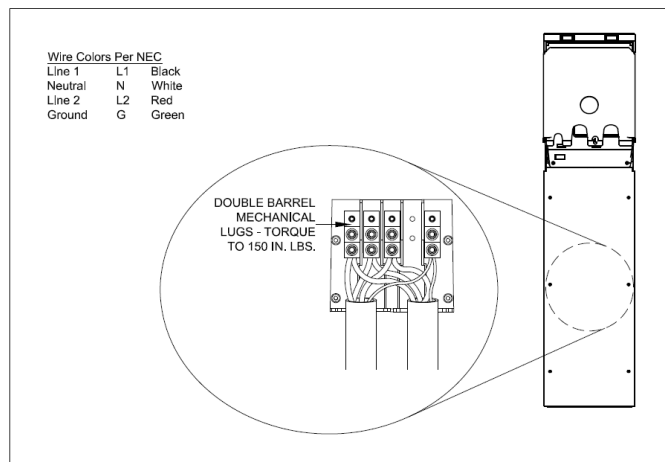


Figure 1. Wiring Diagram

#### Step 4: Water

Remove the 4 pre-installed 10-32 x 1/4" screws (p/n 11-3113) on the back of the pedestal using a 5/16" wrench. These screws are approximately 6.5" (2) and 15" (2) above the bottom of the pedestal located on the rear. Align the water assembly mounting locations with the vacated holes and reinstall the screws. Tighten until firm, do not exceed 30 inch-lbs. Note: some compression on the sides may be necessary due to bowing of the water box when not under tension.

#### Step 5: Energization

Prior to energization:

Ensure pedestals are securely mounted

Ensure all covers are in place and secured

Review equipment ratings and confirm the service and application of the equipment are suitable

Verify equipment requiring grounding is connected to an insulated equipment grounding conductor included with feeders and branch circuits

Verify upstream protective devices do not exceed the capacity of the pedestal or conductors

Verify the expected fault current does not exceed that of the pedestal

Visually inspect polarity of supply cables and connections

Once the equipment is energized check for the following:

Open ground

Open neutral

Open line or phase

Reverse ground and phase or leg

Reverse neutral and phase or leg

Phase rotation (if applicable)

Verify GFCI operation using the built-in test function

To test the lighting assembly, follow Step 3 under Maintenance.

### Maintenance

To keep the warranty effective the following preventative maintenance procedures are required.

#### Step 1: Exterior maintenance

To remove dirt and grime use a mild solution of dishwashing

detergent at approximately one teaspoon per gallon of warm water.

If insects are problematic follow up with a water-based insect barrier around the base of the unit.

DO NOT use a petroleum-based insect spray.

DO NOT use flammable gases near electrical equipment.

DO NOT use any solvent or corrosion inhibiting products on any part of the unit. This can cause serious stress cracking of the engineered resins and will void warranty.

#### Step 2: Interior maintenance

Before attempting the following maintenance procedures, turn off power to the unit and place it in an electrically safe work condition.

**Note:** The circuit breakers on the unit DO NOT deenergize the unit.

#### Exposing the terminal assembly

Remove the 6 screws on the electrical access cover to access the terminals.

#### Maintenance of the terminal assembly

The terminals and electrical connections should be examined for excessive heating and corrosion. If potentially faulty or loose joints are found, they should be tightened or replaced by a qualified electrician.

If there appears to be minor corrosion around the copper to aluminum connection, remove the copper wire and clean the wire and terminal, coat the wire with an anti-corrosion agent designed for use with electrical connections, and retighten the assembly.

Ensure the set screw is torqued to 150 inch-lbs. If the set screw cannot be tightened or loosened, replace the lug.

#### Receptacles and breakers

Receptacles and breakers should be examined annually, and if any sign of heating is evident, the receptacles or breakers should be replaced.

#### GFCI Receptacles

GFCI receptacles should be verified operational monthly using the "TEST" pushbutton only, other methods will void warranty.

#### Step 3: Lighting assembly

To test the lighting assembly, cover the photocell with a piece of black tape or similar light blocking material. In approximately 30 to 60 seconds the light should illuminate. If this does not occur, the following items should be checked: photocell, fuse, disconnects, and bulb.

#### Step 4: Winterizing

The water system should be purged with air and the ball valve should be opened and closed after the system has been drained. This will remove the slug of water that remains in the ball. No other winterizing maintenance is required.

## Operation

### Step 1: Connect power cord to pedestal

With the breakers off, insert one end of the power cord into the receptacle of the load being supplied and the other into the pedestal. Ensure plugs and connectors are fully inserted.

### Step 2: Turn breaker ON

With both connections secured, turn on the breaker. Check for polarity and voltage.

## Parts

Save 10% When You Buy Parts and Pedestals Online! Please visit [www.eaton.com](http://www.eaton.com) for a full parts listing. To request a parts handbook:

- Call 1-800-723-8009 or
- E-mail [marinasales@eaton.com](mailto:marinasales@eaton.com)

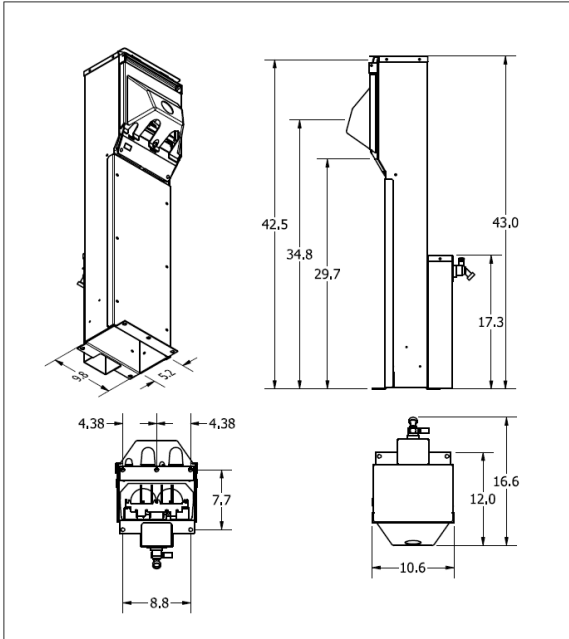


Figure 2. Dimensions in Inches main unit

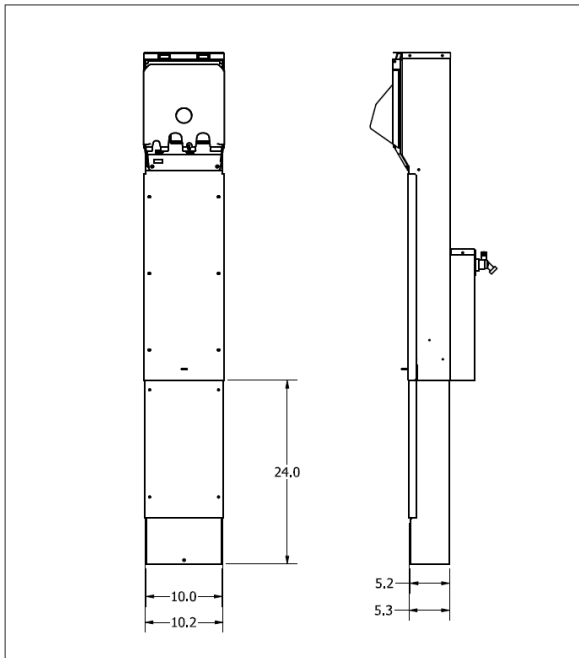


Figure 3. Dimensions in Inches Direct Burial Extension

## Eaton Marina Power and Lighting warranty information

### I. Scope

This is an addendum to Eaton's Selling Policy 25-000, modifying the warranty article only. All other terms and conditions are in accordance with Selling Policy 25-000. Warranty for internal components for Eaton Marina Power and Lighting products: Eaton Marina Power and Lighting internal component products are covered under the warranty set forth in Seller's Selling Policy 25-000.

### II. Warranty period

Seller warrants that the housings of all pedestals manufactured by it ("housings") will conform to Seller's applicable specifications and be free from failure due to defects in workmanship and material for a period of one (1) year from the date of first sale or delivery, whichever is earlier. Except for the housings warranty provided herein, Seller does not provide any warranty on the pedestal or any component therein. The meters in the pedestals are manufactured by EZMeter ("EZMeter") and come with a separate five (5) year limited warranty from EZMeter against defects in workmanship and material in the meters. Seller does not warrant the meters, expressly disclaims any obligation under the EZMeter limited warranty on the meters and does not administer claims under the EZMeter limited warranty. Any issues regarding the EZMeter meters should be addressed directly to EZMeter.

### III. Applicability of warranty

In the event a meter fails to comply with the foregoing warranty, seller will, at its option, either (a) repair or replace the defective meter, or defective part or component thereof, F.O.B. Seller's facility freight prepaid, or (b) credit Buyer for the purchase price of the Product. All warranty claims for meters shall be made in writing. Seller requires all non-conforming products be returned at Seller's expense for evaluation unless specifically stated otherwise in writing by Seller. Remote metering: Seller does not

cover warranty for remote metering software or service. All warranty claims for remote metering software and/or service must be directed to the respective manufacturer/provider. Seller warrants only transmitters/transponder hardware and the install in its pedestals according to the warranty set forth in Seller's Selling Policy 25-000. This warranty does not cover failure or damage due to storage, installation, operation, or maintenance not in conformance with Seller's recommendations and industry-standard practice or due to accident, misuse, overvoltage, submersion, abuse, or negligence. This warranty does not cover reimbursement for labor, gaining access, removal, installation, temporary power, or any other expenses, which may be incurred in connection with repair or replacement. This warranty is void if factory seal is broken. This warranty does not cover wire harnesses, current transformers (CTs) and counters. These components are covered under Selling Policy 25-000. This warranty does not apply to equipment not manufactured by Seller. Seller limits itself to extending the same warranty it receives from the supplier.

### IV. Limitation of warranty, remedies, and liability

In the event the housing fails to comply with the foregoing warranty, Seller will, at its option, either (a) repair or replace the defective Housing, or defective part or component thereof, F.O.B. Seller's facility freight prepaid, or (b) credit Buyer for the purchase price of the Product. All warranty claims for Housings shall be made in writing. Seller requires all non-conforming products be returned at Seller's expense for evaluation unless specifically stated otherwise in writing by Seller. This warranty does not cover failure or damage due to shipping, storage, installation, operation, or maintenance not in conformance with Seller's recommendations and industry standard practice or due to accident, misuse, overvoltage, submersion, abuse, or negligence. This warranty does not cover reimbursement for labor, gaining access, removal, installation, temporary power, or any other expenses, which may be incurred in connection with repair or replacement. Paint touch-up maintenance may be required over the life of the product and is the sole responsibility of the Buyer. This warranty does not apply to equipment not manufactured by Seller. Seller limits itself to extending the same warranty it receives from its suppliers.

**Eaton Corporation**  
**Marina Power and Light**  
149 Warwick Court  
Williamsburg, VA 23185  
Unites States  
877/ETN-CARE (877-386-2273)  
Eaton.com

©2022 Eaton Corporation  
All Rights Reserved  
Printed in USA  
Publication No. IL051844  
Part No. PUB-51844  
April 2022

Eaton is a registered trademark of Eaton Corporation.

All other trademarks are the property of their respective owners.