

# Air Conditioner Disconnects

## Product Focus



**ACD Three-Phase 600V**  
**NEW DESIGN!**  
**NEW RATINGS!**

- CSA approved to CEC code for manual motor disconnects and marked "suitable for motor disconnects."
- 65kA short circuit withstand rating.<sup>①</sup>
- Welded contact protection. Disconnect will not turn off unless contacts are fully open.
- For ease of wiring, DIN rail mounted 3 pole fully enclosed, padlockable switch.
- Captive terminals c/w phase barriers - eliminates possibility of phase to phase shorting.
- <sup>c</sup>CSA<sub>US</sub> certified (approved by CSA to CSA and UL standards).
- Rugged 3R outdoor rated enclosure, padlockable

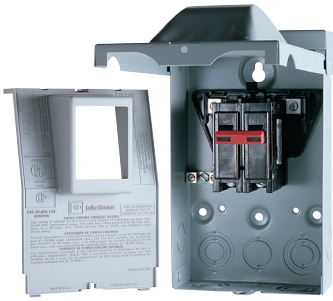
### ACD Three-Phase 600V

Main Ampere Rating	Maximum HP Rating PHASE	480V			600V			Wire Size Range Cu/Al 60° C or 75° C	Short Circuit Withstand <sup>①</sup> Rating with J Fuse protection on line side	Catalogue Number
		240V	480V	600V	480V	600V	600V			
30A	1ph	3	7.5	10	#14-4			10kA - 60A J fuse max 65kA - 30A J fuse max	<b>3GAC361NFB</b>	
	3ph	7.5	15	20						
40A	1ph	3	7.5	10	#14-4			10kA - 60A J fuse max 65kA - 30A J fuse max	<b>3GAC3640NFB</b>	
	3ph	7.5	20	25						
60A	1ph	7.5	15	15	#14-1			50kA - 100A J fuse max 65kA - 60A J fuse max	<b>3GAC362NFB</b>	
	3ph	15	30	30						
80A	1ph	10	20	20	#14-1			50kA - 100A J fuse max 65kA - 60A J fuse max	<b>3GAC3680NFB</b>	
	3ph	20	40	40						



Powering Business Worldwide

Celebrating  
**100** YEARS  
 Ideals that Endure



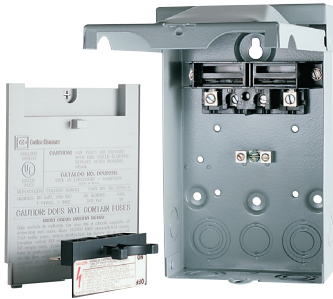
DPB222R

**ACD Moulded Case Switch - 240V max. single phase**

- Rugged moulded case construction in a disconnect switch that looks like a circuit breaker but operates like an ordinary household light switch.
- Plug-in moulded case switch eliminates the need for pullout handles.
- No need for replacement pullout handles due to loss or theft.
- Break resistant “snap in cover” eliminates need for screws.
- UL listed and CSA certified.
- 10kA short circuit withstand @ 240V max. when protected by 60A max fuse or circuit breaker.

**1 Phase, 2 Wire 240V AC**

Main Ampere Rating	Maximum HP Rating		Wire Size Range Cu/Al 60° C or 75° C	Catalogue Number
	120V	240V		
60A	—	10	#14-3	DPB222R



3GAC222NF

**ACD Non-Fused Pullouts - 240V max. single phase**

- ON/OFF control provided by pullout handle.
- Pullout handle can be conveniently stored in the compartment in the off position, helping to prevent the handle from being misplaced.
- Protective shield cannot be removed until the pullout is removed, disconnecting the power.
- Break resistant “snap in cover” eliminates need for screws.
- UL listed.
- 10kA short circuit withstand @ 240V max. when protected by 60A max fuse or circuit breaker.

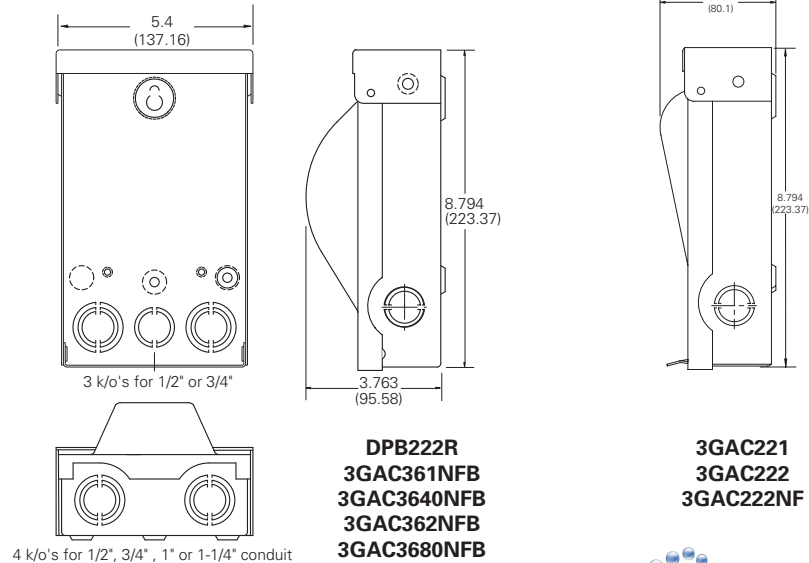
**1 PHASE, 2 WIRE 240V AC**

Main Ampere Rating	Maximum HP Rating		Wire Size Range Cu/Al 60° C or 75° C	Catalogue Number
	120V	240V		
60A	3	10	#14-3	3GAC222NF

**Fused Pullout 30, 60 Amp 1Ph 2W - 240V AC available, Cat. No 3GAC221 (30A) 3GAC222 (60A).**

**Beyond Air Conditioning**

Eaton AC Disconnects also meet CEC/NEC disconnect requirements for other Residential single-phase applications including heat pumps, swimming pools, spas, whirlpools, and sump-pumps. For Commercial Disconnect requirements 3 phase 600V max., Manual Motor Disconnect meets CEC rule 28-602(3)(B) “Suitable for motor Disconnects.”



- DPB222R
- 3GAC361NFB
- 3GAC3640NFB
- 3GAC362NFB
- 3GAC3680NFB

- 3GAC221
- 3GAC222
- 3GAC222NF

Proud Sponsor of



PowerChain Management™ Solutions



**Eaton**  
5050 Mainway  
Burlington, ON L7L 5Z1  
Canada  
1-800-268-3578  
EatonCanada.ca

© 2010 Eaton Corporation  
All Rights Reserved  
Printed in Canada  
Publication No. BR00700002K  
January 2011

PowerChain Management is a registered trademark of Eaton Corporation.

All other trademarks are property of their respective owners.