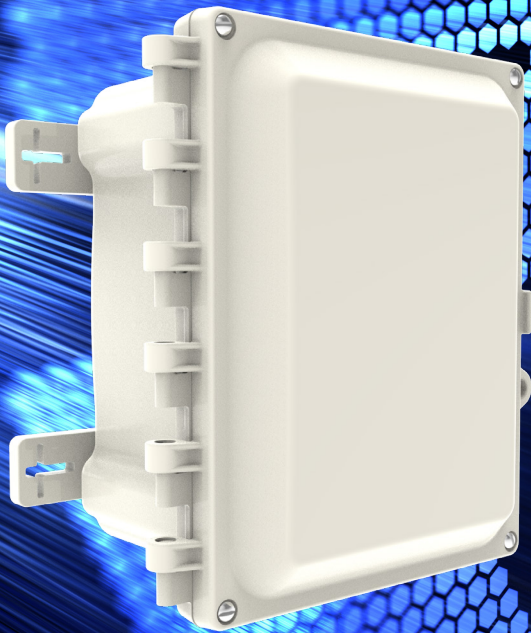


CROUSE-HINDS
SERIES

CHG harsh & hazardous area gateway



Safe. Reliable. Connected.

EATON

Powering Business Worldwide

Eaton's Crouse-Hinds series

CHG harsh & hazardous area gateway

Remote monitoring, increase operational efficiency through actionable insights derived from your data.

CHG harsh and hazardous area gateway assemblies and subscription service provide a wireless connection to Eaton's Brightlayer Industrial (BLI) digital platform.

It is compatible with our Crouse-Hinds series Smart EBMX explosionproof enclosures, ACE DG1 explosionproof variable frequency drives and SCSR portable combination starters. The gateway can be purchased in conjunction with these solutions or retrofitted into an existing install base.

Keep employees safe

Remote monitoring capabilities help minimize the time employees spend in harsh and hazardous areas to monitor and troubleshoot equipment.

Reduce downtime

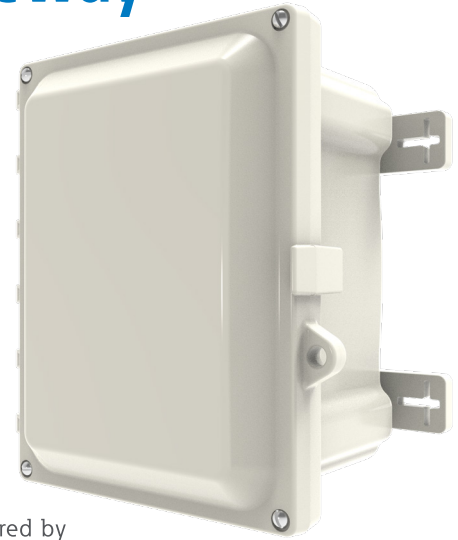
Anytime, anywhere access to real-time alerts, alarms, and trend data to identify and alleviate variables that impact performance before they cause downtime.

Compliance alignment

Actively monitor critical parameters to help ensure your systems adhere to policies, codes and standards.

Subscription includes Brightlayer Industrial Remote Monitoring

With the purchase of a 1-year subscription, the CHG harsh and hazardous area gateway allows for connection to Eaton's Brightlayer on your desktop and mobile device.



Powered by

Brightlayer



Learn more about Brightlayer

Scan QR code or go to: eaton.com/Brightlayer



Ease of installation

Includes terminal block for easy wire termination for up to six devices.



Secure

Eaton's Secure Development Lifecycle helps ensure platform cybersecurity by the application of technical standards, tools and processes.

Schematic label

Gateway

Antenna

Power supply

Polycarbonate enclosure

Breakout board

Breather drain

Meyers hub

Terminal block

Diagram Labels: ANTENNA (CELLULAR, GPS), GATEWAY, POWER CONNECTION, BREAKOUT BOARD (A-, B+, GND, 1, 2, 5), INCOMING DEVICE(S) COMMUNICATION WIRING, TORQUES, WIRE SIZE, POWER SUPPLY, CELLULAR, GPS, POWER SUPPLY, NEUTRAL LINE, GREEN, GREEN (TO HUBS), INCOMING POWER & GROUND WIRING, DRAIN WIRE(S), INCOMING POWER & GROUND WIRING, BROWN, GREEN, ORANGE WIRES CAPPED OFF, BLACK, YELLOW, RED, BLUE, ORANGE, WHITE, A-, B+, GND, 1, 2, 5.

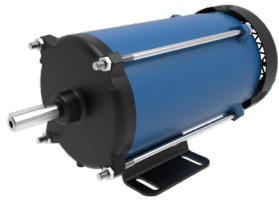
TORQUES	
GROUND SCREWS	30 IN-LBS (3.4 N-M)
HUBS	25 FT-LBS (34 N-M)
COVER SCREWS	15 IN-LBS (1.7 N-M)
ANTENNA	10 IN-LBS (1.1 N-M)
BREAKOUT BOARD TERMINALS	2 IN-LBS (0.23 N-M)
POWER SUPPLY TERMINALS	5 IN-LBS (0.56 N-M)
TERMINAL BLOCKS	14 IN-LBS (1.8 N-M)

WIRE SIZE	
POWER SUPPLY	12-18 AWG (2.5-1.0 MM ²)
TERMINAL BLOCKS (COMMUNICATION)	18-22 AWG (1.0-0.34 MM ²)
TERMINAL BLOCKS (GROUND)	14-18 AWG (1.5-1.0 MM ²)
BREAKOUT BOARD	16-24 AWG (1.5-0.25 MM ²)

0209988 REV. 1

How it works

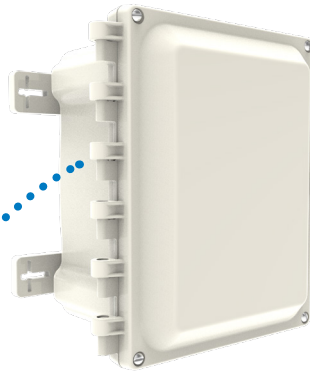
The CHG gateway assembly enables the simple and secure connection of your assets to Eaton's Brightlayer Industrial Remote Monitoring application. Improve uptime and prevent equipment damage with data captured from your installed equipment. Get the actionable insights and alerts you need on a single screen, anywhere, anytime, on any device.



Critical system in harsh and hazardous area



Eaton digitally enabled product
(EBMX explosionproof motor control shown)



Crouse-Hinds series CHG gateway



Equipment data and insights



Certifications and specifications

Hazardous

NEC/CEC standards:

- Class I, Division 2, Groups A, B, C, D
- Class I, Zone 2, IIC
- Class II, Division 1, Groups F, G
- Class III
- Zone 22
- Type 4X; IP66
- T-Code: T4

UL standards:

- UL61010-1
- UL121201
- UL50E
- File E499908

CSA standard:

- CSA C22.2 No. 61010-1
- CSA C22.2 No. 213-17
- CSA C22.2 No. 94.2

Industrial/non-hazardous

NEC/CEC standards:

- Type 4X; IP66
- T-Code: T4

UL standards:

- UL61010-1
- UL50E
- File E529455

CSA standard:

- CSA C22.2 No. 61010-1
- CSA C22.2 No. 94.2

Additional specifications

Communication protocol:

- Modbus RTU (Remote Terminal Unit) protocol utilizing the RS-485 serial interface.

Temperature range

- -20°C to +47°C

Weight

- Standard configuration: 5 lbs.
- Additional entries configuration: 6 lbs.

Cellular carriers supported

- AT&T

Electrical ratings

- Voltage: 100-240 VAC
- Input amps: 0.064 A Max
- Frequency: 50/60 Hz

Ordering information

Part number	Description
BLI-CHG-D2-S	Hazardous rated gateway, standard configuration (1/2" Myers hubs, Qty=2)
BLI-CHG-D2-S-6	Hazardous rated gateway, additional entries configuration (1/2" Myers hubs, Qty=7)
BLI-CHG-4X-S	Non-hazardous rated gateway, standard configuration (1/2" Myers hubs, Qty=2)
BLI-CHG-4X-S-6	Non-hazardous rated gateway, additional entries configuration (1/2" Myers hubs, Qty=7)
BLI-CH-PWR-ESS	1 year subscription to Brightlayer Industrial Remote Monitoring

Technical support

CHG Gateway Hardware Support *(General inquiry, installation, components, subscription):*

(866) 764-5454
crousecustomerctr@eaton.com

Brightlayer Industrial Application Support *(Interface/gateway configuration and updates):*

877-ETN-CARE
Option 2, Option 9, Option 2

BLsupport@eaton.com

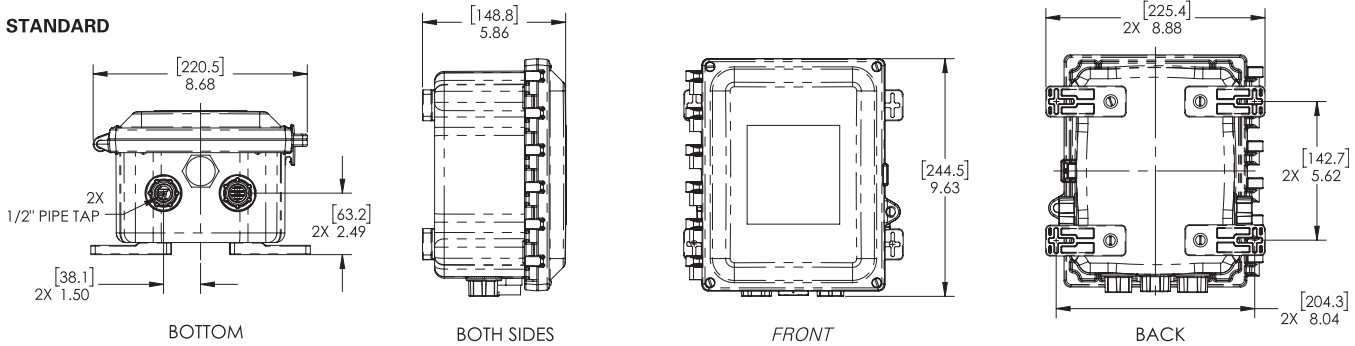
Learn more about Brightlayer

Scan QR code or go to:
eaton.com/Brightlayer

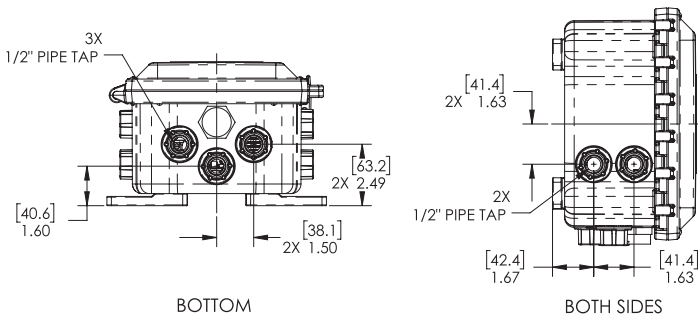


Dimensions:

STANDARD



ADDITIONAL ENTRIES



PRIMARY DIMENSIONS
ARE IN INCHES.
DIMENSIONS IN [] ARE
IN MILLIMETERS.

U.S. (global headquarters): Eaton's Crouse-Hinds business

1201 Wolf Street
Syracuse, NY 13208

(866) 764-5454
FAX: (315) 477-5179
FAX Orders Only:
(866) 653-0640

crousecustomerctr@eaton.com

Eaton's B-Line business

509 West Monroe Street
Highland, IL 62249

800-851-7415
FAX: 618-654-1917

Eaton.com/b-lineseries

IEC Electrical

(CEAG products)

49 (0) 6271 806-500
FAX: 49 (0) 6271 806-476

Info-ex@eaton.com

Airport Lighting

866-764-5454

CrouseCustomerCTR@Eaton.com

Mexico/Latin America/Caribbean

52-555-804-4000
FAX: 52-555-804-4020

ventascentromex@eaton.com

Haz Area Communications

(MEDC, Hernis, Oxalis, FHF Sonix)

44 (0) 1623 444400
FAX: 44 (0) 1623 444531

MEDCadmin@Eaton.com

Canada

Toll Free: 800-265-0502
FAX: (800) 263-9504
FAX Orders only: (866) 653-0645

China

86-21-2899-3600
FAX: 86-21-2899-4055

echsales@eaton.com

Process instrumentation

(MTL products)

44 (0) 1582 723633
FAX: 44 (0) 1582 422283

enquiry@mtl-inst.com

Eaton Middle East

9714-8066100
FAX: 9714-8894813

CHBLME@eaton.com

Australia

61-2-8787-2777
FAX: 61-2-9609-2342

crousehindsanz@eaton.com

For more information:

If further assistance is required, please contact an authorized Eaton Distributor, Sales Office, or Customer Service Department.

Eaton

1000 Eaton Boulevard
Cleveland, OH 44122
United States
Eaton.com

© 2023 Eaton
All Rights Reserved
Printed in USA
Publication No. BR401013EN
May 2023

Eaton is a registered trademark.

All other trademarks are property
of their respective owners.

Follow us on social media to get the
latest product and support information.

