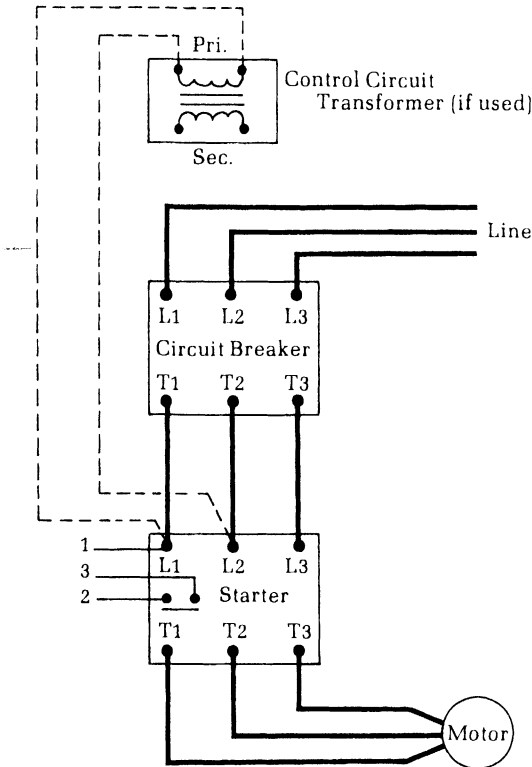


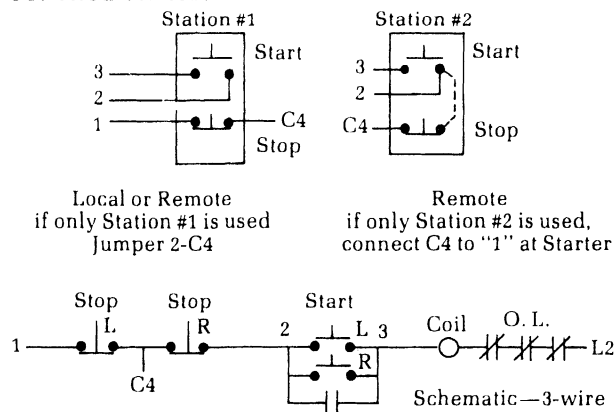


POWER WIRING

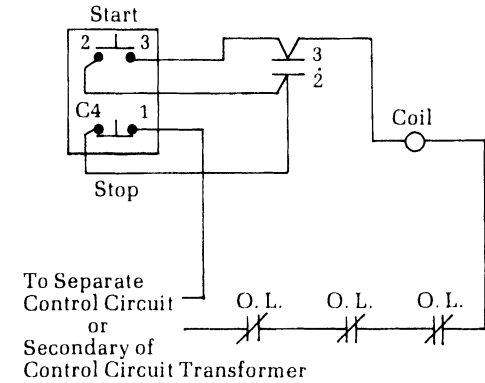


Note: For Starter only, omit wiring from Circuit Breaker to Starter and wire line direct to L1, L2, and L3 of Starter.

CONTROL STATION CONNECTIONS

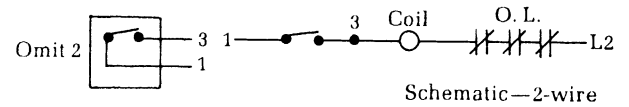


CONNECTIONS FOR SEPARATE CONTROL CIRCUIT OR CONTROL CIRCUIT TRANSFORMER

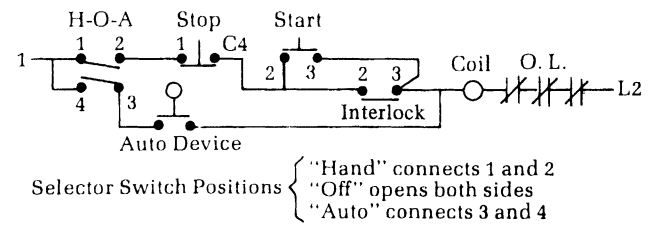


Note: If Starter is wired with a Jumper between L2 and Overload Relay Contact, this Jumper must be removed.

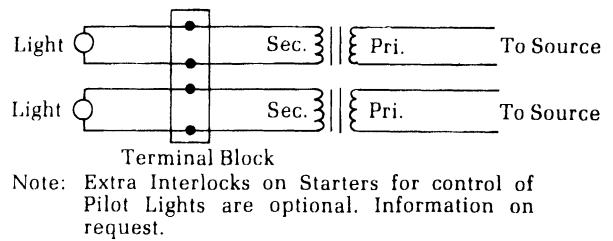
TWO-WIRE CONTROL—MAINTAINED CONTACT



HAND-OFF-AUTO SELECTOR SWITCH WITH START-STOP STATION



PILOT LIGHTS WITH TRANSFORMERS



All statements, technical information and recommendations contained herein are based on information and tests we believe to be reliable. The accuracy or completeness thereof are not guaranteed. In accordance with Crouse-Hinds

"Terms and Conditions of Sale", and since conditions of use are outside our control, the purchaser should determine the suitability of the product for his intended use and assumes all risk and liability whatsoever in connection herewith.

This instruction sheet should be retained for future use in maintenance.