

# FLEXITITE™ HAZARDOUS LOCATION PENDANT PUSHBUTTON STATIONS

Installation & Maintenance Information

IF 1327

SAVE THESE INSTRUCTIONS FOR FUTURE REFERENCE

## APPLICATION

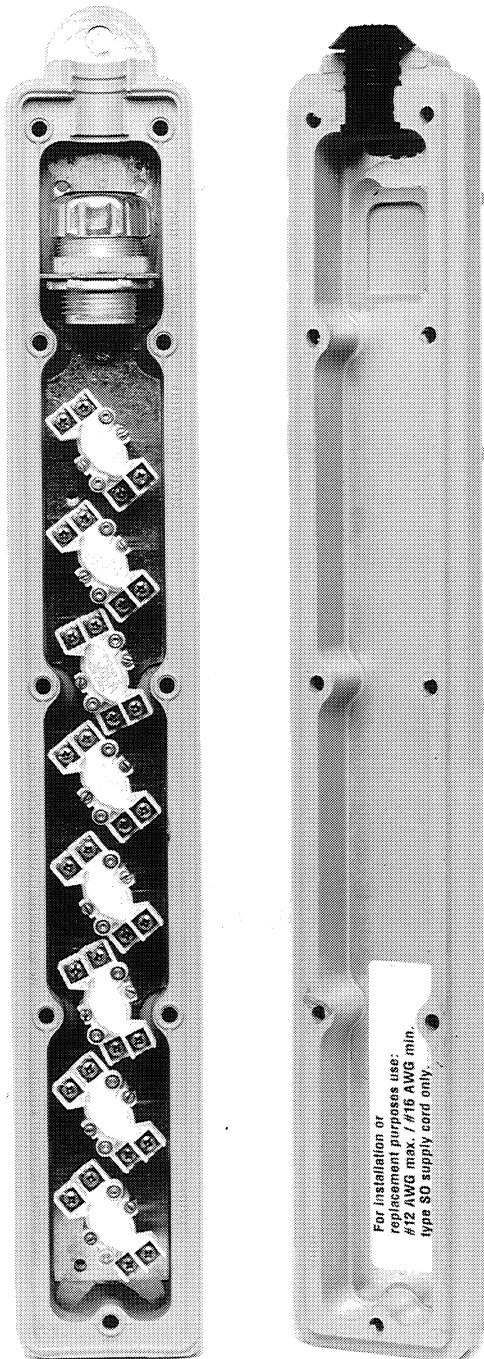
Flexitite attachable pendant pushbuttons are used:

For safe, multi-function motor circuit control of:

- Hoists
- Cranes
- Machine Tools
- Electromagnets

Hazardous (Class I, Division 2, Groups B,C,D and Class II, Division 2, Groups F,G) control environments requiring from 2 to 8 functions

Where washdowns are necessary - in damp, wet, dirty, or corrosive locations.



## INSTALLATION

**CAUTION**  
ASSEMBLY SHOULD BE PERFORMED BY A  
QUALIFIED MAINTENANCE ELECTRICIAN OR  
FACTORY ELECTRICAL ASSEMBLY PERSONNEL

1. **For 2, 4, 6 or 8 Pushbutton Stations:** Mount switches to bracket using the captive screws contained within the switches. See Figure 1.
2. **For 4, 6 or 8 Pushbutton Stations:** Select proper strain relief connector from Table 1. Insert connector into large hole in bracket. Apply electrical locknut and tighten securely. See Figure 1. **For 2 Pushbutton Stations:** Select proper strain relief connector from Table 1. Apply pipe thread sealant to strain relief connector and fully screw into bushing until tight. See Figure 2.
3. Remove jacket from pendant end of type SO cable for a distance of (exercise care to ensure conductor insulation is not cut):
 

19" for 8 button	}	Cable Conductor Size	
15" for 6 button			12 AWG Max.
12" for 4 button			16 AWG Min.
7" for 2 button			
4. **For 4, 6 or 8 Pushbutton Stations:** Select proper grommet from Table 1. Slide grommet, tapered end first, onto cable. Position blunt end of grommet 1<sup>1</sup>/<sub>8</sub>" from jacket end. If lubricant is needed, use alcohol. Caution: Do not use a lubricant such as silicone which will reduce the gripping action of the strain relief connector. **For 2 Pushbutton Stations:** Select a cable length that will position pendant switch for comfortable operator use.

5. **For 4, 6 or 8 Pushbutton Stations:** Mount bracket to pendant front half using the five #10 pan head screws and lockwashers. See Figure 1. **For 2 Pushbutton Stations:** Mount switches with mounting plate to front enclosure using the two #10 pan head screws and lockwashers. See Figure 2.
6. Insert cable through strain relief connector. Securely tighten compression nut, while positioning grommet in top half **for 4, 6 or 8 Pushbutton Stations**. See Figure 1. **For 2 Pushbutton Stations**, position end of jacket so that it is between points A and B shown on Figure 2. Securely tighten compression nut to retain cable position and create a seal.
7. Cut ground wire to appropriate length, allowing at least 1" of conductor slack: Skin approximately  $\frac{5}{16}$ ". Crimp into terminal and secure to bracket using green colored screw and cup washer.
8. Cut to appropriate lengths, skin approximately  $\frac{1}{2}$ " and attach individual conductors to switch terminals as required. Allowing at least  $\frac{1}{2}$ " of conductor slack. Not more than two wires are to be connected to any switch terminal.
9. Arrange wires neatly within the inner cavities of the pendant halves. Use cable ties as necessary to neatly harness wires. Check for at least  $\frac{1}{2}$ " of conductor slack for each conductor. Check for absence of stray

conductor strands.

10. Invert back half onto front half, ensuring that all wires are within the inner cavities and clear of the bead sealing surfaces. Securely fasten the halves using the shoulder screws provided.
11. Snap desired indicator plates in position in face of front half.
12. Secure a strain relief member to the tab extending from top of pendant assembly. Strain relief member should be 2" shorter than electrical cable to ensure slack in cable at all times. Strain relief must be strong enough to support a pull on the pendant of at least 150 pounds.
13. Verify proper connections and operation before applying power .
14. Apply power and verify proper response for each push button function.

**WARNING**  
FAILURE TO FOLLOW ASSEMBLY INSTRUCTIONS  
COULD RESULT IN SERIOUS BODILY INJURY  
AND/OR PROPERTY DAMAGE.

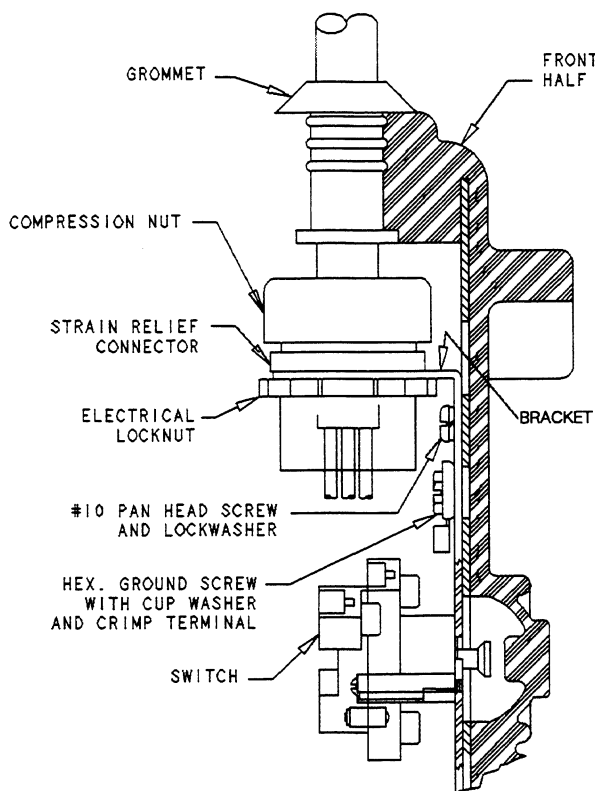


Figure 1  
4, 6 & 8 Pushbutton

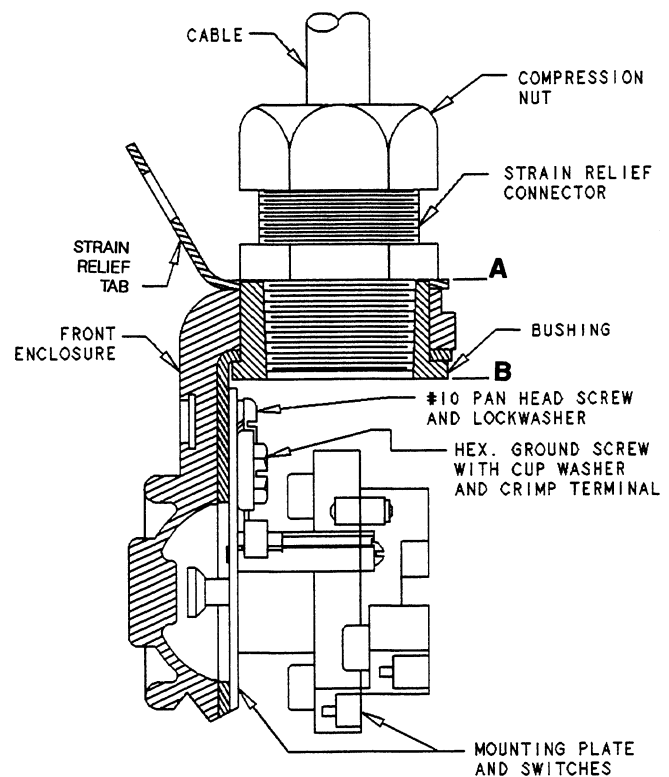


Figure 2  
2 Pushbutton

## MAINTENANCE

### CAUTION

IF REPLACING SWITCH, DO NOT USE SWITCHES FROM OTHER CROUSE-HINDS CONTROL STATIONS. ORDER A NEW ESWP126 SWITCH FROM FACTORY.

- Periodically examine pendant assembly for evidence of material deterioration, noting especially any damage to buttons. Also examine for proper strain relief, damage to cable and button identification. For high usage, examinations should be performed monthly. For infrequent usage, examinations should be performed at least annually. Replace suspect components.

### Replacement Parts:

Switch: Part No. ESWP126  
 Front Half: 2-button: Part No. 3344185  
 4-button: Part No. 3345848-2  
 6-button: Part No. 3335845-2  
 8-button: Part No. 3344153-1

### Repair Kit:

2-button: Part No. D2RX8635-210  
 4-button: Part No. D2RX8635-410  
 6-button: Part No. D2RX8635-610  
 8-button: Part No. D2RX8635-810

### Repair Kits Contain:

Cable ties                      Strain Relief Connectors  
 Shoulder Screws              Ground Screw and Cup Washers  
 Indicator Plates                #10 Pan Head Screws &  
 Instruction Bulletins        Lockwashers  
 Crimp Terminal

4, 6 & 8 button only: Grommets and electrical locknut

TABLE 1

Pendant Station	GROMMET SELECTION			STRAIN RELIEF CONNECTOR SELECTION	
	Cable O. D. Range	Grommet	Grommet I.D.	Cable O.D. Range	Connector
<b>2 Button</b>	Not Applicable	Not Applicable	Not Applicable	.310 - .560 .500 - .750	Small Large
<b>4 Button</b>	.500 - .615 .615 - .765	Small Large	0.49 0.64	.310 - .560 .500 - .750	Small Large
<b>6 Button</b>	.590 - .700 .700 - .810	Small Large	0.60 0.70	.500 - .750 .700 - .950	Small Large
<b>8 Button</b>	.590 - .730 .705 - .790 .790 - .920	Small Medium Large	0.58 0.69 0.78	.500 - .750 .700 - .950	Small Large

### CAUTION:

- Verify power is OFF before beginning any assembly or disassembly.
- Do not exceed rated voltage and current of the Flexitite Pushbutton Station.
- Do not use in Class I, Division 1 locations or in Class II or III locations.
- Do not continue to operate pushbutton station if buttons become cracked, cut or punctured.
- Operate within temperature extremes of -25° C to +90°C.
- Not for use with low signal level.

### WIRING SUGGESTION

- A method for electrically interlocking switches is shown in Figure 3. Only two stations illustrated .

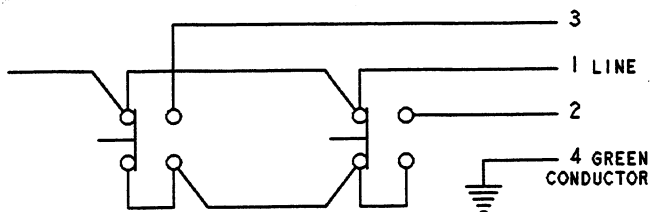


Figure 3

---

*All statements, technical information and recommendations contained herein are based on information and tests we believe to be reliable. The accuracy or completeness thereof are not guaranteed. In accordance with Crouse-Hinds "Terms and Conditions of Sale", and since conditions of use are outside our control, the purchaser should determine the suitability of the product for his intended use and assumes all risk and liability whatsoever in connection therewith.*

---