

CROUSE-HINDS FLEXITITE™

PUSH-BUTTON STATIONS

ASSEMBLY INSTRUCTIONS FOR X8635 PENDANTS

- 4, 6, 8 BUTTON PENDANT ONLY**
If toggle switch option is used, mount per instructions on reverse side. If the pilot light option is used mount per instructions contained in its kit package.
- Remove jacket from pendant end of cord for a distance of:
 - 19" for 8 button
 - 15" for 6 button
 - 12" for 4 button
 - 6" for 2 button
- Select proper grommet from table 1. Slide onto cord with tapered end leading to a point of 1 1/2 inches beyond skinned section.

GROMMET SELECTOR GUIDE			
PENDANT STATION	CORD/CABLE OD RANGE	GROMMET	GROMMET ID
2-Button	417-525	SMALL	0.42
	525-615	LARGE	0.53
4-Button	500-615	SMALL	0.49
	615-765	LARGE	0.64
6-Button	590-700	SMALL	0.60
	700-810	LARGE	0.70
8-Button	590-730	SMALL	0.58
	705-790	MEDIUM	0.69
	790-920	LARGE	0.78

Table 1

See figure 1. Use soap or silicone grease on cord jacket if necessary to slip grommet in place.

- Mount cable clamp bracket to pendant front using two #10 lock

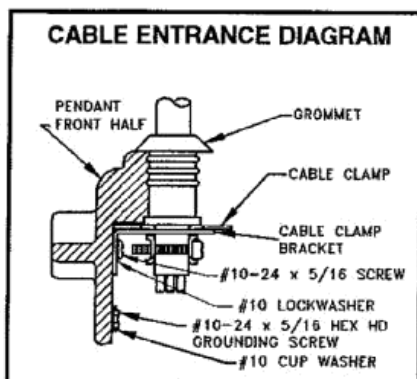


Figure 1

washers and two #10-24 x 5/16 machine screws. Refer to figure 1 for proper positioning. Slip the cable clamp into position in the rectangular hole of the bracket.

- Slide cord through clamp until grommet is in proper position. Seat grommet properly in pendant front half. Tighten clamp on cord. Tighten both screws equally.
- Important:** For the following steps at least 1/2 inch of conductor slack must be provided for every conductor. This prevents strain from being transmitted to connections.
- Cut ground wire to length and skin approximately 1/2 inch. Secure to pendant front using the hex head green colored screw and cup washer provided.

2 BUTTON PENDANT

Follow instructions in paragraphs 9, 13, 14, and 15.

4, 6 BUTTON PENDANT

Follow instructions in paragraphs 8, 10, 11, 13, 14, and 15.

8 BUTTON PENDANT

Follow instructions in paragraphs 8, 9, 12, 13, 14, and 15.

- Connect wires to the pilot light and toggle switch if these options are used.
- Cut off, skin, and attach conductors to switch terminals as required. Place the switches in the front half such that the common terminal is toward the pendant top.
- Install switches in the front half such that the common terminal is towards the pendant top. Place the separator sheet over the switches, ensuring it is fully seated in the pendant front. Install the barriers over each switch (See figure 2).
- Cut off, skin, and attach conductors to switch terminals as required. Route wiring on top of plastic separator.

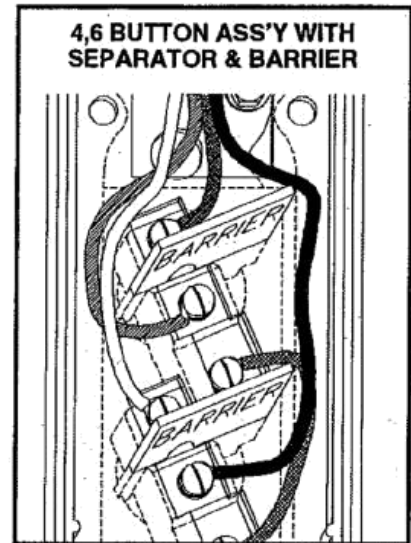


Figure 2

- Use cable ties provided to neatly harness the wires behind the back center of the switches. The wires must be kept clear from the diagonally opposite outside switch corners for proper support and sealing of the switches.
- Invert base section onto assembly, making sure all conductors are neatly within the gutter provided and edge is completely clear to make watertight seal. Securely fasten with the shoulder screws provided.
- Snap desired indicator discs in position on face of front half.
- Secure strain relief member to tab extending from the top of pendant. Strain relief member should be 2 inches shorter than electric cable/cord to insure slack in cable/cord at all times.
- Verify proper operation before applying power.

WARNING: FAILURE TO CAREFULLY FOLLOW INSTRUCTIONS COULD RESULT IN SERIOUS BODILY INJURY AND/OR PROPERTY DAMAGE

UNITS WITH TOGGLE SWITCH ONLY

1. Pendant front half to be modified as shown in figure 3.
2. Toggle switch to be installed and locked in position with switchguard protection per figure 4.
3. The toggle switch is to be installed with switch marking "ON" in the up position as shown in figure 5.

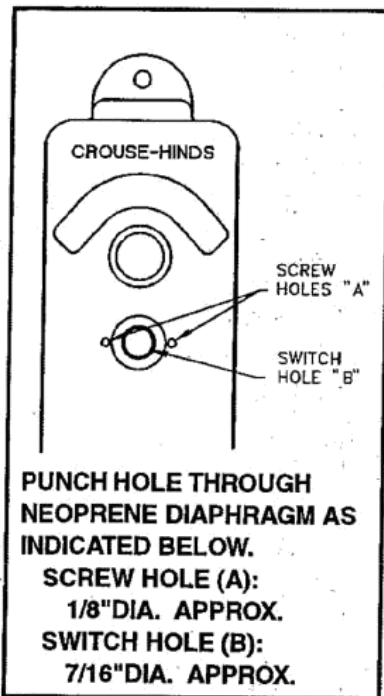


Figure 3

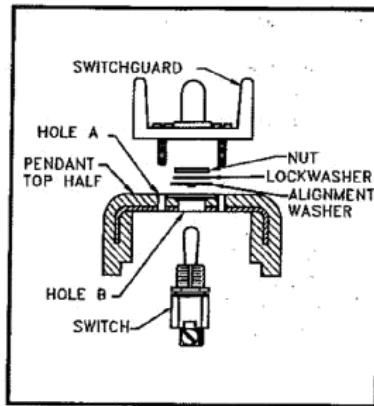


Figure 4

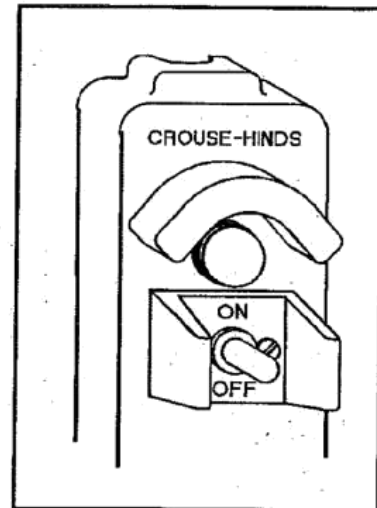


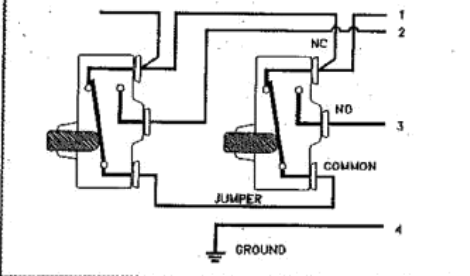
Figure 5

4. Switch guard markings "ON" -- "OFF" to be properly installed taking care not to damage the toggle boot. The guard is to be securely mounted to pendant front using the #8 self tapping screws furnished.

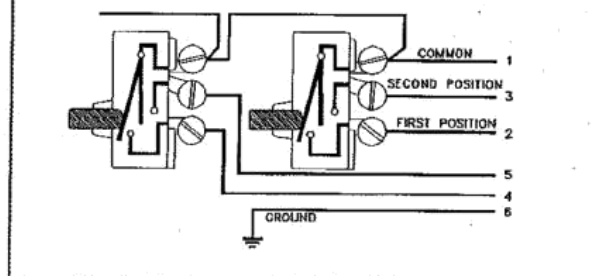
CAUTION:
BEFORE WIRING, RECHECK SWITCH ASSEMBLY AND SWITCH GUARD TO INSURE "ON" IS IN THE UP POSITION.

WIRING SUGGESTIONS

A method for electrically interlocking 1 speed push-button stations. Only 2 stations illustrated.



A method for wiring 2-speed push button stations. Only 2 stations illustrated.



EATON CROUSE-HINDS
SERIES



Eaton.com/recycling

Crouse-Hinds Molded Products

UNITED STATES:

4758 Washington Street • LaGrange, North Carolina 28551
Phone (252) 566-3014 • FSCM-90129 • FAX (252) 566-9337

CANADA:

Crouse-Hinds Canada, Ltd.
5925 McLaughlin Road • Mississauga, Ontario L5R 1B8