

Remote monitoring, increase operational efficiency through actionable insights derived from your data.

Applications:

- Provide a wireless connection to Eaton's Brightlayer Industrial (BLI) digital platform
- Compatible with Crouse-Hinds series Smart EBMX explosionproof enclosures, ACE DG1 explosionproof variable frequency drives and SCSR portable combination starters
- Gateway can be purchased in conjunction with these solutions or retrofitted into an existing install base

Features:

- **Keep employees safe** – remote monitoring capabilities help minimize the time employees spend in harsh areas to monitor and troubleshoot equipment
- **Reduce downtime** – anytime, anywhere access to real-time alerts, alarms and trend data to identify and alleviate variables that impact performance before they cause downtime
- **Compliance alignment** – actively monitor critical parameters to help ensure your systems adhere to policies, codes and standards
- **Subscription includes Brightlayer Industrial Remote Monitoring** – with the purchase of a 1 year subscription, the CHG harsh industrial gateway allows for connection to Eaton's Brightlayer on your desktop and mobile device

Certifications and compliances:

UL standards:

- UL61010-1
- UL50E
- File E529455

CSA standards:

- CSA C22.2 No. 61010-1
- CSA C22.2 No. 94.2

Environmental ratings:

- Type 4X, IP66
- T-Code: T4

Additional specifications:

Communication protocol:

- Modbus RTU (Remote Terminal Unit) protocol utilizing the RS-485 serial interface

Temperature range:

- -20°C to +47°C

Weights:

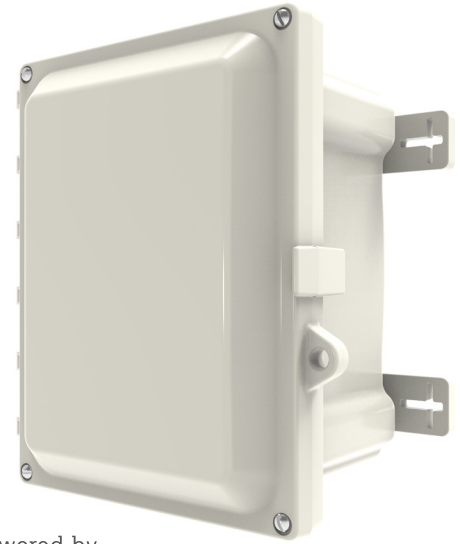
- Single configuration – 5 lbs.
- Multi-drop configuration – 6 lbs.

Cellular carrier supported:

- AT&T

Electrical ratings:

- Voltage: 100-240 VAC
- Input amperage: 0.064A max.
- Frequency: 50/60 Hz



2C

Powered by

Brightlayer



Learn more about Brightlayer
Scan QR code or go to: eaton.com/Brightlayer

Ordering information:

Cat. #	Description
BLI-CHG-4X-S	Non-hazardous rated gateway, standard configuration (1/2" Myers hubs, qty. = 2)
BLI-CHG-4X-S-6	Non-hazardous rated gateway, additional entries configuration (1/2" Myers hubs, qty. = 7)
BLI-CH-PWR-ESS	1 year subscription to Brightlayer Industrial Remote Monitoring

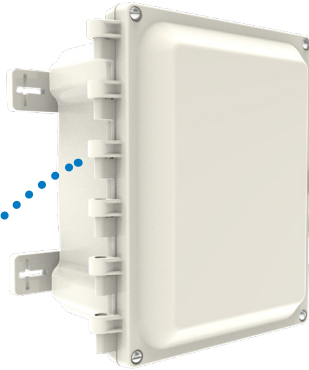
How it works:

The CHG gateway assembly enables the simple and secure connection of your assets to Eaton's Brightlayer Industrial Remote Monitoring application. Improve uptime and prevent equipment damage with data captured from your installed equipment. Get the actionable insights and alerts you need on a single screen, anywhere, anytime, on any device.

2C



Eaton digitally enabled product
(EBMX explosionproof motor control shown)



Crouse-Hinds series CHG gateway



Equipment data and insights





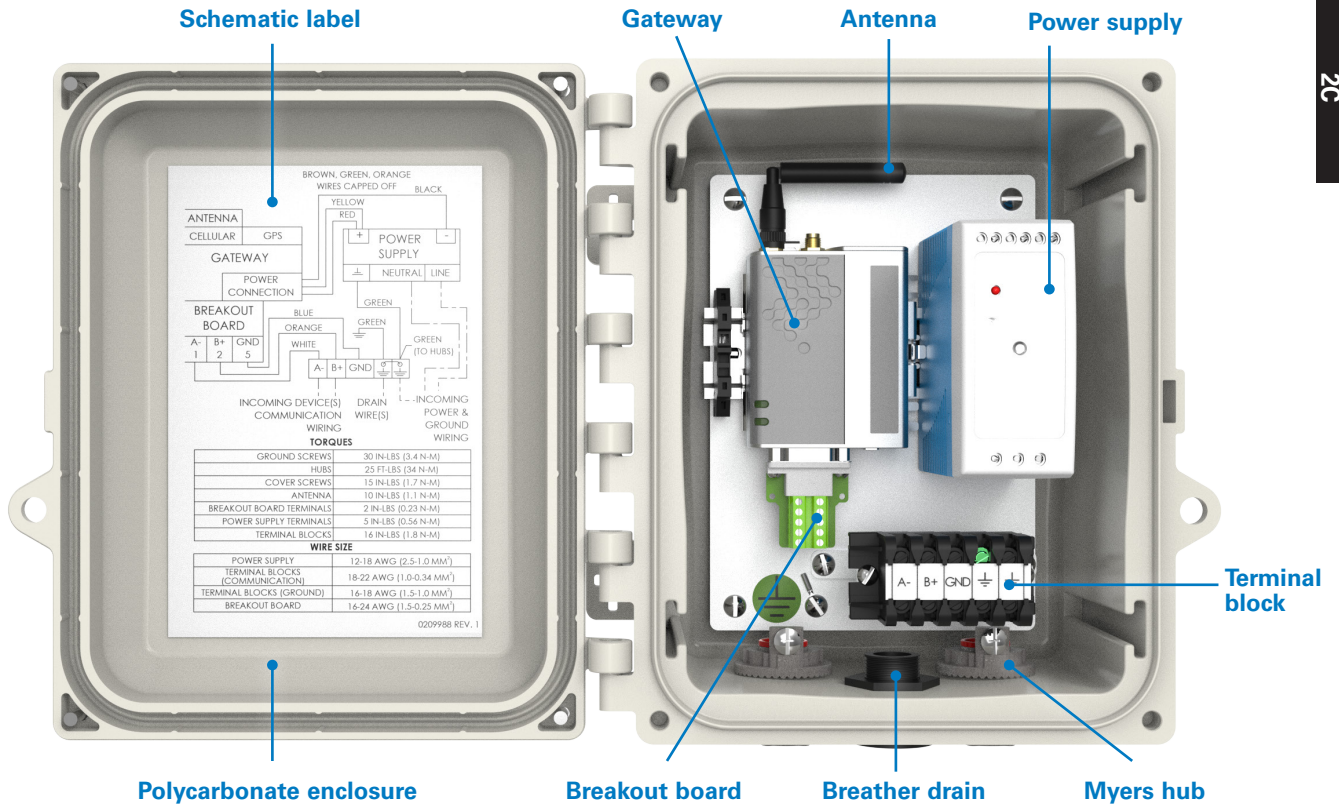
Ease of installation

Includes terminal block for easy wire termination for up to six devices.



Secure

Eaton's Secure Development Lifecycle helps ensure platform cybersecurity by the application of technical standards, tools and processes.



Schematic label

Gateway

Antenna

Power supply

Polycarbonate enclosure

Breakout board

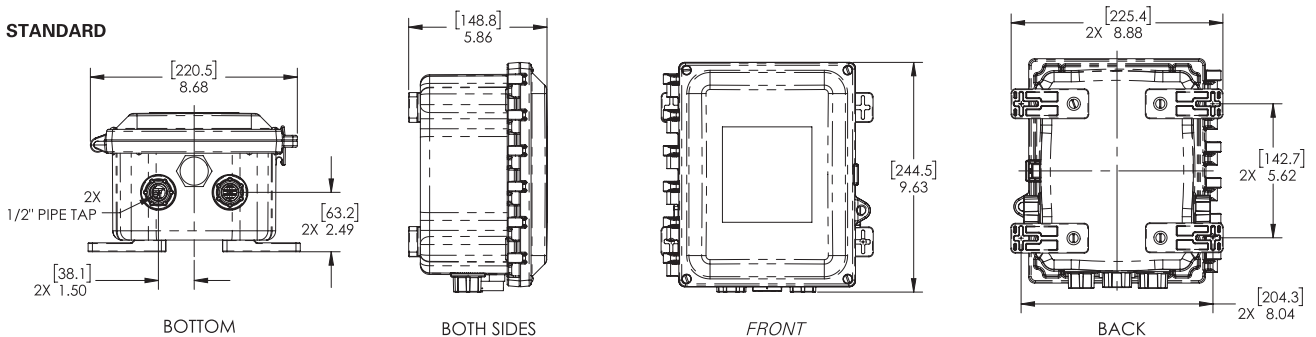
Breather drain

Myers hub

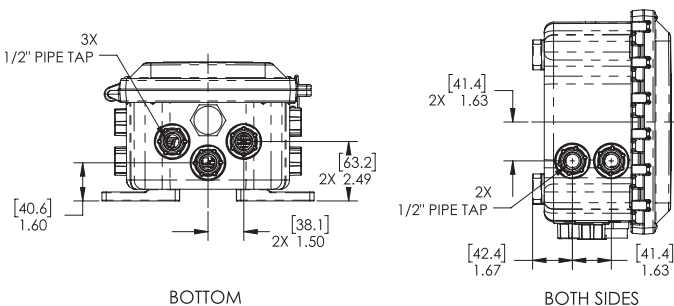
Terminal block

Dimensions:

STANDARD



ADDITIONAL ENTRIES



PRIMARY DIMENSIONS ARE IN INCHES. DIMENSIONS IN [] ARE IN MILLIMETERS.