

CHG hazardous area gateways

Cl. I, Div. 2, Groups A, B, C, D
Cl. I, Zone 2, IIC
Cl. II, Div. 1, Groups F, G
Cl. III
Zone 22

Type 4X; IP66

2C

Remote monitoring, increase operational efficiency through actionable insights derived from your data.

Applications:

- Provide a wireless connection to Eaton's Brightlayer Industrial (BLI) digital platform
- Compatible with Crouse-Hinds series Smart EBMX explosionproof enclosures, ACE DG1 explosionproof variable frequency drives and SCSR portable combination starters
- Gateway can be purchased in conjunction with these solutions or retrofitted into an existing install base

Features:

- **Keep employees safe** – remote monitoring capabilities help minimize the time employees spend in harsh and hazardous areas to monitor and troubleshoot equipment
- **Reduce downtime** – anytime, anywhere access to real-time alerts, alarms and trend data to identify and alleviate variables that impact performance before they cause downtime
- **Compliance alignment** – actively monitor critical parameters to help ensure your systems adhere to policies, codes and standards
- **Subscription includes Brightlayer Industrial Remote Monitoring** – with the purchase of a 1 year subscription, the CHG hazardous area gateway allows for connection to Eaton's Brightlayer on your desktop and mobile device

Certifications and compliances:

NEC/CEC:

- Class I, Division 2, Groups A, B, C, D
- Class I, Zone 2, IIC
- Class II, Division 1, Groups F, G
- Class III
- Zone 22

UL standards:

- UL61010-1
- UL121201
- UL50E
- File E499908

CSA standards:

- CSA C22.2 No. 61010-1
- CSA C22.2 No. 213-17
- CSA C22.2 No. 94.2

Environmental ratings:

- Type 4X, IP66
- T-Code: T4

Additional specifications:

Communication protocol:

- Modbus RTU (Remote Terminal Unit) protocol utilizing the RS-485 serial interface

Temperature range:

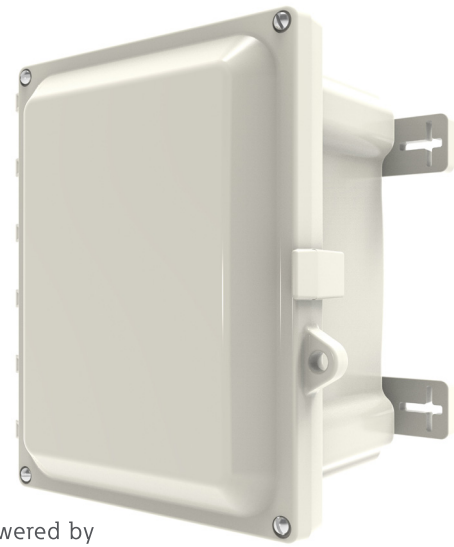
- -20°C to +47°C

Weights:

- Single configuration – 5 lbs.
- Multi-drop configuration – 6 lbs.

Cellular carrier supported:

- AT&T



Powered by

Brightlayer



Learn more about Brightlayer

Scan QR code or go to: eaton.com/Brightlayer

Electrical ratings:

- Voltage: 100-240 VAC
- Input amperage: 0.064A max.
- Frequency: 50/60 Hz

Ordering information:

Cat. #	Description
BLI-CHG-D2-S	Hazardous rated gateway, standard configuration (1/2" Myers hubs, qty. = 2)
BLI-CHG-D2-S-6	Hazardous rated gateway, additional entries configuration (1/2" Myers hubs, qty. = 7)
BLI-CH-PWR-ESS	1 year subscription to Brightlayer Industrial Remote Monitoring

CHG hazardous area gateways

Cl. I, Div. 2, Groups A, B, C, D
Cl. I, Zone 2, IIC
Cl. II, Div. 1, Groups F, G
Cl. III
Zone 22

Type 4X; IP66

2C

How it works:

The CHG gateway assembly enables the simple and secure connection of your assets to Eaton's Brightlayer Industrial Remote Monitoring application. Improve uptime and prevent equipment damage with data captured from your installed equipment. Get the actionable insights and alerts you need on a single screen, anywhere, anytime, on any device.

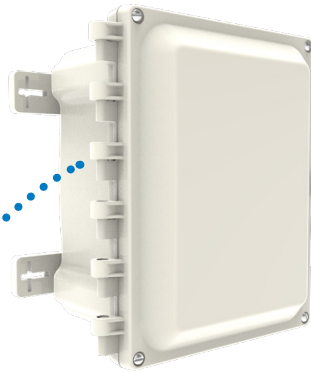


Critical system in harsh and hazardous area

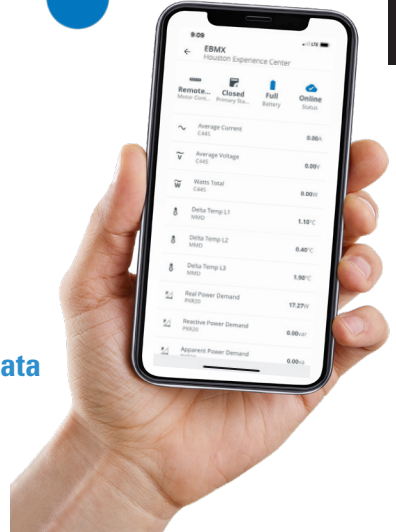


Eaton digitally enabled product

(EBMX explosionproof motor control shown)



Crouse-Hinds series CHG gateway



Equipment data and insights

2C

CHG hazardous area gateways

Cl. I, Div. 2, Groups A, B, C, D Type 4X; IP66
 Cl. I, Zone 2, IIC
 Cl. II, Div. 1, Groups F, G
 Cl. III
 Zone 22

2C



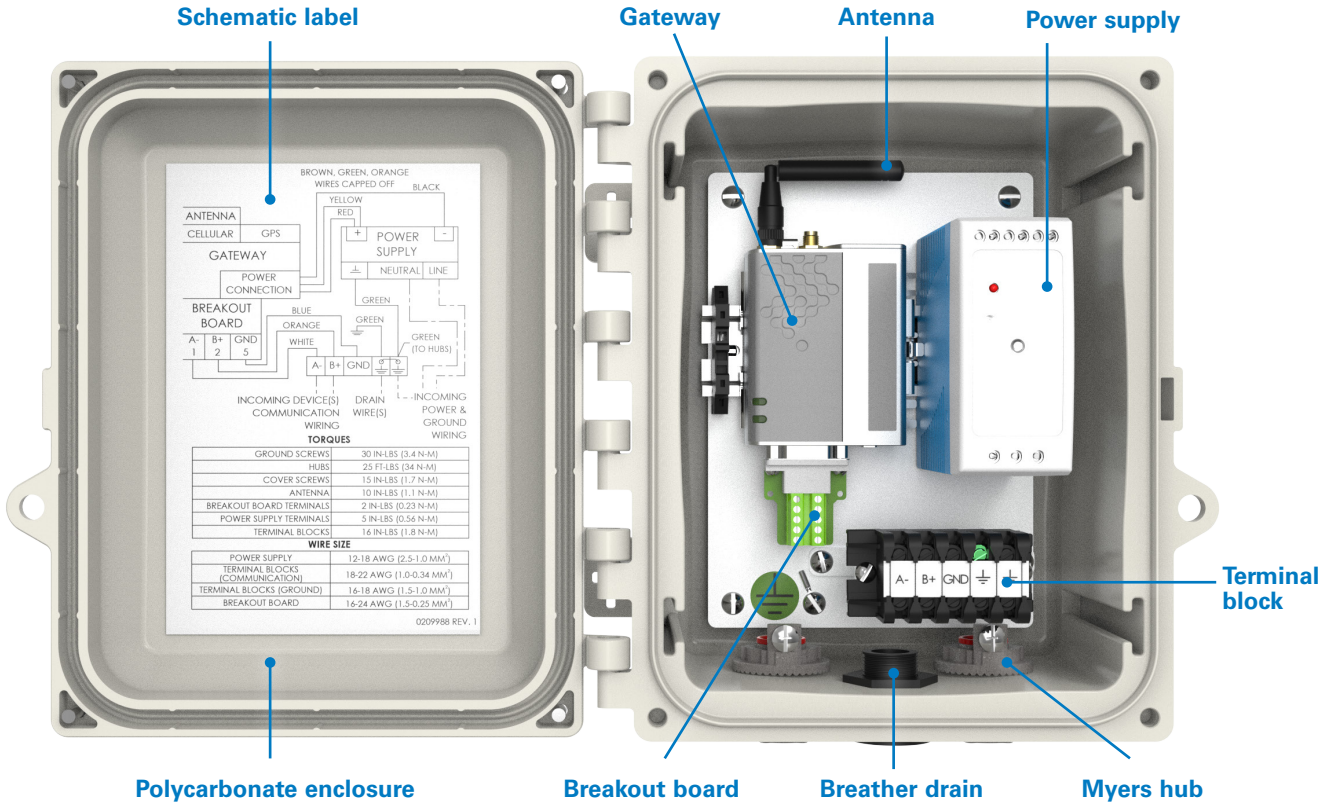
Ease of installation

Includes terminal block for easy wire termination for up to six devices.



Secure

Eaton's Secure Development Lifecycle helps ensure platform cybersecurity by the application of technical standards, tools and processes.



Schematic label

Gateway

Antenna

Power supply

Polycarbonate enclosure

Breakout board

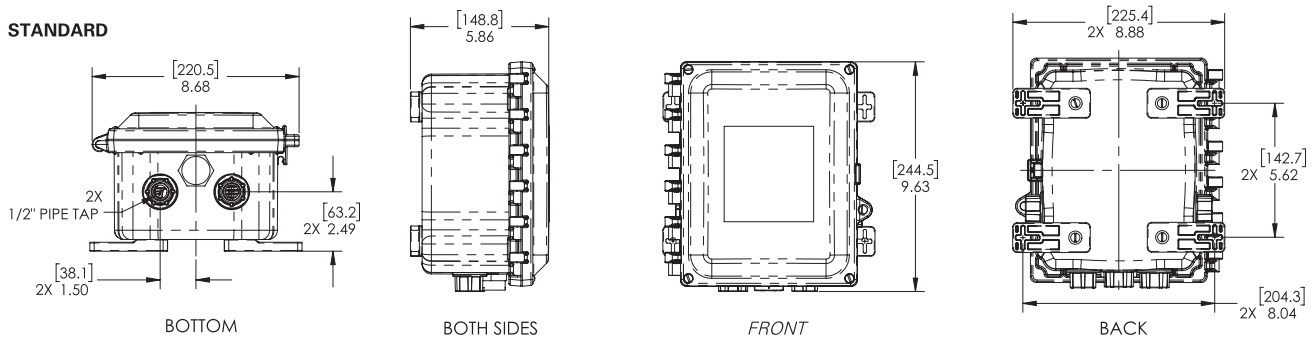
Breather drain

Myers hub

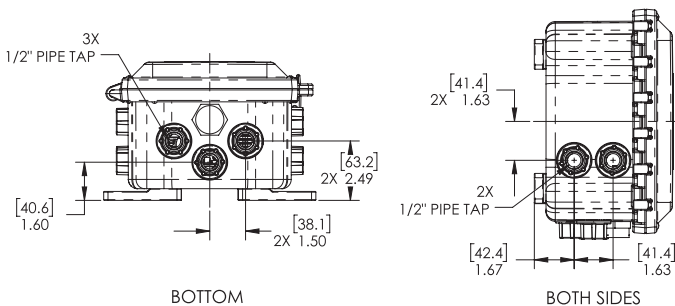
Terminal block

Dimensions:

STANDARD



ADDITIONAL ENTRIES



PRIMARY DIMENSIONS ARE IN INCHES. DIMENSIONS IN [] ARE IN MILLIMETERS.