

9P Posi-Max Series Power Distribution Panel

UL / cUL Listed Components

Customized solutions for providing temporary power.

No other manufacturer has the unique ability to deliver customized portable power solutions quickly and safely in the event of a power outage.

Eaton's Crouse-Hinds Posi-Max is a power distribution panel that provides a quick and safe method of connection to portable generators. The unique Posi-Max design allows for quick and safe restoration of essential power services.

The Posi-Max Series is available in 200A to 1200A and the enclosure can be customized to meet specific environmental and configuration needs. The heart of the system is the field-proven Posi-Lok® power distribution system designed to meet Articles 520.53(K) and 530.22(A) of the NEC®. The sequential port interlock requires the user to connect and disconnect each plug in the proper sequence ensuring ground connection. This single pole system allows for easy connection in any situation.

Applications:

The Posi-Max Series is used to back feed buildings for quick power restoration in the event of an outage. It is an ideal solution for safe and reliable power restoration for:

- Banks
- Cell Towers
- Data Centers
- Gas Stations
- Pharmacies
- Retail Stores
- Stadiums, Sports Arenas
- Toll Roads
- Utilities
- Water Treatment Facilities

Features and Benefits:

- 200A - 1200A service
- Color coded polarity for ease of use
- Quick access cable entry door
- Lockout capability for safety and security
- Available with E1016 Cam-Lok® connection for enhanced safety and sequential interlocked capability
- Available with manual transfer switches
- Quick restoration of essential services
- Limit switch options available



Posi-Max panel in cold rolled steel with epoxy powder paint

Component Certifications and Compliances:

- NEMA 3R, 4*, 4X*, 12
- Enclosure UL and cUL Listed
- Posi-Lok panel UL and CSA Listed
- Posi-Lok and Cam-Lok connector UL and CSA Listed
- Article compliance: 520.53(K) and 530.22(A) of the NEC

Materials and Finishes:

- Enclosure:
 - Cold rolled steel - epoxy powder paint
 - Stainless steel - natural
- Hardware - stainless steel
- Gasket - neoprene

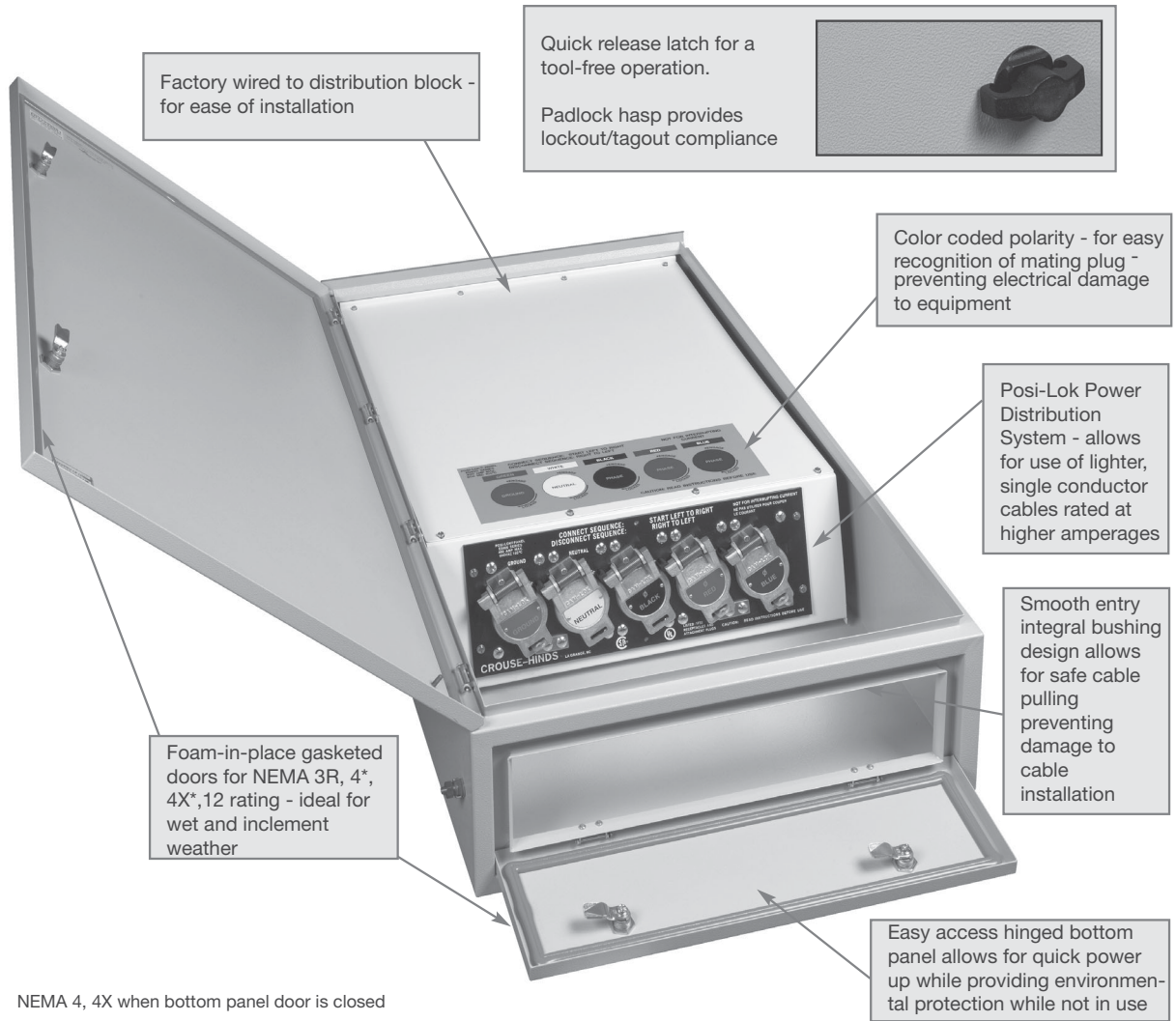
*NEMA 4, 4X when bottom panel door is closed.

Posi-Max Series Power Distribution Panel

UL / cUL Listed Components

9P

Posi-Max Features:



Custom Capabilities

We can design the Posi-Max unit to meet your exact specifications for color, material, and finish.

All the design choices are yours!

9P

Ordering Information:

	Posi Max Type	Connection Type	Amp	Panel Posi / Cam-Lok Color Configuration	Enclosure Type	Limit Switch Options	Disconnect Options (PM3 only)
Example:	PM1	EO	400	1687	N3RPS	LS5	CB
Options:	PM1 (Wired to distribution block)	EO (Posi Lok)	200	1685 (Female GR, WH, BK)	N1PS (NEMA 1 Painted Steel)	LS1 (1st Position)	CB† (Circuit breaker)
	PM2 (Direct wire; no distribution block)	CO (Cam Lok)	315	1686NN (Female Non Neutral GR, BK, RD, BU)	N3RPS (NEMA 3R Painted Steel)	LS2 (2nd Position)	FDS‡ (Fused disconnect switch)
	PM3 (With disconnect options)		400	1696 (Female GR, WH, BK, RD)	N3RSS (NEMA 3R Stainless Steel)	LS3 (3rd Position)	NFDS (Non-fused disconnect switch)
			600	1687 (Female GR, WH, BK, RD, BU)		LS4 (4th Position)	CBMTS† (Circuit breaker manual transfer switch)
			800	1702* / 1890 (Female GR, WH, BR, ORG, YEL)		LS5 (5th Position)	FMTS‡ (Fused manual transfer switch)
			1200	1885 (Female GR, WH, WH, BK, RD, BU)		LS6 (6th Position)	NFMTS (Non-fused manual transfer switch)
				1660 (Male GR, WH, BK)		LSAll (All Positions)	NFMTS (Non-fused manual transfer switch)
				1661NN (Male Non Neutral GR, BK, RD, BU)			
				1672 (Male GR, WH, BK, RD)			
				1662 (Male GR, WH, BK, RD, BU)			
				1703** / 1891 (Male GR, WH, BR, ORG, YEL)			
				1860 (Male GR, WH, WH, BK, RD, BU)			

Note:

*1702 panel configuration for 315 AMP to 1200 AMP; 1890 panel configuration for 200 AMP.

**1703 panel configuration for 315 AMP to 1200 AMP; 1891 panel configuration for 200 AMP.

†Voltage and AIC rating required.

‡Voltage required.

Panel Posi / Cam Lok Configuration Code:

- BK: Black
- BR: Brown
- BU: Blue
- GR: Green
- ORG: Orange
- RD: Red
- WH: White
- YEL: Yellow