

# NCB Series Circuit Breakers and Enclosures

600VAC, 250VDC Heavy Duty

Corrosion-Resistant  
Dust-tight  
Watertight  
Weatherproof  
NEMA 3, 4X, 12

### Applications:

- NCB circuit breakers are for use in conjunction with a variety of heating, lighting and power circuits to provide disconnect means and short circuit protection.

### Features:

- Enclosures are made of *Krydon*<sup>®</sup>, Eaton's Crouse-Hinds' high impact strength fiberglass-reinforced polyester material having excellent corrosion resistance and stability to heat
- Unitized, strong and durable enclosure construction provides longer service life for equipment
- Enclosure has hinged access door which opens 160° for easy wiring and maintenance. Three screws for door frame are hidden behind access door
- Access door may be padlocked to prevent unauthorized access

### Certifications and Complies:

- NEMA: 3, 4X and 12
- CSA Standard: C22.2 No. 94
- UL Standard: 489

### Electrical Rating Ranges:

- 100, 150, 225, 250 and 400 amp frames

### Options:

- | Description  | Suffix      |
|--|-------------|
| • Insulated, groundable type terminal block for grounded or ungrounded neutral can be supplied | <b>S618</b> |
| • Hubs (see "Note on Hubs") – see listing on page 677  |             |
| • Grounding plate or bushing – see listing on page 677   |             |



Circuit breaker enclosure with built-in *Krydon* material handle

### Ordering Information

To order an enclosure complete with circuit breaker, insert the manufacturer's symbol in the designated position of the catalog number.

Enclosures only can be ordered. Select from listings.

Circuit Breaker			Enclosure	
Poles	Voltage Rating	Amps	With Circuit Breaker Cat. #	Without Circuit Breaker Cat. #
<b>100A Frame (Non-Interchangeable Trip)</b>				
2	240 VAC/ 250 VDC	15	NCB1018F ①15EB 22	NCB1018F
		20	NCB1018F ①20EB 22	
		25	NCB1018F ①25EB 22	
		30	NCB1018F ①30EB 22	
		35	NCB1018F ①35EB 22	
		40	NCB1018F ①40EB 22	
		50	NCB1018F ①50EB 22	
		60	NCB1018F ①60EB 22	
		70	NCB1018F ①70EB 22	
		80	NCB1018F ①80EB 22	
		90	NCB1018F ①90EB 22	
100	NCB1018F ①100EB 22			
2	480 VAC/ 250 VDC	15	NCB1018F ①15EHB 24	NCB1018F
		20	NCB1018F ①20EHB 24	
		25	NCB1018F ①25EHB 24	
		30	NCB1018F ①30EHB 24	
		35	NCB1018F ①35EHB 24	
		40	NCB1018F ①40EHB 24	
		50	NCB1018F ①50EHB 24	
		60	NCB1018F ①60EHB 24	
		70	NCB1018F ①70EHB 24	
		80	NCB1018F ①80EHB 24	
		90	NCB1018F ①90EHB 24	
100	NCB1018F ①100EHB 24			

①Circuit Breakers:

**NOTE ON HUBS:** The following number and sizes of hubs (not mounted) are included when circuit breakers are ordered complete. If enclosures only are ordered, hubs must be ordered separately (see "Options")

Manufacturer	Symbol	Frames				Circuit Breaker Frame	Ampere Rating	Number Included	Hub Size
		100/ 150A 240V	480V	600V	225/ 250A 600V				
General Electric	TT	TEB	TED†	TED†	TFJ	EB, EHD*, FDB‡	15-50	2	1¼
Square D	DT	FAL†	FAL†	FAL†	KAL LAL	EB, EHD*, FDB‡	60-100	2	2
Cutler-Hammer	WT		EHB,	FB,	JB,	JDB■	110-225	2	2½
		EB	EHD	FDB	JDB	KDB§	250-400	2	3

†Specify voltage.

\*Formerly EHB.  
‡Formerly FB.  
§Formerly LB.  
■Formerly JB.

# NCB Series Circuit Breakers and Enclosures

600VAC, 250VDC Heavy Duty

Corrosion-Resistant  
Dust-tight  
Watertight  
Weatherproof  
NEMA 3, 4X, 12

3C

Circuit Breaker			Enclosure		Without Circuit Breaker
Poles	Voltage Rating	Amps	With Circuit Breaker Cat. #	Without Circuit Breaker Cat. #	Cat. #
<b>100/150A Frame (Non-Interchangeable Trip) – continued</b>					
2†	600 VAC/ 250 VDC	15	NCB1018F ①15FB 26	NCB1018F	
		20	NCB1018F ①20FB 26		
		25	NCB1018F ①25FB 26		
		30	NCB1018F ①30FB 26		
		35	NCB1018F ①35FB 26		
		40	NCB1018F ①40FB 26		
		50	NCB1018F ①50FB 26		
		70	NCB1018F ①70FB 26		
		80	NCB1018F ①80FB 26		
		90	NCB1018F ①90FB 26		
100	NCB1018F ①100FB 26				
3	240 VDC	15	NCB1018F ①15EB 32	NCB1018F	
		20	NCB1018F ①20EB 32		
		25	NCB1018F ①25EB 32		
		30	NCB1018F ①30EB 32		
		35	NCB1018F ①35EB 32		
		40	NCB1018F ①40EB 32		
		50	NCB1018F ①50EB 32		
		70	NCB1018F ①70EB 32		
		80	NCB1018F ①80EB 32		
		90	NCB1018F ①90EB 32		
100	NCB1018F ①100EB 32				
3	480 VAC	15	NCB1018F ①15EHB 34	NCB1018F	
		20	NCB1018F ①20EHB 34		
		25	NCB1018F ①25EHB 34		
		30	NCB1018F ①30EHB 34		
		35	NCB1018F ①35EHB 34		
		40	NCB1018F ①40EHB 34		
		50	NCB1018F ①50EHB 34		
		70	NCB1018F ①70EHB 34		
		80	NCB1018F ①80EHB 34		
		90	NCB1018F ①90EHB 34		
100	NCB1018F ①100EHB 34				
3	600 VAC	15	NCB1018F ①15FB 36	NCB1018F	
		20	NCB1018F ①20FB 36		
		25	NCB1018F ①25FB 36		
		30	NCB1018F ①30FB 36		
		35	NCB1018F ①35FB 36		
		40	NCB1018F ①40FB 36		
		50	NCB1018F ①50FB 36		
		70	NCB1018F ①70FB 36		
		80	NCB1018F ①80FB 36		
		90	NCB1018F ①90FB 36		
100	NCB1018F ①100FB 36				
<b>225/50A Frame (Non-Interchangeable Trip)§</b>					
2	600 VAC/ 250 VDC	110	NCB1024F ①110JB 26	NCB1024F	
		125	NCB1024F ①125JB 26		
		150	NCB1024F ①150JB 26		
		175	NCB1024F ①175JB 26		
		200	NCB1024F ①200JB 26		
225	NCB1024F ①225JB 26				
3	600 VDC	110	NCB1024F ①110JB 36	NCB1024F	
		125	NCB1024F ①125JB 36		
		150	NCB1024F ①150JB 36		
		175	NCB1024F ①175JB 36		
		200	NCB1024F ①200JB 36		
225	NCB1024F ①225JB 36				
<b>400A Frame (Interchangeable Trip)*</b>					
2	600 VAC/ 250 VDC	250	NCB1426F ①250LB 26	NCB1426F	
		300	NCB1426F ①300LB 26		
		350	NCB1426F ①350LB 26		
		400	NCB1426F ①400LB 26		
3	600 VAC	250	NCB1426F ①250LB 36	NCB1426F	
		300	NCB1426F ①300LB 36		
		350	NCB1426F ①350LB 36		
		400	NCB1426F ①400LB 36		

①Circuit Breakers:

Manufacturer	Symbol	Frames			
		100/ 150A 240V	480V	600V	225/ 250A 600V
General Electric	TT	TEB	TED†	TED†	TFJ
Square D	DT	FAL†	FAL†	FAL†	KAL LAL
Cutler-Hammer	WT	EB	EHB, EHD	FB, FDB	JB, JDB

**Note on Hubs:** The following number and sizes of hubs (not mounted) are included when circuit breakers are ordered complete. If enclosures only are ordered, hubs must be ordered separately (see "Options").

Circuit Breaker Frame	Ampere Rating	Number Included	Hub Size
EB, EHD⊕, FDB▲	15–50	2	1¼
EB, EHD⊕, FDB▲	60–100	2	2
JDB■	110–225	2	2½

■ Formerly JB  
⊕ Formerly EHB  
▲ Formerly FB

†Specify voltage.

‡2-pole, 600 VAC/250 VDC for Square D circuit breakers only.

\*For Square D circuit breakers only.

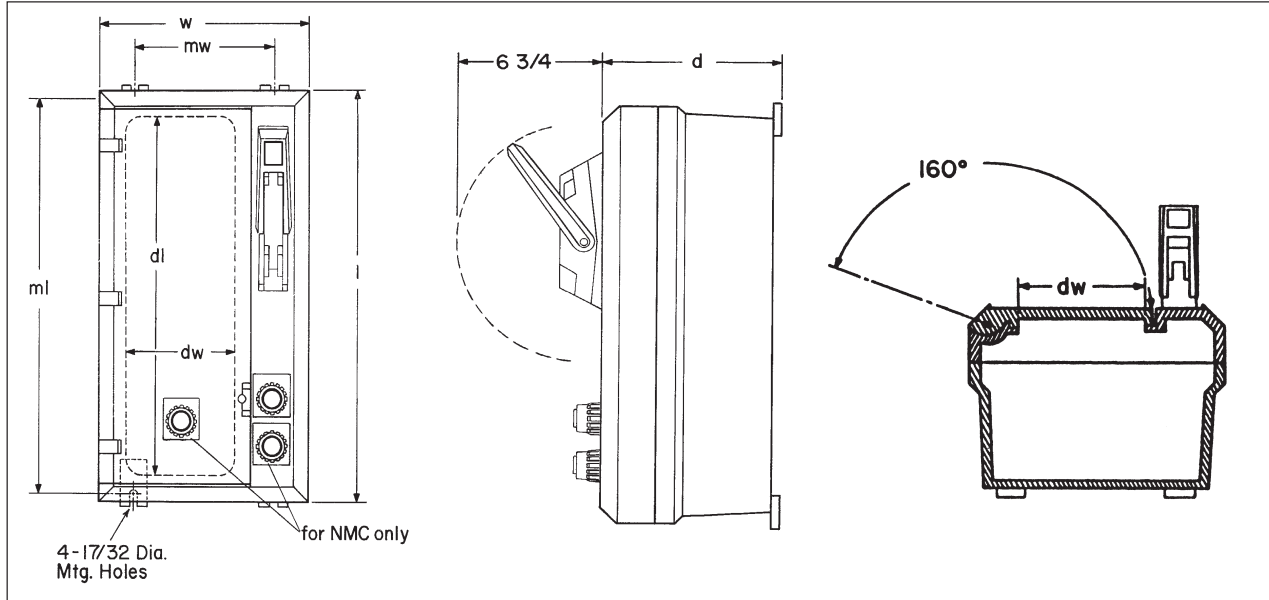
§Also available with interchangeable trip breakers. Specify on order.

# 3C NCB Series Circuit Breakers and Enclosures

600VAC, 250VDC Heavy Duty

Corrosion-Resistant  
Dust-tight  
Watertight  
Weatherproof  
NEMA 3, 4X, 12

## Dimensions In Inches\*



Cat. #	Outside Dimensions		d	Mounting Dimensions		Door Opening Dimensions	
	l	w		mw	ml	dl	dw
NCB1018	19 <sup>13</sup> / <sub>32</sub>	11 <sup>13</sup> / <sub>32</sub>	8 <sup>23</sup> / <sub>32</sub>	7 <sup>7</sup> / <sub>8</sub>	19 <sup>9</sup> / <sub>8</sub>	16 <sup>7</sup> / <sub>8</sub>	5 <sup>11</sup> / <sub>16</sub>
NCB1024	25 <sup>19</sup> / <sub>32</sub>	11 <sup>13</sup> / <sub>32</sub>	8 <sup>23</sup> / <sub>32</sub>	7 <sup>7</sup> / <sub>8</sub>	25 <sup>5</sup> / <sub>8</sub>	22 <sup>7</sup> / <sub>8</sub>	5 <sup>11</sup> / <sub>16</sub>
NCB1426	27 <sup>13</sup> / <sub>32</sub>	15 <sup>19</sup> / <sub>32</sub>	9 <sup>23</sup> / <sub>32</sub>	11 <sup>7</sup> / <sub>8</sub>	27 <sup>1</sup> / <sub>4</sub>	23 <sup>11</sup> / <sub>16</sub>	9 <sup>11</sup> / <sub>16</sub>

\*Dimensions are approximate, not to be used for construction purposes.