

N2FA and N2FAC Fire Alarm Stations

Cl. I, Div. 2, Groups B, C, D
 NEMA 3, 7BCD (Div. 2), 12
 Raintight
 Wet Locations

4C

Factory Sealed, Corrosion-Resistant

Applications:

N2FA and N2FAC fire alarm stations are used:

- As break-glass fire alarm stations
- In conjunction with audible and/or visible signaling devices to alert personnel of a fire hazard
- In Class I, Division 2, Groups B, C, D hazardous areas where flammable vapors or gases may be present due to an accident or abnormal operation
- In damp, wet or corrosive locations
- Indoors or outdoors in Division 2 areas of petroleum refineries, chemical plants and other process industry facilities where similar hazards exist

Features:

- Factory sealed. External seals are not required.
- Enclosures are made of *Krydon*[®] fiberglass-reinforced polyester material having excellent corrosion resistance and stability to heat and sunlight.
- Highly visible molded-in red color for quick identification.
- Break-glass rod is attached to station with a chain for ready access during an emergency.
- Factory installed dead end (N2FA) or through feed (N2FAC) hubs – 1/2", 3/4" and 1" sizes.

Certifications and Compliances:

- NEC:
 Class I, Division 2, Groups B, C, D
- NEMA 3, 7BCD (Division 2), 12

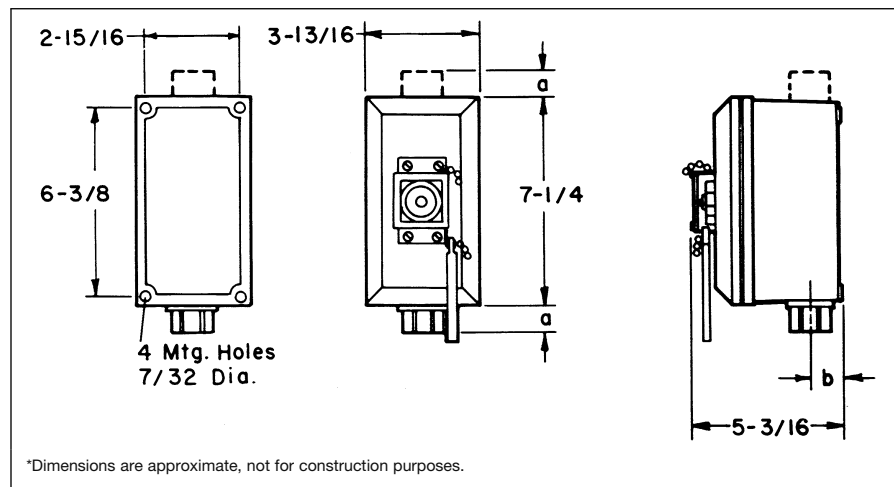


4C

Ordering Information

Hub Size	Dead End Cat. #	Through Feed Cat. #	Replacement Glass Cat. #
1/2	N2FA11	N2FAC11	DS K14
3/4	N2FA21	N2FAC21	DS K14
1	N2FA31	N2FAC31	DS K14

Dimensions* In Inches:



1/2" & 3/4" Hubs		1" Hubs	
a	b	a	b
1 1/8	1 1/16	1 1/4	1 5/16