



3-pole, 10 A 0-1

Technical data

Ex-Main current switches 10 A

| | | |
|---|--|-------------------------------|
| Marking accd. to 2014/34/EU | Ⓔ II 2 G Ex eb db IIC T6 Gb / Ⓔ II 2 D Ex tb IIIC T80°C Db | |
| EC-Type Examination Certificate | BVS 16 ATEX E 079 | |
| IECEX Certificate of Conformity | IECEX BVS 16.0045 | |
| Marking accd. to IECEx | Ex eb db IIC T6 G Ex tb IIIC T80°C Db | |
| Permissible ambient temperature | -20 °C up to +40 °C ¹⁾ | |
| Rated voltage | up to max. 500 V | |
| Rated current | max. 10 A | |
| Frequency | 50/60 Hz | |
| Rated making/breaking capacity AC-3 accd. EN 60947-3 | U _e 230 V / I _e 10 A U _e 400 V / I _e 10 A U _e 500 V / I _e 10 A | |
| Back-up fuse | up to 400 V AC: 20 A gG up to 500 V AC: 16 A gG | |
| Connecting terminals | main contact | 2 x 1.5 - 2.5 mm ² |
| | auxiliary/signal contact | 2 x 0.5 - 2.5 mm ² |
| Protection class | I | |
| Degree of protection accd. to EN 60529 | IP66 | |
| Cable glands/enclosure drilling | M25 cable gland see ordering details | |
| Weight | approx. 0.60 kg | |
| Enclosure material | impact resistant polyamide | |
| Enclosure colour | black | |
| Padlocking facility | can be locked in OFF position with 3 commercially available padlocks (Ø max. 6 mm) optional | |

¹⁾ Other ambient temperatures on request

GHG 261 - Ex-main current switches 10 A



3-pole, 10 A 0-I

Ordering details

| Content | Cable gland | | Order No. |
|--------------------------------------|-------------|---------------|---------------------------|
| Ex-Main current switches 10 A | | | |
| 3-pole 0-I | 2 x M25 | ON-OFF switch | GHG 261 0006 R0001 |
| Customized version on request | | | |

Accessories

| Type | Application | Fixing method | Order No. |
|--|-----------------------|--------------------|---------------------------|
| Mounting plate for Ex-Main current switches 10 A 3-pole | | | |
| Size 1 | Wall mounting | screwless mounting | GHG 610 1953 R0101 |
| Size 1 | Pipe clamp | screwless mounting | GHG 610 1953 R0102 |
| Size 1 | Trellis-work mounting | screwless mounting | GHG 610 1953 R0103 |

| Type | OU | Order No. |
|------|----|-----------|
|------|----|-----------|

Accessories for mounting plates

| | | |
|--|----|---------------------------|
| Label holder with type label (blank) for mounting plate size 1, 2, 2A and 3 | 10 | GHG 610 1953 R0057 |
| Mounting set for pipes 1" (of 27 - 30 mm) for mounting plates with pipe fixing | 10 | GHG 610 1953 R0020 |

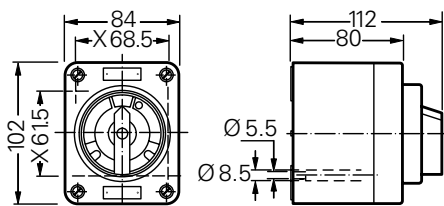
| Type | Application | OU | Order No. |
|------|-------------|----|-----------|
|------|-------------|----|-----------|

Protective canopy for mounting plate

| | | | |
|--------|---------------------------|---|---------------------------|
| Size 1 | for mounting plate size 1 | 1 | GHG 610 1955 R0101 |
|--------|---------------------------|---|---------------------------|

Please pay attention that only order units (OU) according to the ordering details can be delivered.

Dimension drawing



3-pole, 10 A 0-I

X = fixing dimensions



3-pole, 20 A change-over



3-pole, 20 A 0-1

Technical data

Ex-Main current switches 20 A

| | | |
|---|--|-------------------------------|
| Marking accd. to 2014/34/EU | Ⓔ II 2 G Ex ed ia IIC T6 / Ⓔ II 2 D IP66 T55 °C | |
| EC-Type Examination Certificate | PTB 99 ATEX 1161 | |
| IECEX Certificate of Conformity | BK1 07.0012 | |
| Marking accd. to IECEx | Ex ed ia IIC T6 Ex tD A21 IP66 T55 °C | |
| Permissible ambient temperature | -20 °C up to +40 °C ¹⁾ | |
| Rated voltage | up to max. 690 V | |
| Rated current | max. 20 A | |
| Frequency | 50/60 Hz | |
| Rated making/breaking capacity AC-3 accd. EN 60947-3 | U _e 230 V / I _e 20 A U _e 400 V / I _e 20 A U _e 500 V / I _e 16 A U _e 690 V / I _e 10 A | |
| Back-up fuse | up to 400 V AC: 35 A gG up to 500 V AC: 35 A gG up to 690 V AC: 25 A gG | |
| Connecting terminals | main contact | 2 x 4 mm ² |
| | auxiliary/signal contact | 2 x 0.5 - 2.5 mm ² |
| Protection class | I | |
| Degree of protection accd. to EN 60529 | IP66 | |
| Cable glands/enclosure drilling | M25 cable gland see ordering details M32 cable gland see ordering details Option: metal flange with thread | |
| Weight | approx. 1.40 kg | |
| Enclosure material | glass-fibre reinforced polyester | |
| Enclosure colour | black | |
| Padlocking facility | can be locked in OFF position with 3 commercially available padlocks (Ø max. 6 mm) | |

¹⁾ Other ambient temperatures on request

GHG 262 - Ex-main current switches 20 A



3-pole, 20 A 0-I



3-pole, 20 A change-over

Ordering details

| Version | | Cable gland | | Order No. |
|--|------------|-----------------|------------------|---------------------------|
| Ex-Main current switches 20 A 3-pole | | | | |
| 3-pole | 0 - I | 2 x M32 | ON-OFF switch | GHG 262 1301 R0001 |
| | 0 - Y - D | 3 x M32 | Star-delta | GHG 262 0016 R0004 |
| | 0 - I - II | 3 x M32 | Dahlander | GHG 262 0016 R0005 |
| Ex-Main current switches 20 A 3-pole Version with 2 auxiliary contacts (1 NO; 1 x NC) | | | | |
| 3-pole | I - II | 3 x M32/1 x M25 | Change-over | GHG 262 0016 R0001 |
| | I - 0 - II | 3 x M32/1 x M25 | Change-over | GHG 262 0016 R0002 |
| | I - 0 - II | 3 x M32/1 x M25 | Reversing switch | GHG 262 0016 R0003 |

Customized version on request, auxiliary contacts in Ex ia available

Accessories

| Type | Application | Fixing method | Order No. |
|--|--|---------------|---------------------------|
| Mounting plate for Ex-Main current switches 20 A 3-pole | | | |
| Size 2 | Wall mounting | snap on | GHG 610 1953 R0104 |
| Size 2 | Pipe clamp | snap on | GHG 610 1953 R0105 |
| Size 2 | Trellis-work mounting | snap on | GHG 610 1953 R0106 |
| Type | | OU | Order No. |
| Accessories for mounting plates | | | |
| | Label holder with type label (blank) for mounting plate size 1, 2, 2A and 3 | 10 | GHG 610 1953 R0057 |
| | Plug-in fastener for CEAG modules with 5.5 mm and 11 mm mounting feet 1 set = 4 pcs. | 10 | GHG 610 1953 R0041 |
| | Mounting set for pipes 1" (of 27 - 30 mm) for mounting plates with pipe fixing | 10 | GHG 610 1953 R0020 |
| Type | Application | OU | Order No. |
| Protective canopy for mounting plate | | | |
| Size 2 | for mounting plate size 2 | 1 | GHG 610 1955 R0102 |
| Size 2A | for mounting plate size 2A | 1 | GHG 610 1955 R0103 |

Please pay attention that only order units (OU) according to the ordering details can be delivered.

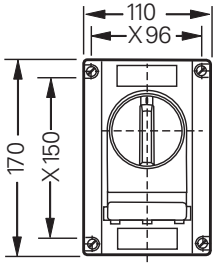


3-pole, 20 A change-over

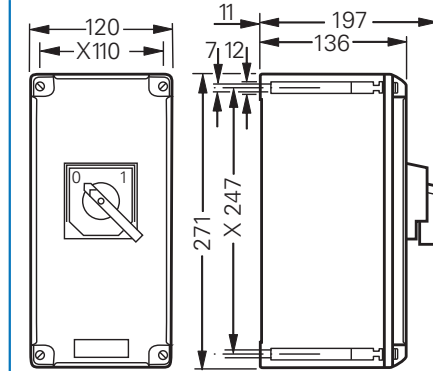
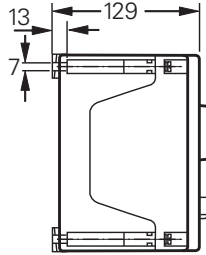


3-pole, 20 A 0-1

Dimension drawing



GHG 262 1301 R0001



GHG 262 0016 R...

X = fixing dimensions

GHG 263 - Ex-main current switches 40 A



GHG 263 1301 R0001



GHG 263 0048 R....

Technical data

Ex-Main current switches 40 A

| | |
|--|--|
| Marking accd. to 2014/34/EU | ⊕ II 2 G Ex de IIC T6 / ⊕ II 2 D Ex tD A21 IP66 T80 °C |
| EC-Type Examination Certificate | PTB 99 ATEX 1161 |
| IECEX Certificate of Conformity | BKI 07.0012 |
| Marking accd. to IECEx | Ex ed ia II T6 Ex tD A21 IP66 T55 °C |
| Permissible ambient temperature | -20 °C up to +40 °C ¹⁾ |
| Rated voltage | up to max. 690 V |
| Rated current | max. 40 A |
| Frequency | 50/60 Hz |
| Rated making/breaking capacity AC-3 accd. EN 60947-3 | U _b 230 V / I _b 40 A U _b 400 V / I _b 40 A U _b 500 V / I _b 40 A U _b 690 V / I _b 32 A |
| Back-up fuse | up to 400 V AC: 80 A gG up to 500 V AC: 80 A gG up to 690 V AC: 63 A gG |
| Connecting terminals | main contact 2 x 16 mm ² |
| Protection class | I |
| Degree of protection accd. to EN 60529 | IP66 |
| Cable glands/enclosure drilling | M25 cable gland see ordering details M40 cable gland see ordering details Option: metal flange with thread |
| Weight | 3-pole approx. 2.30 kg 6-pole approx. 6.50 kg |
| Enclosure material | glass-fibre reinforced polyester |
| Enclosure colour | black |
| Padlocking facility | can be locked in OFF position with 3 commercially available padlocks (Ø max. 6 mm) |

¹⁾ Other ambient temperatures on request



GHG 263 0048 R....



GHG 263 1301 R0001

Ordering details

| Content | Cable gland | Order No. |
|---|---------------|-----------------------------|
| Ex-Main current switches 40 A 3-pole | | |
| 3-pole | 0 - I | 2 x M40, 1 x M25 |
| | ON-OFF switch | GHG 263 1301 R0001 |
| | 0 - Y - D | 3 x M40, 2 x M25 screw plug |
| | Star-delta | GHG 263 0048 R0005 |
| | 0 - I - II | 3 x M40, 2 x M25 screw plug |
| | Dahlander | GHG 263 0048 R0006 |

| Ex-Main current switches 40 A 3-pole | | | |
|--|------------|-------------------------------------|--------------------|
| Version with 2 auxiliary contacts (1 NO + 1 x NC) | | | |
| 3-pole | I - II | 3 x M40/1 x M25, 1 x M25 screw plug | Change-over |
| | | | GHG 263 0048 R0002 |
| | I - 0 - II | 2 x M40/1 x M25, 1 x M25 screw plug | Reversing switch |
| | | | GHG 263 0048 R0004 |

| Version with 2 auxiliary contacts (1 NO + 1 x NO) | | | |
|--|------------|-------------------------------------|--------------------|
| 3-pole | I - 0 - II | 3 x M40/1 x M25, 1 x M25 screw plug | Change-over |
| | | | GHG 263 0048 R0003 |

Customized version on request, auxiliary contacts in Ex ia available

Accessories

| Type | Application | Fixing method | Order No. |
|--|-----------------------|---------------|--------------------|
| Mounting plate for Ex-Main current switches 40 A 3-pole | | | |
| Size 3 | Wall mounting | snap on | GHG 610 1953 R0118 |
| Size 3 | Pipe clamp | snap on | GHG 610 1953 R0110 |
| Size 3 | Trellis-work mounting | snap on | GHG 610 1953 R0118 |

| Type | Application | Fixing method | Order No. |
|--|----------------|------------------------|--------------------|
| Mounting plate for Ex-Main current switches 40 A 6-pole | | | |
| Size 3 | 2 x pipe clamp | screw-on ¹⁾ | GHG 610 1953 R0110 |

¹⁾ observe mounting distance

| Type | OU | Order No. |
|--|----|--------------------|
| Accessories for mounting plates | | |
| Label holder with type label (blank) for mounting plate size 1, 2, 2A and 3 | 10 | GHG 610 1953 R0057 |
| Plug-in fastener for CEAG modules with 5.5 mm and 11 mm mounting feet 1 set = 4 pcs. | 10 | GHG 610 1953 R0041 |
| Mounting set for pipes 1" (of 27 - 30 mm) for mounting plates with pipe fixing | 10 | GHG 610 1953 R0020 |

| Type | Application | OU | Order No. |
|---|---|----|--------------------|
| Protective canopy for mounting plate | | | |
| Size 3 | for pipe mounting plate size 3 vertical | 1 | GHG 610 1955 R0104 |
| Size 3A | for mounting plates wall/trellis fixing size 3 vertical | 1 | GHG 610 1955 R0105 |
| Size 3B | for mounting plates pipe fixing size 3 horizontal | 1 | GHG 610 1955 R0106 |

Please pay attention that only order units (OU) according to the ordering details can be delivered.

GHG 263 - Ex-main current switches 40 A



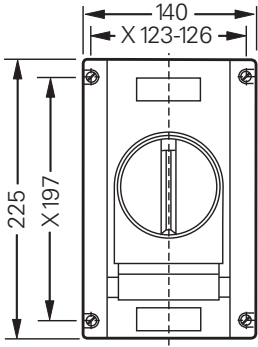
GHG 263 1301 R0001



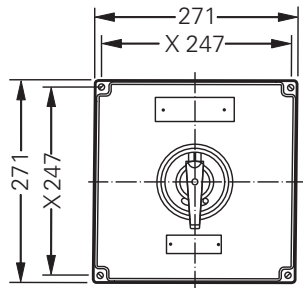
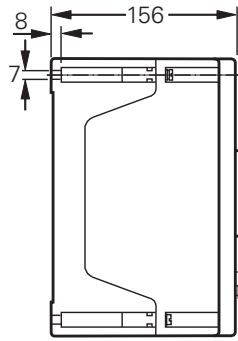
GHG 263 0048 R...

Dimension drawing

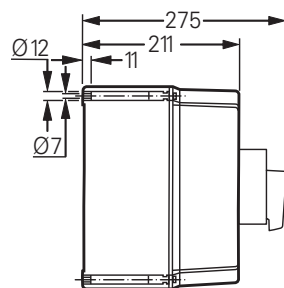
5



GHG 263 1301 R0001



GHG 263 0048 R...



X = fixing dimensions



6-pole, 80 A (change-over)

Technical data

Ex-Main current switches 80 A

| | | |
|--|--|---|
| Marking accd. to 2014/34/EU | Ⓔ II 2 G Ex de IIC T6 / Ⓔ II 2 D Ex tD A21 IP66 T80 °C | |
| EC-Type Examination Certificate | PTB 00 ATEX 1091 | |
| Permissible ambient temperature | -20 °C up to +40 °C ¹⁾ | |
| Rated voltage | up to max. 690 V | |
| Rated current | max. 80 A | |
| Frequency | 50/60 Hz | |
| Rated making/breaking capacity AC-3 accd. EN 60947-3 | U _e 230 V / I _e 80 A U _e 400 V / I _e 80 A U _e 500 V / I _e 80 A U _e 690 V / I _e 63 A | |
| Back-up fuse | up to 400 V AC: 80 A gG up to 500 V AC: 80 A gG up to 690 V AC: 63 A gG | |
| Connecting terminals | main contact auxiliary/signal contact | 2 x 16 mm ² 2 x 4 mm ² |
| Protection class | I | |
| Degree of protection accd. to EN 60529 | IP66 | |
| Cable glands/enclosure drilling | M25 cable gland see ordering details M50 cable gland see ordering details Option: metal flange with thread | |
| Weight | 3-pole 4-pole | approx. 6.50 kg approx. 9.00 kg |
| Enclosure material | glass-fibre reinforced polyester | |
| Enclosure colour | black | |
| Padlocking facility | can be locked in OFF position with 3 commercially available padlocks (Ø max. 6 mm) | |

1) Other ambient temperatures on request

GHG 264 - Ex-main current switches 80 A



6-pole, 80 A (change-over)

Ordering details

| Content | Cable gland | Order No. |
|---|------------------------------------|--|
| Ex-Main current switches 80 A | | |
| Version with 2 auxiliary contacts (1 NO; 1 x NC) | | |
| 4-pole | 0 - I without auxiliary contact | 2 x M50, 2 x M25, 1 x screw plug ON-OFF switch GHG 264 0022 R9015 |
| 3-pole | I - 0 - II | 3 x M50, 1 x M25 screw plug Change-over GHG 264 0019 R0003 |
| 3-pole | I - 0 - II | 2 x M50, 1 x M25 screw plug Reversing switch GHG 264 0019 R0004 |

Customized version on request, auxiliary contacts in Ex ia available

Accessories

| Type | Application | Fixing method | Order No. |
|---|----------------|------------------------|---------------------------|
| Mounting plate for Ex-Main current switches 80 A 3- and 4-pole | | | |
| Size 3 | 2 x pipe clamp | screw-on ¹⁾ | GHG 610 1953 R0110 |

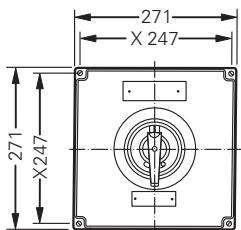
¹⁾ observe mounting distance

| Type | Application | OU | Order No. |
|--|-------------|----|---------------------------|
| Accessories for mounting plates | | | |
| Label holder with label (unlabelled) for mounting plate size 1, 2, 2A and 3 | | 10 | GHG 610 1953 R0057 |
| Mounting set for pipes 1" (of 27 - 30 mm) for mounting plates with pipe fixing | | 10 | GHG 610 1953 R0020 |

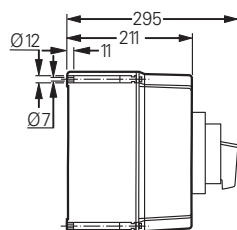
| Type | Application | OU | Order No. |
|---|---|----|---------------------------|
| Protective canopy for mounting plate | | | |
| Size 3 | for pipe clamp plate size 3 vertical | 1 | GHG 610 1955 R0104 |
| Size 3A | for mounting plates wall/trellis fixing size 3 vertical | 1 | GHG 610 1955 R0105 |
| Size 3B | for mounting plates pipe fixing size 3 horizontal | 1 | GHG 610 1955 R0106 |

Please pay attention that only order units (OU) according to the ordering details can be delivered.

Dimension drawing



GHG264 0019 R....



X = fixing dimensions

Dimensions in mm