

# 2C EMN Series Pushbutton Style Compact Manual IEC Starters

Cl. I, Div. 1 & 2, Groups C, D  
 Cl. I, Zone 1, Group IIB  
 Cl. II, Div. 1 & 2, Groups E, F, G  
 Cl. III  
 NEMA 3, 4, 7(CD), 9(EFG)

UL/cUL Listed  
 Wet Locations

## Applications:

- Explosionproof, compact, across-the-line manual IEC starters for single and polyphase VAC motors
- Used on drilling rigs for mud agitators and shakers where flammable or explosive gases are present
- Also used for fans and blowers, pumps, compressors and conveyors

## Features:

- Optional gasket protects from mud and hose-directed water
- Option for no top entries provides additional ingress protection
- Lockout/tagout option allows for starter to be locked in "OFF" position
- Redesigned buttons allow for ease of use with gloves
- Enclosure designed to protect buttons from damage
- Detachable mounting hardware
- Mounting footprint with multiple options for field flexibility

## Certifications and Compliances:

- Class I, Divisions 1 & 2, Groups C, D
- Class I, Zone 1, Group IIB
- Class II, Divisions 1 & 2, Groups E, F, G
- Class III
- UL1203
- cUL C22.2 No. 30

## Environmental Ratings:

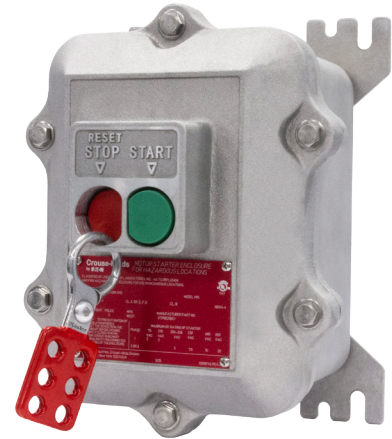
- NEMA 3, 4, 7(CD), 9(EFG)
- Protected from hose-directed water
- NEMA 4X rated when ordered with epoxy powder coat and gasket options

## Standard Materials:

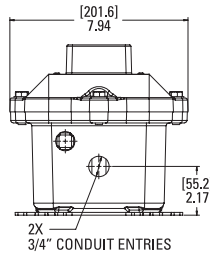
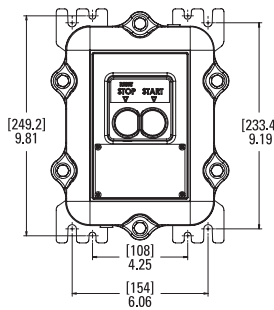
- Enclosure – copper-free aluminum
- Shaft, bearing and bolts – stainless steel
- O-ring gasket – Buna-N (optional)

## Electrical Ratings:

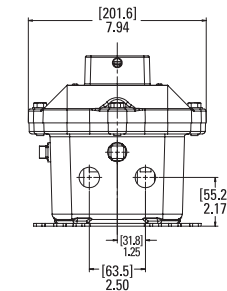
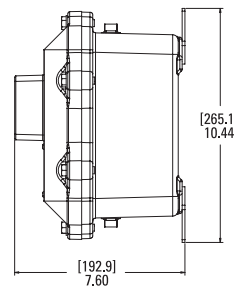
- IEC Cutler-Hammer Type XTPB manual starter
- 1 to 20 HP
- 2-pole, single phase AC up to 230 VAC
- 3-pole, three phase AC up to 600 VAC
- #18 - #10 wire size range



## Dimensions:



Top/Bottom View



Bottom View  
 (No Top Entry Option)

# EMN Series Pushbutton Style Compact Manual IEC Starters

Cl. I, Div. 1 & 2, Groups C, D  
Cl. I, Zone 1, Group IIB  
Cl. II, Div. 1 & 2, Groups E, F, G  
Cl. III  
NEMA 3, 4, 7(CD), 9(EFG)

UL/cUL Listed  
Wet Locations

2C

## Ordering Information:

# EMN26 WP16 S198V M15

### Enclosure Type

<b>26</b>	Pre-drilled for Cutler-Hammer Starter
-----------	---------------------------------------

### Starter Type

<b>W</b>	Cutler-Hammer Starter
----------	-----------------------

### Options

<b>S752</b>	Gray Epoxy Powder Coat, Outside Only
<b>S753</b>	Gray Epoxy Powder Coat, Inside & Outside
<b>S198V</b>	Breather and Drain
<b>NTE</b>	No Top Entry
<b>GSK</b>	Gasket (for NEMA 4 Rating)

### Maximum Horsepower

Suffix	Single Phase		Three Phase				Adjustment Range FLA	Rated Uninterrupted Current
	115V	230V	200-208V	230V	480V	600V		
<b>P16</b>	–	–	*	*	*	*	0.1-0.16	0.16
<b>P25</b>	–	–	*	*	*	*	0.16-0.25	0.25
<b>P40</b>	–	–	*	*	*	*	0.25-0.4	0.4
<b>P63</b>	–	–	*	*	*	*	0.4-0.63	0.63
<b>001</b>	–	–	*	*	0.5	0.5	0.63-1	1
<b>1P6</b>	–	0.1	*	*	0.75	0.75	1-1.6	1.6
<b>2P5</b>	–	0.16	0.5	0.5	1	1.5	1.6-2.5	2.5
<b>004</b>	0.12	0.33	0.75	0.75	2	3	2.5-4	4
<b>6P3</b>	0.25	0.5	1	1	3	5	4-6.3	6.3
<b>010</b>	0.5	1.5	2	3	5	7.5	6.3-10	10
<b>012</b>	0.5	2	3	3	7.5	10	8-12	12
<b>016</b>	1	2	3	5	10	10	10-16	16
<b>020</b>	1.5	3	5	5	10	15	16-20	20
<b>025</b>	2	3	5	7.5	15	20	20-25	25

\*In this range, calculate motor rating according to rated current. Specified values to NEC Table 430.250.