

600 VAC

Applications:

AFU mine signal switches are used:

- For signalling circuits or remote control of magnetic motor starters
- In non-hazardous areas of mines or process industry facilities where a rugged enclosure is needed for protection from falling ore and other material or dripping water
- Mounted on walls or in shaft ways and actuated by pulling line or cable attached to the loop at the bottom

Features:

- Sturdy raintight enclosure with heavy mounting lugs
- Wires enter enclosure through clearance holes in the underside
- Switches are actuated by a spring-loaded plunger which returns to the normal position when the operating force is removed
- Units are furnished with heavy duty motor control push buttons. Several of these may be interconnected electrically for remote control of a magnetic motor starter from more than one location

Certifications and Complies:

- NEMA: 3

Standard Materials:

- Enclosure – *Feraloy*[®] iron alloy
- Plunger – steel
- Loop – bronze

Standard Finishes:

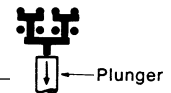
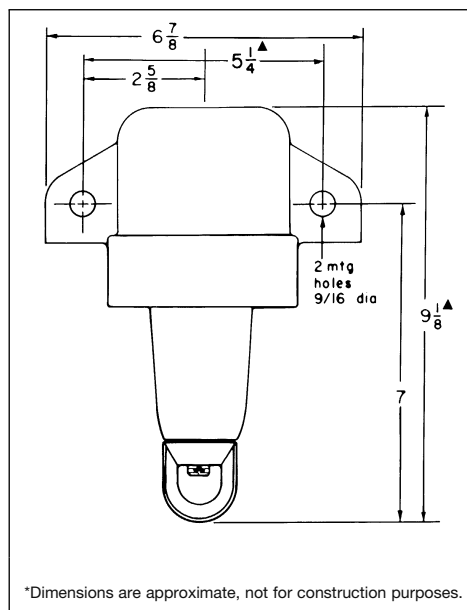
- *Feraloy* – electrogalvanized and aluminum acrylic paint
- Steel – electrogalvanized
- Bronze – natural



AFU mine signal switch with pushbutton switch (cover removed)

Ordering Information

Maximum Wt. of Line or Cable Without Actuating Switch (lbs.)	Total Operating Force Required (lbs.)	With Pushbutton Heavy Duty 600 VAC Max. Cat. #
25	50	AFU254
15	25	AFU154

**Dimensions In Inches*:**

*Dimensions are approximate, not for construction purposes.