

DESCRIPTION

The Halo Wall Pack Series incorporates advanced LED technology and optical design to bring you a slim-profile luminaire with uncompromising performance. Multiple control options are available, including integral photo control for dusk-to-dawn operation and flood for switch control. This fixture provides area coverage equivalence up to 100W Metal Halide while achieving substantial energy and maintenance savings. Perfect for illuminating residential, light commercial, apartments and hotel buildings.

Catalog #		Type
Project		
Comments		Date
Prepared by		

SPECIFICATION FEATURES

Construction

- Durable, die-cast aluminum housing
- Back cover mounts to the following types of recessed junction boxes: 4 in. square, 4 in. octagonal, 3-1/2 in. square / octagonal, masonry, 2-3/4 in. hole pattern boxes, and single gang outlet
- Cover plate included
- Versatile mounting options includes wall or ground mount
- Available in bronze finish

Electrical

- Electrical operating voltage 120V AC, external supply wiring rated for 75°C minimum
- Maintenance-free LEDs with 50,000 hours of life
- Fixture operating temperature range from -20°C to 40°C
- cULus listed for wet locations
- Meets ENERGY STAR® requirements

Optical

- The 12.5W configuration produces up to 1000 lumens
- 19W configuration produces up to 1600 lumens.
- 5000K CCT

Warranty

5 year limited warranty



LED WALL PACK SERIES

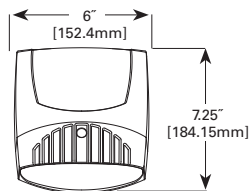
Dusk to Dawn



Security Floodlight

DIMENSIONS

Floodlight

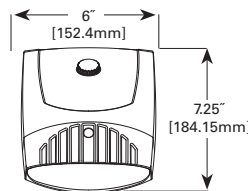


Front View



Side View

Dusk to Dawn



ORDERING INFORMATION

Product Sample Number: WP1050LPC

Series WP	Wattage 10 = 12.3W 18 = 18W	CCT 50 = 5000K CCT	Lamp Type L = LED	Controls Blank = Flood PC = Photo Control

ACCESSORIES

WPFLD-TRN



CERTIFICATION DATA

uCLus Wet Location Listed
ENERGY STAR® models

TECHNICAL DATA

120V only
-20°C to 40°C Temperature Rating
External Supply Wiring 75° Minimum
Wall and Ground Mount

TECHNICAL INFORMATION

Model	Voltage	Power	Delivered Lumens	Efficacy Lumen/ Watt	LED Color Temperature (K)	CRI
WP1050	120V	12.3	1000	81.3	5000K	73
WP1850	120V	18.7	1600	85.6	5000K	73

OPTICAL PERFORMANCE

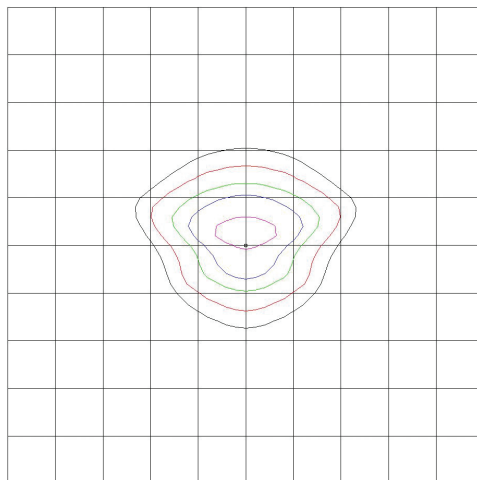
Optics provide highly directional and controlled area coverage.

Photometry assumes 10' mounting height over a level surface.

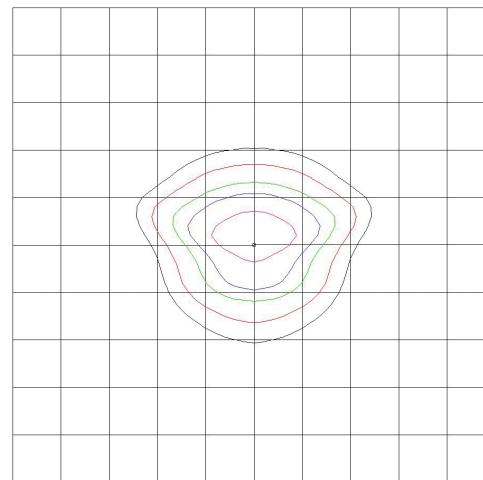
ILLUMINANCE
(Footcandles)



1000 LUMEN CONFIGURATION



1600 LUMEN CONFIGURATION



For complete product data, reference the Fluorescent Specification binder. Specifications & dimensions subject to change without notice. Consult your Eaton Representative for availability and ordering information.

