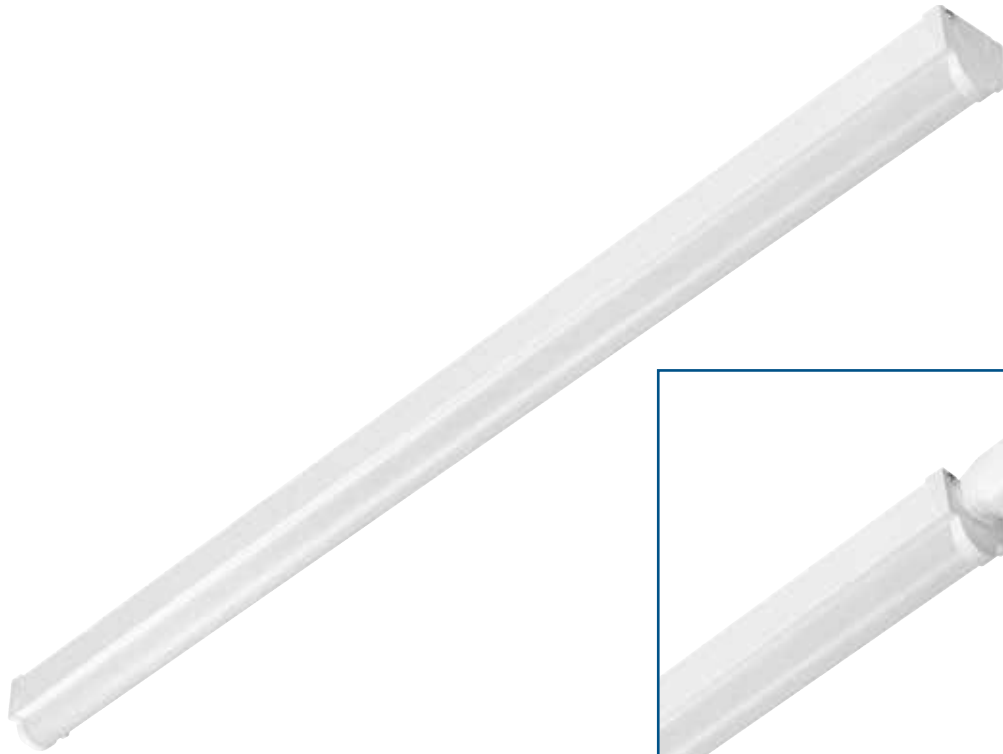


VersaPack

2



The VersaPack low cost LED batten range delivers great performance at a fantastic price point.

With a focused range of lumen outputs to aid a simple install or retrofit replacement of standard fluorescent battens, it removes the complex task of trawling through data to select the product that is right for the job.

Available with 3 hour combined non-maintained emergency functionality delivering excellent spacing and uniformity.

The simple two part housing facilitates quick and simple installation, a first fix plate with the same footprint and mounting options as a standard fluorescent batten allows easy mounting and electrical connection. The optic unit is connected via two wires in push in connectors and snap fits into the base, with two retaining screws adding additional integrity to the installation ensuring tool access only.

Optical control and performance generate high efficacies and deliver ECA compliance.

- Excellent light transmission and LED source obscurity from the reeded opal diffuser
- Nominal 4', 5' and 6' formats, ideal for both new installations and retro fit applications
- Lumen packages and length options to help retro fit against fluorescent single and twin applications
- High efficiency LED strip technology and driver combinations, with purpose designed optics and thermal management, maximise the LED and control gear life and performance
- Long LED life and no lamps to change significantly reduce maintenance costs, particularly in 24/7 operations and inaccessible areas
- Integral 3hr combined non-maintained functionality variants
- First fix base connection for rapid installation
- Retaining screws adding integrity and ensuring tool access only

Lamps and Control Gear Options

- High efficacy linear LED light engines
- >80CRI, 4000°K

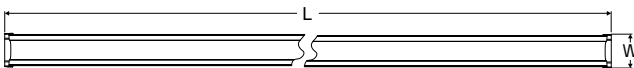
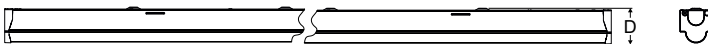
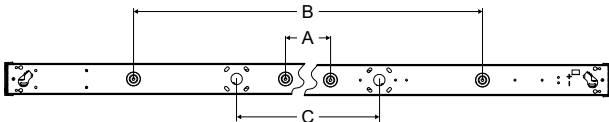
Materials

- First fix plate and heatsink – steel, powder coated in RAL9016 white finish
- End caps – injection moulded ABS, UV stabilised and fire retardant, colour matched white finish
- Emergency pod - injection moulded ABS, UV stabilised and fire retardant, colour matched white finish
- Diffuser – UV stabilised opal polycarbonate

Installation Notes

- Suitable for direct fix, trunking, conduit or chain/wire suspension
- BESA entry points central and at 600mm centres.
(One of the 600mm BESA cable entry holes may be covered on some versions, the 4 fixing holes around the cable entry hole remain accessible)
- Terminal block with 2 x 2.5mm² wire capacity per termination
- 20mm conduit entry feature in both ends with clearance feature that can be removed in the end cap (Note: end mounted emergency options would use the cable entry at one end)
- Integral emergency versions have a longer housing though the major mounting features remain the same in the first fix plate

Dimensions



Model	Length (L)		Width (W)	Depth (D)	A	B	C
	Standard	Emergency					
4'	1155	1272	62	67	420	980	600
5'	1455	1572	62	67	420	980	600
6'	1716	1883	62	67	420	980	600

All measurements in mm

Options

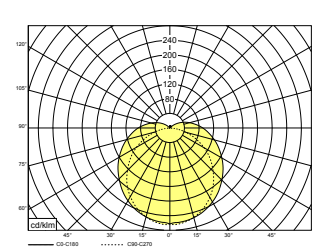
- Fully integral self-contained 3 hour duration emergency option
- Lumen packages and length options to help retro fit against fluorescent single and twin applications

Specification

To specify state: Linear LED batten with steel channel profile with durable powder coat RAL9016 white finish and reeded opal polycarbonate diffuser. Embossed snap-fit feature optical unit and screw-secured colour matched and textured ABS end caps (optional emergency functionality), as Eaton's VersaPack range.

Photometric Data

Catalogue number: VSP4314KZ



LOR 100 %
SHRnom: 1.50
SHRmax: 1.504

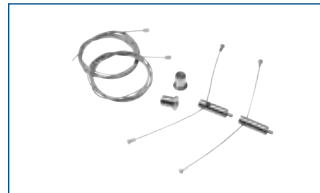
Utilisation factors / TM5		Room Index									
Reflectances			0.75	1.0	1.25	1.5	2.0	2.5	3.0	4.0	5.0
C	W	F									
0.7	0.5	0.2	52	60	67	72	79	84	88	93	96
0.7	0.3	0.2	44	52	59	65	73	78	82	88	92
0.7	0.1	0.2	39	46	53	59	67	73	77	83	88
0.5	0.5	0.2	50	57	64	68	75	79	82	87	90
0.5	0.3	0.2	43	50	57	62	69	74	78	83	86
0.5	0.1	0.2	38	45	51	56	64	69	73	79	83
0.3	0.5	0.2	47	54	60	64	70	74	77	81	84
0.3	0.3	0.2	41	48	54	59	65	70	73	78	81
0.3	0.1	0.2	37	43	50	54	61	66	70	75	79
0	0	0	34	39	46	50	56	61	64	69	72
BZ-class			5	5	5	5	6	6	6	6	6

Catalogue Numbers

Cat No	Description	Lumen output	Circuit Watts (W)	Efficacy (Llm/cW)	Weight (kg)
VPK4314KZ	VersaPack 3100lm 4000K 1.2m	3100	26	119	1.3
VPK4564KZ	VersaPack 5600lm 4000K 1.2m	5600	48	117	1.3
ELVPK4314KZ	VersaPack 3100lm 4000K 1.2m EM (includes emergency pod)	3100	26	119	1.6
ELVPK4564KZ	VersaPack 5600lm 4000K 1.2m EM (includes emergency pod)	5600	48	117	1.6
VPK5434KZ	VersaPack 4300lm 4000K 1.5m	4300	36	119	1.6
VPK5714KZ	VersaPack 7100lm 4000K 1.5m	7100	60	118	1.6
ELVPK5434KZ	VersaPack 4300lm 4000K 1.5m EM (includes emergency pod)	4300	36	119	2.0
ELVPK5714KZ	VersaPack 7100lm 4000K 1.5m EM (includes emergency pod)	7100	60	118	2.0
VPK6544KZ	VersaPack 5400lm 4000K 1.8m	5400	45	120	1.9
VPK6854KZ	VersaPack 8500lm 4000K 1.8m	8500	73	116	1.9
ELVPK6544KZ	VersaPack 5400lm 4000K 1.8m EM (includes emergency pod)	5400	45	120	2.2
ELVPK6854KZ	VersaPack 8500lm 4000K 1.8m EM (includes emergency pod)	8500	73	116	2.2

For further information contact our technical support and application department on 01302 303240 or email LightingTechnicalUK@Eaton.com

Cat No	Description	Weight (kg)
SWKITP15SY	Suspension Wire Kit, 1.5m, Short Yoke (Pair)	0.1



Suspension Kit - SWKITP15SY
(ordered separately)