



Terzetto

- Product luminaires comply with EN60598 and are suitable for use in normal interior conditions.
- This luminaire has an ambient temperature range of -25°C to 25°C for the non-emergency version
- For Emergency variants - This luminaire has an ambient temperature range of 5°C to 25°C, to ensure the batteries work correctly

1 Fitting into Ceiling Lay-in

Support luminaire sides whilst lifting and tilting. Use protective polythene glove when touching frame

Insert bearer through slot to retain luminaire. Repeat for all four bearers. Lift luminaire, clamp bearer arms down onto the ceiling in lowest position and tighten locking screws

Draw up

MSBKX bearers (order separately) are installed via adjacent ceiling tiles. It is recommended that two people perform the install. Support luminaire sides whilst lifting the luminaire into ceiling aperture

Please Note: This fitting is NOT suitable for solid ceilings

Ceiling brackets are available for use as tile replacement luminaire

2 Connecting to mains:

Connect mains supply cable to plug supplied (as shown below) Connect plug to flying lead/socket from luminaire **Ensure mains supply is turned OFF**

NOTE: For emergency fittings connect plug and socket together, remove grommet, insert plug and socket into housing and refit grommet

Mains/Emergency: (3/4-pole connector)

1 Switched Live
Earth
N Neutral
2 Unswitched Live (Only required for emergency fittings)

Mains with Dimming: (5-pole connector)

1 Switched Live
2 Dimming (+)
Earth
N Neutral
3 Dimming (-)

Emergency with Dimming: (6-pole connector)

3 Dimming (+)
2 Dimming (-)
1 Unswitched Live
N Neutral
Earth
L1 Switched Live

3 T5 Lamp Replacement

To use the access tool provided, simply slide the flanged end down the side of the frame and in a levering motion, pop it open to disengage. For easier panel removal a suction removal tool is available as an accessory

- Using the access tool provided, disengage one side of the frame.
- Repeat step 'a' on the opposite side of the fitting.
- Once fully disengaged, open front of fitting by pivoting from one end. On emergency fittings, pivot frame from the same edge as the emergency LED (as shown in the illustration)
- Change the lamps and fit the front frame back into the housing, making sure that all four corners have clicked back into place.

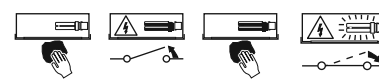
Safe Operation

1. Check the rating label for voltage and frequency before connecting this luminaire to the electrical supply.
2. Ensure that the mains supply is switched off when working on this luminaire, whether installing or carrying out any other servicing.
3. Do not mount luminaire on or close to readily flammable materials.
4. To prevent damage to driver, do not mix with conventional magnetic ballasts on the same electrical circuit.
5. Where use in more onerous situations is required, e.g. In part-completed buildings before "drying-out" is completed, or areas where ambient temperatures are outside the normal temperature range, then consult our Sales Office.
6. The light output of the product may cause injuries to human eyes in circumstances where the product is viewed directly with unshielded eyes for more than a few seconds.

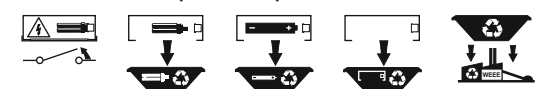
Servicing and Disposal

1. At commissioning and handing over of installation ensure that a copy of these instructions is presented to the authority responsible for the operation and maintenance of the luminaires.
2. Servicing, e.g. cleaning, must only be carried out after the electricity supply has been switched off. It must not be assumed that luminaires with lamps not lit are switched off-always check before servicing.
3. Cleaning should be carried out at regular intervals to ensure that dirt does not accumulate to an extent that will impair the thermal safety or optical performance of the luminaire. Regular cleaning will also ensure that the optical performance of the luminaires is maintained.
4. Avoid touching the LED array surface. To clean - Blow surface with either dry air or nitrogen gas.
5. At the end of life the luminaire is classed as WEEE under directive 2002/96/EC and should be disposed of in accordance with local legislation.

Luminaire Cleaning



End of Life and Components Disposal



Eaton
Wheatley Hall Road, Doncaster, South Yorkshire, DN2 4NB

Sales
T: +44 (0)1302 303303
F: +44 (0)1302 367155
E: sales@cooper-ls.com

General
+44 (0)1302 321541
+44 (0)1302 303220
technical@cooper-ls.com

International Sales
+44 (0)1302 303250
+44 (0)1302 303251
export@cooper-ls.com