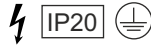


# Rengo



- Product luminaires comply with EN60598 and are suitable for use in normal interior conditions.
- This luminaire has an ambient temperature range of 5°C to 25°C

### Methods of Fixing Luminaires

To comply with lighting design ensure 600 x 600 luminaires are installed with all lamps in the same direction. Before installation ensure that the ceiling support system is adequate to carry the total luminaire weight.

## 1 Fitting into Ceiling

**Lay-in**

**Draw up**

Support luminaire using steel frame in middle of luminaire whilst lifting and tilting. Use protective polythene glove when touching frame/louvre

MSBKX bearers (order separately) are installed via adjacent ceiling tiles. It is recommended that two people perform the install. Support luminaire using steel frame in middle of luminaire whilst lifting luminaire into ceiling aperture.

Insert bearer through slot to retain luminaire. Repeat for all four bearers. Lift luminaire, clamp bearer arms down onto the ceiling in lowest position and tighten locking screws

Please Note: This fitting is not suitable for solid ceilings

## 2 Wiring Details

a. Slacken Cat Flap screw  
b. Slide Cat Flap to the left using keyhole

LUMINAIRES MUST BE EARTHED

N - Blue  
⊕ - Green/Yellow  
Switched 1 or L - Brown  
Unswitched 2 - Red

c. Lift Cat Flap, feed cable through cable grommet and wire into terminal blocks

DSI/DALI Dimming: Where needed 2 additional terminals are provided in the luminaire geartray. Please see additional leaflet for details.

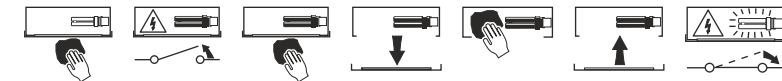
When complete, close Cat Flap, slide across using keyhole, tighten screw

### End of Life and Components Disposal



**NOTE:** For emergency fittings connect plug and socket together, remove grommet, insert plug and socket into housing and refit grommet

### Luminaire Cleaning



### Safe Operation

1. Check the rating label for voltage and frequency before connecting this luminaire to the electrical supply.
2. Ensure that the mains supply is switched off when working on this luminaire, whether installing or carrying out any other servicing.
3. To prevent damage to driver, do not mix with conventional magnetic ballasts on the same electrical circuit.
4. Where use in more onerous situations is required, e.g. In part-completed buildings before "drying-out" is completed, or areas where ambient temperatures are outside the normal temperature range, then consult our Sales Office.

### Servicing and Disposal

1. At commissioning and handing over of installation ensure that a copy of these instructions is presented to the authority responsible for the operation and maintenance of the luminaires.
2. Servicing, e.g. cleaning, must only be carried out after the electricity supply has been switched off. It must not be assumed that luminaires with lamps not lit are switched off-always check before servicing.
3. Cleaning should be carried out at regular intervals to ensure that dirt does not accumulate to an extent that will impair the thermal safety or optical performance of the luminaire. Regular cleaning will also ensure that the optical performance of the luminaires is maintained.
4. Avoid touching the LED array surface. To clean - Blow surface with either dry air or nitrogen gas.
5. At the end of life the luminaire is classed as WEEE under directive 2002/96/EC and should be disposed of in accordance with local legislation.