



Montaine - Circular

- Product luminaires comply with EN60598 and are suitable for use in normal interior conditions.
- This luminaire has an ambient temperature range of -40°C to 50°C

1 Secure
Isolate mains power supply. ensure safety chain is secured as (shown in bold) Ensure fixing method is strong enough to sustain the weight of the fitting.

Part Number	Weight (kg)	Part Number	Weight (kg)
HB100BLK5KP	4.1	HB150BLK5KMSP	6.25
HB100BLK5KMSP	4.6	HB200BLK5KP	7.9
HB150BLK5KP	5.8	HB200BLK5KMSP	8.4

2 Wire
Terminate 3-core cable using suitable method (ensure IP rating is maintained if required). Ensure Live, Earth and Neutral polarities are observed (see below) Finally restore mains supply and test fitting's functionality

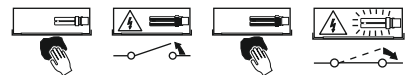
Safe Operation

1. Check the rating label for voltage and frequency before connecting this luminaire to the electrical supply.
2. Ensure that the mains supply is switched off when working on this luminaire, when installing or servicing.
3. Do not mount luminaire on or close to readily flammable materials. Minimum clearance 50mm
4. To prevent damage to driver, do not mix with conventional magnetic ballasts on the same electrical circuit.
5. Where use in more onerous situations is required, e.g. In part-completed buildings before "drying-out" is completed, or areas where ambient temperatures are outside the normal temperature range, then consult our Sales Office
6. The light source contained in this luminaire shall only be replaced but the manufacturer, his service agent or a similar qualified person.
7. Ensure product connections are suitably terminated

Servicing and Disposal

1. At commissioning and handing over of installation ensure that a copy of these instructions is presented to the authority responsible for the operation and maintenance of the luminaries.
2. Servicing, e.g. cleaning, must only be carried out after the electricity supply has been switched off. It must not be assumed that luminaries with lamps not lit are switched off-always check before servicing.
3. Cleaning should be carried out at regular intervals to ensure that dirt does not accumulate to an extent that will impair the thermal safety or optical performance of the luminaire. Regular cleaning will ensure that the optical performance of the luminaries is maintained.
4. At the end of life the luminaire is classed as WEEE under directive 2002/96/EC and should be disposed of in accordance with local legislation.
5. Ensure product is cleaned and kept free from debris at regular intervals. Build-up of debris on the back of the luminaire will degrade performance and may damage the product invalidating any warranty

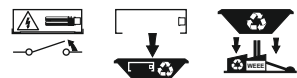
Luminaire Cleaning



Luminaire Servicing



End of Life and Components Disposal



EATON
Powering Business Worldwide

Eaton
Wheatley Hall Road, Doncaster, South Yorkshire, DN2 4NB

Sales	General	International Sales
T: +44 (0)1302 303303 F: +44 (0)1302 367155 E: sales@cooper-ls.com	+44 (0)1302 321541 +44 (0)1302 303220 technical@cooper-ls.com	+44 (0)1302 303250 +44 (0)1302 303251 export@cooper-ls.com

K1085V1



Montaine - Rack

- Product luminaires comply with EN60598 and are suitable for use in normal interior conditions.
- This luminaire has an ambient temperature range of -40°C to 50°C

1 Wall Mount
Isolate mains supply. Hold in position, mark centre holes, drill holes and secure fitting. Ensure fixings (not supplied) are strong enough support weight of fitting.

Suspended
Isolate supply, ensure surface mount brackets are removed from fitting prior to installation. Secure fitting in desired position using surface hooks(not supplied). Ensure fixing method is strong enough to hold weight of fitting

Part Number	Weight (kg)	Part Number	Weight (kg)
R60BLK5K	4	R120BLK5KMS	6.6
R60BLK5KMS	4.7	R180BLK5K	7.6
R120BLK5K	6	R180BLK5KMS	8.3

2 Wire
Terminate 3-core cable using suitable method (ensure IP rating is maintained if required). Ensure Live, Earth and Neutral polarities are observed (see below) Finally restore mains supply and test fitting's functionality

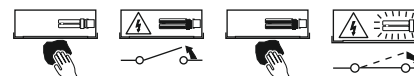
Safe Operation

1. Check the rating label for voltage and frequency before connecting this luminaire to the electrical supply.
2. Ensure that the mains supply is switched off when working on this luminaire, when installing or servicing.
3. Do not mount luminaire on or close to readily flammable materials. Minimum clearance 50mm
4. To prevent damage to driver, do not mix with conventional magnetic ballasts on the same electrical circuit.
5. Where use in more onerous situations is required, e.g. In part-completed buildings before "drying-out" is completed, or areas where ambient temperatures are outside the normal temperature range, then consult our Sales Office
6. The light source contained in this luminaire shall only be replaced but the manufacturer, his service agent or a similar qualified person.
7. Ensure product connections are suitably terminated

Servicing and Disposal

1. At commissioning and handing over of installation ensure that a copy of these instructions is presented to the authority responsible for the operation and maintenance of the luminaries.
2. Servicing, e.g. cleaning, must only be carried out after the electricity supply has been switched off. It must not be assumed that luminaries with lamps not lit are switched off-always check before servicing.
3. Cleaning should be carried out at regular intervals to ensure that dirt does not accumulate to an extent that will impair the thermal safety or optical performance of the luminaire. Regular cleaning will ensure that the optical performance of the luminaries is maintained.
4. At the end of life the luminaire is classed as WEEE under directive 2002/96/EC and should be disposed of in accordance with local legislation.
5. Ensure product is cleaned and kept free from debris at regular intervals. Build-up of debris on the back of the luminaire will degrade performance and may damage the product invalidating any warranty

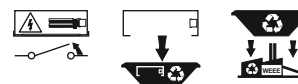
Luminaire Cleaning



Luminaire Servicing



End of Life and Components Disposal



EATON
Powering Business Worldwide

Eaton
Wheatley Hall Road, Doncaster, South Yorkshire, DN2 4NB

Sales	General	International Sales
T: +44 (0)1302 303303 F: +44 (0)1302 367155 E: sales@cooper-ls.com	+44 (0)1302 321541 +44 (0)1302 303220 technical@cooper-ls.com	+44 (0)1302 303250 +44 (0)1302 303251 export@cooper-ls.com

K1085V1