

Installation Instructions for:
Moduseal 2 - Recessed

- Product luminaires comply with EN60598 and are suitable for use in normal interior conditions.
- This luminaire has an ambient temperature range of -25°C to 25°C for the non-emergency version
- For Emergency variants - This luminaire has an ambient temperature range of 5°C to 25°C, to ensure the batteries work correctly

Important! To optimise lamp life and performance, a minimum burn-in period of 100 hours at full output is recommended before dimming the lamp

1

Lift frame from the sides to release springs and remove, please note, the frame will be attached to the housing by 2 x safety cords.
For T5 fittings - Remove lamps
For Louvred fittings - Remove centre reflectors to locate terminal block(s)

2

Feed mains cable through appropriate cable entry.
IMPORTANT: Cable must be fed through from inside the fitting

4

Ensure mains supply is switched off and wire terminal block on geartray as per below:

LUMINAIRE MUST BE EARTHED

Mains

- N - Blue (Neutral)
- ⊕ - Green/Yellow (Earth)
- L - Brown (Switched) Live

Emergency

- N - Blue (Neutral)
- ⊕ - Green/Yellow (Earth)
- L - Brown (Switched) Live
- L2- (Unswitched) Live

NOTE FOR EMERGENCY FITTINGS - Connect battery lead to PCB

DSI/DALI Dimming: Where applicable a 2 way terminal is provided in the luminaire geartray. Please see additional leaflet for details.

3

a) Raise housing into ceiling aperture and draw housing up by tightening 4 x bearer brackets in each corner

b) When fitting is secured in the ceiling, fit blanking grommets in each bearer bracket hole

Alternate Ceiling fixing

A supporting block may be required to fix the luminaire into a plasterboard ceiling as the minimum that the bearer bracket can be lowered is 24mm

24mm SUPPORT CEILING

5

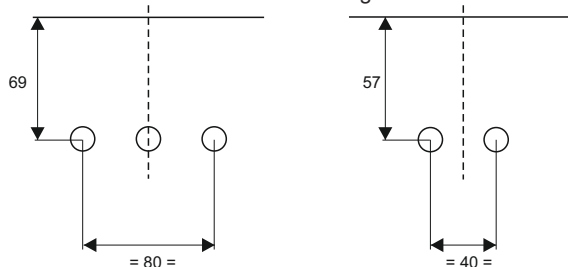
Refit frame by push fitting into position, ensure all springs are fully engaged

Cutout Dimensions - Prepared Aperture

		Cutout Dimension	
		L	W
Housing Variants	1200 X 300	1176	276
	1200 X 600	1176	576
	600 X 600	576	576

Proposed Cable Entry

Below shows the measurements for the two types of cable entry detail. The left is used on the 1200 X 600 and 600 X 600 housing and the right is used on the 1200 X 300 housing



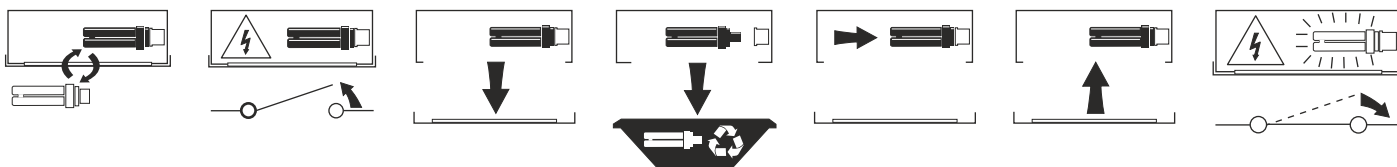
Safe Operation

1. Check the rating label for voltage and frequency before connecting this luminaire to the electrical supply.
2. Ensure that the mains supply is switched off when working on this luminaire, whether installing, re-lamping or carrying out any other servicing.
3. Use the correct lamps as initially supplied or as indicated on the ballast label.
4. This luminaire is suitable for direct mounting on all non-combustible and normally flammable materials, e.g. timber, plasterboard. Do not mount luminaire on or close to readily flammable materials.
5. To prevent damage to H.F. Ballasts do not mix H.F. and Conventional Magnetic Ballasts (Switch, Quick or S.R Start) on the same electrical circuit.

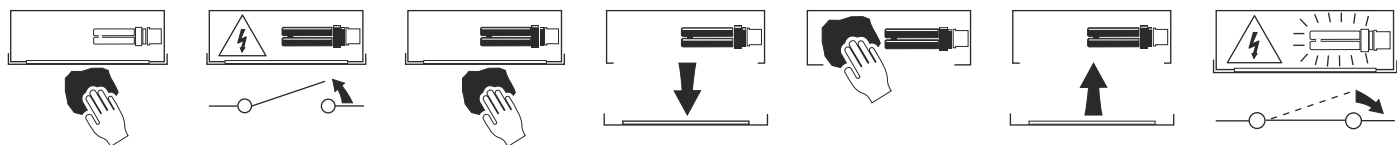
Servicing and Lamp Disposal

1. At commissioning and handing over of installation ensure that a copy of these instructions is presented to the authority responsible for the operation and maintenance of the luminaires.
2. Servicing, e.g. cleaning, lamp replacement, must only be carried out after the electricity supply has been switched off. It must not be assumed that luminaires with lamps not lit are switched off- always check before servicing.
3. Cleaning should be carried out at regular intervals to ensure that dirt does not accumulate to an extent that will impair the thermal safety of the luminaire. Regular cleaning will also ensure that the optical performance of the luminaires is maintained.
4. Failed lamps and starter switches must be replaced as soon as practicable by lamps and starters of the same type. For electronic start circuits allow **one minute** for the thermal cut-out to re-set before switching on the mains supply.
5. At the end of life the lamp and luminaire are classed as WEEE under directive 2002/96/EC and should be disposed of in accordance with local legislation.
6. All other parts of these luminaires, in small quantities, may be disposed of in the normal way. However, if large quantities of plastic are to be incinerated special precautions should be taken against the fumes which may be given off.

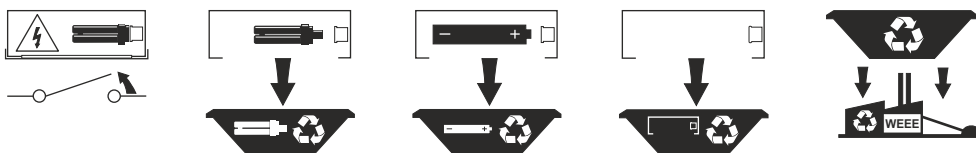
Luminaire Service



Luminaire Cleaning



End of Life and Components Disposal



Eaton

Wheatley Hall Road, Doncaster, South Yorkshire, DN2 4NB

Sales

T: +44 (0)1302 303303
F: +44 (0)1302 367155

General

+44 (0)1302 321541
+44 (0)1302 303220

International Sales

+44 (0)1302 303250
+44 (0)1302 303251

EAT•N

Powering Business Worldwide