

Gladiator LED II



The Gladiator LED II luminaire offers an energy saving alternative to traditional light sources for amenity area and perimeter lighting applications. Its LED array delivers a 50,000 hour life and eliminates the need for lamp changes, minimising full life maintenance and operating costs, compared to conventional 70w SON/HQI variants.

The provision for automatic dusk to dawn operation via an optional photocell allows automatic security lighting whilst avoiding wasted energy during daylight hours.

The cast aluminium base and polycarbonate lens combine to form a robust impact resistant body ideally suited to commercial applications. Installation is made easy with integrated features such as the side mount cable entry points, that allow through wiring and the BESA cable entry option on the back.

- Attractive, curved profile, robust polycarbonate diffuser ideal for public spaces and commercial applications
- IP65 rated, ideal for external use and easy cleaning
- 50,000 hour life to L70, which equates to 10+ years of operation, with zero lamp changes and reduced maintenance costs
- Photocell option allows automatic security and safety illumination whilst preventing wasted energy during daylight hours
- LED offers instant white light, no run up delay, reduced running and maintenance costs, compared to traditional HID options

LED Options

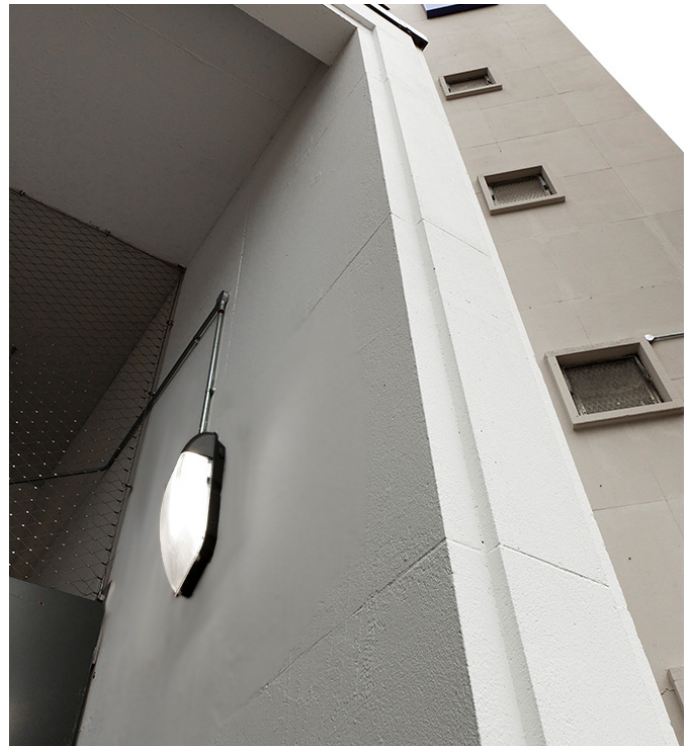
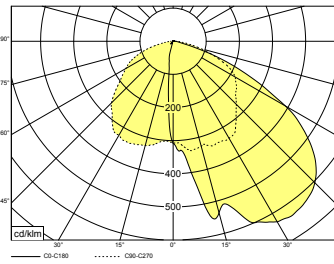
- 2820 lumen, multi single die LED array
- 39 watts, 72.3 Llm/cW
- 4000K cool white

Materials

- Base - pressure die cast aluminium black finish
- Lens / cover - polycarbonate, self coloured black cover and clear prismatic optic section

Photometric Data

Cat. No. Gladiator LED II



Installation Notes

- Suitable for wall mounting
- 20mm conduit entry on both sides for through wiring
- Fused terminal block with 2 x 1.5mm² cable capacity per termination
- Hinged diffuser secured by captive screws

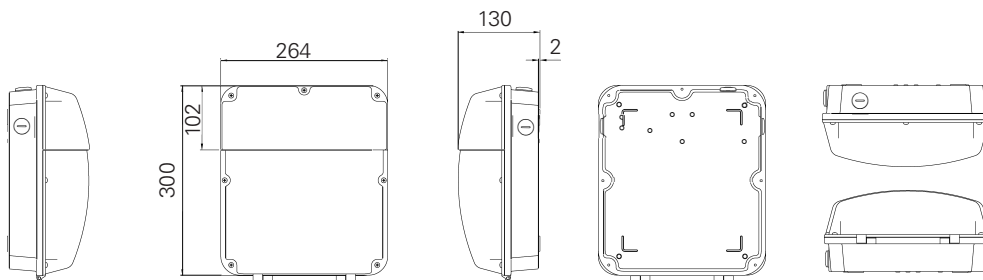
Options

- Integral photocell option provides further energy saving through automatic dusk to dawn operation
- Add 'PC' prefix to the catalogue number for the photocell option
- Integral emergency conversion, 3 hour duration

Specification

To specify state: Robust wall mounted LED area lighting luminaire, dust tight and waterproof to IP65, with die cast aluminium base and polycarbonate lens / cover assembly including clear prismatic refractor and optional photocell as Eaton's Gladiator II LED range, part no. _____

Dimensions



Catalogue Numbers

Catalogue Number	Description	Nominal Lumen (lm)	Wattage (W)	Efficacy (Llm/cW)	Weight (kg)
GL2P26004KZ	Gladiator LED II Prismatic 2600 lumen, Fixed Output	2600	39	72.3	1.40
PCGL2P26004KZ	Gladiator LED II Prismatic 2600 lumen, Fixed Output, Photocell				1.44
EBGL2P26004KZ	Gladiator LED II Prismatic 2600 lumen, Emergency				1.70
EBPCGL2P26004KZ	Gladiator LED II Prismatic 2600 lumen, Emergency, Photocell				1.74

For more information on the installation requirements and product specifications, please visit our website