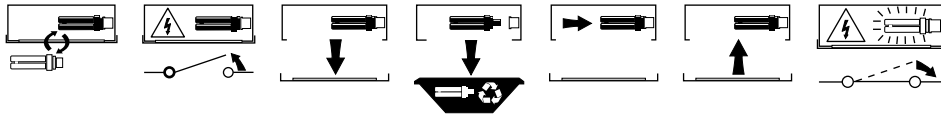
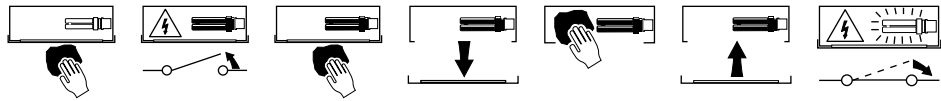


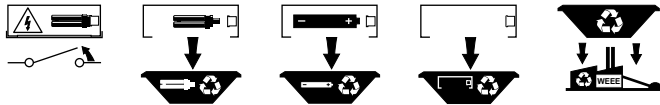
Luminaire Service



Luminaire Cleaning



End of Life and Components Disposal



Safe Operation

1. Check the rating label for voltage and frequency before connecting this luminaire to the electrical supply.
2. Ensure that the mains supply is switched off when working on this luminaire, whether installing, re-lamping or carrying out any other servicing.
3. Use the correct lamps as initially supplied or as indicated on the ballast label.
4. Do not mount luminaire on or close to readily flammable materials.
5. To prevent damage to H.F. ballasts do not mix H.F. and conventional magnetic ballasts on the same electrical circuit.
6. Where use in more onerous situations is required, e.g. In part-completed buildings before "drying-out" is completed, or areas where ambient temperatures are outside the normal temperature range, then consult our Sales Office.

Servicing and Disposal

1. At commissioning and handing over of installation ensure that a copy of these instructions is presented to the authority responsible for the operation and maintenance of the luminaires.
2. Servicing, e.g. cleaning, lamp replacement, must only be carried out after the electricity supply has been switched off. It must not be assumed that luminaires with lamps not lit are switched off-always check before servicing.
3. Cleaning should be carried out at regular intervals to ensure that dirt does not accumulate to an extent that will impair the thermal safety of the luminaire. Regular cleaning will also ensure that the optical performance of the luminaires is maintained.
4. Failed lamps and starter switches must be replaced as soon as practicable by lamps and starters of the same type. For electronic start circuits allow **one minute** for the thermal cut-out to re-set before switching on the mains supply.
5. At the end of life the lamp and luminaire are classed as WEEE under directive 2002/96/EC and should be disposed of in accordance with local legislation.

Cooper Lighting and Safety Ltd

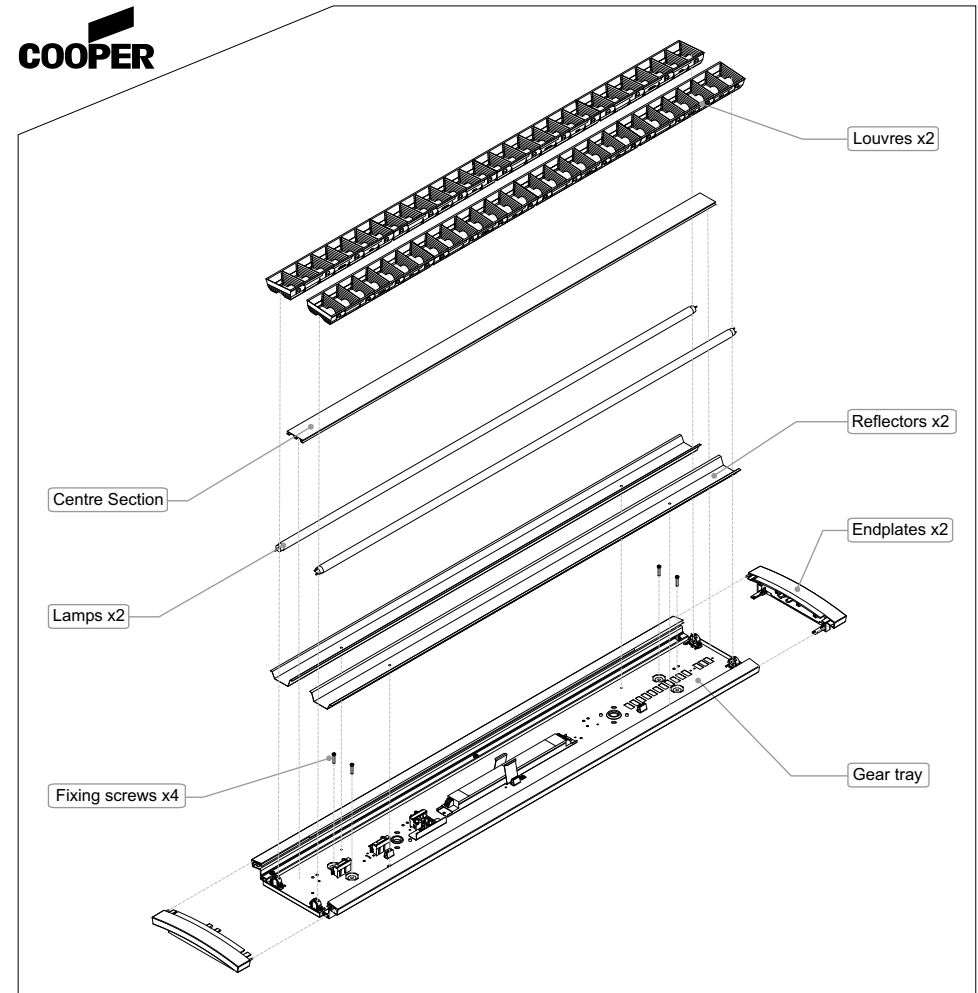
Wheatley Hall Road, Doncaster, South Yorkshire, DN2 4NB

Sales	General	Major Projects London	International Sales
T: +44 (0)1302 303303	+44 (0)1302 321541	+44 (0)1992 787999	+44 (0)1302 303250
F: +44 (0)1302 367155	+44 (0)1302 303220	+44(0)1992 787222	+44 (0)1302 303251
E: sales@cooper-ls.com	technical@cooper-ls.com	london@cooper-ls.com	export@cooper-ls.com

K815V2

COOPER Lighting and Safety

COOPER



Installation Instructions for:

Vertex

IP20



COOPER Lighting and Safety

Product luminaires comply with BSEN60598-1 and BSEN60598-2.22
This luminaire has an ambient temperature range of 5°C to 25°C, for indoor use only

Assembly

1

Remove louvres, that are placed loosely in fitting

Remove central infill, rotate one end to unclick and slide other end out.

2

Fix luminaire to desired centres using 4x fixing screws

Fixing Centres (mm)		
	Surface	Suspended
600mm	50 x 500	600
1200mm	50 x 900	1155
1500mm	50 x 900	1444

1200 & 1500 luminaires also include 600mm BESA entries

Wiring

Standard

Emergency

LUMINAIRES MUST BE EARTHED

L1 - Red (for emerg only)
L - Brown
⊕ - Green/Yellow
N - Blue

For suspended fittings

a Fix ceiling boss to mounting surface using suitable wood screw

b Feed wire into body as shown - screw body into ceiling boss

c Thread wire into clutch body higher than required to enable easy downward adjustment.

d Offer housing up to 'Y' section wire and feed ends into keyhole slots, slide across to small end to secure.

Adjust height of housing downwards by pressing top of clutch.

3

Refit central infill. Connect earth spade from central infill to the earth tag on geartray. Then slide one end of center piece into place, rotate the other end so that it clicks into position. Squeeze center bracket so that center piece locks securely in place

4

Insert louvres into correct position, louvres will click when securely in place

For micro prism panels

To insert micro prism panel, slide into groove on the outer extrusion and push against gasket, allowing the panel to click into the groove on the central infill

To remove micro prism panel, push one end of panel under endplate, slide the other end out from the centre infill, then pull diffuser away from the fitting

Please Note:
Endcaps are designed to flex to allow lamp removal. Ensure they are correctly realigned prior to installation completion