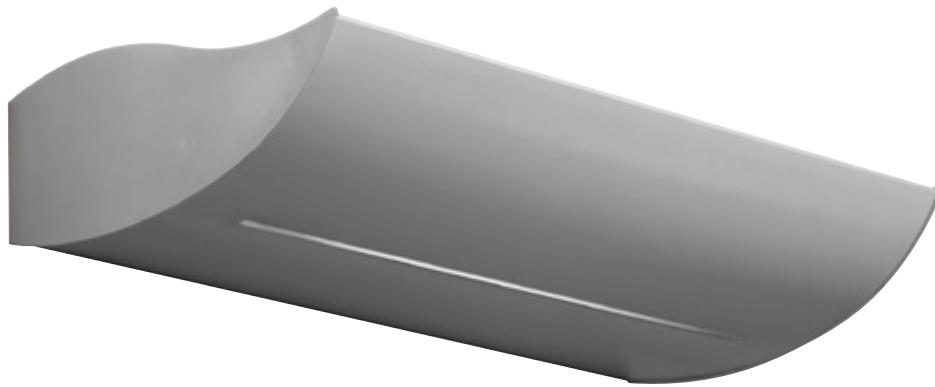



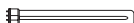

Reef



Designed to supplement VDT office installations or provide general ambient lighting, the Reef range of wall mounted uplighters offers the designer extensive choice. Available as a conventional uplighter or with a choice of slot or perforations providing feature spill light, the luminaire is available as standard in white or silver finish. A wide choice of efficient compact fluorescent and T5 lamp options permit Reef to augment many applications, in particular to provide excellent ceiling and vertical surface illumination in sympathy with the latest requirements for VDT offices. All versions share a shallow and stylish curved body design.

- Aids lighting scheme design to comply with LG7 and BS EN 12464-1
- Stylish shallow profile - only 93mm deep
- Diffusing asymmetric reflector provides soft light distribution
- Choice of white and metallic silver finish
- Feature spill downlight options for visual impact
- Compact body version for column mounting
- Simple to install

Lamp and Control Gear Options

- 18W, 26W TC-D compact fluorescent, 4000°K - G24q-2/3 cap 
- 18W, 24W, 36W, 40W, 55W TC-L compact fluorescent, 4000°K - 2G11 cap 
- 14W (HE), 24W (HO) T5 fluorescent, 4000°K - G5 cap 
- High frequency control gear as standard
- Dimming options including DSI and DALI (Dimming may not be possible with downlight feature)

Materials

- Body - steel, powder coated in RAL9016 or RAL9006 finish
- Reflector - steel, powder coated in RAL9016 finish

Installation Notes

- Suitable for wall mounting
- Direct screw fix via 2 x key hole slots
- 20mm cable entries, central and offset
- Terminal block with 2 x 2.5mm² cable capacity per termination
- Reflector removable to aid fixing and make electrical connection
- Reflector slots into position and is secured by 2 screws
- Supplied complete with lamp(s)
- Aids lighting scheme design to comply with LG7 and BS EN 12464-1 - Refer to interior lighting design guide on page 461

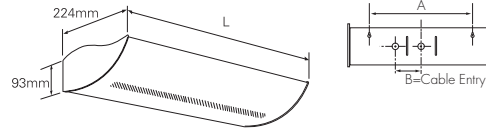
Options

- A choice of a slotted or perforated downward spill light feature for added visual impact

Specification

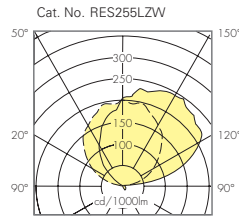
To specify state: Shallow profile wall mounted uplighter luminaire, rolled steel body with optional slot/perforated downlight feature, simple key hole slot screw fixing and finished with post coat powder coat paint in RAL9016 white/RAL9006 silver finish, as Eaton's Reef range, part no. _____

Dimensions

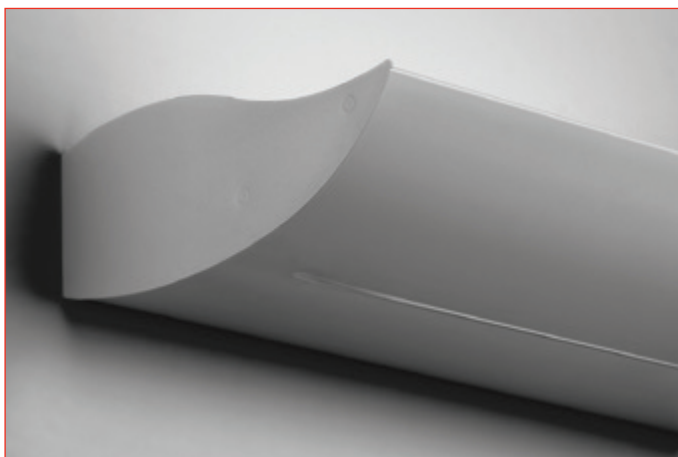


Lamp Rating	L (mm)	A	B
2 x 18/26W TC-D	260	150	50
2 x 18/24W TC-L	390	280	115
2 x 36W TC-L	490	360	155
2 x 40/55W TC-L	590	450	200
2 x 14/24W T5	590	450	200

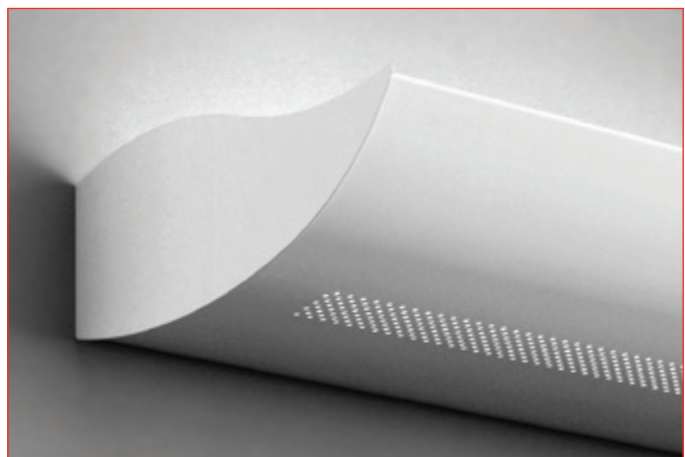
Photometric Data



LOR: 0.62
ULOR: 0.60
DLOR: 0.02



Slotted downward light feature - RAL9006 finish



Perforated downward light feature - RAL9016 finish

Catalogue Numbers

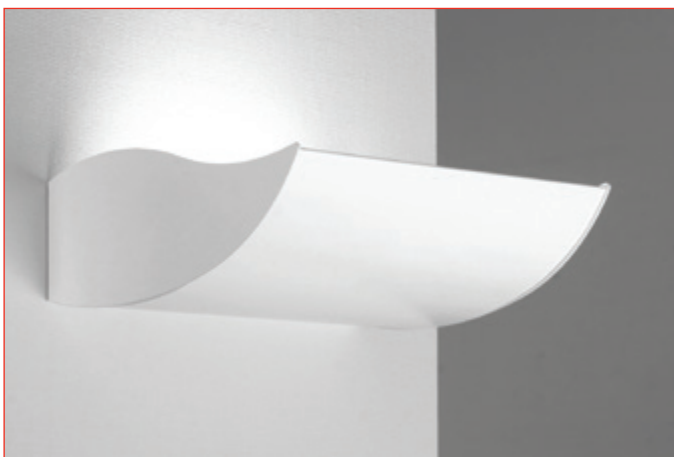
Lamp Rating	Lamp Type	Body Length	White Finish	Silver Finish	Weight (kg)
Reef - with no downward light feature					
2 x 18W	TC-D	260mm	REB218DZW	REB218DZM	1.81
2 x 26W	TC-D	260mm	REB226DZW	REB226DZM	1.81
2 x 18W	TC-L	390mm	REB218LZW	REB218LZM	2.32
2 x 24W	TC-L	390mm	REB224LZW	REB224LZM	2.32
2 x 36W	TC-L	490mm	REB236LZW	REB236LZM	2.82
2 x 40W	TC-L	590mm	REB240LZW	REB240LZM	3.03
2 x 55W	TC-L	590mm	REB255LZW	REB255LZM	3.03
2 x 14W	T5 (HE)	590mm	REB214TZW	REB214TZM	3.03
2 x 24W	T5 (HO)	590mm	REB224TZW	REB224TZM	3.03
Reef - with slotted downward light feature					
2 x 18W	TC-D	260mm	RES218DZW	RES218DZM	1.81
2 x 26W	TC-D	260mm	RES226DZW	RES226DZM	1.81
2 x 18W	TC-L	390mm	RES218LZW	RES218LZM	2.32
2 x 24W	TC-L	390mm	RES224LZW	RES224LZM	2.32
2 x 36W	TC-L	490mm	RES236LZW	RES236LZM	2.82
2 x 40W	TC-L	590mm	RES240LZW	RES240LZM	3.03
2 x 55W	TC-L	590mm	RES255LZW	RES255LZM	3.03
2 x 14W	T5 (HE)	590mm	RES214TZW	RES214TZM	3.03
2 x 24W	T5 (HO)	590mm	RES224TZW	RES224TZM	3.03
Reef - with perforated downward light feature					
2 x 18W	TC-D	260mm	REH218DZW	REH218DZM	1.81
2 x 26W	TC-D	260mm	REH226DZW	REH226DZM	1.81
2 x 18W	TC-L	390mm	REH218LZW	REH218LZM	2.32
2 x 24W	TC-L	390mm	REH224LZW	REH224LZM	2.32
2 x 36W	TC-L	490mm	REH236LZW	REH236LZM	2.82
2 x 40W	TC-L	590mm	REH240LZW	REH240LZM	3.03
2 x 55W	TC-L	590mm	REH255LZW	REH255LZM	3.03
2 x 14W	T5 (HE)	590mm	REH214TZW	REH214TZM	3.03
2 x 24W	T5 (HO)	590mm	REH224TZW	REH224TZM	3.03

For DSI dimming option, replace part number character **Z** with **RD**, eg REB255LZW becomes REB255LRDW

For DALI dimming option, replace part number character **Z** with **DD**, eg REB255LZW becomes REB255LDDW

Please check compatibility of dimming control gear with downward light feature

For further information contact our technical support and application department on 01302 303240 or email LightingTechnicalUK@Eaton.com



260mm long version for columns