

Installation Instructions for: Recessed Indirect Basket Luminaire



Recessed Direct/Indirect luminaires comply with BS EN60598 Class 1 IP20 and are suitable for use in proprietary metric suspended ceiling systems and normal indoor conditions. Where used in more onerous situations is required e.g. in part completed buildings before 'drying out' is completed, or areas where ambient temperatures are outside the normal temperature range, then consult Cooper Lighting.

Approved normal temperature range: 5°C to 25°C.

Testing of insulation resistance. In accordance with IEE Regulations, electronic ballast luminaires should be disconnected from supply before insulation resistance testing of wiring.

NOTE: LUMINAIRE IS SUITABLE FOR LAY-IN APPLICATIONS ONLY

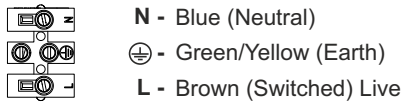
Preparation for Installation:

1. Unhook perforated basket from studs to gain access to lampholders, unhook one side first, then the other.
2. Remove the gear cover by removing screw(s), tilt cover at an angle, disengage the earth lead.

Housing Installation:

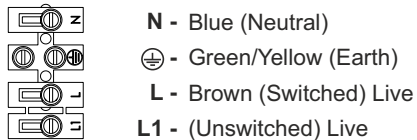
1. Before installation ensure that the ceiling support system is adequate to carry total luminaire weight.
2. Ensure prepared ceiling aperture will accommodate the luminaire dimensions for installation.
3. Offer luminaire up through the prepared aperture and then lower housing onto ceiling grid.
4. Ensure luminaire rests fully on the ceiling grid.
5. Connect mains cable to terminal blocks as shown.

Mains



LUMINAIRES MUST BE EARTHED

Emergency



EMERGENCY AND HIGH FREQUENCY LUMINAIRES MUST NOT BE MEGGER OR HIGH VOLTAGE TESTED

Refitting Gear Cover and Perforated Basket:

1. Fit earth lead, adjacent to ballast, onto bare metal tag in middle of gear cover.
2. Engage tongue on end of gear cover into slot in end of housing, swing gear cover up and secure using screw(s) previously removed.
3. Fit lamp(s), not supplied with luminaire.
4. Hook perforated basket onto the four studs, engage one side first, then the other.

Removal of PL Lamps:

1. Press red button on lampholder(s) to release.

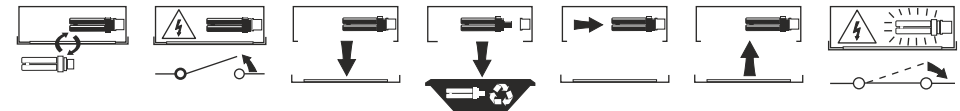
Safe Operation

1. Check the rating label for voltage and frequency before connecting this luminaire to the electrical supply.
2. Ensure that the mains supply is switched off when working on this luminaire, whether installing, re-lamping or carrying out any other servicing.
3. Use the correct lamps as initially supplied or as indicated on the ballast label.
4. This luminaire is suitable for direct mounting on all non-combustible and normally flammable materials, e.g. timber, plasterboard. Do not mount luminaire on or close to readily flammable materials.
5. To prevent damage to H.F. Ballasts do not mix H.F. and Conventional Magnetic Ballasts (Switch, Quick or S.R Start) on the same electrical circuit.

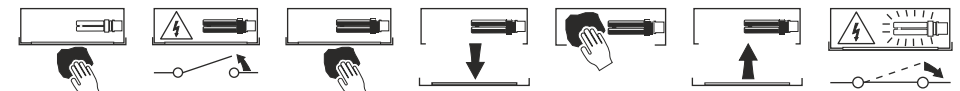
Servicing and Lamp Disposal

1. At commissioning and handing over of installation ensure that a copy of these instructions is presented to the authority responsible for the operation and maintenance of the luminaires.
2. Servicing, e.g. cleaning, lamp replacement, must only be carried out after the electricity supply has been switched off. It must not be assumed that luminaires with lamps not lit are switched off- always check before servicing.
3. Cleaning should be carried out at regular intervals to ensure that dirt does not accumulate to an extent that will impair the thermal safety of the luminaire. Regular cleaning will also ensure that the optical performance of the luminaires is maintained.
4. Failed lamps and starter switches must be replaced as soon as practicable by lamps and starters of the same type. For electronic start circuits allow **one minute** for the thermal cut-out to re-set before switching on the mains supply.
5. At the end of life the lamp and luminaire are classed as WEEE under directive 2002/96/EC and should be disposed of in accordance with local legislation.
6. All other parts of these luminaires, in small quantities, may be disposed of in the normal way. However, if large quantities of plastic are to be incinerated special precautions should be taken against the fumes which may be given off.

Luminaire Service



Luminaire Cleaning



End of Life and Components Disposal

