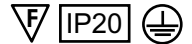


Installation Instructions for:

# LSR - Single Surface Mount Assembly

- Product luminaires comply with BSEN60598 Class 1.
- This luminaire has an ambient temperature range of 5°C to 25°C



**1 Individual Surface Mount**

**28-54W**  
Remove lamp, diffuser fixing plate and gear tray.

Gear tray  
Diffuser fixing plate  
Lamp  
Diffuser

**2**

Cable entry - 62mm

Screw fitting to surface using qty. 3 screws

Fixing Centres

Fixing Centres	
28W / 54W	1142mm + centre fixing
35W / 49W	1442mm + centre fixing

**Continuous Surface Mount**

Follow steps ① and ② as above.

Continuous Start/End

Continuous Mid-section

36mm

75mm

Insert connector plate. Lightly tighten grub screw with 2mm A/F allen key (not supplied).

Push luminaire up and engage connector plates. Screw fitting to surface, lightly tighten connector plate grub screws.

**3** Re-fit gear tray - cable entry end of gear tray to be same end as housing cable entry.  
Wire as shown in WIRING DETAILS.

**4** Re-fit diffuser fixing plate and lamp.

**5** Fit diffusers. On continuous luminaires fit start/end of run diffusers first then mid section diffusers.  
DIFFUSER NOTE: Individuals have endplates at both ends. Start/end have one endplate. Midsections have no endplates.

Engage one side of diffuser onto diffuser plate

Apply pressure

On diffusers with endplates ensure endplate sits behind lug on body endplate

**6**

Fit diffuser joining straps between end of mid section diffusers by pushing upwards

Diffuser joining strap

# LSR - Single Suspended Assembly

**1 Individual Suspended**

Cable entry - 62mm

**28-54W**  
Remove lamp, diffuser fixing plate and gear tray.

Diffuser fixing plate  
Lamp  
Diffuser

**2**

Adjacent to machine marks screw clutch down by hand until it stops then using spanner turn clutch 1/2 turn

Clutch from LS-WS

**3**

Fixing Centres	
28W / 54W	1000mm
35W / 49W	1400mm

Fixing Centres

LS-WS  
Fix ceiling boss mounting surface using suitable wood screw

Feed 1-5m long wire into body as shown - screw body into ceiling boss

**Continuous Suspended**

Follow steps ① ② ③ as above.

Continuous Start/End

Continuous Mid-section

178mm

75mm

Insert connector plate. Lightly tighten grub screw with 2mm A/F allen key (not supplied)

Push up to adjacent luminaire engage connector plate. Lightly tighten grub screw. Repeat this process for other luminaires

Feed wires into clutch. Ensure fitting is higher than required to enable easy downward adjustment, achieved by pressing top of clutch, cut off excess wire using cable cutters

**4 Wiring Details**

Individual

Continuous

(1.5m<sup>2</sup> wires supplied)

N - Blue  
⊕ - Green/Yellow  
Switched 1 or L - Brown  
Unswitched 2 - Red

LUMINAIRES MUST BE EARTHED

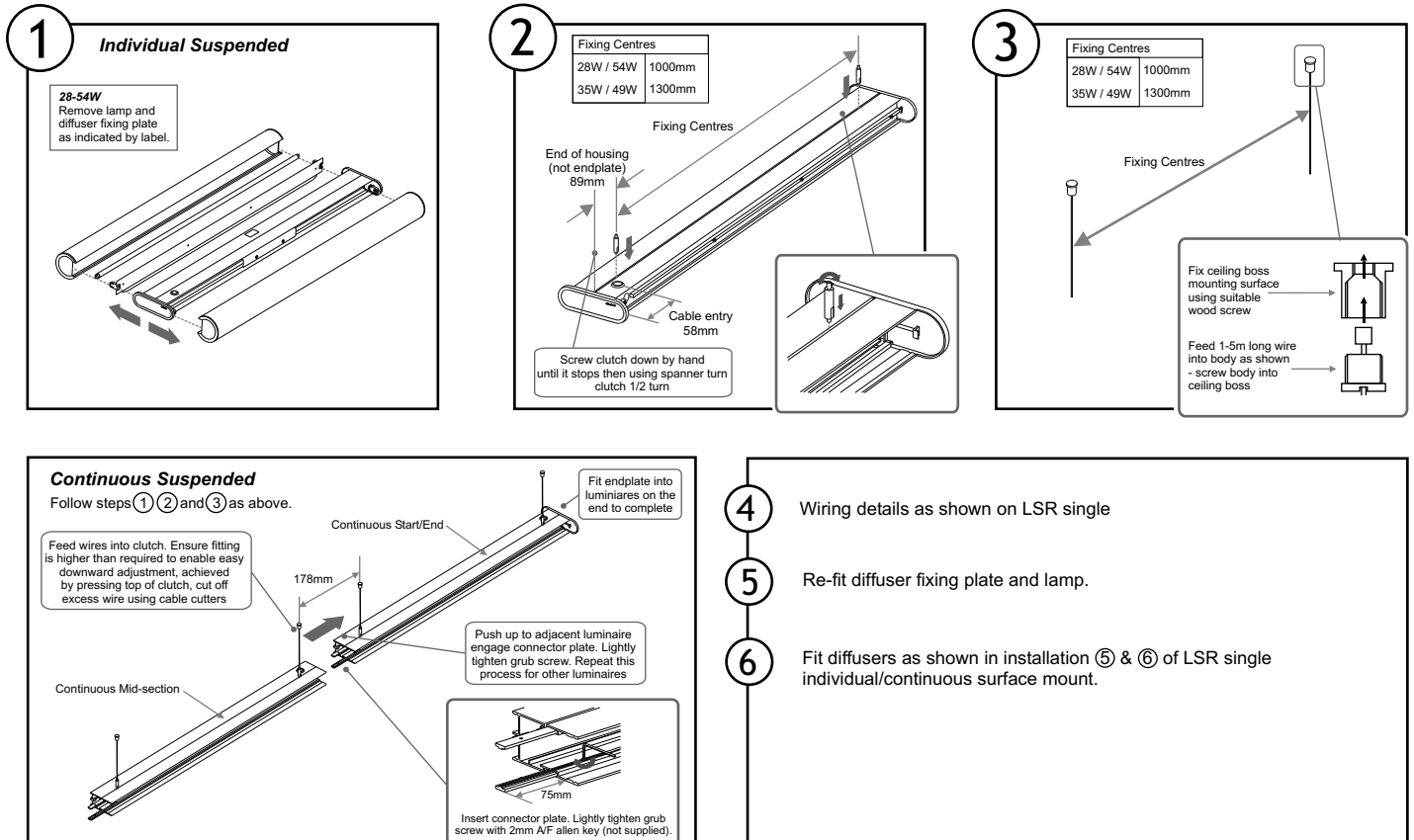
**5** Re-fit diffuser fixing plate and lamp.

**6** Fit diffusers as shown in instruction ⑤ & ⑥ of LSR single individual/continuous surface mount.

**7** Removal of diffusers for servicing.

From middle of diffuser disengage one side away from diffuser fixing plate and work towards each end, once fully disengaged from one side, unhook other side.

# LSR - Twin Suspended Assembly



## Safe Operation

1. Check the rating label for voltage and frequency before connecting this luminaire to the electrical supply.
2. Ensure that the mains supply is switched off when working on this luminaire, whether installing, re-lamping or carrying out any other servicing.
3. Use the correct lamps as initially supplied or as indicated on the ballast label.
4. This luminaire is suitable for mounting in direct contact with non-combustible materials, e.g. Metal, concrete, plaster. It is also suitable for mounting adjacent to normally flammable materials, e.g. Timber, chipboard, providing the top surface is spaced not less than 25mm from such materials. Do not mount luminaire on or close to readily flammable materials.
5. To prevent damage to H.F. Ballasts do not mix H.F. And conventional magnetic Ballasts on the same electrical circuit.
6. Where use in more onerous situations is required, e.g. In part-completed buildings before "drying-out" is completed, or areas where ambient temperatures are outside the normal temperature range, then consult our Sales Office.

## Servicing and Disposal

1. At commissioning and handing over of installation ensure that a copy of these instructions is presented to the authority responsible for the operation and maintenance of the luminaires.
2. Servicing, e.g. cleaning, lamp replacement, must only be carried out after the electricity supply has been switched off. It must not be assumed that luminaires with lamps not lit are switched off-always check before servicing.
3. Cleaning should be carried out at regular intervals to ensure that dirt does not accumulate to an extent that will impair the thermal safety of the luminaire. Regular cleaning will also ensure that the optical performance of the luminaires is maintained.
4. Failed lamps and starter switches must be replaced as soon as practicable by lamps and starters of the same type. For electronic start circuits allow **one minute** for the thermal cut-out to re-set before switching on the mains supply.
5. At the end of life the lamp and luminaire are classed as WEEE under directive 2002/96/EC and should be disposed of in accordance with local legislation.

## Cooper Lighting and Safety Ltd

Wheatley Hall Road, Doncaster, South Yorkshire, DN2 4NB

### Sales

T: +44 (0)1302 303303  
F: +44 (0)1302 367155  
E: sales@cooper-ls.com

### General

+44 (0)1302 321541  
+44 (0)1302 303220  
technical@cooper-ls.com

### Major Projects London

+44 (0)1992 787999  
+44(0)1992 787222  
london@cooper-ls.com

### International Sales

+44 (0)1302 303250  
+44 (0)1302 303251  
export@cooper-ls.com