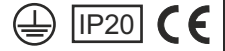


# Installation Instructions for: LSR Schools



- Product luminaires comply with EN60598 and are suitable for use in normal interior conditions.
- This luminaire has an ambient temperature range of -10°C to 25°C for the non-emergency version
- For Emergency variants - This luminaire has an ambient temperature range of 5°C to 25°C, to ensure the batteries work correctly

**1**

Remove diffuser, lamp, and gear cover

**NOTE:** When removing and fitting the diffuser, ensure it is held along the centre piece, not by the endplates

**2**

**Surface Mount**

Secure fitting to surface using suitable fixing through embossed feet or BESA feature.  
Feed mains cable into one of the cable entries.

**NOTE:** If end cable entry is used, route cable to the edge of the housing, using cable ties in the above holes

**3**

**Suspended (Suspension kit ordered as separate accessory)**

**a** Fix ceiling boss to mounting surface using suitable wood screw

**b** Feed wire into body as shown - screw body into ceiling boss

**c** Thread wire into clutch body higher than required to enable easy downward adjustment.

**d** Offer housing up to 'Y' section wire and feed ends into keyhole slots, slide across to small end to secure.

**e** Adjust height of housing downwards by pressing top of clutch.

**5**

**Wiring Details**

Wire mains cable to terminal block as per below:

**Mains**

- N - Blue (Neutral)
- ⊕ - Green/Yellow (Earth)
- L - Brown (Switched) Live

**Emergency**

- N - Blue (Neutral)
- ⊕ - Green/Yellow (Earth)
- L - Brown (Switched) Live
- L1 - (Unswitched) Live

**LUMINAIRE MUST BE EARTHED**

**DSI/DALI Dimming:** Where applicable a 2 way terminal is provided in the luminaire geartray. Please see additional leaflet for details.

**Easichck2 connection:** Where applicable, EasiCheck termination is provided in the luminaire gear tray. Please see additional leaflet for details.

**6**

**NOTE:** When removing and fitting the diffuser, ensure it is held along the centre piece, not by the endplates

- Fit and screw gear cover on
- Fit lamp
- Re-fit diffuser, ensuring 1 x screw secures each end through diffuser and housing endcap

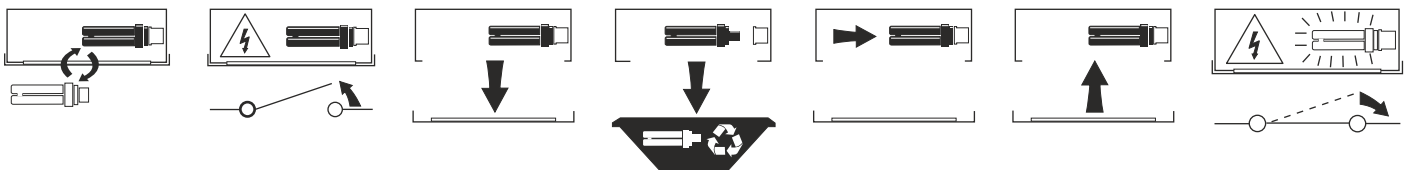
## Safe Operation

1. Check the rating label for voltage and frequency before connecting this luminaire to the electrical supply.
2. Ensure that the mains supply is switched off when working on this luminaire, whether installing, re-lamping or carrying out any other servicing.
3. Use the correct lamps as initially supplied or as indicated on the ballast label.
4. This luminaire is suitable for direct mounting on all non-combustible and normally flammable materials, e.g. timber, plasterboard. Do not mount luminaire on or close to readily flammable materials.
5. To prevent damage to H.F. Ballasts do not mix H.F. and Conventional Magnetic Ballasts (Switch, Quick or S.R Start) on the same electrical circuit.

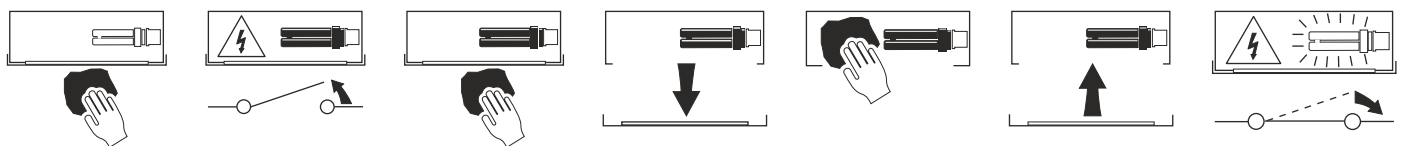
## Servicing and Lamp Disposal

1. At commissioning and handing over of installation ensure that a copy of these instructions is presented to the authority responsible for the operation and maintenance of the luminaries.
2. Servicing, e.g. cleaning, lamp replacement, must only be carried out after the electricity supply has been switched off. It must not be assumed that luminaires with lamps not lit are switched off- always check before servicing.
3. Cleaning should be carried out at regular intervals to ensure that dirt does not accumulate to an extent that will impair the thermal safety of the luminaire. Regular cleaning will also ensure that the optical performance of the luminaires is maintained.
4. Failed lamps and starter switches must be replaced as soon as practicable by lamps and starters of the same type. For electronic start circuits allow **one minute** for the thermal cut-out to re-set before switching on the mains supply.
5. At the end of life the lamp and luminaire are classed as WEEE under directive 2002/96/EC and should be disposed of in accordance with local legislation.
6. All other parts of these luminaries, in small quantities, may be disposed of in the normal way. However, if large quantities of plastic are to be incinerated special precautions should be taken against the fumes which may be given off.

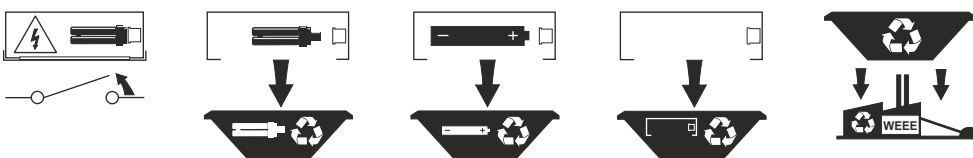
## Luminaire Service



## Luminaire Cleaning



## End of Life and Components Disposal



### Cooper Lighting and Safety Ltd

Wheatley Hall Road, Doncaster, South Yorkshire, DN2 4NB

#### Sales

T: +44 (0)1302 303303  
F: +44 (0)1302 367155  
E: sales@cooper-ls.com

#### General

+44 (0)1302 321541  
+44 (0)1302 303220  
technical@cooper-ls.com

#### International Sales

+44 (0)1302 303250  
+44 (0)1302 303251  
export@cooper-ls.com