

# Installation Instructions for: LSN Attachments

**1 LSN-WB**

Secure each LSN-WB to housing using qty. 2 screws supplied

Back of luminaire

Bracket to be flush with end of housing (not endplate)

**2**

Secure to wall using appropriate fixing screws (not supplied)

74mm Continuous Only

Fixing Centres

Fixing Centres	
14W / 24W	804mm
28W / 54W	1404mm
35W / 49W	1704mm

Refer to LSN leaflet for remaining Fixing/Wiring details

**3 LSN-RB / LSN-REK / LSN-T6 / LSN-T12 / LSN-T15**

Recommended Wooden Batten Spacing For Plasterboard Support

44x44mm Wooden Battens

240mm MAX  
160mm MIN

Plasterboard

Orientation of flat bracket from LSN-RB

Length of aperture is total length of luminaires + 4mm

Drilling pilot holes-4 per bracket

Aperture 64mm wide

17.5mm

Start of Run Fixing crs

Mid section Fixing crs

End of Run Fixing crs

a) Cut aperture to required size.

b) Using flat bracket from LSN-RB as a drilling template, drill 4 x holes 5mm dia, through pilot holes.

c) Countersink these drilled holes so c/sk screws supplied are flush with plasterboard.

Type	Start/End of Run Fxg crs	Mid section crs
14W / 24W	878mm	842mm
28W / 54W	1478mm	1442mm
35W / 49W	1778mm	1742mm

**4**

Secure each slider bracket to plasterboard using M5 c/sk screws supplied.

**5 LSN-RB**

Lazy bend lines

Semi-recessed  
Bend backwards and forwards until ends snap off.

Fully Recessed  
Bend legs of flat bracket to 90° across its lazy bend line.

Semi Recessed  
As above but 'snap off' the bottom leg sections.

**6**

Fit main bracket into slider brackets. Ensure that dimension 'a' from bottom of plasterboard to inside face of main bracket is adhered to. Tighten slider bracket screws to hold main bracket in place

Dimm 'a'

NOTE: Remove one M5 screw from main bracket at start/end of run. Ensure remaining screw is to outside when fitting main bracket.

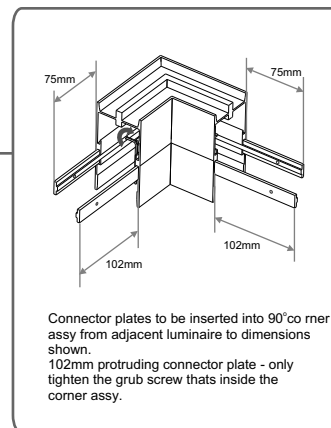
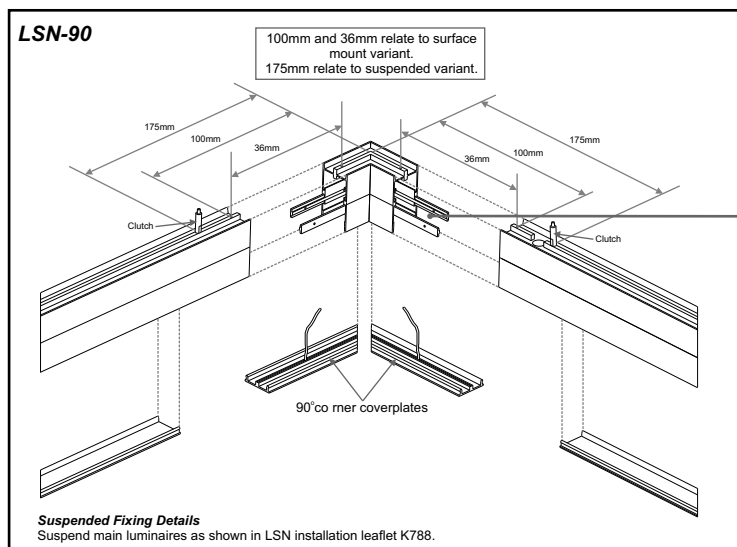
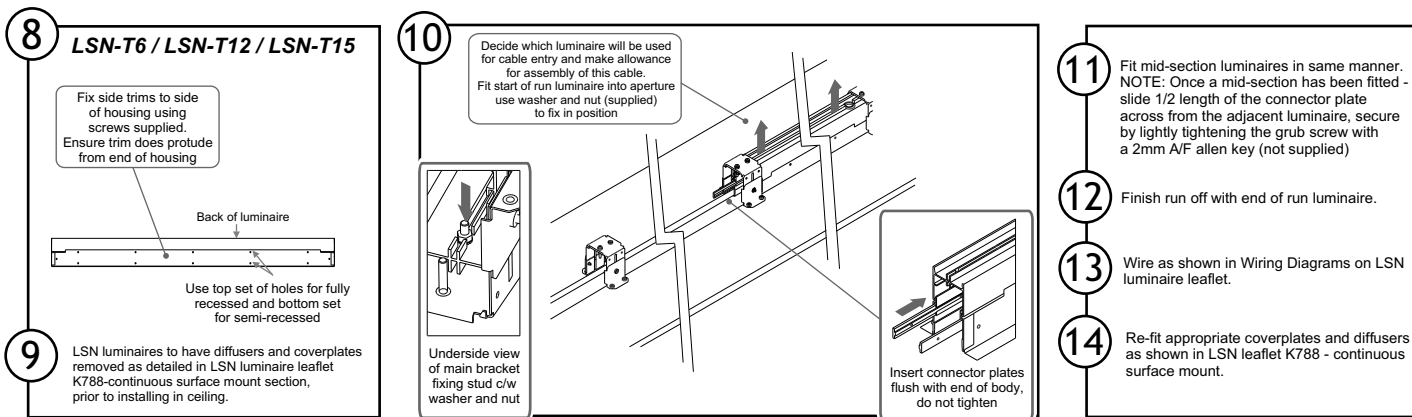
	Dimm 'a'
Fully Recessed	109mm
Semi-Recessed	65mm

**7 LSN-REK**

Fit one endplate to start of run luminaire and end of run luminaire as shown using screws supplied

End of run luminaire

Start of run luminaire



### Safe Operation

1. Check the rating label for voltage and frequency before connecting this luminaire to the electrical supply.
2. Ensure that the mains supply is switched off when working on this luminaire, whether installing, re-lamping or carrying out any other servicing.
3. Use the correct lamps as initially supplied or as indicated on the ballast label.
4. This luminaire is suitable for mounting in direct contact with non-combustible materials, e.g. Metal, concrete, plaster. It is also suitable for mounting adjacent to normally flammable materials, e.g. Timber, chipboard, providing the top surface is spaced not less than 25mm from such materials. Do not mount luminaire on or close to readily flammable materials.
5. To prevent damage to H.F. Ballasts do not mix H.F. And conventional magnetic Ballasts on the same electrical circuit.
6. Where use in more onerous situations is required, e.g. In part-completed buildings before "drying-out" is completed, or areas where ambient temperatures are outside the normal temperature range, then consult our Sales Office.

### Servicing and Disposal

1. At commissioning and handing over of installation ensure that a copy of these instructions is presented to the authority responsible for the operation and maintenance of the luminaires.
2. Servicing, e.g. cleaning, lamp replacement, must only be carried out after the electricity supply has been switched off. It must not be assumed that luminaires with lamps not lit are switched off-always check before servicing.
3. Cleaning should be carried out at regular intervals to ensure that dirt does not accumulate to an extent that will impair the thermal safety of the luminaire. Regular cleaning will also ensure that the optical performance of the luminaires is maintained.
4. Failed lamps and starter switches must be replaced as soon as practicable by lamps and starters of the same type. For electronic start circuits allow **one minute** for the thermal cut-out to re-set before switching on the mains supply.
5. At the end of life the lamp and luminaire are classed as WEEE under directive 2002/96/EC and should be disposed of in accordance with local legislation.

### Cooper Lighting and Safety Ltd

Wheatley Hall Road, Doncaster, South Yorkshire, DN2 4NB

#### Sales

T: +44 (0)1302 303303  
F: +44 (0)1302 367155  
E: sales@cooper-ls.com

#### General

+44 (0)1302 321541  
+44 (0)1302 303220  
technical@cooper-ls.com

#### Major Projects London

+44 (0)1992 787999  
+44(0)1992 787222  
london@cooper-ls.com

#### International Sales

+44 (0)1302 303250  
+44 (0)1302 303251  
export@cooper-ls.com