



The LSN lighting system capitalises on the slim dimensions of the T5 fluorescent lamp, providing an ultra narrow luminaire which can be configured in a multitude of different ways.


Its clever yet simple design enables the lighting designer to create a bespoke lighting solution without compromising on lighting performance. The clean lines of the LSN provides an effective solution when mounted direct to a ceiling or in a corner for wall highlighting and complements a contemporary building design when suspended individually or as a continuous run.

- Ultra slim 56mm wide profile
- High quality extruded aluminium body
- End to end or individually mounted
- Surface or suspended options
- Opal polycarbonate diffuser
- High efficiency or high output T5 lamps
- Integrates with the LSN recessed range

Surface and Suspended

LSN Surface

Lamp and Control Gear Options

- 14W, 28W, 35W (HE) T5 fluorescent - G5 cap 
- 24W, 54W, 49W (HO) T5 fluorescent - G5 cap
- High frequency control gear as standard
- Dimming options including DSI and DALI

Materials

- Body - extruded aluminium, RAL9006 silver grey finish
- End caps - ABS, RAL9006 silver grey finish
- Geartray - steel, white enamel finish
- Diffuser - UV stable opal polycarbonate

Options

- Fully integral emergency conversions
- 90° corner joints

Installation Notes

- Suspension wire kit boss secured by single screw to mounting surface
- Height adjustment via simple clutch mechanism, clutch screws direct into back of housing
Please order suspension kits separately
- Surface mount option screws direct to ceiling
- Wall mount option via wall mounting brackets
- Simple alignment and power connection for continuous mount versions
- Fused as standard
- Supplied complete with lamps

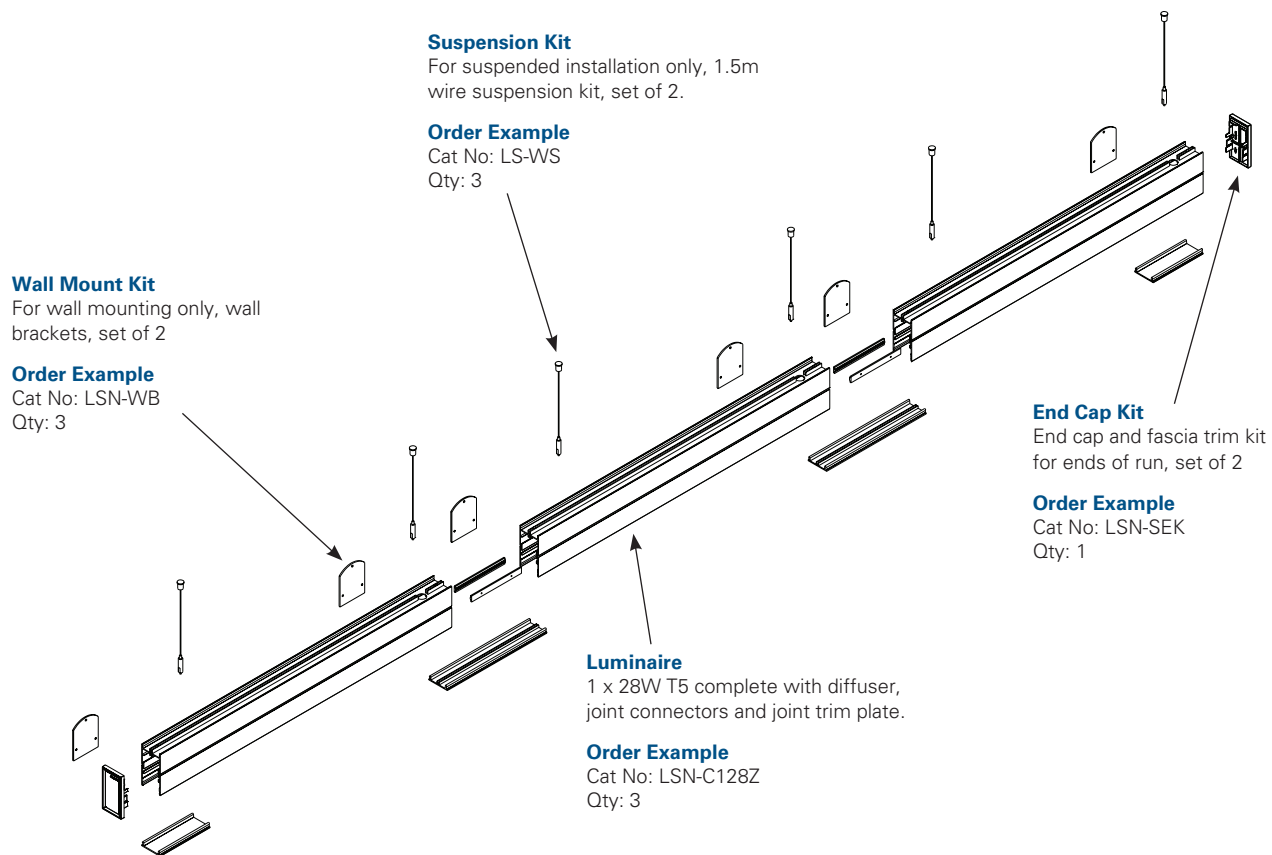
Specification

To specify state: Architectural linear surface/suspended/wall mount luminaire, 56mm wide, 110mm deep suitable for individual or end to end mounting with extruded aluminium body and UV stable polycarbonate diffuser as Eaton's LSN range, part no. _____

Continuous Mount Construction

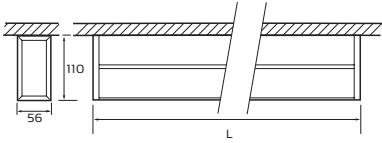
Suspended/Surface/Wall Mount

Order Example - 1 x 28W 1.2m, continuous run of 3 luminaires

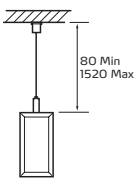


Dimensions

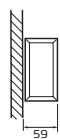
Surface mount



Suspended



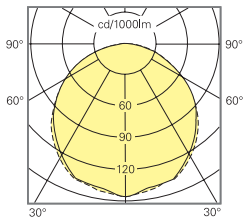
Wall mount



Lamp	L (mm)
14W/24W	896
28W/54W	1496
35W/49W	1796

Photometric Data

Cat. No. LSN-S128Z



LOR: 41.3
ULOR: 41.3
DLOR: 0.00

Catalogue Numbers

Lamp Rating	Cat No	Weight (kg)	Emergency Cat No	Weight (kg)
Individual				
1x14W	LSN-S114Z	3.42	-	-
1x24W	LSN-S124Z	3.42	-	-
1x28W	LSN-S128Z	4.82	EBLSN-S128Z	5.92
1x54W	LSN-S154Z	4.82	-	-
1x35W	LSN-S135Z	5.59	EBLSN-S135Z	6.69
1x49W	LSN-S149Z	5.59	-	-
Continuous				
1x14W	LSN-C114Z	3.42	-	-
1x24W	LSN-C124Z	3.42	-	-
1x28W	LSN-C128Z	4.82	EBLSN-C128Z	5.92
1x54W	LSN-C154Z	4.82	-	-
1x35W	LSN-C135Z	5.59	EBLSN-C135Z	6.69
1x49W	LSN-C149Z	5.59	-	-

For DSI dimming option, replace part number character Z with RD, eg LSN-S128Z becomes LSN-S128RD

For DALI dimming option, replace part number character Z with DD, eg LSN-S128Z becomes LSN-S128DD

Cat No Description

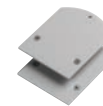
Accessories

LSN-90	90° corner joint
LSN-WB	Wall mounting brackets - set of 2
LSN-SEK	Surface/suspended/wall mount end caps - set of 2
LS-WS	1500mm wire suspension - set of 2

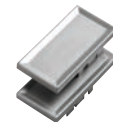
LSN-90



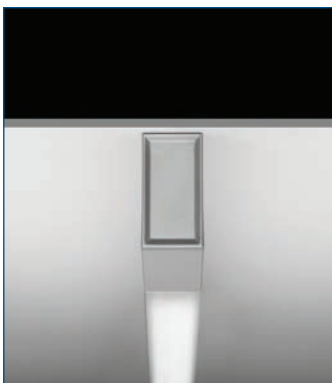
LSN-WB



LSN-SEK



LS-WS



Surface mount



Suspended



Wall mount